

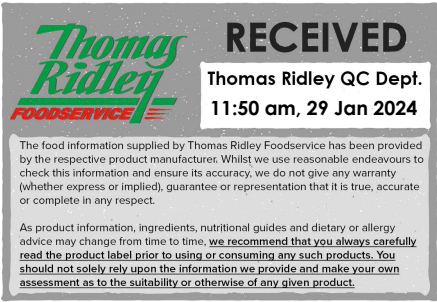
Traditional Biscuit Mini Pack Assortment 100 x 30g e

Bronte Traditional Mini Packs 100 Packs (Multipack)

PRODUCT DESCRIPTION

Fruit Shortcake - 2 biscuits
 Ginger Crunch - 2 biscuits
 Lemon Flavour Shortcake - 2 biscuits
 Chocolate Chip Cookie - 2 biscuits
 Viennese Whirl - 2 biscuits

Brand	Burton's Food Limited
Manufacturer Product Code	20261
Product Type	Food
Product Category	Biscuits, Wafers and Crackers
Storage Type	Ambient
Erudus ID	f9428faba10b4b6f9049ba2fb6c7c85c
Specification Type	Legacy



Bronte Chocolate Chip Cookie

Manufacturer Component Code	16219
Inner Component GTIN	072417834158
Outer Case GTIN	05010049202612



INGREDIENTS

Ingredient Declaration

2 cookies with dark chocolate chips

Ingredients: **WHEAT** flour (**WHEAT** flour, Calcium carbonate, Niacin, Iron, Thiamin), Dark chocolate chips (18%) (Sugar, Cocoa mass, Cocoa butter, Emulsifier (**SOYA** lecithin), Flavourings), Sugar, Rolled **OATS**, Palm oil, Rapeseed oil, Partially inverted sugar syrup, Skimmed **MILK** powder, Raising agents (Potassium carbonates, Sodium bicarbonates), Salt, Flavourings, Colours (Annatto bixin, Curcumin).

ALLERGENS

Product Contains:

Celery/Celeriac	No	Mustard	No
Cereals Containing Gluten	Yes	Nuts (Tree)	No
Barley	No	Almond nuts	No
Oats	Yes	Brazil nuts	No
Rye	No	Cashew nuts	No
Wheat (including Spelt and Khorasan)	Yes	Hazelnuts	No
Gluten content <20ppm	No	Macadamia (Queensland) nuts	No
Crustacea	No	Pecan nuts	No
Eggs	No	Pistachio nuts	No
Fish	No	Walnuts	No
Lupin	No	Peanuts	No
Milk	Yes	Sesame Seeds	No
Molluscs	No	Soybeans	Yes
		Sulphur Dioxide and Sulphites	No

Additional Allergen Information

For allergens, including cereals containing gluten, see ingredients in bold.

SUPPLEMENTARY INGREDIENT INFORMATION

Palm Oil	Yes
Hydrogenated Vegetable Oil/Fat	No
GM Protein/DNA	No

ADDITIVES

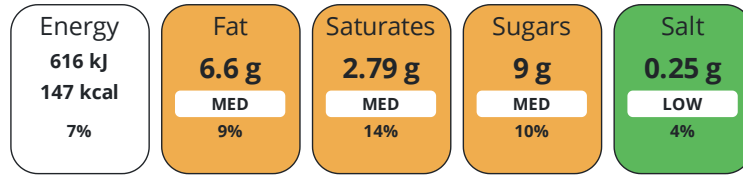
Product Contains:

Artificial Antioxidants	No	Artificial Flavourings	Yes
Artificial Colours	No	Artificial Preservatives	No
Artificial Flavour Enhancers	No	Artificial Sweeteners	No
Suitable for Coeliacs	No	Halal Diet	No
Kosher Diet	No	Vegetarian Diet	Suitable for
Vegan Diet	No		

DIET SUITABILITY

NUTRITIONAL INFORMATION

Each 30g/ml serving contains:



of your reference intake.

Typical values per 30g/ml : Energy 147kcal / 616kj

Nutrient	per 100g/ml	RI per 100g/ml	per 30g/ml serving	RI per 30g/ml serving
Energy (kJ)	2052 kJ	24%	615.6 kJ	7%
Energy (kcal)	490 kcal	25%	147 kcal	7%
Fat	22 g	31%	6.6 g	9%
of which Saturates	9.3 g	47%	2.8 g	14%
Carbohydrate	60 g	23%	18 g	7%
of which Sugars	30 g	33%	9 g	10%
Fibre	3.7 g		1.1 g	
Protein	6.1 g	12%	1.8 g	4%
Salt	0.82 g	14%	0.2 g	3%
Serving Size	30 g			

SUPPLEMENTARY NUTRITIONAL INFORMATION

HANDLING & STORAGE INFORMATION

Directions For Use

n/a

Storage Instructions

Ambient. Store in a cool, dry place away from strong light.

Shelf Life from Time of Production 364 Days

	Other Accreditation					
	Not specified					
ORIGIN	Product Country of Origin/Place of		United Kingdom			
	Provenance					
	Additional Origin Details					
	Made with EU and non EU Wheat Flour and Chocolate Chips.					
PRODUCT CHARACTERISTICS	Standards Testing					
	Do you undertake trend analysis of microbiological results?		No		Is shelf life testing undertaken? No	
	Microbiological Standards					
	Organism	Description	Frequency	Target	Maximum	Sample (g or ml)
	Bacillus Cereus (cfu/g or ml)	EOL	Annually	<20	20	-
	E. Coli (cfu/g or ml)	EOL	Annually	<10	10	-
	Enterobacteriaceae (cfu/g or ml)	EOL	Annually	<10	10	-
	Total Viable Count (TVC) (cfu/g or ml)	EOL	Annually	<1000	10000	-
	Salmonella (cfu/g or ml)	EOL	Annually	<0	0	-
	Yeast (cfu/g or ml)	EOL	Annually	<100	500	-
	Moulds (cfu/g or ml)	EOL	Annually	<100	500	-
CONFIGURATION	Case Configuration			Inner Pack Configuration		
	Total Quantity of Inner Components in Outer Case		100 Units		Count per Inner Component 2	
PRODUCT WEIGHTS	Inner Component					
	Variable Weight Consumer Item		No			
	Inner Component Weight		30 g			
	Weight/Volume					
	30g e					
	Outer Case					
	Outer Case Gross Weight		3.9 kg			
	Outer Case Net Weight		3 kg			
PRODUCT DIMENSIONS	Inner Component					
	Inner Component Depth		120 mm			
	Inner Component Width		62 mm			
	Inner Component Height		22 mm			
	Outer Case					
	Outer Case Depth		406 mm			
	Outer Case Width		301 mm			
	Outer Case Height		187 mm			
PALLET INFORMATION	Quantity of Cases Per Pallet Layer		10 Cases		Pallet Height 1.66 MTR	
	Quantity of Layers Per Pallet		8 Layers		Pallet Gross Weight 342 kg	
	Quantity of Cases Per Pallet		80 Cases			

PACKAGING

Inner Component Packaging

Type	Materials	Weight	Recycled Plastic %	Recyclable	Returnable	Composite
Film	Plastic	25 g	- %			

Outer Case Packaging

Type	Materials	Weight	Recycled Plastic %	Recyclable	Returnable	Composite
Case	Plastic	239.5 g	- %			
Case	Paper/Cardboard	480 g	- %			

Transport Packaging

Type	Materials	Weight	Recycled Plastic %	Recyclable	Returnable	Composite
Other	Plastic	2000 g	- %		Yes	
Other	Wood	28000 g	- %		Yes	

OTHER INFORMATION

Commodity Code	1905319900
-----------------------	------------

Bronte Lemon Flavour Shortcake

Manufacturer Component Code	20261
Inner Component GTIN	072417833984
Outer Case GTIN	05010049202612



INGREDIENTS

Ingredient Declaration

2 lemon flavour oat biscuits

Ingredients: Rolled **OATS**, Sugar, **WHEAT** flour (**WHEAT** flour, Calcium carbonate, Niacin, Iron, Thiamin), Palm oil, Rapeseed oil, Salt, Raising agents (Diphosphates, Sodium bicarbonate), Flavourings, Skimmed **MILK** powder, Colours (Annatto bixin, Curcumin).

ALLERGENS

Product Contains:

Celery/Celery	No	Mustard	No
Cereals Containing Gluten	Yes	Nuts (Tree)	No
Barley	No	Almond nuts	No
Oats	Yes	Brazil nuts	No
Rye	No	Cashew nuts	No
Wheat (including Spelt and Khorasan)	Yes	Hazelnuts	No
Gluten content <20ppm	No	Macadamia (Queensland) nuts	No
Crustacea	No	Pecan nuts	No
Eggs	No	Pistachio nuts	No
Fish	No	Walnuts	No
Lupin	No	Peanuts	No
Milk	Yes	Sesame Seeds	No
Molluscs	No	Soybeans	No
		Sulphur Dioxide and Sulphites	No

Additional Allergen Information

For allergens, including cereals containing gluten, see ingredients in bold.

SUPPLEMENTARY INGREDIENT INFORMATION

Palm Oil	Yes
Hydrogenated Vegetable Oil/Fat	No
GM Protein/DNA	No

ADDITIVES

Product Contains:

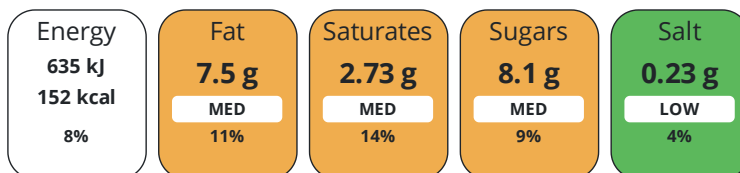
Artificial Antioxidants	No	Artificial Flavourings	No
Artificial Colours	No	Artificial Preservatives	No
Artificial Flavour Enhancers	No	Artificial Sweeteners	No

DIET SUITABILITY

Suitable for Coeliacs	No	Halal Diet	No
Kosher Diet	No	Vegetarian Diet	Suitable for
Vegan Diet	No		

NUTRITIONAL INFORMATION

Each 30g/ml serving contains:



of your reference intake.

Typical values per 30g/ml : Energy 152kcal / 635kJ

Nutrient	per 100g/ml	RI per 100g/ml	per 30g/ml serving	RI per 30g/ml serving
Energy (kJ)	2116 kJ	25%	634.8 kJ	8%
Energy (kcal)	506 kcal	25%	151.8 kcal	8%
Fat	25 g	36%	7.5 g	11%
of which Saturates	9.1 g	46%	2.7 g	14%
Carbohydrate	58 g	22%	17.4 g	7%
of which Sugars	27 g	30%	8.1 g	9%
Fibre	3.5 g		1.1 g	
Protein	5.9 g	12%	1.8 g	4%
Salt	0.78 g	13%	0.2 g	3%
Serving Size	30 g			

SUPPLEMENTARY
NUTRITIONAL
INFORMATION

HANDLING &
STORAGE
INFORMATION

Directions For Use

n/a

Storage Instructions

Ambient. Store in a cool, dry place away from strong light.

Shelf Life from Time of Production 364 Days

ACCREDITATIONS/
CERTIFICATIONS/
ASSURANCE
SCHEMES



Other Accreditation

Not specified.

ORIGIN

Product Country of Origin/Place of United Kingdom

Provenance

Additional Origin Details

Made with EU and non-EU Oats and Wheat Flour.

PRODUCT
CHARACTERISTICS

Standards Testing

Do you undertake trend analysis of microbiological results?	No	Is shelf life testing undertaken?	No
--	----	--	----

Microbiological Standards

Organism	Description	Frequency	Target	Maximum	Sample (g or ml)
Bacillus Cereus (cfu/g or ml)	EOL	Annually	<20	20	-
E. Coli (cfu/g or ml)	EOL	Annually	<10	10	-
Enterobacteriaceae (cfu/g or ml)	EOL	Annually	<10	10	-
Total Viable Count (TVC) (cfu/g or ml)	EOL	Annually	<1000	10000	-
Salmonella (cfu/g or ml)	EOL	Annually	<0	0	-
Yeast (cfu/g or ml)	EOL	Annually	<100	500	-
Moulds (cfu/g or ml)	EOL	Annually	<100	500	-

CONFIGURATION	Case Configuration		Inner Pack Configuration				
	Total Quantity of Inner Components in Outer Case	100 Units	Count per Inner Component		2		
PRODUCT WEIGHTS	Inner Component						
	Variable Weight Consumer Item	No					
	Inner Component Weight	30 g					
	Weight/Volume		30g e				
PRODUCT DIMENSIONS	Outer Case						
	Outer Case Gross Weight	3.9 kg					
	Outer Case Net Weight	3 kg					
	Inner Component						
PALLETT INFORMATION	Inner Component Depth	120 mm					
	Inner Component Width	62 mm					
	Inner Component Height	22 mm					
	Outer Case						
PACKAGING	Outer Case Depth	406 mm					
	Outer Case Width	301 mm					
	Outer Case Height	187 mm					
	Quantity of Cases Per Pallet Layer	10 Cases	Pallet Height	1.66 MTR			
Quantity of Layers Per Pallet	8 Layers	Pallet Gross Weight	342 kg				
Quantity of Cases Per Pallet	80 Cases						
PACKAGING	Inner Component Packaging						
	Type	Materials	Weight	Recycled Plastic %	Recyclable	Returnable	Composite
	Film	Plastic	25 g	- %			
	Outer Case Packaging						
	Type	Materials	Weight	Recycled Plastic %	Recyclable	Returnable	Composite
	Case	Plastic	239.5 g	- %			
	Case	Paper/Cardboard	480 g	- %			
	Transport Packaging						
	Type	Materials	Weight	Recycled Plastic %	Recyclable	Returnable	Composite
	Other	Plastic	2000 g	- %		Yes	
	Other	Wood	28000 g	- %		Yes	
	OTHER INFORMATION	Commodity Code	1905319900				

Bronte Ginger Crunch

Manufacturer Component Code	20261
Inner Component GTIN	072417833908
Outer Case GTIN	05010049202612



INGREDIENTS

Ingredient Declaration

2 biscuits with ground ginger

Ingredients: **WHEAT** flour (**WHEAT** flour, Calcium carbonate, Niacin, Iron, Thiamin), Sugar, Partially inverted sugar syrup, Palm oil, Rapeseed oil, Ground ginger (2%), Raising agents (Sodium bicarbonate, Potassium bicarbonate), Salt, Flavourings, Skimmed **MILK** powder, Colours (Annatto bixin, Curcumin).

ALLERGENS

Product Contains:

Celery/Celeriac	No	Mustard	No
Cereals Containing Gluten	Yes	Nuts (Tree)	No
Barley	No	Almond nuts	No
Oats	No	Brazil nuts	No
Rye	No	Cashew nuts	No
Wheat (including Spelt and Khorasan)	Yes	Hazelnuts	No
Gluten content <20ppm	No	Macadamia (Queensland) nuts	No
Crustacea	No	Pecan nuts	No
Eggs	No	Pistachio nuts	No
Fish	No	Walnuts	No
Lupin	No	Peanuts	No
Milk	Yes	Sesame Seeds	No
Molluscs	No	Soybeans	No
		Sulphur Dioxide and Sulphites	No

Additional Allergen Information

For allergens, including cereals containing gluten, see ingredients in bold.

SUPPLEMENTARY INGREDIENT INFORMATION

Palm Oil	Yes
Hydrogenated Vegetable Oil/Fat	No
GM Protein/DNA	No

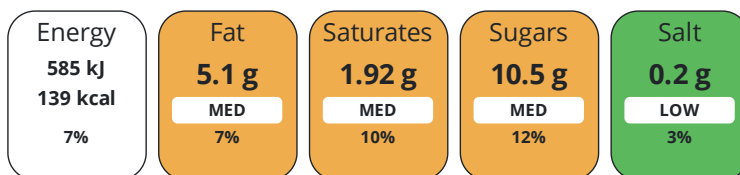
ADDITIVES

Product Contains:

Artificial Antioxidants	No	Artificial Flavourings	No
Artificial Colours	No	Artificial Preservatives	No
Artificial Flavour Enhancers	No	Artificial Sweeteners	No
Suitable for Coeliacs	No	Halal Diet	No
Kosher Diet	No	Vegetarian Diet	Suitable for
Vegan Diet	No		

NUTRITIONAL INFORMATION

Each 30g/ml serving contains:



of your reference intake.

Typical values per 30g/ml : Energy 139kcal / 585kj

Nutrient	per 100g/ml	RI per 100g/ml	per 30g/ml serving	RI per 30g/ml serving
Energy (kJ)	1951 kJ	23%	585.3 kJ	7%
Energy (kcal)	464 kcal	23%	139.2 kcal	7%
Fat	17 g	24%	5.1 g	7%
of which Saturates	6.4 g	32%	1.9 g	10%
Carbohydrate	69 g	27%	20.7 g	8%
of which Sugars	35 g	39%	10.5 g	12%
Fibre	2.1 g		0.6 g	
Protein	5.1 g	10%	1.5 g	3%
Salt	0.65 g	11%	0.2 g	3%
Serving Size	30 g			

SUPPLEMENTARY
NUTRITIONAL
INFORMATION

HANDLING &
STORAGE
INFORMATION

Directions For Use

n/a

Storage Instructions

Ambient. Store in a cool, dry place away from strong light.

Shelf Life from Time of Production 364 Days

ACCREDITATIONS/
CERTIFICATIONS/
ASSURANCE
SCHEMES



Other Accreditation

Not specified.

ORIGIN

Product Country of Origin/Place of United Kingdom

Provenance

Additional Origin Details

Made with EU and non-EU Wheat Flour and Ginger.

PRODUCT
CHARACTERISTICS

Standards Testing

Do you undertake trend analysis of microbiological results? No **Is shelf life testing undertaken?** No

Microbiological Standards

Organism	Description	Frequency	Target	Maximum	Sample (g or ml)
Bacillus Cereus (cfu/g or ml)	EOL	Annually	<20	20	-
E. Coli (cfu/g or ml)	EOL	Annually	<10	10	-
Enterobacteriaceae (cfu/g or ml)	EOL	Annually	<10	10	-
Total Viable Count (TVC) (cfu/g or ml)	EOL	Annually	<1000	10000	-
Salmonella (cfu/g or ml)	EOL	Annually	<0	0	-
Yeast (cfu/g or ml)	EOL	Annually	<100	500	-
Moulds (cfu/g or ml)	EOL	Annually	<100	500	-

CONFIGURATION	Case Configuration		Inner Pack Configuration				
	Total Quantity of Inner Components in Outer Case	100 Units	Count per Inner Component	2			
PRODUCT WEIGHTS	Inner Component						
	Variable Weight Consumer Item	No					
	Inner Component Weight	30 g					
	Weight/Volume	30g e					
PRODUCT DIMENSIONS	Outer Case						
	Outer Case Gross Weight	3.9 kg					
	Outer Case Net Weight	3 kg					
	Inner Component						
PALLETT INFORMATION	Inner Component Depth	120 mm					
	Inner Component Width	62 mm					
	Inner Component Height	22 mm					
	Outer Case						
	Outer Case Depth	406 mm					
	Outer Case Width	301 mm					
PACKAGING	Outer Case Height	187 mm					
	Quantity of Cases Per Pallet Layer	10 Cases	Pallet Height	1.66 MTR			
	Quantity of Layers Per Pallet	8 Layers	Pallet Gross Weight	342 kg			
PACKAGING	Quantity of Cases Per Pallet	80 Cases					
	Inner Component Packaging						
	Type	Materials	Weight	Recycled Plastic %	Recyclable	Returnable	Composite
	Film	Plastic	25 g	- %			
	Outer Case Packaging						
	Type	Materials	Weight	Recycled Plastic %	Recyclable	Returnable	Composite
	Case	Plastic	239.5 g	- %			
	Case	Paper/Cardboard	480 g	- %			
	Transport Packaging						
	Type	Materials	Weight	Recycled Plastic %	Recyclable	Returnable	Composite
Other	Plastic	2000 g	- %		Yes		
Other	Wood	28000 g	- %		Yes		
OTHER INFORMATION	Commodity Code	1905319900					

Bronte Viennese Whirl

Manufacturer Component Code	20261
Inner Component GTIN	072417833892
Outer Case GTIN	05010049202612



INGREDIENTS

Ingredient Declaration

2 vanilla flavour biscuits

Ingredients: **WHEAT** flour (**WHEAT** flour, Calcium carbonate, Niacin, Iron, Thiamin), Sugar, Palm oil, Rapeseed oil, Skimmed **MILK** powder, Salt, Flavourings, Colours (Annatto bixin, Curcumin).

ALLERGENS

Product Contains:

Celery/Celeriac	No	Mustard	No
Cereals Containing Gluten	Yes	Nuts (Tree)	No
Barley	No	Almond nuts	No
Oats	No	Brazil nuts	No
Rye	No	Cashew nuts	No
Wheat (including Spelt and Khorasan)	Yes	Hazelnuts	No
Gluten content <20ppm	No	Macadamia (Queensland) nuts	No
Crustacea	No	Pecan nuts	No
Eggs	No	Pistachio nuts	No
Fish	No	Walnuts	No
Lupin	No	Peanuts	No
Milk	Yes	Sesame Seeds	No
Molluscs	No	Soybeans	No
		Sulphur Dioxide and Sulphites	No

Additional Allergen Information

For allergens, including cereals containing gluten, see ingredients in bold.

SUPPLEMENTARY INGREDIENT INFORMATION

Palm Oil	Yes
Hydrogenated Vegetable Oil/Fat	No
GM Protein/DNA	No

ADDITIVES

Product Contains:

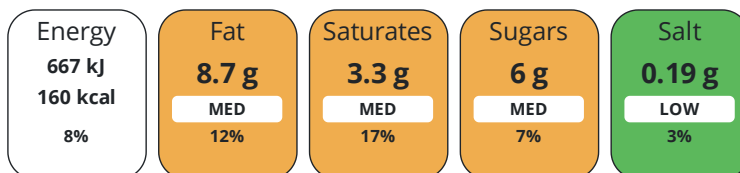
Artificial Antioxidants	No	Artificial Flavourings	Yes
Artificial Colours	No	Artificial Preservatives	No
Artificial Flavour Enhancers	No	Artificial Sweeteners	No

DIET SUITABILITY

Suitable for Coeliacs	No	Halal Diet	No
Kosher Diet	No	Vegetarian Diet	Suitable for
Vegan Diet	No		

NUTRITIONAL INFORMATION

Each 30g/ml serving contains:



of your reference intake.

Typical values per 30g/ml : Energy 160kcal / 667kj

Nutrient	per 100g/ml	RI per 100g/ml	per 30g/ml serving	RI per 30g/ml serving
Energy (kJ)	2224 kJ	26%	667.2 kJ	8%
Energy (kcal)	532 kcal	27%	159.6 kcal	8%
Fat	29 g	41%	8.7 g	12%
of which Saturates	11 g	55%	3.3 g	17%
Carbohydrate	57 g	22%	17.1 g	7%
of which Sugars	20 g	22%	6 g	7%
Fibre	2.1 g		0.6 g	
Protein	5.9 g	12%	1.8 g	4%
Salt	0.64 g	11%	0.2 g	3%
Serving Size	30 g			

SUPPLEMENTARY
NUTRITIONAL
INFORMATION

HANDLING &
STORAGE
INFORMATION

Directions For Use

n/a

Storage Instructions

Ambient. Store in a cool, dry place away from strong light.

Shelf Life from Time of Production

364 Days

ACCREDITATIONS/
CERTIFICATIONS/
ASSURANCE
SCHEMES



Other Accreditation

Not specified.

ORIGIN

Product Country of Origin/Place of United Kingdom

Provenance

Additional Origin Details

Made with EU and non-EU Wheat Flour.

PRODUCT
CHARACTERISTICS

Standards Testing

Do you undertake trend analysis of microbiological results? No

Is shelf life testing undertaken? No

Microbiological Standards

Organism	Description	Frequency	Target	Maximum	Sample (g or ml)
Bacillus Cereus (cfu/g or ml)	EOL	Annually	<20	20	-
E. Coli (cfu/g or ml)	EOL	Annually	<10	10	-
Enterobacteriaceae (cfu/g or ml)	EOL	Annually	<10	10	-
Total Viable Count (TVC) (cfu/g or ml)	EOL	Annually	<1000	10000	-
Salmonella (cfu/g or ml)	EOL	Annually	<0	0	-
Yeast (cfu/g or ml)	EOL	Annually	<100	500	-
Moulds (cfu/g or ml)	EOL	Annually	<100	500	-

CONFIGURATION	Case Configuration		Inner Pack Configuration					
	Total Quantity of Inner Components in Outer Case	100 Units	Count per Inner Component		2			
PRODUCT WEIGHTS	Inner Component							
	Variable Weight Consumer Item	No						
	Inner Component Weight	30 g						
	Weight/Volume		30g e					
PRODUCT DIMENSIONS	Outer Case							
	Outer Case Gross Weight	3.9 kg						
	Outer Case Net Weight	3 kg						
	Inner Component							
PRODUCT DIMENSIONS	Inner Component Depth	120 mm						
	Inner Component Width	62 mm						
	Inner Component Height	22 mm						
	Outer Case							
PALLETT INFORMATION	Outer Case Depth	406 mm						
	Outer Case Width	301 mm						
	Outer Case Height	187 mm						
	Quantity of Cases Per Pallet Layer	10 Cases	Pallet Height	1.66 MTR				
Quantity of Layers Per Pallet	8 Layers	Pallet Gross Weight	342 kg					
Quantity of Cases Per Pallet	80 Cases							
PACKAGING	Inner Component Packaging							
	Type	Materials	Weight	Recycled Plastic %	Recyclable	Returnable	Composite	
	Film	Plastic	25 g	- %				
	Outer Case Packaging							
	Type	Materials	Weight	Recycled Plastic %	Recyclable	Returnable	Composite	
	Case	Plastic	239.5 g	- %				
	Case	Paper/Cardboard	480 g	- %				
	Transport Packaging							
	Type	Materials	Weight	Recycled Plastic %	Recyclable	Returnable	Composite	
	Other	Plastic	2000 g	- %		Yes		
	Other	Wood	28000 g	- %		Yes		
	OTHER INFORMATION	Commodity Code	1905319900					

Bronte Fruit Shortcake

Manufacturer Component Code	20261
Inner Component GTIN	072417833878
Outer Case GTIN	05010049202612



INGREDIENTS

Ingredient Declaration

2 biscuits with currants

Ingredients: **WHEAT** flour (**WHEAT** flour, Calcium carbonate, Niacin, Iron, Thiamin), Sugar, Palm oil, Rapeseed oil, Currants (8%), Raising agents (Diphosphates, Sodium bicarbonate), Salt, Flavourings, Skimmed **MILK** powder, Colours (Annatto bixin, Curcumin).

ALLERGENS

Product Contains:

Celery/Celериac	No	Mustard	No
Cereals Containing Gluten	Yes	Nuts (Tree)	No
Barley	No	Almond nuts	No
Oats	No	Brazil nuts	No
Rye	No	Cashew nuts	No
Wheat (including Spelt and Khorasan)	Yes	Hazelnuts	No
Gluten content <20ppm	No	Macadamia (Queensland) nuts	No
Crustacea	No	Pecan nuts	No
Eggs	No	Pistachio nuts	No
Fish	No	Walnuts	No
Lupin	No	Peanuts	No
Milk	Yes	Sesame Seeds	No
Molluscs	No	Soybeans	No
		Sulphur Dioxide and Sulphites	No

Additional Allergen Information

For allergens, including cereals containing gluten, see ingredients in bold.

SUPPLEMENTARY INGREDIENT INFORMATION

Palm Oil	Yes
Hydrogenated Vegetable Oil/Fat	No
GM Protein/DNA	No

ADDITIVES

Product Contains:

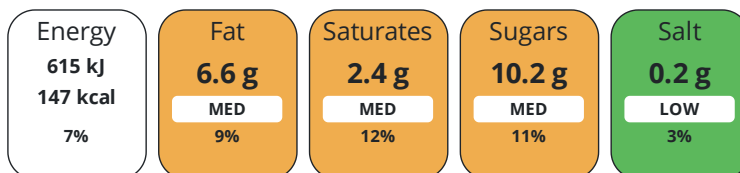
Artificial Antioxidants	No	Artificial Flavourings	Yes
Artificial Colours	No	Artificial Preservatives	No
Artificial Flavour Enhancers	No	Artificial Sweeteners	No

DIET SUITABILITY

Suitable for Coeliacs	No	Halal Diet	No
Kosher Diet	No	Vegetarian Diet	Suitable for
Vegan Diet	No		

NUTRITIONAL INFORMATION

Each 30g/ml serving contains:



of your reference intake.

Typical values per 30g/ml : Energy 147kcal / 615kj

Nutrient	per 100g/ml	RI per 100g/ml	per 30g/ml serving	RI per 30g/ml serving
Energy (kJ)	2050 kJ	24%	615 kJ	7%
Energy (kcal)	489 kcal	24%	146.7 kcal	7%
Fat	22 g	31%	6.6 g	9%
of which Saturates	8 g	40%	2.4 g	12%
Carbohydrate	66 g	25%	19.8 g	8%
of which Sugars	34 g	38%	10.2 g	11%
Fibre	1.7 g		0.5 g	
Protein	4.7 g	9%	1.4 g	3%
Salt	0.68 g	11%	0.2 g	3%
Serving Size	30 g			

SUPPLEMENTARY
NUTRITIONAL
INFORMATION

HANDLING &
STORAGE
INFORMATION

Directions For Use

n/a

Storage Instructions

Ambient. Store in a cool, dry place away from strong light.

Shelf Life from Time of Production 364 Days

ACCREDITATIONS/
CERTIFICATIONS/
ASSURANCE
SCHEMES



Other Accreditation

Not specified.

ORIGIN

Product Country of Origin/Place of United Kingdom

Provenance

Additional Origin Details

Made with EU and non-EU Wheat Flour and Currants.

PRODUCT
CHARACTERISTICS

Standards Testing

Do you undertake trend analysis of microbiological results? No **Is shelf life testing undertaken?** No

Microbiological Standards

Organism	Description	Frequency	Target	Maximum	Sample (g or ml)
Bacillus Cereus (cfu/g or ml)	EOL	Annually	<20	20	-
E. Coli (cfu/g or ml)	EOL	Annually	<10	10	-
Enterobacteriaceae (cfu/g or ml)	EOL	Annually	<10	10	-
Total Viable Count (TVC) (cfu/g or ml)	EOL	Annually	<1000	10000	-
Salmonella (cfu/g or ml)	EOL	Annually	<0	0	-
Yeast (cfu/g or ml)	EOL	Annually	<100	500	-
Moulds (cfu/g or ml)	EOL	Annually	<100	500	-

CONFIGURATION	Case Configuration		Inner Pack Configuration				
	Total Quantity of Inner Components in Outer Case	100 Units	Count per Inner Component		2		
PRODUCT WEIGHTS	Inner Component						
	Variable Weight Consumer Item	No					
	Inner Component Weight	30 g					
	Weight/Volume		30g e				
PRODUCT DIMENSIONS	Outer Case						
	Outer Case Gross Weight	3.9 kg					
	Outer Case Net Weight	3 kg					
	Inner Component						
PALLETT INFORMATION	Inner Component Depth	120 mm					
	Inner Component Width	62 mm					
	Inner Component Height	22 mm					
	Outer Case						
PACKAGING	Outer Case Depth	406 mm					
	Outer Case Width	301 mm					
	Outer Case Height	187 mm					
	Quantity of Cases Per Pallet Layer	10 Cases	Pallet Height	1.66 MTR			
Quantity of Layers Per Pallet	8 Layers	Pallet Gross Weight	342 kg				
Quantity of Cases Per Pallet	80 Cases						
PACKAGING	Inner Component Packaging						
	Type	Materials	Weight	Recycled Plastic %	Recyclable	Returnable	Composite
	Film	Plastic	25 g	- %			
	Outer Case Packaging						
	Type	Materials	Weight	Recycled Plastic %	Recyclable	Returnable	Composite
	Case	Plastic	239.5 g	- %			
	Case	Paper/Cardboard	480 g	- %			
	Transport Packaging						
	Type	Materials	Weight	Recycled Plastic %	Recyclable	Returnable	Composite
	Other	Plastic	2000 g	- %		Yes	
	Other	Wood	28000 g	- %		Yes	
	OTHER INFORMATION	Commodity Code	1905319900				
CONTACT INFORMATION	Address		Technical Contact				
	Burton's Food Limited		Neil Harrison				
	Burtons Biscuits, Charter Court		Group Technical Manager				
	74-78 Victoria St		Neil.Harrison@burtons biscuits.com				
St Albans							
Hertfordshire		P: (Phone) 07590 417654					
AL1 3XH							
United Kingdom							
P: (Phone) 01727899700							

The information on the [Erudus System](#) has been supplied by the manufacturers of the products and, whilst the owners of the Erudus System take steps to ensure the information is regularly updated, they give no warranty and no guarantee that the information is accurate. Product information and ingredients may change, please always read product labels carefully in addition to using the information provided by Erudus.

We do not accept liability for any inaccuracies or incorrect information contained on this site.
Please visit <http://www.erudus.com/terms-and-conditions> for full terms and conditions.