

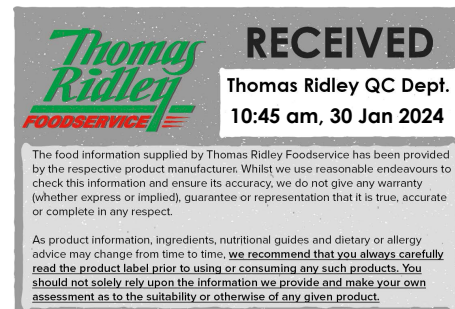
MEADOWLAND DOUBLE MP31 8x1L CT DB UK

Meadowland Double 8x1litre

PRODUCT DESCRIPTION

A blend of buttermilk and vegetable oil.

Brand	Upfield Foods UK
Manufacturer Product Code	91305039
Product Type	Food
Product Category	Cream
Storage Type	Chilled
Erudus ID	1609b3e1b1ee4e93b36209373e8bdd32
Specification Type	Legacy
Inner Component GTIN	8719200077454
Outer Case GTIN	8719200236578



INGREDIENTS

Ingredient Declaration

BUTTERMILK (68%), vegetable oil (fully hydrogenated palm oil, coconut oil, palm) (30%), modified corn starch, emulsifier (sucrose esters of fatty acids, mono and diglycerides of fatty acids), **SOYA** lecithin, **BUTTERMILK** powder, thickeners (guar gum, locust bean gum).

ALLERGENS

Product Contains:

Celery/Celeriac	No	Mustard	No
Cereals Containing Gluten	No	Nuts (Tree)	No
Barley	No	Almond nuts	No
Oats	No	Brazil nuts	No
Rye	No	Cashew nuts	No
Wheat (including Spelt and Khorasan)	No	Hazelnuts	No
Gluten content <20ppm	Yes	Macadamia (Queensland) nuts	No
Crustacea	No	Pecan nuts	No
Eggs	No	Pistachio nuts	No
Fish	No	Walnuts	No
Lupin	No	Peanuts	No
Milk	Yes	Sesame Seeds	No
Molluscs	No	Soybeans	Yes
		Sulphur Dioxide and Sulphites	No

Additional Allergen Information

Milk, soy

SUPPLEMENTARY INGREDIENT INFORMATION

Palm Oil	Yes
Hydrogenated Vegetable Oil/Fat	Yes
GM Protein/DNA	No

ADDITIVES

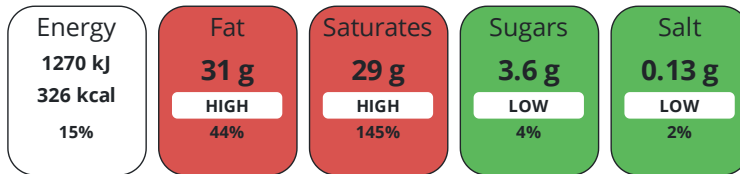
Product Contains:

Artificial Antioxidants	No	Artificial Flavourings	No
Artificial Colours	No	Artificial Preservatives	No
Artificial Flavour Enhancers	No	Artificial Sweeteners	No
Suitable for Coeliacs	Yes	Halal Diet	Suitable for
Kosher Diet	No	Vegetarian Diet	Suitable for
Vegan Diet	No		

DIET SUITABILITY

NUTRITIONAL INFORMATION

Each 100g/ml portion contains:



of your reference intake.

Typical values per 100g/ml : Energy 326kcal / 1270kJ

Nutrient	per 100g/ml	RI per 100g/ml
Energy (kJ)	1270 kJ	15%
Energy (kcal)	326 kcal	16%
Fat	31 g	44%
of which Saturates	29 g	145%
Carbohydrate	4.4 g	2%
of which Sugars	3.6 g	4%
Protein	2.4 g	5%
Salt	0.13 g	2%
Sodium	52 mg	

SUPPLEMENTARY NUTRITIONAL INFORMATION

HFSS (HIGH IN FAT, SALT AND SUGAR) HANDLING & STORAGE INFORMATION

HFSS Status	No
Directions For Use	For cooking: use straight from the pack like dairy cream For pouring: use straight from the pack For whipping: for best result chill before whipping.
Storage Instructions	For optimum quality store between 2-8C Once opened, keep refrigerated and use within 3 days. Do not freeze
Shelf Life from Time of Production	270 Days

ACCREDITATIONS/ CERTIFICATIONS/ ASSURANCE SCHEMES



ORIGIN

Product Country of Origin/Place of Provenance	Germany
Additional Origin Details	Kleve

PRODUCT CHARACTERISTICS	Standards Testing						
	Do you undertake trend analysis of microbiological results?	No	Is shelf life testing undertaken?		Yes		
CONFIGURATION	Case Configuration		Inner Pack Configuration				
	Total Quantity of Inner Components in Outer Case	8 Units					
PRODUCT WEIGHTS	Inner Component						
	Variable Weight Consumer Item	No					
	Inner Component Volume	1 litre					
	Weight/Volume		8 x 1L				
	Outer Case						
	Outer Case Gross Weight	8.42 kg					
	Outer Case Net Weight	8.08 kg					
PRODUCT DIMENSIONS	Inner Component						
	Inner Component Depth	63 mm					
	Inner Component Width	94 mm					
	Inner Component Height	171 mm					
	Outer Case						
	Outer Case Depth	266 mm					
	Outer Case Width	200 mm					
	Outer Case Height	175 mm					
PALLET INFORMATION	Quantity of Cases Per Pallet Layer	18 Cases	Pallet Height	1.21 MTR			
	Quantity of Layers Per Pallet	6 Layers	Pallet Gross Weight	937.36 kg			
	Quantity of Cases Per Pallet	108 Cases					
PACKAGING	Inner Component Packaging						
	Type	Materials	Weight	Recycled Plastic %	Recyclable	Returnable	Composite
	Tetra Pack	Plastic	7 g	- %			
	Tetra Pack	Paper/Cardboard	27 g	- %			
	Tetra Pack	Aluminium	0.1 g	- %			
	Outer Case Packaging						
	Type	Materials	Weight	Recycled Plastic %	Recyclable	Returnable	Composite
	Case	Paper/Cardboard	188 g	- %			
	Transport Packaging						
	Type	Materials	Weight	Recycled Plastic %	Recyclable	Returnable	Composite
	Other	Wood	22000 g	- %			
	OTHER INFORMATION	Manufacturer Comments					
		- 2.5 x whipping volume - After whipping can be stored for up to 4 hours - Heat stable - Acid stable - Quick thickening - Freeze - thaw stable in application - Baine Marie stable - Gluten free - Halal - Sustainable palm oil					

CONTACT
INFORMATION

Address

Upfield Foods UK
Upfield UK Services Limited
14-21 Rushworth Street
London
London
SE1 0RB
United Kingdom

~~P. (Phone)~~ TBC

Technical Contact

Alessandra Gangemi
Technical specialist
alessandra.gangemi@upfield.com

The information on the [Erudus System](#) has been supplied by the manufacturers of the products and, whilst the owners of the Erudus System take steps to ensure the information is regularly updated, they give no warranty and no guarantee that the information is accurate. Product information and ingredients may change, please always read product labels carefully in addition to using the information provided by Erudus.

We do not accept liability for any inaccuracies or incorrect information contained on this site.
Please visit <http://www.erudus.com/terms-and-conditions> for full terms and conditions.