

Changed Apr 05, 2024 09:10

Reviewed Apr 01, 2024 17:39

Erudus ID 350d595e664046fa9b4df5d0f4584ebb

Version 1.0

This specification is published by [Erudus](#) for Caterfood Buying Group

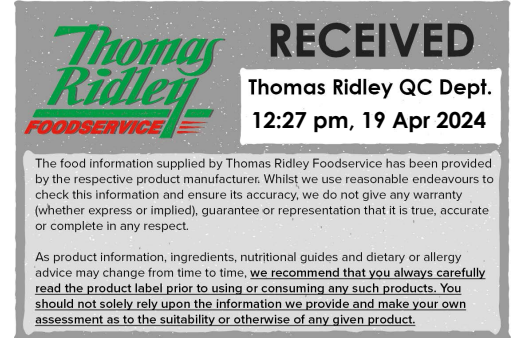
Walnut Pieces

Walnut Pieces 6x1kg

PRODUCT DESCRIPTION

Crisp, wholesome Walnut Pieces with no off flavours or odours.

Brand	Caterfood Buying Group
Label Own Label Code	C10036
Product Type	Food
Product Category	Nuts and Seeds
Storage Type	Ambient
Erudus ID	350d595e664046fa9b4df5d0f4584ebb
Specification Type	Generic
Inner Component GTIN	5060158878031
Outer Case GTIN	5060158878024



INGREDIENTS

Ingredient Declaration

WALNUT Pieces

ALLERGENS

Product Contains:

Celery/Celeriac	No	Mustard	No
Cereals Containing Gluten	No	Nuts (Tree)	Yes
Barley	No	Almond nuts	May Contain
Oats	No	Brazil nuts	May Contain
Rye	No	Cashew nuts	May Contain
Wheat (including Spelt and Khorasan)	No	Hazelnuts	May Contain
Crustacea	No	Macadamia (Queensland) nuts	May Contain
Eggs	No	Pecan nuts	May Contain
Fish	No	Pistachio nuts	May Contain
Lupin	No	Walnuts	Yes
Milk	No	Peanuts	May Contain
Molluscs	No	Sesame Seeds	No
		Soybeans	No
		Sulphur Dioxide and Sulphites	No

Risk Source:

Allergen Statement On Pack

For allergens, see ingredients in CAPITALS. May also contains peanuts and other nuts.

SUPPLEMENTARY INGREDIENT INFORMATION

Palm Oil	No
Hydrogenated Vegetable Oil/Fat	No
GM Protein/DNA	No

ADDITIVES

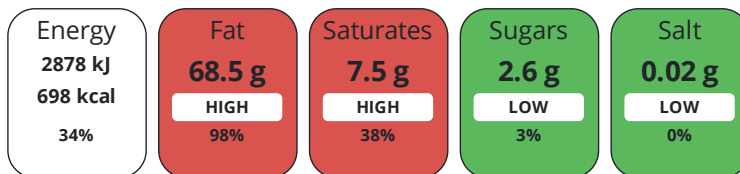
Product Contains:

Artificial Antioxidants	No	Artificial Flavourings	No
Artificial Colours	No	Artificial Preservatives	No
Artificial Flavour Enhancers	No	Artificial Sweeteners	No
Vegan Diet	Suitable for	Vegetarian Diet	Suitable for
Halal Diet	No	Kosher Diet	No

DIET SUITABILITY

NUTRITIONAL INFORMATION

Each 100g/ml portion contains:



of your reference intake.

Typical values per 100g/ml : Energy 698kcal / 2878kJ

Nutrient	per 100g	RI per 100g
Energy (kJ)	2878 kJ	34%
Energy (kcal)	698 kcal	35%
Fat	68.5 g	98%
of which Saturates	7.5 g	38%
of which Mono-unsaturates	0 g	
of which Polyunsaturates	0 g	
Carbohydrate	3.3 g	1%
of which Sugars	2.6 g	3%
Fibre	4.7 g	
Protein	14.7 g	29%
Salt	0.02 g	0%
Sodium	7 mg	

Serving Size Description 100.00

VITAMINS AND MINERALS

Nutrient	per 100g	RI per 100g
Vitamin A	0 µg	0%
Vitamin D	0 µg	0%
Vitamin C	0 mg	0%
Thiamin (B1)	0 mg	0%
Riboflavin (B2)	0 mg	0%
Niacin (B3)	0 mg	0%
Folate/Folic Acid	66 µg	33%
Potassium	450 mg	23%
Calcium	94 mg	12%
Phosphorus	380 mg	54%
Magnesium	160 mg	43%
Iron	2.9 mg	21%
Zinc	2.7 mg	27%

SUPPLEMENTARY
NUTRITIONAL
INFORMATION

HANDLING &
STORAGE
INFORMATION

Directions For Use

Store in cool dry conditions

Storage Instructions

Store in cool dry conditions

Storage Instructions After Opening

Store in cool dry conditions

Shelf Life from Time of Production	365 Days	Exempt From Shelf Life Labelling	No
-------------------------------------------	----------	-----------------------------------------	----

BRCGS Certified		BRCGS Start!	
------------------------	--	---------------------	--

Other Accreditation			
----------------------------	--	--	--

ACCREDITATIONS/
CERTIFICATIONS/
ASSURANCE
SCHEMES
ORIGIN

Product Country of Origin/Place of Provenance	China, India, United States of America		
------------------------------------------------------	----------------------------------------	--	--

PRODUCT
CHARACTERISTICS

Standards Testing			
-------------------	--	--	--

Do you undertake trend analysis of microbiological results?	No	Is shelf life testing undertaken?	Yes
--------------------------------------------------------------------	----	------------------------------------------	-----

CONFIGURATION

Case Configuration		Inner Pack Configuration	
--------------------	--	--------------------------	--

Total Quantity of Inner Components in Outer Case	6 Units		
---------------------------------------------------------	---------	--	--

Is the Outer Case Splittable?	Yes		
--------------------------------------	-----	--	--

PRODUCT
WEIGHTS

Inner Component			
-----------------	--	--	--

Variable Weight Consumer Item	No		
--------------------------------------	----	--	--

Inner Component Weight	1 kg		
-------------------------------	------	--	--

e mark	Yes		
---------------	-----	--	--

Outer Case			
------------	--	--	--

Outer Case Gross Weight	6.55 kg		
--------------------------------	---------	--	--

Outer Case Net Weight	6 kg		
------------------------------	------	--	--

PRODUCT
DIMENSIONS

Inner Component			
-----------------	--	--	--

Inner Component Depth	340 mm		
------------------------------	--------	--	--

Inner Component Width	225 mm		
------------------------------	--------	--	--

Inner Component Height	340 mm		
-------------------------------	--------	--	--

Outer Case			
------------	--	--	--

Outer Case Depth	390 mm		
-------------------------	--------	--	--

Outer Case Width	300 mm		
-------------------------	--------	--	--

Outer Case Height	190 mm		
--------------------------	--------	--	--

PALLET
INFORMATION

Quantity of Cases Per Pallet Layer	10 Cases	Pallet Height	1.3 MTR
-------------------------------------------	----------	----------------------	---------

Quantity of Layers Per Pallet	6 Layers	Pallet Gross Weight	393 kg
--------------------------------------	----------	----------------------------	--------

Quantity of Cases Per Pallet	60 Cases		
-------------------------------------	----------	--	--

PACKAGING

Inner Component Packaging						
---------------------------	--	--	--	--	--	--

Type	Materials	Weight	Recycled Plastic %	Recyclable	Returnable	Composite
------	-----------	--------	--------------------	------------	------------	-----------

Bag	Plastic	12 g	0.00 %			
-----	---------	------	--------	--	--	--

Bag	Paper/Cardboard	2 g	- %			
-----	-----------------	-----	-----	--	--	--

Outer Case Packaging

Type	Materials	Weight	Recycled Plastic %	Recyclable	Returnable	Composite
Label	Paper/Cardboard	2 g	- %			
Case	Paper/Cardboard	428 g	- %			

Transport Packaging

Type	Materials	Weight	Recycled Plastic %	Recyclable	Returnable	Composite
Pallet	Wood	1800 g	- %			

OTHER INFORMATION

Intrastat/Taric Code 8023200

Product Health Warning

Although every care has been taken to remove shell, some small fragments may remain.

CONTACT INFORMATION

ADDRESS

Caterfood Buying Group
BFS Group Ltd
814 Leigh Road
Slough
Berkshire
SL1 4BD
United Kingdom

The information on the [Erudus System](#) has been supplied by the manufacturers of the products and, whilst the owners of the Erudus System take steps to ensure the information is regularly updated, they give no warranty and no guarantee that the information is accurate. Product information and ingredients may change, please always read product labels carefully in addition to using the information provided by Erudus.

We do not accept liability for any inaccuracies or incorrect information contained on this site.
Please visit <http://www.erudus.com/terms-and-conditions> for full terms and conditions.