

Changed Apr 08, 2024 07:31

Reviewed Apr 01, 2024 18:26

Erudus ID 4899e1371bb24901ac6483d035604998

Version 1.0



This specification is published by [Erudus](#) for Caterfood Buying Group

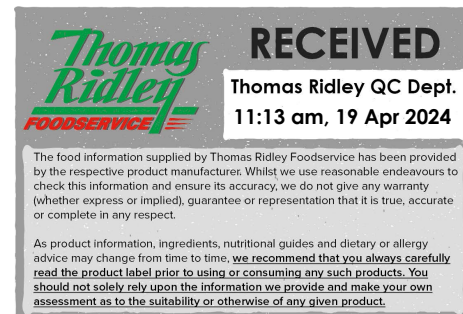
Pitted Dates

Pitted Dates 4x3kg

PRODUCT DESCRIPTION

Whole pitted sayer dates. Pitted Dates are typical of the sagre variety and are brown in colour with the characteristic flavour of dates.

Brand	Caterfood Buying Group
Label Own Label Code	C10032
Product Type	Food
Product Category	Fruit - Dried/Powdered
Storage Type	Ambient
Erudus ID	4899e1371bb24901ac6483d035604998
Specification Type	Fruit and Vegetables
Inner Component GTIN	5060158877959
Outer Case GTIN	5060158877942



INGREDIENTS

Ingredient Declaration

Dried Pitted Dates (99%), Sunflower Oil

ALLERGENS

Product Contains:

Celery/Celeriac	No	Mustard	No
Cereals Containing Gluten	No	Nuts (Tree)	No
Barley	No	Almond nuts	No
Oats	No	Brazil nuts	No
Rye	No	Cashew nuts	No
Wheat (including Spelt and Khorasan)	No	Hazelnuts	No
Crustacea	No	Macadamia (Queensland) nuts	No
Eggs	No	Pecan nuts	No
Fish	No	Pistachio nuts	No
Lupin	No	Walnuts	No
Milk	No	Peanuts	No
Molluscs	No	Sesame Seeds	No
		Soybeans	No
		Sulphur Dioxide and Sulphites	No

SUPPLEMENTARY INGREDIENT INFORMATION

Palm Oil	No
Hydrogenated Vegetable Oil/Fat	No
GM Protein/DNA	No

ADDITIVES

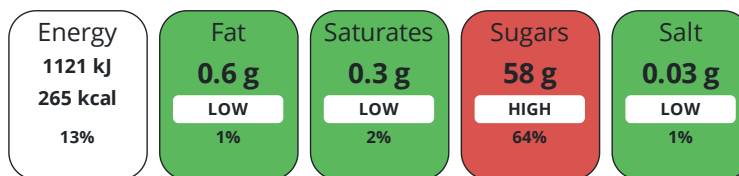
Product Contains:

Artificial Antioxidants	No	Artificial Flavourings	No
Artificial Colours	No	Artificial Preservatives	No
Artificial Flavour Enhancers	No	Artificial Sweeteners	No
Vegan Diet	Suitable for	Vegetarian Diet	Suitable for
Halal Diet	No	Kosher Diet	No

DIET
SUITABILITY

NUTRITIONAL
INFORMATION

Each 100g/ml portion contains:



of your reference intake.

Typical values per 100g/ml : Energy 265kcal / 1121kJ

Nutrient	per 100g	RI per 100g
Energy (kJ)	1121 kJ	13%
Energy (kcal)	265 kcal	13%
Fat	0.6 g	1%
of which Saturates	0.3 g	2%
of which Mono-unsaturates	0 g	
of which Polyunsaturates	0 g	
Carbohydrate	58.7 g	23%
of which Sugars	58 g	64%
of which Starch	0 g	
Fibre	7.5 g	
Protein	2.4 g	5%
Salt	0.03 g	1%
Sodium	11 mg	
Serving Size Description	100.00	

VITAMINS AND MINERALS

Nutrient	per 100g	RI per 100g
Vitamin A	0 µg	0%
Vitamin D	0 µg	0%
Vitamin C	0 mg	0%
Thiamin (B1)	0 mg	0%
Riboflavin (B2)	0 mg	0%
Niacin (B3)	0 mg	0%
Folate/Folic Acid	13 µg	7%
Potassium	727 mg	36%
Calcium	68 mg	9%
Phosphorus	68 mg	10%
Magnesium	55 mg	15%
Iron	2.21 mg	16%
Zinc	0.4 mg	4%

SUPPLEMENTARY NUTRITIONAL INFORMATION

HANDLING & STORAGE INFORMATION

Directions For Use

Once opened please store in an airtight container in a cool, dry place.

Storage Instructions

Once opened please store in an airtight container in a cool, dry place.

Storage Instructions After Opening

Once opened please store in an airtight container in a cool, dry place.

Shelf Life from Time of Production	365 Days	Exempt From Shelf Life Labelling	No
---	----------	---	----

BRCGS Certified		BRCGS Start!	
------------------------	--	---------------------	--

Other Accreditation

Product Country of Origin/Place of Iran, Pakistan

Provenance

Additional Origin Details

Iran, Pakistan

PRODUCT CHARACTERISTICS

Standards Testing

Do you undertake trend analysis of microbiological results?	No	Is shelf life testing undertaken?	Yes
--	----	--	-----

CONFIGURATION

Case Configuration

Inner Pack Configuration

Total Quantity of Inner Components in 4 Units

Outer Case

Is the Outer Case Splittable? No

PRODUCT WEIGHTS

Inner Component

Variable Weight Consumer Item No

Inner Component Weight 3 kg

e mark Yes

Outer Case

Outer Case Gross Weight 12.51 kg

Outer Case Net Weight 12 kg

PRODUCT DIMENSIONS

Inner Component	
Inner Component Depth	380 mm
Inner Component Width	280 mm
Inner Component Height	80 mm
Outer Case	
Outer Case Depth	390 mm
Outer Case Width	300 mm
Outer Case Height	190 mm

PALLET INFORMATION

Quantity of Cases Per Pallet Layer	10 Cases	Pallet Height	1.3 MTR
Quantity of Layers Per Pallet	6 Layers	Pallet Gross Weight	750.6 kg
Quantity of Cases Per Pallet	60 Cases		

PACKAGING

Inner Component Packaging						
Type	Materials	Weight	Recycled Plastic %	Recyclable	Returnable	Composite
Bag	Plastic	18 g	- %			
Label	Paper/Cardboard	2 g	- %			
Outer Case Packaging						
Type	Materials	Weight	Recycled Plastic %	Recyclable	Returnable	Composite
Label	Plastic	2 g	- %			
Case	Paper/Cardboard	428 g	- %			
Transport Packaging						
Type	Materials	Weight	Recycled Plastic %	Recyclable	Returnable	Composite
Pallet	Wood	1800 g	- %			

OTHER INFORMATION

Intrastat/Taric Code	8041000
-----------------------------	---------

Product Health Warning

Although every care has been taken to remove stones, some small fragments may remain.

CONTACT INFORMATION

ADDRESS
Caterfood Buying Group BFS Group Ltd 814 Leigh Road Slough Berkshire SL1 4BD United Kingdom

The information on the [Erudus System](#) has been supplied by the manufacturers of the products and, whilst the owners of the Erudus System take steps to ensure the information is regularly updated, they give no warranty and no guarantee that the information is accurate. Product information and ingredients may change, please always read product labels carefully in addition to using the information provided by Erudus.

We do not accept liability for any inaccuracies or incorrect information contained on this site. Please visit <http://www.erudus.com/terms-and-conditions> for full terms and conditions.