

Changed Apr 05, 2024 08:41

Reviewed Apr 01, 2024 18:29

Erudus ID b489c8996de34178ad606932fa3a9b39

Version 1.0

This specification is published by [Erudus](#) for Caterfood Buying Group

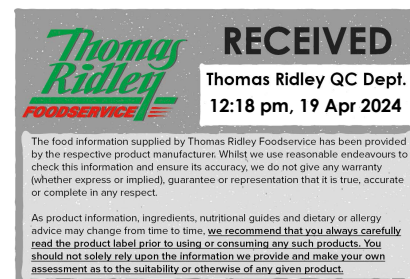
Ground Almonds

Ground Almonds

PRODUCT DESCRIPTION

Creamy white to ivory yellow Ground Almonds. Light and floury free from oiliness

Brand	Caterfood Buying Group
Label Own Label Code	C10034
Product Type	Food
Product Category	Nuts and Seeds
Storage Type	Ambient
Erudus ID	b489c8996de34178ad606932fa3a9b39
Specification Type	Generic
Inner Component GTIN	5060158877997
Outer Case GTIN	5060158877980



INGREDIENTS

Ingredient Declaration

Ground ALMONDS

ALLERGENS

Product Contains:

Celery/Celeriac	No	Mustard	No
Cereals Containing Gluten	No	Nuts (Tree)	Yes
Barley	No	Almond nuts	Yes
Oats	No	Brazil nuts	May Contain
Rye	No	Cashew nuts	May Contain
Wheat (including Spelt and Khorasan)	No	Hazelnuts	May Contain
Crustacea	No	Macadamia (Queensland) nuts	May Contain
Eggs	No	Pecan nuts	May Contain
Fish	No	Pistachio nuts	May Contain
Lupin	No	Walnuts	May Contain
Milk	No	Peanuts	May Contain
Molluscs	No	Sesame Seeds	No
		Soybeans	No
		Sulphur Dioxide and Sulphites	No

Risk Source:

Allergen Statement On Pack

For allergens, see ingredients in CAPITALS. May also contain peanuts and other nuts.

SUPPLEMENTARY INGREDIENT INFORMATION

Palm Oil	No
Hydrogenated Vegetable Oil/Fat	No
GM Protein/DNA	No

ADDITIVES

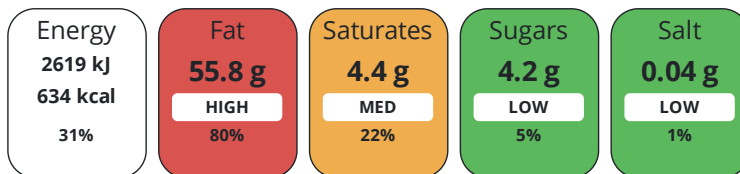
Product Contains:

Artificial Antioxidants	No	Artificial Flavourings	No
Artificial Colours	No	Artificial Preservatives	No
Artificial Flavour Enhancers	No	Artificial Sweeteners	No
Vegan Diet	Suitable for	Vegetarian Diet	Suitable for
Halal Diet	No	Kosher Diet	No

DIET
SUITABILITY

NUTRITIONAL
INFORMATION

Each 100g/ml portion contains:



of your reference intake.

Typical values per 100g/ml : Energy 634kcal / 2619kj

Nutrient	per 100g	RI per 100g	per 100g serving	RI per 100g serving
Energy (kJ)	2619 kJ	31%	2619 kJ	31%
Energy (kcal)	634 kcal	32%	634 kcal	32%
Fat	55.8 g	80%	55.8 g	80%
of which Saturates	4.4 g	22%	4.4 g	22%
Carbohydrate	6.9 g	3%	6.9 g	3%
of which Sugars	4.2 g	5%	4.2 g	5%
Fibre	9.8 g		9.8 g	
Protein	21.1 g	42%	21.1 g	42%
Salt	0.04 g	1%	-	
Sodium	14 mg		14 mg	
Serving Size	100 g			

VITAMINS AND
MINERALS

Nutrient	per 100g	RI per 100g	per 100g serving	RI per 100g serving
Vitamin A	0 µg	0%	-	
Vitamin D	0 µg	0%	-	
Vitamin C	0 mg	0%	-	
Thiamin (B1)	0 mg	0%	-	
Riboflavin (B2)	0 mg	0%	-	
Niacin (B3)	0 mg	0%	-	
Folate/Folic Acid	48 µg	24%	48 µg	24%
Potassium	780 mg	39%	780 mg	39%
Calcium	240 mg	30%	240 mg	30%
Phosphorus	550 mg	79%	550 mg	79%
Magnesium	270 mg	72%	270 mg	72%
Iron	3 mg	21%	3 mg	21%
Zinc	3.2 mg	32%	3.2 mg	32%

SUPPLEMENTARY
NUTRITIONAL
INFORMATION

HANDLING &
STORAGE
INFORMATION

Directions For Use

Store in cool dry conditions

Storage Instructions

Store in cool dry conditions

Storage Instructions After Opening

Store in cool dry conditions

Shelf Life from Time of Production	365 Days	Exempt From Shelf Life Labelling	No
---	----------	---	----

ACCREDITATIONS/
CERTIFICATIONS/
ASSURANCE
SCHEMES
ORIGIN

BRCGS Certified		BRCGS Start!	
------------------------	--	---------------------	--

Other Accreditation

Product Country of Origin/Place of Australia, Italy, Netherlands (the), Spain, United States of America

Provenance

Additional Origin Details

Spain, USA, Australia, Italy, Netherlands

PRODUCT
CHARACTERISTICS

Standards Testing

Do you undertake trend analysis of microbiological results?	No	Is shelf life testing undertaken?	Yes
--	----	--	-----

CONFIGURATION

Case Configuration

Inner Pack Configuration

Total Quantity of Inner Components in Outer Case	6 Units
---	---------

Is the Outer Case Splittable?	No
--------------------------------------	----

PRODUCT
WEIGHTS

Inner Component

Variable Weight Consumer Item	Yes
--------------------------------------	-----

Inner Component Weight	1 kg
-------------------------------	------

e mark	Yes
---------------	-----

Outer Case

Outer Case Gross Weight	6.55 kg
--------------------------------	---------

Outer Case Net Weight	6 kg
------------------------------	------

PRODUCT
DIMENSIONS

Inner Component

Inner Component Depth	340 mm
------------------------------	--------

Inner Component Width	225 mm
------------------------------	--------

Inner Component Height	340 mm
-------------------------------	--------

Outer Case

Outer Case Depth	390 mm
-------------------------	--------

Outer Case Width	300 mm
-------------------------	--------

Outer Case Height	190 mm
--------------------------	--------

PALLET
INFORMATION

Quantity of Cases Per Pallet Layer	10 Cases	Pallet Height	1.3 MTR
---	----------	----------------------	---------

Quantity of Layers Per Pallet	6 Layers
--------------------------------------	----------

Quantity of Cases Per Pallet	60 Cases
-------------------------------------	----------

PACKAGING

Inner Component Packaging

Type	Materials	Weight	Recycled Plastic %	Recyclable	Returnable	Composite
Bag	Plastic	14 g	0.00 %			
Label	Paper/Cardboard	2 g	- %			

Outer Case Packaging

Type	Materials	Weight	Recycled Plastic %	Recyclable	Returnable	Composite
Case	Paper/Cardboard	428 g	- %			
Label	Paper/Cardboard	2 g	- %			

Transport Packaging

Type	Materials	Weight	Recycled Plastic %	Recyclable	Returnable	Composite
Other	Wood	1800 g	- %			

OTHER INFORMATION

Intrastat/Taric Code 8021290

Product Health Warning

Although every care has been taken to remove shell, some small fragments may remain.

CONTACT INFORMATION

ADDRESS

Caterfood Buying Group
BFS Group Ltd
814 Leigh Road
Slough
Berkshire
SL1 4BD
United Kingdom

The information on the [Erudus System](#) has been supplied by the manufacturers of the products and, whilst the owners of the Erudus System take steps to ensure the information is regularly updated, they give no warranty and no guarantee that the information is accurate. Product information and ingredients may change, please always read product labels carefully in addition to using the information provided by Erudus.

We do not accept liability for any inaccuracies or incorrect information contained on this site.
Please visit <http://www.erudus.com/terms-and-conditions> for full terms and conditions.