

Changed Jan 02, 2024 16:00

Erudus ID 73635655390f4dfaafe0b97d51a9cca9

Version 1.0

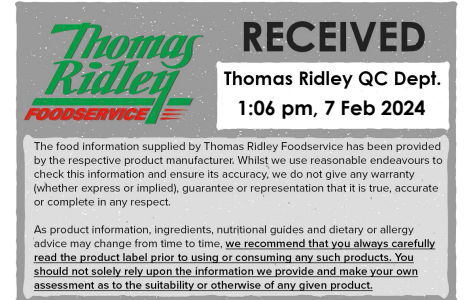
# NESTLE The Big Biscuit Box 69 Pcs

Nestle Big Biscuit Box. Nestle Kit Kat And Friends. 1x1.36kg

## PRODUCT DESCRIPTION

An assortment of 69 chocolate biscuit bars including KIT KAT , BLUE RIBAND and TOFFEE CRISP.

Brand	Nestle UK
Manufacturer Product Code	12537542
Product Type	Food
Product Category	Confectionery
Storage Type	Ambient
Erudus ID	73635655390f4dfaafe0b97d51a9cca9
Specification Type	Legacy
Inner Component GTIN	08445290576095
Outer Case GTIN	08445290576095



**Ingredient Declaration**

**KITKAT 2 finger MILK 21x20.7g**

Two crispy wafer fingers covered with milk chocolate (66%)

Ingredients- sugar, **WHEAT** flour (contains calcium, iron, thiamin and niacin), whole **MILK** powder, cocoa mass, cocoa butter, vegetable fats (palm, shea, palm kernel, sal), whey powder product (**MILK**), skimmed **MILK** powder, emulsifier (lecithins), yeast, raising agent (sodium bicarbonate), glucose syrup, butterfat (**MILK**), whey powder (**MILK**), natural flavourings.

Rainforest alliance certified cocoa. Find out more at ra.org

**KITKAT 2 finger Dark 9x20.7g**

Two crispy wafer fingers covered in dark chocolate (66%).

Ingredients- sugar, cocoa mass, **WHEAT** flour (contains calcium, iron, thiamin and niacin), vegetable fats (palm, shea, palm kernel, shea, sal), cocoa butter, butterfat (**MILK**), emulsifier (lecithins), whole **MILK** powder, whey powder product (**MILK**), yeast, raising agent (sodium bicarbonate), skimmed **MILK** powder, glucose syrup, whey powder (**MILK**), natural flavourings.

Rainforest alliance certified cocoa. Find out more at ra.org

**KITKAT 2 finger Orange 9x20.7g**

Two crispy wafer fingers covered in orange chocolate (66%).

Ingredients- sugar, **WHEAT** flour (contains calcium, iron, thiamin and niacin), whole **MILK** powder, cocoa mass, cocoa butter, vegetable fats (palm, shea, palm kernel, sal), whey powder product (**MILK**), skimmed **MILK** powder, emulsifier (lecithins), natural orange flavouring, yeast, raising agent (sodium bicarbonate), glucose syrup, butterfat (**MILK**), whey powder (**MILK**), natural flavourings.

Rainforest alliance certified cocoa. Find out more at ra.org

**TOFFEE CRISP 14x18.7g**

Biscuit pieces, crisped cereal (14%) and caramel (20%) covered in milk chocolate.

Ingredients- sugar, vegetable fats (palm, coconut, shea, sunflower), glucose-fructose syrup, **WHEAT** flour, whey powder product (**MILK**), sweetened condensed **MILK** (**MILK**, sugar), cocoa butter, rice flour, dried whole **MILK**, cocoa mass, fat-reduced cocoa powder, emulsifier (lecithins), salt, malted **BARLEY** flour, firming agent (calcium carbonate), caramelised sugar, raising agent (sodium bicarbonate), **WHEAT** starch, flavouring.

**BLUE RIBAND 16x18g**

Crisp wafer biscuit covered in real milk chocolate (47%).

Ingredients- sugar, **WHEAT** flour, vegetable fats (palm, shea), cocoa butter, whole **MILK** powder, cocoa mass, whey powder (**MILK**), maltodextrin, emulsifier (lecithins), fat-reduced cocoa powder, flavourings, raising agent (sodium bicarbonate), salt.

Occasionally it may be necessary to replace a biscuit with another of equally high quality.

ALLERGENS

Product Contains:

<b>Celery/Celeriac</b>	No	<b>Mustard</b>	No
<b>Cereals Containing Gluten</b>	Yes	<b>Nuts (Tree)</b>	May Contain
<b>Barley</b>	Yes	<b>Almond nuts</b>	May Contain
<b>Oats</b>	No	<b>Brazil nuts</b>	May Contain
<b>Rye</b>	No	<b>Cashew nuts</b>	May Contain
<b>Wheat (including Spelt and Khorasan)</b>	Yes	<b>Hazelnuts</b>	May Contain
<b>Gluten content &lt;20ppm</b>	No	<b>Macadamia (Queensland) nuts</b>	May Contain
<b>Crustacea</b>	No	<b>Pecan nuts</b>	May Contain
<b>Eggs</b>	No	<b>Pistachio nuts</b>	May Contain
<b>Fish</b>	No	<b>Walnuts</b>	May Contain
<b>Lupin</b>	No	<b>Peanuts</b>	May Contain
<b>Milk</b>	Yes	<b>Sesame Seeds</b>	No
<b>Molluscs</b>	No	<b>Soybeans</b>	May Contain
		<b>Sulphur Dioxide and Sulphites</b>	No

Risk Source:

### Additional Allergen Information

Contains WHEAT & BARLEY. TOFFEE CRISP and BLUE RIBAND may contain PEANUTS, TREE NUTS and SOYA.

#### SUPPLEMENTARY INGREDIENT INFORMATION

<b>Palm Oil</b>	Yes
<b>Hydrogenated Vegetable Oil/Fat</b>	No
<b>GM Protein/DNA</b>	No

#### ADDITIVES

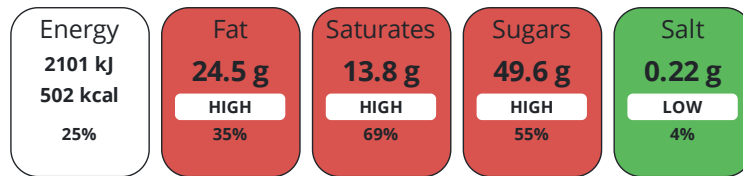
Product Contains:

<b>Artificial Antioxidants</b>	No	<b>Artificial Flavourings</b>	No
<b>Artificial Colours</b>	No	<b>Artificial Preservatives</b>	No
<b>Artificial Flavour Enhancers</b>	No	<b>Artificial Sweeteners</b>	No
<b>Suitable for Coeliacs</b>	No	<b>Halal Diet</b>	No
<b>Kosher Diet</b>	No	<b>Vegetarian Diet</b>	Suitable for
<b>Vegan Diet</b>	No		

#### DIET SUITABILITY

#### NUTRITIONAL INFORMATION

Each 100g/ml portion contains:



of your reference intake.

Typical values per 100g/ml : Energy 502kcal / 2101kJ

Nutrient	per 100g/ml	RI per 100g/ml
<b>Energy (kJ)</b>	2101 kJ	25%
<b>Energy (kcal)</b>	502 kcal	25%
<b>Fat</b>	24.5 g	35%
of which Saturates	13.8 g	69%
<b>Carbohydrate</b>	62.5 g	24%
of which Sugars	49.6 g	55%
<b>Fibre</b>	2.3 g	
<b>Protein</b>	6.9 g	14%
<b>Salt</b>	0.22 g	4%

#### SUPPLEMENTARY NUTRITIONAL INFORMATION

#### HANDLING & STORAGE INFORMATION

##### Directions For Use

Ready to eat

##### Storage Instructions

Store in a cool, dry place.

**Shelf Life from Time of Production** 270 Days

#### ACCREDITATIONS/ CERTIFICATIONS/ ASSURANCE SCHEMES



ORIGIN	<b>Product Country of Origin/Place of Provenance</b>	United Kingdom		
PRODUCT CHARACTERISTICS	Standards Testing			
	<b>Do you undertake trend analysis of microbiological results?</b>	No	<b>Is shelf life testing undertaken?</b>	No
CONFIGURATION	Case Configuration		Inner Pack Configuration	
	<b>Total Quantity of Inner Components in Outer Case</b>	1 Units		
	<b>Is the Outer Case Splittable?</b>	No		
PRODUCT WEIGHTS	Inner Component			
	<b>Variable Weight Consumer Item</b>	No		
	<b>Inner Component Weight</b>	1.36 kg		
	<b>Weight/Volume</b>			
	Net weight: 1.357kg			
	Outer Case			
	<b>Outer Case Gross Weight</b>	1.6 kg		
<b>Outer Case Net Weight</b>	1.36 kg			
PRODUCT DIMENSIONS	Inner Component			
	<b>Inner Component Depth</b>	292 mm		
	<b>Inner Component Width</b>	233 mm		
	<b>Inner Component Height</b>	83 mm		
	Outer Case			
	<b>Outer Case Depth</b>	292 mm		
	<b>Outer Case Width</b>	233 mm		
PALLET INFORMATION	<b>Quantity of Cases Per Pallet Layer</b>	17 Cases	<b>Pallet Height</b>	1.3 MTR
	<b>Quantity of Layers Per Pallet</b>	14 Layers	<b>Pallet Gross Weight</b>	411 kg
	<b>Quantity of Cases Per Pallet</b>	238 Cases		
OTHER INFORMATION	<b>Manufacturer Comments</b>	Outer case is also the each as products is sold per case. Occasionally it may be necessary to replace a biscuit with another of equally high quality. Nutrition based on KITKAT Milk per 100g. Waste packaging to be confirmed.		
CONTACT INFORMATION	Address	Nestle UK Nestlé UK Ltd Haxby Road York YO31 8TA1 England		
	P: (Phone)	0800 00 00 30		
	Complaints Contact	consumer.services@uk.nestle.com		
	P: (Phone)	0800 00 00 30		

The information on the [Erudus System](#) has been supplied by the manufacturers of the products and, whilst the owners of the Erudus System take steps to ensure the information is regularly updated, they give no warranty and no guarantee that the information is accurate. Product information and ingredients may change, please always read product labels carefully in addition to using the information provided by Erudus.

We do not accept liability for any inaccuracies or incorrect information contained on this site.  
Please visit <http://www.erudus.com/terms-and-conditions> for full terms and conditions.