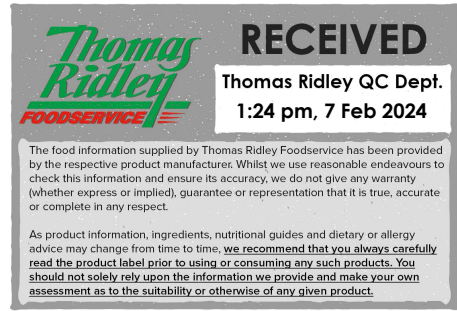


NielsenIQ Brandbank

KitKat White Chocolate Bar 41.5g



EAN

8445291036062

Target market(s)

GB, IE

Components

Ingredients

Sugar

Vegetable Fats (Palm, Shea Sal)

WHEAT Flour (contains Calcium, Iron, Thiamin and Niacin)

Skimmed **MILK** Powder

Whey Powder (**MILK**)

Glucose Syrup

Cocoa Mass

Emulsifier (Lecithins)

Natural Flavourings

Cocoa Butter

Dried Whole **MILK**

Yeast

Raising Agent (Sodium Bicarbonate)

Butterfat (**MILK**)

Whey Powder product (**MILK**)

Allergy Text

May contain **PEANUTS** and **TREE NUTS**.

Nutrition

	Per 100 g	Per bar	%RI*
Energy	2156kJ / 515kcal	895kJ / 214kcal	11%
Fat	25.9g	10.7g	15%
of which saturates	14.6g	6.1g	31%
Carbohydrate	62.9g	26.1g	10%
of which sugars	47.3g	19.6g	22%
Fibre	0.8g	0.4g	-
Protein	6.8g	2.8g	6%
Salt	0.24g	0.10g	2%

*Reference Intake of an average adult (8400kJ/2000kcal)

Contains 1 serving

Portions should be adjusted for children of different ages

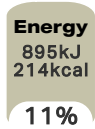
Calculated Nutrition

	per 100g	Per bar
Energy (kJ)	2156	895
Energy (kcal)	515	214
Fat (g)	25.9	10.7
of which saturates (g)	14.6	6.1
Carbohydrate (g)	62.9	26.1
of which sugars (g)	47.3	19.6
Fibre (g)	0.8	0.4
Protein (g)	6.8	2.8
Salt (g)	0.24	0.1

Front of Pack Nutrition

Per Portion

Per bar



Energy per 100g: 2156kJ/515kcal

Reference Intake of an average adult (8400kJ/2000kcal)

Nutrition Other Text

Contains 1 serving

Portions should be adjusted for children of different ages

Reference Intake Statement

Reference Intake Statement - Reference Intake of an average adult (8400kJ/2000kcal)

Product Description

Alternative Description

Supplier Preferred Product Name - Kit Kat 4 Finger White Chocolate Bar 41.5g

Brand

KitKat

Manufacturer Brand

Brand - Nestle

Features

A delicious white coated bar, made with 4 fingers of crispy wafer inside.

Ideal for a break at home or work

No artificial colours, flavours or preservatives

Suitable for vegetarians

Rainforest Alliance Certified cocoa

Standardised Brand

Brand - KitKat

Regulated Product Name

Four crisp wafer fingers covered with a white coating (66%).

Marketing

Company Name

Nestlé UK Ltd / Nestlé Ireland Ltd

Company Address

Nestlé UK Ltd,
PO Box 207,
York,
YO91 1WS.

Nestlé Ireland Ltd,
3009 Lake Drive,
Citywest,
Dublin,
D24 H6RR.

Third Party Logos

- Tidyman

Product Marketing

Unwrap, break off a finger, snap it in two and savour the crispy wafer finger covered in a deliciously smooth white coating. KITKAT was first launched in 1935 as 'Rowntree's Chocolate Crisp' and didn't acquire its name until two years later in 1937. Launched in York and still produced there today, KITKAT is a British classic. In 2016, KITKAT celebrated becoming the first 100% globally certified sustainably sourced brand! KITKAT supports improving the lives of cocoa farmers and quality of cocoa through the Nestle Cocoa Plan® and by working with the Rainforest Alliance. This means no matter where in the world you buy a KITKAT, you know that the cocoa used to make its delicious chocolate layer was responsibly sourced, find out more at www.rainforest-alliance.org

With its perfect chocolate to wafer ratio, KITKAT is the perfect companion for any break. You can enjoy KITKAT as the iconic KITKAT 4 Finger, KITKAT Chunky, KITKAT 2 Finger and the newest addition; KITKAT Bites. So, whoever you are and however you break, Have a break, have a KITKAT®

Brand Marketing

Why not mix up your break and try the KITKAT Vegan bar?

Other Information

® Reg. Trademark of Société des Produits Nestlé S.A.

Further Description

Join us at facebook.com/kitkatuk

Share your break with #MyBreak

Check out our YouTube Channel at www.youtube.com/user/kitkat

Visit www.kitkat.co.uk

Good to remember, enjoying chocolate as part of a varied, balanced diet and a healthy lifestyle, is one of life's little pleasures

Health & Lifestyle

Lifestyle

- Suitable for Vegetarians

Allergy Advice

Milk - Contains
Nuts - May Contain
Peanuts - May Contain
Wheat - Contains

Storage & Usage

Storage Type

Type

Ambient

Preparation and Usage

Know Your Serving
1 Bar = 1 Serving

Storage

Best before end
See under fin seal.
Storage cool and dry.

Date Marking Type

- Best Before

Brandbank Captured Pack Data

Pack Size

41.5g e

Numeric Size

Numeric Size - 41.5

Packaging Material Marks

Material Mark - 5 - PP

Pack Type

Type - Wrap

Recycling Scheme

- OPRL

Recycling Other Text

Dispose of responsibly
Recycle at Store - Don't recycle at home
For IE - Recycle at Home / Visit MYWASTE.IE

Customer Services

Manufacturers Address

Nestlé UK Ltd,
PO Box 207,
York,
YO91 1WS.

Nestlé Ireland Ltd,
3009 Lake Drive,
Citywest,
Dublin,
D24 H6RR.

Return To

Let's Talk
UK 0800 604 604
Nestlé UK Ltd,
PO Box 207,
York,
YO91 1WS.

IE 00800 6378 5385
Nestlé Ireland Ltd,
3009 Lake Drive,
Citywest,
Dublin,
D24 H6RR.
www.kitkat.com

Telephone Helpline

UK 0800 604 604
IE 00800 6378 5385

Web Address

www.kitkat.com

Extended Data

Description Breakdown

Functional Name - Chocolate Bar
Variant - White



