

Changed Sep 21, 2023 08:41

Erudus ID 5acff19f889a4d94a7aa5b7cb4811a2a

Version 1.0



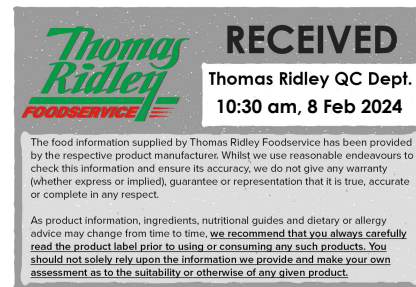
# Schweppes Slimline Tonic Water 150ml x24

Schweppes Slimline Tonic Water 24x0.16kg

## PRODUCT DESCRIPTION

Schweppes Slimline Tonic Water 150ml x24 Can

Brand	Coca-Cola
Manufacturer Product Code	252597
Product Type	Drink
Product Category	Drinks - General
Storage Type	Ambient
Erudus ID	5acff19f889a4d94a7aa5b7cb4811a2a
Specification Type	Legacy



Inner Component GTIN	50193622
Outer Case GTIN	5017726130626



## INGREDIENTS

### Ingredient Declaration

Carbonated Water, Acid (Citric Acid), Acidity Regulator (Sodium Citrates), Natural Flavourings Including Quinine, Sweetener (Aspartame).

## ALLERGENS

Product Contains:

Celery/Celeriac	No	Mustard	No
Cereals Containing Gluten	No	Nuts (Tree)	No
Barley	No	Almond nuts	No
Oats	No	Brazil nuts	No
Rye	No	Cashew nuts	No
Wheat (including Spelt and Khorasan)	No	Hazelnuts	No
Crustacea	No	Macadamia (Queensland) nuts	No
Eggs	No	Pecan nuts	No
Fish	No	Pistachio nuts	No
Lupin	No	Walnuts	No
Milk	No	Peanuts	No
Molluscs	No	Sesame Seeds	No
		Soybeans	No
		Sulphur Dioxide and Sulphites	No

## SUPPLEMENTARY INGREDIENT INFORMATION

Palm Oil	No
Hydrogenated Vegetable Oil/Fat	No
GM Protein/DNA	No

ADDITIVES

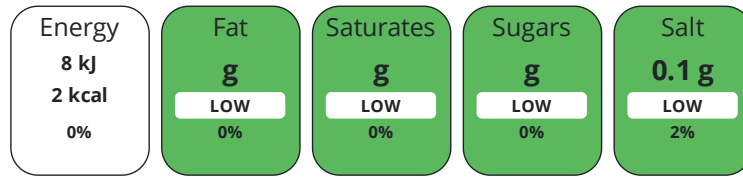
Product Contains:

<b>Artificial Antioxidants</b>	No	<b>Artificial Flavourings</b>	No
<b>Artificial Colours</b>	No	<b>Artificial Preservatives</b>	Yes
<b>Artificial Flavour Enhancers</b>	No	<b>Artificial Sweeteners</b>	Yes
<b>Suitable for Coeliacs</b>	Yes	<b>Halal Diet</b>	Suitable for
<b>Kosher Diet</b>	Suitable for	<b>Vegetarian Diet</b>	Suitable for
<b>Vegan Diet</b>	Suitable for		

DIET SUITABILITY

NUTRITIONAL INFORMATION

Each 100g/ml portion contains:



of your reference intake.

Typical values per 100g/ml : Energy 2kcal / 8kj

Nutrient	per 100g/ml	RI per 100g/ml
<b>Energy (kJ)</b>	8 kJ	0%
<b>Energy (kcal)</b>	2 kcal	0%
<b>Fat</b>	0 g	0%
<b>of which Saturates</b>	0 g	0%
<b>Carbohydrate</b>	0 g	0%
<b>of which Sugars</b>	0 g	0%
<b>Protein</b>	0 g	0%
<b>Salt</b>	0.1 g	2%

SUPPLEMENTARY NUTRITIONAL INFORMATION

HFSS (HIGH IN FAT, SALT AND SUGAR)

<b>HFSS Status</b>	No
--------------------	----

HANDLING & STORAGE INFORMATION

**Directions For Use**

Best served chilled.

**Storage Instructions**

Store in a cool dry place.

<b>Shelf Life from Time of Production</b>	180 Days
---	----------

ORIGIN

<b>Product Country of Origin/Place of Provenance</b>	Great Britain
--	---------------

PRODUCT CHARACTERISTICS CONFIGURATION

<b>Standards Testing</b>	
<b>Case Configuration</b>	Inner Pack Configuration
<b>Total Quantity of Inner Components in Outer Case</b>	24 Units
<b>Is the Outer Case Splittable?</b>	No

PRODUCT WEIGHTS

Inner Component	
<b>Variable Weight Consumer Item</b>	No
<b>Inner Component Weight</b>	0.16 kg
Outer Case	
<b>Outer Case Gross Weight</b>	4.14 kg
<b>Outer Case Net Weight</b>	3.6 kg

PRODUCT DIMENSIONS

Inner Component	
<b>Inner Component Depth</b>	54 mm
<b>Inner Component Width</b>	54 mm
<b>Inner Component Height</b>	89 mm
Outer Case	
<b>Outer Case Depth</b>	326 mm
<b>Outer Case Width</b>	219 mm
<b>Outer Case Height</b>	91 mm

PALLET INFORMATION

<b>Quantity of Cases Per Pallet Layer</b>	16 Cases	<b>Pallet Height</b>	1.52 MTR
<b>Quantity of Layers Per Pallet</b>	15 Layers	<b>Pallet Gross Weight</b>	1023.78 kg
<b>Quantity of Cases Per Pallet</b>	240 Cases		

PACKAGING

Inner Component Packaging						
Type	Materials	Weight	Recycled Plastic %	Recyclable	Returnable	Composite
Can	Aluminium	228 g	- %			
Outer Case Packaging						
Type	Materials	Weight	Recycled Plastic %	Recyclable	Returnable	Composite
Case	Plastic	15 g	- %			
Case	Paper/Cardboard	33.66 g	- %			

OTHER INFORMATION CONTACT INFORMATION

Address	Technical Contact
Coca-Cola	Data Queries
Coca-Cola Europacific Partners Great Britain Limited	npidataexchange@ccep.com
Pemberton House, Bakers Road	
Uxbridge	
UB8 1EZ	
United Kingdom	
<b>P. (Phone)</b> 08081000000	

The information on the [Erudus System](#) has been supplied by the manufacturers of the products and, whilst the owners of the Erudus System take steps to ensure the information is regularly updated, they give no warranty and no guarantee that the information is accurate. Product information and ingredients may change, please always read product labels carefully in addition to using the information provided by Erudus.

We do not accept liability for any inaccuracies or incorrect information contained on this site. Please visit <http://www.erudus.com/terms-and-conditions> for full terms and conditions.