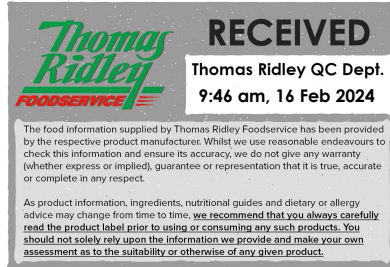


Changed Feb 16, 2024 09:16

Reviewed Feb 16, 2024 09:16

Erudus ID 045e7e5e3f5c4ee6b9f5f2ce524f80c3

Version 8.0



CRUMPET LOAF

Crumpet Loaf 6x6

PRODUCT DESCRIPTION

Frozen, fully baked loaf with an open crumb structure, to be used for toasting

Brand	Speciality Breads Ltd
Manufacturer Product Code	FB237
Manufacturer Version	3
Number	
Product Type	Food
Product Category	Bread - Other
Storage Type	Frozen
Erudus ID	045e7e5e3f5c4ee6b9f5f2ce524f80c3
Specification Type	Bakery Products

Outer Case GTIN 5032633152370



INGREDIENTS

Ingredient Declaration

Wheat Flour (Calcium Carbonate, Niacin, Iron, Thiamin), Water, Baking Powder (**Wheat** Flour, E575, E500(ii), E509), Yeast, Caster Sugar, **Wheat Gluten**, Salt.

ALLERGENS

Product Contains:

Celery/Celeriac	No	Mustard	No
Cereals Containing Gluten	Yes	Nuts (Tree)	No
Barley	May Contain	Almond nuts	No
Oats	No	Brazil nuts	No
Rye	May Contain	Cashew nuts	No
Wheat (including Spelt and Khorasan)	Yes	Hazelnuts	No
Crustacea	No	Macadamia (Queensland) nuts	No
Eggs	May Contain	Pecan nuts	No
Fish	No	Pistachio nuts	No
Lupin	No	Walnuts	No
Milk	May Contain	Peanuts	No
Molluscs	No	Sesame Seeds	No
		Soybeans	No
		Sulphur Dioxide and Sulphites	No

Risk Source:

SUPPLEMENTARY INGREDIENT INFORMATION

Palm Oil	No
Hydrogenated Vegetable Oil/Fat	No
GM Protein/DNA	No

ADDITIVES

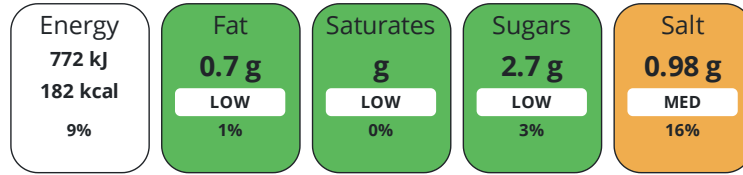
Product Contains:

Artificial Antioxidants	No	Artificial Flavourings	No
Artificial Colours	No	Artificial Preservatives	No
Artificial Flavour Enhancers	No	Artificial Sweeteners	No
Vegan Diet	Suitable for	Vegetarian Diet	Suitable for
Halal Diet	No	Kosher Diet	No

DIET
SUITABILITY

NUTRITIONAL
INFORMATION

Each 100g/ml portion contains:



of your reference intake.

Typical values per 100g/ml : Energy 182kcal / 772kJ

Nutrient	per 100g	RI per 100g
Energy (kJ)	772 kJ	9%
Energy (kcal)	182.3 kcal	9%
Fat	0.7 g	1%
of which Saturates	0 g	0%
of which Mono-unsaturates	0 g	
of which Polyunsaturates	0 g	
Carbohydrate	37.9 g	15%
of which Sugars	2.7 g	3%
of which Polyols	0 g	
of which Starch	0 g	
Fibre	1.7 g	
Protein	7 g	14%
Salt	0.98 g	16%
Sodium	0.39 mg	

VITAMINS AND
MINERALS

Nutrient	per 100g	RI per 100g
Vitamin C	0 mg	0%
Folate/Folic Acid	15.86 µg	8%
Calcium	139.06 mg	17%
Iron	0 mg	0%
Zinc	0 mg	0%

SUPPLEMENTARY
NUTRITIONAL
INFORMATION

Cholesterol per 100 g/ml (UK/FR)	0 g
Trans Fats per 100 g/ml	0 g

HFSS (HIGH IN
FAT, SALT AND
SUGAR)

HFSS Status	No
--------------------	----

HANDLING & STORAGE INFORMATION

Directions For Use

FULLY BAKED. DEFROST INSIDE FOOD-SAFE PLASTIC BAG AT ROOM TEMPERATURE UNTIL COMPLETELY THAWED.

Storage Instructions

FROZEN. STORE AT -18°C

Shelf Life from Time of Production	365 Days	Exempt From Shelf Life Labelling	No
---	----------	---	----

ACCREDITATIONS/ CERTIFICATIONS/ ASSURANCE SCHEMES



ORIGIN	Product Country of Origin/Place of Provenance	United Kingdom
---------------	--	----------------

PRODUCT CHARACTERISTICS	Standards Testing		
	Do you undertake trend analysis of microbiological results?	Yes	Is shelf life testing undertaken? Yes

CONFIGURATION	Case Configuration		Inner Pack Configuration
	Variable Inner Components in Outer Case	No	Count per Inner Component 6
	Total Quantity of Inner Components in Outer Case	6 Units	
	Is the Outer Case Splittable?	No	

PRODUCT WEIGHTS	Inner Component		
	Variable Weight Consumer Item	No	
	Outer Case		
	Outer Case Gross Weight	4.09 kg	
	Outer Case Net Weight	0.25 kg	

PRODUCT DIMENSIONS	Inner Component		
	Inner Component Depth	230 mm	
	Inner Component Width	300 mm	
	Inner Component Height	232 mm	
	Outer Case		
	Outer Case Depth	233 mm	
	Outer Case Width	303 mm	
	Outer Case Height	239 mm	

PALLET INFORMATION	Quantity of Cases Per Pallet Layer	16 Cases	Pallet Height	1.85 MTR
	Quantity of Layers Per Pallet	7 Layers		
	Quantity of Cases Per Pallet	112 Cases		

PACKAGING	Inner Component Packaging						
	Type	Materials	Weight	Recycled Plastic %	Recyclable	Returnable	Composite
	Bag	Plastic	17 g	- %			
	Outer Case Packaging						
Type	Materials	Weight	Recycled Plastic %	Recyclable	Returnable	Composite	
Case	Paper/Cardboard	389 g	- %				

Transport Packaging

Type	Materials	Weight	Recycled Plastic %	Recyclable	Returnable	Composite
Other	Plastic	525 g	- %		Yes	
Other	Paper/Cardboard	110 g	- %		Yes	

OTHER INFORMATION

Intrastat/Taric Code 1905

CONTACT INFORMATION

Address

Speciality Breads Ltd
 Unit J2 Channel Road
 Westwood Industrial Estate
 Margate
 Kent
 CT9 4JS
 England

P: (Phone) 01843 209442

The information on the [Erudus System](#) has been supplied by the manufacturers of the products and, whilst the owners of the Erudus System take steps to ensure the information is regularly updated, they give no warranty and no guarantee that the information is accurate. Product information and ingredients may change, please always read product labels carefully in addition to using the information provided by Erudus.

We do not accept liability for any inaccuracies or incorrect information contained on this site.
 Please visit <http://www.erudus.com/terms-and-conditions> for full terms and conditions.