

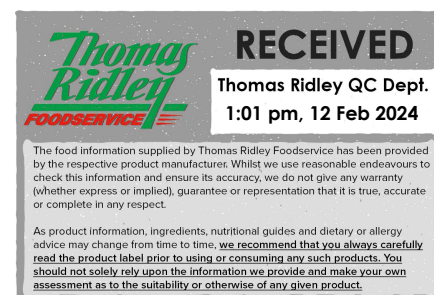
Blue Dragon Fine Egg Noodles 8x250g

Fine Egg Noodles 8x250g

PRODUCT DESCRIPTION

Dried, fine, wheat egg noodles.

| | |
|---------------------------|----------------------------------|
| Brand | AB World |
| Manufacturer Product Code | 220172 |
| Product Type | Food |
| Product Category | Pasta, Rice and Noodles |
| Storage Type | Ambient |
| Erudus ID | e19e49353a654dabbcc90ac8286c358f |
| Specification Type | Legacy |
| Inner Component GTIN | 5010338103774 |
| Outer Case GTIN | 05015612105819 |



INGREDIENTS

Ingredient Declaration

WHEAT Flour (**WHEAT** Flour with Calcium Carbonate, Iron, Niacin, Thiamin), Water, Pasteurised Free Range Whole **EGG** (5%), Salt, Paprika, Turmeric, Firming Agents (Potassium Carbonate, Sodium Carbonate), Acidity Regulator (Citric Acid).

ALLERGENS

Product Contains:

| | | | |
|---|-----|--------------------------------------|-------------|
| Celery/Celeriac | No | Mustard | No |
| Cereals Containing Gluten | Yes | Nuts (Tree) | May Contain |
| Barley | No | Almond nuts | May Contain |
| Oats | No | Brazil nuts | May Contain |
| Rye | No | Cashew nuts | May Contain |
| Wheat (including Spelt and Khorasan) | Yes | Hazelnuts | May Contain |
| Gluten content <20ppm | No | Macadamia (Queensland) nuts | May Contain |
| Crustacea | No | Pecan nuts | May Contain |
| Eggs | Yes | Pistachio nuts | May Contain |
| Fish | No | Walnuts | May Contain |
| Lupin | No | Peanuts | May Contain |
| Milk | No | Sesame Seeds | No |
| Molluscs | No | Soybeans | No |
| | | Sulphur Dioxide and Sulphites | No |

Risk Source:

Additional Allergen Information

For allergens, including cereals containing gluten, see ingredients in bold. May also contain peanuts and nuts.

SUPPLEMENTARY INGREDIENT INFORMATION

| | |
|---------------------------------------|----|
| Palm Oil | No |
| Hydrogenated Vegetable Oil/Fat | No |
| GM Protein/DNA | No |

ADDITIVES

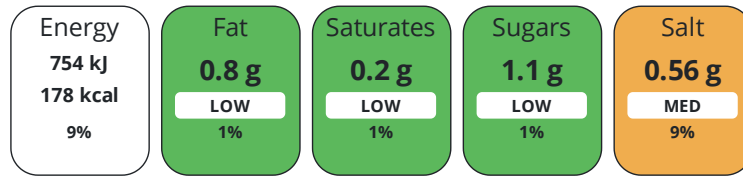
Product Contains:

| | | | |
|-------------------------------------|----|---------------------------------|--------------|
| Artificial Antioxidants | No | Artificial Flavourings | No |
| Artificial Colours | No | Artificial Preservatives | No |
| Artificial Flavour Enhancers | No | Artificial Sweeteners | No |
| Suitable for Coeliacs | No | Halal Diet | No |
| Kosher Diet | No | Vegetarian Diet | Suitable for |
| Vegan Diet | No | | |

DIET SUITABILITY

NUTRITIONAL INFORMATION

Each 100g/ml portion contains:



of your reference intake.

Typical values per 100g/ml : Energy 178kcal / 754kj

| Nutrient | per 100g/ml | RI per 100g/ml | per 183g/ml serving | RI per 183g/ml serving |
|---------------------------|-------------|----------------|---------------------|------------------------|
| Energy (kJ) | 754 kJ | 9% | 1379.8 kJ | 16% |
| Energy (kcal) | 178 kcal | 9% | 325.7 kcal | 16% |
| Fat | 0.8 g | 1% | 1.5 g | 2% |
| of which Saturates | 0.2 g | 1% | 0.4 g | 2% |
| Carbohydrate | 35 g | 13% | 64.1 g | 25% |
| of which Sugars | 1.1 g | 1% | 2 g | 2% |
| Fibre | 2.1 g | | 3.8 g | |
| Protein | 6.3 g | 13% | 11.5 g | 23% |
| Salt | 0.56 g | 9% | 1 g | 17% |
| Serving Size | 183 g | | | |

SUPPLEMENTARY NUTRITIONAL INFORMATION

HANDLING & STORAGE INFORMATION

Directions For Use

perfect for stir fries To cook your noodles: Bring a pan of water to the boil then remove from the heat, alternatively boil some water using a kettle then pour into a pan. Drop the noodle nests into the boiled water and soak for 4-5 minutes, stir frequently to separate noodles.

Storage Instructions

Store in a cool, dry place. Once opened, store in an airtight container.

Shelf Life from Time of Production 730 Days

ACCREDITATIONS/ CERTIFICATIONS/ ASSURANCE SCHEMES



ORIGIN

Product Country of Origin/Place of England

Provenance

Standards Testing

PRODUCT CHARACTERISTICS

| Do you undertake trend analysis of microbiological results? | Yes | Is shelf life testing undertaken? | Yes | | |
|--|-------------|--|--------|---------|------------------|
| Microbiological Standards | | | | | |
| Organism | Description | Frequency | Target | Maximum | Sample (g or ml) |
| Bacillus Cereus (cfu/g or ml) | | Annually | <20 | 20 | - |
| Clostridium Perfringens (cfu/g or ml) | | Annually | <10 | 10 | - |
| E. Coli (cfu/g or ml) | | Annually | <10 | 10 | - |
| Enterobacteriaceae (cfu/g or ml) | | Annually | <100 | 100 | - |
| Staphylococcus Aureus (cfu/g or ml) | | Annually | <20 | 20 | - |
| Total Viable Count (TVC) (cfu/g or ml) | | Annually | <1000 | 1000 | - |
| Salmonella (cfu/g or ml) | | Annually | =0 | 1 | - |
| Moulds (cfu/g or ml) | | Annually | <20 | 20 | - |

CONFIGURATION

Case Configuration Inner Pack Configuration

Total Quantity of Inner Components in Outer Case 8 Units

PRODUCT WEIGHTS

Inner Component
Variable Weight Consumer Item No
Inner Component Weight 250 g
 Outer Case
Outer Case Gross Weight 2.45 kg
Outer Case Net Weight 2 kg

PRODUCT DIMENSIONS

Inner Component
Inner Component Depth 177 mm
Inner Component Width 334 mm
Inner Component Height 195 mm
 Outer Case
Outer Case Depth 340 mm
Outer Case Width 183 mm
Outer Case Height 195 mm

PALLET INFORMATION

| | | | |
|---|-----------|----------------------------|-----------|
| Quantity of Cases Per Pallet Layer | 17 Cases | Pallet Height | 1.53 MTR |
| Quantity of Layers Per Pallet | 7 Layers | Pallet Gross Weight | 321.43 kg |
| Quantity of Cases Per Pallet | 119 Cases | | |

PACKAGING

| Inner Component Packaging | | | | | | |
|---------------------------|-----------------|--------|--------------------|------------|------------|-----------|
| Type | Materials | Weight | Recycled Plastic % | Recyclable | Returnable | Composite |
| Bag | Plastic | 3.11 g | 0.00 % | | | |
| Outer Case Packaging | | | | | | |
| Type | Materials | Weight | Recycled Plastic % | Recyclable | Returnable | Composite |
| Case | Paper/Cardboard | 176 g | - % | | | |

Transport Packaging

| Type | Materials | Weight | Recycled Plastic % | Recyclable | Returnable | Composite |
|-------|-----------|---------|--------------------|------------|------------|-----------|
| Other | Wood | 28000 g | - % | | | |

OTHER INFORMATION

Commodity Code 1902309090

CONTACT INFORMATION

Address

AB World
Kiriana House,
Kiribati Way,
Leigh,
Lancashire,
WN7 5RS
England

P: (Phone) 01942 267000

The information on the [Erudus System](#) has been supplied by the manufacturers of the products and, whilst the owners of the Erudus System take steps to ensure the information is regularly updated, they give no warranty and no guarantee that the information is accurate. Product information and ingredients may change, please always read product labels carefully in addition to using the information provided by Erudus.

We do not accept liability for any inaccuracies or incorrect information contained on this site.
Please visit <http://www.erudus.com/terms-and-conditions> for full terms and conditions.