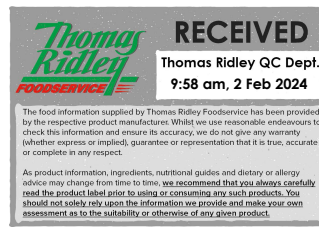


Changed Feb 02, 2024 09:37

Reviewed Feb 02, 2024 09:37

Erudus ID ecf532a320d2406d8768680618733b8a

Version 2.0



**Thomas Ridley**  
FOODSERVICE  
**RECEIVED**  
Thomas Ridley QC Dept.  
9:58 am, 2 Feb 2024

The food information supplied by Thomas Ridley Foodservice has been provided by the respective product manufacturer. Whilst we use reasonable endeavours to check this information and ensure its accuracy, we do not give any warranty (whether express or implied) guarantee or representation that it is true, accurate or complete in any respect.

As product information, ingredients, nutritional guides and dietary or allergy advice may change from time to time, we recommend that you always carefully read the product label prior to using or consuming any such products. You should not solely rely upon the information we provide and make your own assessment as to the suitability or otherwise of any given product.



# Freshers – No Added Sugar Blackcurrant Juice Drink

Concentrated No Added Sugar Blackcurrant Juice Drink With Sweeteners 2x5litre

## PRODUCT DESCRIPTION

Concentrated no added sugar blackcurrant juice drink with sweeteners

<b>Brand</b>	Aimia Foods Ltd
<b>Manufacturer Product Code</b>	F5NASBLK
<b>Product Type</b>	Drink
<b>Product Category</b>	Juices and Cordials
<b>Storage Type</b>	Ambient
<b>Erudus ID</b>	ecf532a320d2406d8768680618733b8a
<b>Specification Type</b>	Drinks



<b>Inner Component GTIN</b>	5060113913876
<b>Outer Case GTIN</b>	05060113913968



## INGREDIENTS

### Ingredient Declaration

Water, Blackcurrant Juice from Concentrate (5%), Acid (Citric Acid), Colour (Anthocyanin), Acidity Regulator (Sodium Citrate), Flavourings, Sweeteners (Sodium Saccharin, Acesulfame K, Aspartame\*), Preservatives (Sodium Benzoate, Sodium MetabiSULPHITE), Antioxidant (Ascorbic Acid).

### Ingredient Statements

\*Contains a source of Phenylalanine. Allergy Advice For allergens, see ingredients in CAPITALS.

## ALLERGENS

Product Contains:

<b>Celery/Celериac</b>	No	<b>Mustard</b>	No
<b>Cereals Containing Gluten</b>	No	<b>Nuts (Tree)</b>	No
<b>Barley</b>	No	<b>Almond nuts</b>	No
<b>Oats</b>	No	<b>Brazil nuts</b>	No
<b>Rye</b>	No	<b>Cashew nuts</b>	No
<b>Wheat (including Spelt and Khorasan)</b>	No	<b>Hazelnuts</b>	No
<b>Crustacea</b>	No	<b>Macadamia (Queensland) nuts</b>	No
<b>Eggs</b>	No	<b>Pecan nuts</b>	No
<b>Fish</b>	No	<b>Pistachio nuts</b>	No
<b>Lupin</b>	No	<b>Walnuts</b>	No
<b>Milk</b>	No	<b>Peanuts</b>	No
<b>Molluscs</b>	No	<b>Sesame Seeds</b>	No
		<b>Soybeans</b>	No
		<b>Sulphur Dioxide and Sulphites</b>	Yes

SUPPLEMENTARY  
INGREDIENT  
INFORMATION

<b>Palm Oil</b>	No
<b>Hydrogenated Vegetable Oil/Fat</b>	No
<b>GM Protein/DNA</b>	No

ADDITIVES

Product Contains:

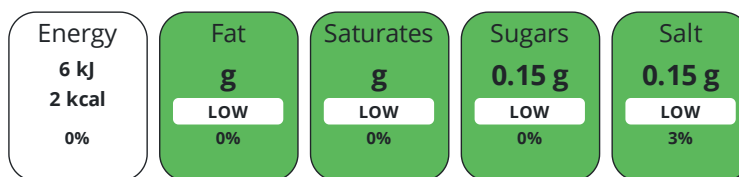
<b>Artificial Antioxidants</b>	No	<b>Artificial Preservatives</b>	Yes
<b>Artificial Colours</b>	No	<b>Artificial Sweeteners</b>	Yes
<b>Artificial Flavour Enhancers</b>	No		

DIET  
SUITABILITY

<b>Vegan Diet</b>	Suitable for	<b>Vegetarian Diet</b>	Suitable for
<b>Halal Diet</b>	No	<b>Kosher Diet</b>	No

NUTRITIONAL  
INFORMATION

Each 50g/ml serving contains:



of your reference intake.

Typical values per 50g/ml : Energy 2kcal / 6kJ

Nutrient	per 100ml	RI per 100ml	per 50ml serving	RI per 50ml serving
<b>Energy (kJ)</b>	11 kJ	0%	5.5 kJ	0%
<b>Energy (kcal)</b>	3 kcal	0%	1.5 kcal	0%
<b>Fat</b>	0 g	0%	-	
<b>of which Saturates</b>	0 g	0%	-	
<b>Carbohydrate</b>	0.5 g	0%	0.3 g	0%
<b>of which Sugars</b>	0.3 g	0%	0.2 g	0%
<b>Protein</b>	0.1 g	0%	0.1 g	0%
<b>Salt</b>	0.3 g	5%	0.2 g	3%
<b>Serving Size</b>	50 ml			
<b>Number of Servings</b>	100 Servings			

SUPPLEMENTARY  
NUTRITIONAL  
INFORMATION

HANDLING &  
STORAGE  
INFORMATION

**Directions For Use**

Dilute 1 (50ml) part concentrate to 4 parts water (200ml). For toddlers and young children dilute with extra water.

**Storage Instructions**

Store in a cool dry place away from direct sunlight.

<b>Shelf Life from Time of Production</b>	365 Days	<b>Exempt From Shelf Life Labelling</b>	No
---	----------	---	----

ACCREDITATIONS/  
CERTIFICATIONS/  
ASSURANCE  
SCHEMES



**Other Accreditation**

N/A

ORIGIN	<b>Product Country of Origin/Place of Provenance</b>	United Kingdom					
	<b>Additional Origin Details</b>	N/A					
	<b>Standards Testing</b>						
PRODUCT CHARACTERISTICS CONFIGURATION	<b>Case Configuration</b>	Inner Pack Configuration					
	<b>Total Quantity of Inner Components in Outer Case</b>	2 Units					
	<b>Is the Outer Case Splittable?</b>	Yes					
PRODUCT WEIGHTS	<b>Inner Component</b>						
	<b>Inner Component Volume</b>	5 litre					
	<b>e mark</b>	Yes					
PRODUCT DIMENSIONS	<b>Outer Case</b>						
	<b>Outer Case Gross Weight</b>	10.52 kg					
	<b>Outer Case Net Weight</b>	10.01 kg					
PRODUCT DIMENSIONS	<b>Inner Component</b>						
	<b>Inner Component Depth</b>	143 mm					
	<b>Inner Component Width</b>	143 mm					
PRODUCT DIMENSIONS	<b>Inner Component Height</b>	340 mm					
	<b>Outer Case</b>						
	<b>Outer Case Depth</b>	300 mm					
PRODUCT DIMENSIONS	<b>Outer Case Width</b>	150 mm					
	<b>Outer Case Height</b>	350 mm					
	<b>Quantity of Cases Per Pallet Layer</b>	24 Cases	<b>Pallet Height</b>	1.55 MTR			
PALLET INFORMATION	<b>Quantity of Layers Per Pallet</b>	4 Layers	<b>Pallet Gross Weight</b>	1000 kg			
	<b>Quantity of Cases Per Pallet</b>	96 Cases					
PACKAGING	<b>Inner Component Packaging</b>						
	<b>Type</b>	<b>Materials</b>	<b>Weight</b>	<b>Recycled Plastic %</b>	<b>Recyclable</b>	<b>Returnable</b>	<b>Composite</b>
	Bottle	Plastic / PET (Polyethylene Terethphalate)	90 g	- %			
	Lid	Plastic / HDPE (High Density Polyethylene)	4.6 g	- %			
	Other	Plastic / HDPE (High Density Polyethylene)	6.6 g	- %			
	Label	Paper/Cardboard / Paper	0.44 g	- %			
	<b>Outer Case Packaging</b>						
	<b>Type</b>	<b>Materials</b>	<b>Weight</b>	<b>Recycled Plastic %</b>	<b>Recyclable</b>	<b>Returnable</b>	<b>Composite</b>
	Case	Paper/Cardboard / Corrugated	221 g	- %			
	Label	Paper/Cardboard / Paper	1.7 g	- %			

Transport Packaging

Type	Materials	Weight	Recycled Plastic %	Recyclable	Returnable	Composite
Pallet	Wood	28000 g	- %		Yes	
Layer Card	Paper/Cardboard / Corrugated	1612 g	- %			
Pallet Wrap	Plastic	280 g	- %			

OTHER INFORMATION

**Intrastat/Taric Code** 0

**Manufacturer Comments**

N/A

CONTACT INFORMATION

Address

Aimia Foods Ltd  
 Penny Lane  
 Haydock  
 Merseyside  
 WA11 0QZ  
 England

Technical Contact

Sophie Wall  
 Head of Technical  
 sophie.wall@aimiafoods.com

P: (Phone) 01942272900

P: (Phone) 01942 272900

Complaints Contact

Helen Bulmer  
 Customer Services Manager  
 customer.services@aimiafoods.com

P: (Phone) 01942 408600

The information on the [Erudus System](#) has been supplied by the manufacturers of the products and, whilst the owners of the Erudus System take steps to ensure the information is regularly updated, they give no warranty and no guarantee that the information is accurate. Product information and ingredients may change, please always read product labels carefully in addition to using the information provided by Erudus.

We do not accept liability for any inaccuracies or incorrect information contained on this site. Please visit <http://www.erudus.com/terms-and-conditions> for full terms and conditions.