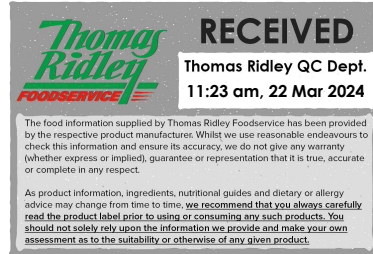


Changed Mar 22, 2024 10:24

Reviewed Mar 22, 2024 10:24

Erudus ID a1a2f67a6ff64725abcd4cc42ba94d3f

Version 5.0



12094

# TL SUCRALOSE STICKS 0.5G X 1000

TL Sucralose Sticks 0.5g X 1000 1000x0.5g

## PRODUCT DESCRIPTION

TL SUCRALOSE STICKS 0.5G X 1000 - Low energy, sucralose based table top sweetener in a powder form.

Brand	Tate & Lyle Sugars
Manufacturer Product Code	460426
Product Type	Food
Product Category	Sugar and Sweeteners
Storage Type	Ambient
Erudus ID	a1a2f67a6ff64725abcd4cc42ba94d3f
Specification Type	Generic

Outer Case GTIN 5010115802494



## INGREDIENTS

### Ingredient Declaration

Maltodextrin, Sucralose.

## ALLERGENS

Product Contains:

<b>Celery/Celeriac</b>	No	<b>Mustard</b>	No
<b>Cereals Containing Gluten</b>	No	<b>Nuts (Tree)</b>	No
<b>Barley</b>	No	<b>Almond nuts</b>	No
<b>Oats</b>	No	<b>Brazil nuts</b>	No
<b>Rye</b>	No	<b>Cashew nuts</b>	No
<b>Wheat (including Spelt and Khorasan)</b>	No	<b>Hazelnuts</b>	No
<b>Crustacea</b>	No	<b>Macadamia (Queensland) nuts</b>	No
<b>Eggs</b>	No	<b>Pecan nuts</b>	No
<b>Fish</b>	No	<b>Pistachio nuts</b>	No
<b>Lupin</b>	No	<b>Walnuts</b>	No
<b>Milk</b>	No	<b>Peanuts</b>	No
<b>Molluscs</b>	No	<b>Sesame Seeds</b>	No
		<b>Soybeans</b>	No
		<b>Sulphur Dioxide and Sulphites</b>	No

### Additional Allergen Information

Allergen Status: This product is Allergen free as defined by European Regulation (EU) 1169/2011 and European Commission Regulation (EC) 41/2009 (Gluten ≤ 20ppm).

## SUPPLEMENTARY INGREDIENT INFORMATION

<b>Palm Oil</b>	No
<b>Hydrogenated Vegetable Oil/Fat</b>	No
<b>GM Protein/DNA</b>	No

ADDITIVES

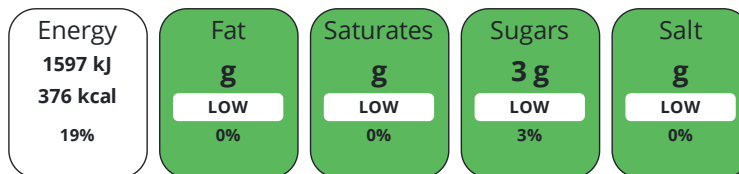
Product Contains:

<b>Artificial Antioxidants</b>	No	<b>Artificial Flavourings</b>	No
<b>Artificial Colours</b>	No	<b>Artificial Preservatives</b>	No
<b>Artificial Flavour Enhancers</b>	No	<b>Artificial Sweeteners</b>	Yes
<b>Vegan Diet</b>	Suitable for	<b>Vegetarian Diet</b>	Suitable for
<b>Halal Diet</b>	Suitable for	<b>Kosher Diet</b>	Suitable for

DIET  
SUITABILITY

NUTRITIONAL  
INFORMATION

Each 100g/ml portion contains:



of your reference intake.

Typical values per 100g/ml : Energy 376kcal / 1597kJ

Nutrient	per 100g	RI per 100g	per 0.5g serving	RI per 0.5g serving
<b>Energy (kJ)</b>	1597 kJ	19%	8 kJ	0%
<b>Energy (kcal)</b>	376 kcal	19%	1.9 kcal	0%
<b>Fat</b>	0 g	0%	-	
<b>of which Saturates</b>	0 g	0%	-	
<b>of which Mono-unsaturates</b>	0 g		-	
<b>of which Polyunsaturates</b>	0 g		-	
<b>Carbohydrate</b>	94.9 g	37%	0.5 g	0%
<b>of which Sugars</b>	3 g	3%	-	
<b>of which Polyols</b>	0 g		-	
<b>of which Starch</b>	0 g		-	
<b>Fibre</b>	0 g		-	
<b>Protein</b>	0 g	0%	-	
<b>Salt</b>	0 g	0%	-	
<b>Sodium</b>	0 mg		-	

**Serving Size** 0.5 g

**Source of Nutritional Information** Calculation from known/accepted datasets

**Trans Fats per 100 g/ml** 0 g

SUPPLEMENTARY  
NUTRITIONAL  
INFORMATION

HANDLING &  
STORAGE  
INFORMATION

**Directions For Use**

N/A

**Storage Instructions**

To be stored in dry, ambient conditions, avoiding extremes of temperature and humidity.

**Shelf Life from Time of Production** 730 Days **Exempt From Shelf Life Labelling** No

ACCREDITATIONS/  
CERTIFICATIONS/  
ASSURANCE  
SCHEMES

**BRCGS Certified**

ORIGIN	<b>Product Country of Origin/Place of Provenance</b> United Kingdom	
	<b>Additional Origin Details</b> The product manufactured in the UK using ingredients of non-UK origin.	
PRODUCT CHARACTERISTICS	Standards Testing	
	<b>Do you undertake trend analysis of microbiological results?</b>	No
	<b>Is shelf life testing undertaken?</b>	No
	<b>Commercially Sterile</b>	No
	Microbiological Standards	
	<b>Organism</b>	<b>Description</b>
	<b>Frequency</b>	<b>Target</b>
	<b>Maximum</b>	<b>Sample (g or ml)</b>
	E. Coli (cfu/g or ml)	not detected in 1g
	Total Viable Count (TVC) (cfu/g or ml)	Monthly
Salmonella (cfu/g or ml)	not detected in 1g	
Yeast (cfu/g or ml)	Monthly	
Moulds (cfu/g or ml)	Monthly	
ORGANOLEPTICS		
<b>Appearance</b>	Fine free flowing white sweetener powder.	
<b>Aroma</b>	Neutral smell with no off odours.	
<b>Taste</b>	Very sweet.	
<b>Texture</b>	A fine chalky texture quick dissolving on the tongue.	
HAZARD CONTROLS		
<b>Metal Detection</b>	Yes	
<b>Magnets</b>	Yes	
CONFIGURATION	<b>Sieving</b>	Yes
	Case Configuration	Inner Pack Configuration
	<b>Variable Inner Components in Outer Case</b>	No
	<b>Is Inner Pack Splittable?</b>	No
	<b>Total Quantity of Inner Components in Outer Case</b>	1000 Units
	<b>Count per Inner Component</b>	1
<b>Total Quantity of Inner Packs in Outer Case</b>	1000 Units	
<b>Case</b>		
<b>Is the Outer Case Splittable?</b>	No	
PRODUCT WEIGHTS	Inner Component	
	<b>Variable Weight Consumer Item</b>	No
	<b>Inner Component Weight</b>	0.5 g
	<b>e mark</b>	No
	Outer Case	
	<b>Outer Case Gross Weight</b>	0.86 kg
<b>Outer Case Net Weight</b>	0.5 kg	
PRODUCT DIMENSIONS	Inner Component	
	<b>Inner Component Depth</b>	0 mm
	<b>Inner Component Width</b>	0 mm
	<b>Inner Component Height</b>	0 mm
	Inner Pack	
	<b>Inner Pack Depth</b>	72.5 mm
	<b>Inner Pack Width</b>	15 mm
	Outer Case	
<b>Outer Case Depth</b>	285 mm	
<b>Outer Case Width</b>	190 mm	
<b>Outer Case Height</b>	112 mm	

PALLET INFORMATION

<b>Quantity of Cases Per Pallet Layer</b>	20 Cases	<b>Pallet Height</b>	1.4 MTR
<b>Quantity of Layers Per Pallet</b>	10 Layers	<b>Pallet Gross Weight</b>	130.2 kg
<b>Quantity of Cases Per Pallet</b>	200 Cases		

PACKAGING

Inner Component Packaging

Type	Materials	Weight	Recycled Plastic %	Recyclable	Returnable	Composite
Sachet	Paper/Cardboard / Paper	0.1 g	- %	No	No	Yes

Outer Case Packaging

Type	Materials	Weight	Recycled Plastic %	Recyclable	Returnable	Composite
Case	Paper/Cardboard / Corrugated	126 g	- %	Yes	No	Yes

Transport Packaging

Type	Materials	Weight	Recycled Plastic %	Recyclable	Returnable	Composite
Pallet	Wood	30000 g	- %	Yes	Yes	Yes

OTHER INFORMATION

**Manufacturer Comments**

N/A

CONTACT INFORMATION

Address

Tate & Lyle Sugars  
 Factory Road  
 Factory Road, Silvertown  
 Silvertown  
 E16 2EW  
 United Kingdom

Technical Contact

Carol Griffiths  
 European Quality Systems Manager  
 QualityDocs-EU@asr-group.com

P: (Phone) +44 758-307-3925

P: (Phone) +44 207-540-1512

The information on the [Erudus System](#) has been supplied by the manufacturers of the products and, whilst the owners of the Erudus System take steps to ensure the information is regularly updated, they give no warranty and no guarantee that the information is accurate. Product information and ingredients may change, please always read product labels carefully in addition to using the information provided by Erudus.

We do not accept liability for any inaccuracies or incorrect information contained on this site.  
 Please visit <http://www.erudus.com/terms-and-conditions> for full terms and conditions.