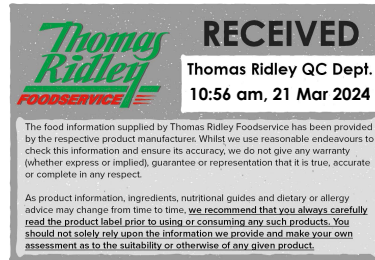


Changed Mar 21, 2024 09:52

Reviewed Mar 21, 2024 09:52

Erudus ID 1b09a69336144ec2b30320b92c034ecc

Version 2.0



12128

MSC Blanchbait 18 x 454g

Msc Blanchbait 18x454g

PRODUCT DESCRIPTION

18 x 454g bags of MSC Breaded Whitebait packed into a case. Product is sold by the case or individually by the bags

Brand	Smales Fish Merchants Ltd
Manufacturer Product Code	177950
Product Type	Food
Product Category	Fish - Breaded/Coated
Storage Type	Frozen
Erudus ID	1b09a69336144ec2b30320b92c034ecc
Specification Type	Fish and Seafood
Inner Component GTIN	0700381519039
Outer Case GTIN	0700381519022



INGREDIENTS

Ingredient Declaration

60% MSC Whitebait (*Sprattus sprattus*) (FISH), Breadcrumb (WHEAT flour, salt, yeast), Batter (water, WHEAT flour, potato starch, salt, modified potato starch).

ALLERGENS

Product Contains:

Celery/Celeriac	No	Mustard	No
Cereals Containing Gluten	Yes	Nuts (Tree)	No
Barley	No	Almond nuts	No
Oats	No	Brazil nuts	No
Rye	No	Cashew nuts	No
Wheat (including Spelt and Khorasan)	Yes	Hazelnuts	No
Crustacea	No	Macadamia (Queensland) nuts	No
Eggs	May Contain	Pecan nuts	No
Fish	Yes	Pistachio nuts	No
Lupin	No	Walnuts	No
Milk	May Contain	Peanuts	No
Molluscs	No	Sesame Seeds	No
		Soybeans	No
		Sulphur Dioxide and Sulphites	No

Risk Source:

Eggs (Risk Source)	Factory	Milk (Risk Source)	Factory
---------------------------	---------	---------------------------	---------

Allergen Statement On Pack

Contains: FISH, WHEAT

Additional Allergen Information

Contains: FISH, WHEAT

SUPPLEMENTARY
INGREDIENT
INFORMATION

Palm Oil	No
Hydrogenated Vegetable Oil/Fat	No
GM Protein/DNA	No

ADDITIVES

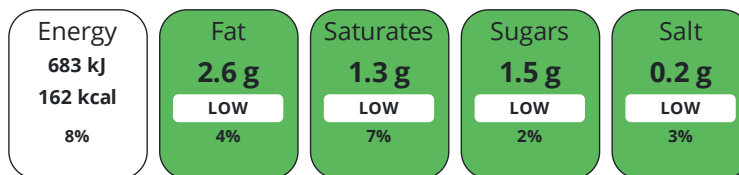
Product Contains:

Artificial Antioxidants	No	Artificial Flavourings	No
Artificial Colours	No	Artificial Preservatives	No
Artificial Flavour Enhancers	No	Artificial Sweeteners	No
Halal Diet	No	Kosher Diet	No

DIET
SUITABILITY

NUTRITIONAL
INFORMATION

Each 100g/ml portion contains:



of your reference intake.

Typical values per 100g/ml : Energy 162kcal / 683kJ

Nutrient	per 100g	RI per 100g
Energy (kJ)	683 kJ	8%
Energy (kcal)	162 kcal	8%
Fat	2.6 g	4%
of which Saturates	1.3 g	7%
Carbohydrate	23.6 g	9%
of which Sugars	1.5 g	2%
Fibre	1.1 g	
Protein	10.4 g	21%
Salt	0.2 g	3%
Sodium	79 mg	

SUPPLEMENTARY
NUTRITIONAL
INFORMATION

HANDLING &
STORAGE
INFORMATION

Directions For Use

For best results cook from frozen.

Storage Instructions

Store at or below -18oC

Shelf Life from Time of Production	548 Days	Exempt From Shelf Life Labelling	No
---	----------	---	----

ACCREDITATIONS/
CERTIFICATIONS/
ASSURANCE
SCHEMES
ORIGIN

Marine Stewardship Council (MSC)	SALSA (Safe & Local Supplier Approval)
---	---

Other Accreditation

Product Country of Origin/Place of	Latvia
---	--------

Provenance

Additional Origin Details

Trawl Caught in Baltic Sea FAO 27.IIId (Subareas 28.1 & 28.2) Packed in Kent UK

Fish Species	Whole Whitebait - Sprattus sprattus
---------------------	-------------------------------------

PRODUCT CHARACTERISTICS

Standards Testing

Do you undertake trend analysis of microbiological results? No

Is shelf life testing undertaken? No

Microbiological Standards

Organism	Description	Frequency	Target	Maximum	Sample (g or ml)
E. Coli (cfu/g or ml)		Occasionally	<20	100	25
Staphylococcus Aureus (cfu/g or ml)		Occasionally	<100	1000	25
Total Viable Count (TVC) (cfu/g or ml)		Occasionally	<100000	1000000	25
Enterobacteriaceae (cfu/g or ml)		Occasionally	<1000	10000	25
Salmonella (cfu/g or ml)		Occasionally	<0	0	25

Physical Standards

Test	Description	Frequency	Target	Range	Sample (g or ml)
Weight (g)	Bag check	Occasionally	<454	441 to 467	454

CONFIGURATION

Case Configuration

Inner Pack Configuration

Total Quantity of Inner Components in Outer Case 18 Units

Is the Outer Case Splittable? Yes

PRODUCT WEIGHTS

Inner Component

Variable Weight Consumer Item No

Inner Component Weight 454 g

Outer Case

Outer Case Gross Weight 8.2 kg

Outer Case Net Weight 8.2 kg

PRODUCT DIMENSIONS

Inner Component

Inner Component Depth 250 mm

Inner Component Width 0 mm

Inner Component Height 250 mm

Outer Case

Outer Case Depth 380 mm

Outer Case Width 245 mm

Outer Case Height 255 mm

PALLET INFORMATION

Quantity of Cases Per Pallet Layer 9 Cases

Pallet Height 1.8 MTR

Quantity of Layers Per Pallet 7 Layers

Pallet Gross Weight 577 kg

Quantity of Cases Per Pallet 63 Cases

PACKAGING

Inner Component Packaging

Type	Materials	Weight	Recycled Plastic %	Recyclable	Returnable	Composite
Bag	Plastic	12 g	- %	No		

Outer Case Packaging

Type	Materials	Weight	Recycled Plastic %	Recyclable	Returnable	Composite
Case	Paper/Cardboard	260 g	- %	Yes		

OTHER
INFORMATION

Manufacturer Comments

The minimum order quantity from Smales is one mixed pallet, as long as you order a full pallet you could just order one case.

Smales has BRCGS in Storage & Distribution MSC-C-50228

CONTACT
INFORMATION

Address

Smales Fish Merchants Ltd
30, West Dock Street
West Dock Street
Hull
HU3 4HL
England

P: (Phone) 01482 324997

Complaints Contact

Sally Johnson
Technical Manager
sally.johnson@smales.co.uk

P: (Phone) 01482 593696

Technical Contact

Sally Johnson
Technical Manager
sally.johnson@smales.co.uk

P: (Phone) 01482 593696

The information on the [Erudus System](#) has been supplied by the manufacturers of the products and, whilst the owners of the Erudus System take steps to ensure the information is regularly updated, they give no warranty and no guarantee that the information is accurate. Product information and ingredients may change, please always read product labels carefully in addition to using the information provided by Erudus.

We do not accept liability for any inaccuracies or incorrect information contained on this site.
Please visit <http://www.erudus.com/terms-and-conditions> for full terms and conditions.