

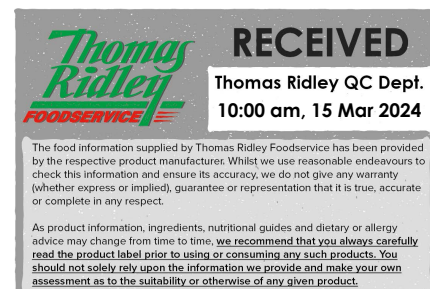
# Plain Pizza Bases 15"x9"(510g) (1 x 9)

Plain Pizza Bases 15"x9"(510g) (1 X 9)

## PRODUCT DESCRIPTION

Soft and fluffy rectangular pizza base made with wheat flour. (1 x 9)

<b>Brand</b>	Central Foods Group Ltd
<b>Manufacturer Product Code</b>	KBLF526C
<b>Product Type</b>	Food
<b>Product Category</b>	Bakery - General
<b>Storage Type</b>	Frozen
<b>Erudus ID</b>	f5085b8452ee4c41838cb2d47e736a77
<b>Specification Type</b>	Legacy
<b>Outer Case GTIN</b>	05060062474183



## INGREDIENTS

### Ingredient Declaration

Fortified **WHEAT** Flour (Calcium Carbonate, Niacin, Iron, Thiamin), Water, Yeast, Pre-Mix (**WHEAT** Flour, Dextrose, Flax Flour, Carrot Fibre, Flour Treatment Agent (Ascorbic Acid)), Salt.

## ALLERGENS

Product Contains:

<b>Celery/Celериac</b>	No	<b>Mustard</b>	No
<b>Cereals Containing Gluten</b>	Yes	<b>Nuts (Tree)</b>	No
<b>Barley</b>	No	<b>Almond nuts</b>	No
<b>Oats</b>	No	<b>Brazil nuts</b>	No
<b>Rye</b>	No	<b>Cashew nuts</b>	No
<b>Wheat (including Spelt and Khorasan)</b>	Yes	<b>Hazelnuts</b>	No
<b>Gluten content &lt;20ppm</b>	No	<b>Macadamia (Queensland) nuts</b>	No
<b>Crustacea</b>	No	<b>Pecan nuts</b>	No
<b>Eggs</b>	No	<b>Pistachio nuts</b>	No
<b>Fish</b>	No	<b>Walnuts</b>	No
<b>Lupin</b>	No	<b>Peanuts</b>	No
<b>Milk</b>	No	<b>Sesame Seeds</b>	No
<b>Molluscs</b>	No	<b>Soybeans</b>	No
		<b>Sulphur Dioxide and Sulphites</b>	No

### Additional Allergen Information

For allergens, including cereals containing gluten, see ingredients in CAPITALS.

## SUPPLEMENTARY INGREDIENT INFORMATION

<b>Palm Oil</b>	No
<b>Hydrogenated Vegetable Oil/Fat</b>	No
<b>GM Protein/DNA</b>	No

## ADDITIVES

Product Contains:

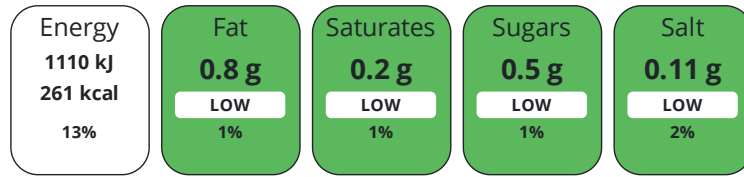
<b>Artificial Colours</b>	No	<b>Artificial Flavourings</b>	No
<b>Artificial Flavour Enhancers</b>	No	<b>Artificial Preservatives</b>	No
		<b>Artificial Sweeteners</b>	No

DIET  
SUITABILITY

<b>Suitable for Coeliacs</b>	No	<b>Halal Diet</b>	No
<b>Kosher Diet</b>	No	<b>Vegetarian Diet</b>	Suitable for
<b>Vegan Diet</b>	Suitable for		

NUTRITIONAL  
INFORMATION

Each 100g/ml portion contains:



of your reference intake.

Typical values per 100g/ml : Energy 261kcal / 1110kJ

Nutrient	per 100g/ml	RI per 100g/ml
<b>Energy (kJ)</b>	1110 kJ	13%
<b>Energy (kcal)</b>	261 kcal	13%
<b>Fat</b>	0.8 g	1%
<b>of which Saturates</b>	0.2 g	1%
<b>Carbohydrate</b>	54.5 g	21%
<b>of which Sugars</b>	< 0.5 g	1%
<b>Fibre</b>	2.3 g	
<b>Protein</b>	7.9 g	16%
<b>Salt</b>	0.11 g	2%
<b>Sodium</b>	45 mg	

**Serving Size** 0 g

SUPPLEMENTARY  
NUTRITIONAL  
INFORMATION

HFSS (HIGH IN  
FAT, SALT AND  
SUGAR)

**HFSS Status** No

HANDLING &  
STORAGE  
INFORMATION

**Directions For Use**

From Frozen unless otherwise stated Oven: For best results, preheat baking tray in an oven set at 180°C / 160°C (fan) / Gas Mark 4. Top pizza base as required, place on the preheated baking tray and bake for 16-18 mins. Ensure pizza is piping hot throughout before serving. Do not reheat. All appliances vary, these are guidelines only. To maintain vegan integrity, please ensure all equipment used for vegan preparation/cooking/serving is clean or dedicated for vegan use only.

**Storage Instructions**

Keep Frozen. Store at -18°C or below

**Shelf Life from Time of Production** 274 Days

ACCREDITATIONS/  
CERTIFICATIONS/  
ASSURANCE  
SCHEMES



ORIGIN

**Product Country of Origin/Place of** United Kingdom

**Provenance**

**Additional Origin Details**

United Kingdom

PRODUCT CHARACTERISTICS CONFIGURATION

Standards Testing

Case Configuration

Inner Pack Configuration

**Total Quantity of Inner Components in Outer Case** 1 Units

**Is the Outer Case Splittable?**

No

PRODUCT WEIGHTS

Inner Component

**Variable Weight Consumer Item** No

**Weight/Volume**

9/4.59kg

Outer Case

**Outer Case Gross Weight** 4.78 kg

**Outer Case Net Weight** 4.59 kg

PRODUCT DIMENSIONS

Inner Component

**Inner Component Depth** 0 mm

**Inner Component Width** 0 mm

**Inner Component Height** 0 mm

Outer Case

**Outer Case Depth** 396 mm

**Outer Case Width** 246 mm

**Outer Case Height** 142 mm

PALLET INFORMATION

**Quantity of Cases Per Pallet Layer** 12 Cases

**Pallet Height** 1.71 MTR

**Quantity of Layers Per Pallet** 11 Layers

**Pallet Gross Weight** 645.96 kg

**Quantity of Cases Per Pallet** 132 Cases

PACKAGING

Inner Component Packaging

Type	Materials	Weight	Recycled Plastic %	Recyclable	Returnable	Composite
Bag	Plastic	11 g	0.00 %			
Bag	Paper/Cardboard	181 g	- %			

Transport Packaging

Type	Materials	Weight	Recycled Plastic %	Recyclable	Returnable	Composite
Other	Plastic	280 g	0.00 %		Yes	

OTHER INFORMATION

CONTACT  
INFORMATION

Address

Central Foods Group Ltd  
Maple Court  
Ash Lane, Collingtree  
Collingtree  
Northants  
NN4 0NB  
England

P: (Phone) 01604 858 522

Complaints Contact

Karen Wright  
Customer Care Admin Assistant  
kwright@centralfoods.co.uk

P: (Phone) 01604 878 299

Technical Contact

Chris Stobart  
Technical Manager  
technical@centralfoods.co.uk

P: (Phone) 01604 878 276

Commercial Contact

Oliver Sampson  
Commercial Manager  
osampson@centralfoods.co.uk

P: (Phone) 07715 073 273

The information on the [Erudus System](#) has been supplied by the manufacturers of the products and, whilst the owners of the Erudus System take steps to ensure the information is regularly updated, they give no warranty and no guarantee that the information is accurate. Product information and ingredients may change, please always read product labels carefully in addition to using the information provided by Erudus.

We do not accept liability for any inaccuracies or incorrect information contained on this site.  
Please visit <http://www.erudus.com/terms-and-conditions> for full terms and conditions.