

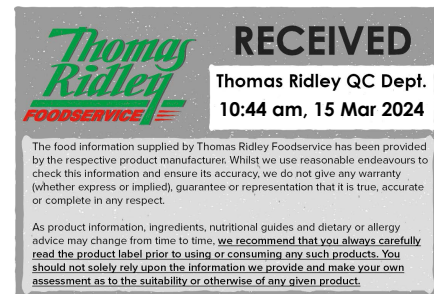
Plain Pizza Bases 9" (140g) (1 x 30)

Plain Pizza Bases 9" (140g) (1 X 30)

PRODUCT DESCRIPTION

Thin and crispy pizza base made with wheat flour. (1 x 30)

| | |
|----------------------------------|----------------------------------|
| Brand | Central Foods Group Ltd |
| Manufacturer Product Code | KB20814 |
| Product Type | Food |
| Product Category | Bakery - General |
| Storage Type | Frozen |
| Erudus ID | 620caac8b1744a43b101192a4a529f96 |
| Specification Type | Legacy |



Outer Case GTIN 05060062474145



INGREDIENTS

Ingredient Declaration

Fortified **WHEAT** Flour (Calcium Carbonate, Niacin, Iron, Thiamin), Water, Yeast, Pre-Mix (**WHEAT** Flour, Dextrose, Flax Flour, Carrot Fibre, Flour Treatment Agent (Ascorbic Acid)), Salt.

ALLERGENS

Product Contains:

| | | | |
|---|-----|--------------------------------------|----|
| Celery/Celeriac | No | Mustard | No |
| Cereals Containing Gluten | Yes | Nuts (Tree) | No |
| Barley | No | Almond nuts | No |
| Oats | No | Brazil nuts | No |
| Rye | No | Cashew nuts | No |
| Wheat (including Spelt and Khorasan) | Yes | Hazelnuts | No |
| Gluten content <20ppm | No | Macadamia (Queensland) nuts | No |
| Crustacea | No | Pecan nuts | No |
| Eggs | No | Pistachio nuts | No |
| Fish | No | Walnuts | No |
| Lupin | No | Peanuts | No |
| Milk | No | Sesame Seeds | No |
| Molluscs | No | Soybeans | No |
| | | Sulphur Dioxide and Sulphites | No |

Additional Allergen Information

For allergens, including cereals containing gluten, see ingredients in CAPITALS.

SUPPLEMENTARY INGREDIENT INFORMATION

| | |
|---------------------------------------|----|
| Palm Oil | No |
| Hydrogenated Vegetable Oil/Fat | No |
| GM Protein/DNA | No |

ADDITIVES

Product Contains:

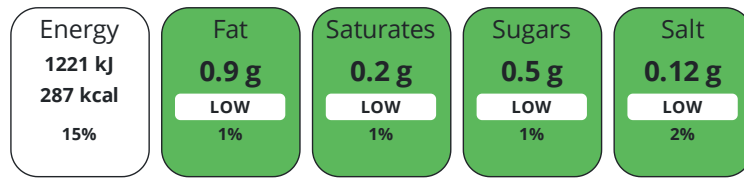
| | | | |
|-------------------------------------|----|---------------------------------|----|
| Artificial Antioxidants | No | Artificial Flavourings | No |
| Artificial Colours | No | Artificial Preservatives | No |
| Artificial Flavour Enhancers | No | Artificial Sweeteners | No |

DIET
SUITABILITY

| | | | |
|------------------------------|--------------|------------------------|--------------|
| Suitable for Coeliacs | No | Halal Diet | No |
| Kosher Diet | No | Vegetarian Diet | Suitable for |
| Vegan Diet | Suitable for | | |

NUTRITIONAL
INFORMATION

Each 100g/ml portion contains:



of your reference intake.

Typical values per 100g/ml : Energy 287kcal / 1221kJ

| Nutrient | per 100g/ml | RI per 100g/ml |
|----------------------|-------------|----------------|
| Energy (kJ) | 1221 kJ | 15% |
| Energy (kcal) | 287 kcal | 14% |
| Fat | 0.9 g | 1% |
| of which Saturates | 0.2 g | 1% |
| Carbohydrate | 59.9 g | 23% |
| of which Sugars | < 0.5 g | 1% |
| Fibre | 2.6 g | |
| Protein | 8.7 g | 17% |
| Salt | 0.12 g | 2% |
| Sodium | 46 mg | |

Serving Size 0 g

SUPPLEMENTARY
NUTRITIONAL
INFORMATION

HFSS (HIGH IN
FAT, SALT AND
SUGAR)

HFSS Status No

HANDLING &
STORAGE
INFORMATION

Directions For Use

From Frozen unless otherwise stated Oven: For best results, preheat baking tray in an oven set at 200°C / 180°C (fan) / Gas Mark 6. Top pizza base as required, place on the preheated baking tray and bake for 8-10 mins. Ensure pizza is piping hot throughout before serving. Do not reheat. All appliances vary, these are guidelines only. To maintain vegan integrity, please ensure all equipment used for vegan preparation/cooking/serving is clean or dedicated for vegan use only.

Storage Instructions

Keep Frozen. Store at -18°C or below

Shelf Life from Time of Production 274 Days

ACCREDITATIONS/
CERTIFICATIONS/
ASSURANCE
SCHEMES



ORIGIN

Product Country of Origin/Place of United Kingdom

Provenance

Additional Origin Details

United Kingdom

PRODUCT CHARACTERISTICS CONFIGURATION

Standards Testing

Case Configuration

Inner Pack Configuration

Total Quantity of Inner Components in Outer Case 1 Units

Is the Outer Case Splittable?

No

PRODUCT WEIGHTS

Inner Component

Variable Weight Consumer Item No

Weight/Volume

5/700g

Outer Case

Outer Case Gross Weight 4.54 kg

Outer Case Net Weight 4.2 kg

PRODUCT DIMENSIONS

Inner Component

Inner Component Depth 0 mm

Inner Component Width 0 mm

Inner Component Height 0 mm

Outer Case

Outer Case Depth 500 mm

Outer Case Width 253 mm

Outer Case Height 162 mm

PALLET INFORMATION

Quantity of Cases Per Pallet Layer 8 Cases

Pallet Height 1.77 MTR

Quantity of Layers Per Pallet 10 Layers

Pallet Gross Weight 378.2 kg

Quantity of Cases Per Pallet 80 Cases

PACKAGING

Inner Component Packaging

| Type | Materials | Weight | Recycled Plastic % | Recyclable | Returnable | Composite |
|------|-----------------|--------|--------------------|------------|------------|-----------|
| Bag | Plastic | 66 g | 0.00 % | | | |
| Bag | Paper/Cardboard | 269 g | - % | | | |

Transport Packaging

| Type | Materials | Weight | Recycled Plastic % | Recyclable | Returnable | Composite |
|-------|-----------|--------|--------------------|------------|------------|-----------|
| Other | Plastic | 280 g | 0.00 % | | Yes | |

OTHER INFORMATION

CONTACT
INFORMATION

Address

Central Foods Group Ltd
Maple Court
Ash Lane, Collingtree
Collingtree
Northants
NN4 0NB
England

P: (Phone) 01604 858 522

Complaints Contact

Karen Wright
Customer Care Admin Assistant
kwright@centralfoods.co.uk

P: (Phone) 01604 878 299

Technical Contact

Chris Stobart
Technical Manager
technical@centralfoods.co.uk

P: (Phone) 01604 878 276

Commercial Contact

Oliver Sampson
Commercial Manager
osampson@centralfoods.co.uk

P: (Phone) 07715 073 273

The information on the [Erudus System](#) has been supplied by the manufacturers of the products and, whilst the owners of the Erudus System take steps to ensure the information is regularly updated, they give no warranty and no guarantee that the information is accurate. Product information and ingredients may change, please always read product labels carefully in addition to using the information provided by Erudus.

We do not accept liability for any inaccuracies or incorrect information contained on this site.
Please visit <http://www.erudus.com/terms-and-conditions> for full terms and conditions.