

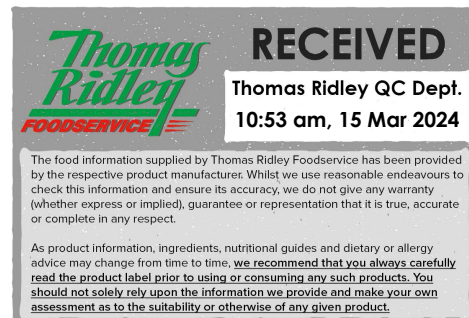
Plain Pizza Bases 12" (230g) (1 x 16)

Plain Pizza Bases 12" (230g) (1 X 16)

PRODUCT DESCRIPTION

Soft and fluffy pizza base made with wheat flour. (1 x 16)

Brand	Central Foods Group Ltd
Manufacturer Product Code	KB20828
Product Type	Food
Product Category	Bakery - General
Storage Type	Frozen
Erudus ID	76f0c890c35a4eb8b93d6b9dc2d68adc
Specification Type	Legacy
Outer Case GTIN	05060062474152



INGREDIENTS

Ingredient Declaration

Fortified **WHEAT** Flour (Calcium Carbonate, Niacin, Iron, Thiamin), Water, Yeast, Pre-Mix (**WHEAT** Flour, Dextrose, Flax Flour, Carrot Fibre, Flour Treatment Agent (Ascorbic Acid)), Salt.

ALLERGENS

Product Contains:

Celery/Celериac	No	Mustard	No
Cereals Containing Gluten	Yes	Nuts (Tree)	No
Barley	No	Almond nuts	No
Oats	No	Brazil nuts	No
Rye	No	Cashew nuts	No
Wheat (including Spelt and Khorasan)	Yes	Hazelnuts	No
Gluten content <20ppm	No	Macadamia (Queensland) nuts	No
Crustacea	No	Pecan nuts	No
Eggs	No	Pistachio nuts	No
Fish	No	Walnuts	No
Lupin	No	Peanuts	No
Milk	No	Sesame Seeds	No
Molluscs	No	Soybeans	No
		Sulphur Dioxide and Sulphites	No

Additional Allergen Information

For allergens, including cereals containing gluten, see ingredients in CAPITALS.

SUPPLEMENTARY INGREDIENT INFORMATION

Palm Oil	No
Hydrogenated Vegetable Oil/Fat	No
GM Protein/DNA	No

ADDITIVES

Product Contains:

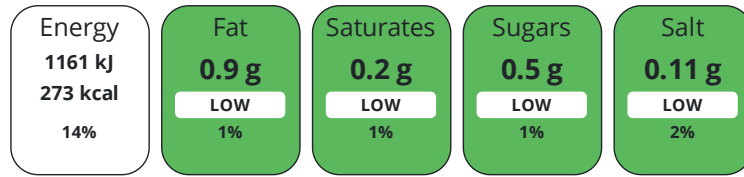
Artificial Colours	No	Artificial Flavourings	No
Artificial Flavour Enhancers	No	Artificial Preservatives	No
		Artificial Sweeteners	No

DIET
SUITABILITY

Suitable for Coeliacs	No	Halal Diet	No
Kosher Diet	No	Vegetarian Diet	Suitable for
Vegan Diet	Suitable for		

NUTRITIONAL
INFORMATION

Each 100g/ml portion contains:



of your reference intake.

Typical values per 100g/ml : Energy 273kcal / 1161kJ

Nutrient	per 100g/ml	RI per 100g/ml
Energy (kJ)	1161 kJ	14%
Energy (kcal)	273 kcal	14%
Fat	0.9 g	1%
of which Saturates	0.2 g	1%
Carbohydrate	57 g	22%
of which Sugars	< 0.5 g	1%
Fibre	2.5 g	
Protein	8.3 g	17%
Salt	0.11 g	2%
Sodium	44 mg	

Serving Size 0 g

SUPPLEMENTARY
NUTRITIONAL
INFORMATION

HFSS (HIGH IN
FAT, SALT AND
SUGAR)

HFSS Status No

HANDLING &
STORAGE
INFORMATION

Directions For Use

From Frozen unless otherwise stated Oven: For best results, preheat baking tray in an oven set at 200°C / 180°C (fan) / Gas Mark 6. Top pizza base as required, place on the preheated baking tray and bake for 10-12 mins. Ensure pizza is piping hot throughout before serving. Do not reheat. All appliances vary, these are guidelines only. To maintain vegan integrity, please ensure all equipment used for vegan preparation/cooking/serving is clean or dedicated for vegan use only.

Storage Instructions

Keep Frozen. Store at -18°C or below

Shelf Life from Time of Production 274 Days

ACCREDITATIONS/
CERTIFICATIONS/
ASSURANCE
SCHEMES



ORIGIN

Product Country of Origin/Place of United Kingdom

Provenance

Additional Origin Details

United Kingdom

PRODUCT CHARACTERISTICS CONFIGURATION

Standards Testing

Case Configuration

Inner Pack Configuration

Total Quantity of Inner Components in Outer Case 1 Units

Is the Outer Case Splittable?

No

PRODUCT WEIGHTS

Inner Component

Variable Weight Consumer Item No

Weight/Volume

8/1.84kg

Outer Case

Outer Case Gross Weight 3.99 kg

Outer Case Net Weight 3.68 kg

PRODUCT DIMENSIONS

Inner Component

Inner Component Depth 0 mm

Inner Component Width 0 mm

Inner Component Height 0 mm

Outer Case

Outer Case Depth 333 mm

Outer Case Width 333 mm

Outer Case Height 162 mm

PALLET INFORMATION

Quantity of Cases Per Pallet Layer 9 Cases

Pallet Height 1.77 MTR

Quantity of Layers Per Pallet 10 Layers

Pallet Gross Weight 374.1 kg

Quantity of Cases Per Pallet 90 Cases

PACKAGING

Inner Component Packaging

Type	Materials	Weight	Recycled Plastic %	Recyclable	Returnable	Composite
Bag	Plastic	22 g	0.00 %			
Bag	Paper/Cardboard	285 g	- %			

Transport Packaging

Type	Materials	Weight	Recycled Plastic %	Recyclable	Returnable	Composite
Other	Plastic	280 g	0.00 %		Yes	

OTHER INFORMATION

CONTACT
INFORMATION

Address

Central Foods Group Ltd
Maple Court
Ash Lane, Collingtree
Collingtree
Northants
NN4 0NB
England

P. (Phone) 01604 858 522

Complaints Contact

Karen Wright
Customer Care Admin Assistant
kwright@centralfoods.co.uk

P. (Phone) 01604 878 299

Technical Contact

Chris Stobart
Technical Manager
technical@centralfoods.co.uk

P. (Phone) 01604 878 276

Commercial Contact

Oliver Sampson
Commercial Manager
osampson@centralfoods.co.uk

P. (Phone) 07715 073 273

The information on the [Erudus System](#) has been supplied by the manufacturers of the products and, whilst the owners of the Erudus System take steps to ensure the information is regularly updated, they give no warranty and no guarantee that the information is accurate. Product information and ingredients may change, please always read product labels carefully in addition to using the information provided by Erudus.

We do not accept liability for any inaccuracies or incorrect information contained on this site.
Please visit <http://www.erudus.com/terms-and-conditions> for full terms and conditions.