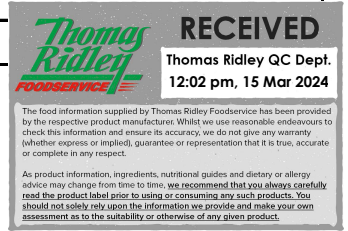


Taylor's of Harrogate Finished Product Specification

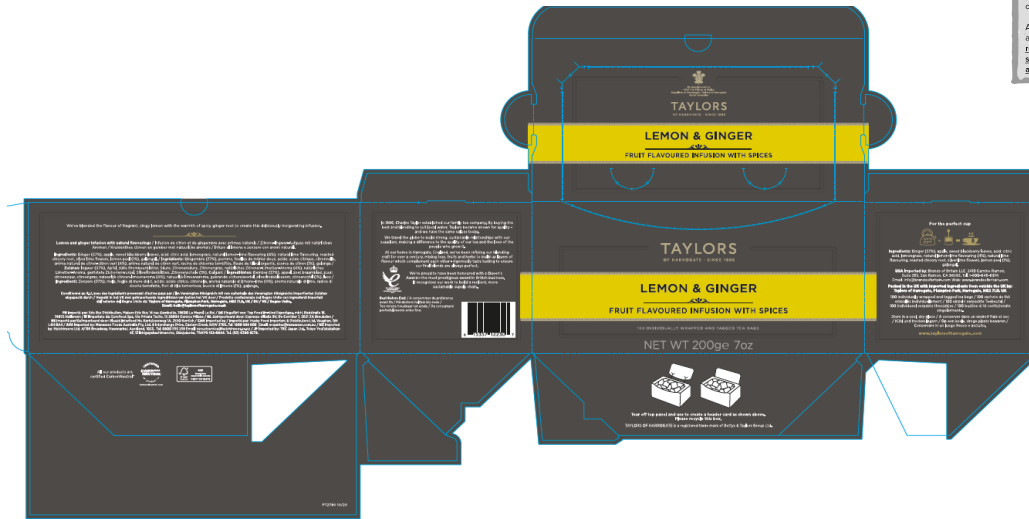
Legal Product Name	Lemon & Ginger Infusion Tea	
Description of Product	Lemon & Ginger Infusion Tagged Tea bags	2307RW 1 X 100
Supplier Product Code	2307RW	
Average Contents	100 Tea bags	

Supplier/ Manufacturer Contact Details

Supplier Name	Taylor's of Harrogate	
Address	Pagoda House, Plumpton Park, Harrogate North Yorkshire, England, HG2 7LD	
Telephone	01423 814000	
Fax	01423 814001	



Finished Product



Country of Origin Stated

Blended in Germany, Sourced from Multiple origins

Product Legal Name

Lemon and Ginger Infusion with Natural Flavourings

Legal Ingredient Declaration

Ginger (37%), apple, sweet blackberry leaves, citric acid, lemongrass, natural lemon-lime flavouring (4%), natural lime flavouring, roasted chicory root, silver lime flowers, lemon peel (1%), galangal.

Product Certification

None held

No nutritional claims are made

Packed in the UK

Allergen Information

Allergens	Yes	No
Cereals containing gluten (wheat, rye,barley, oats, spelt, kamut or their hybridised strains)		X
Crustaceans (crab, lobster, crayfish, shrimp, prawn)		X
Eggs		X
Milk		X
Fish		X
Peanuts		X
Soyabeans		X
Tree nuts (almonds, hazelnuts, walnuts, cashew nuts, pecans, brazil, pistachios and macadamia nuts)		X
Celery		X
Mustard		X
Sesame Seeds		X
Sulphur dioxide and sulphates at concentrations of over 10ppm (parts per million)		X
Lupin		X
Molluscs		X

No nutritional claims are made

Packaging Details

Barcode (Case)	615357 122 307		
Case Dimensions	Length	Width	Height
	250 mm	130 mm	120 mm
Barcode (Outer)	not applicable		
Outer Dimensions	Length	Width	Height
	600 mm	506 mm	563 mm
Units per outer	32		
Case Net Weight	200 g		

Metal Detection

Metal Type	Ferrous	Non ferrous	Stainless
Sensitivity	3.5mm	N/A	N/A
Frequency of Check	At start of production, at 30 minute intervals, at end of production.		

Weight Checks

Product Weight	200 g
T1 tolerance value (for average weight)	199 g
T2 tolerance value (for average weight)	198.5 g

Packed in compliance with Average Weight Legislation

Shelf Life	
Shelf Life	24 Months
Min shelf life upon delivery	12 Months
Max shelf life upon delivery	24 Months

Brewing Instructions
For the perfect cup
Use one tea bag per person, pour freshly boiled water over and infuse for 4-5 minutes. Enjoy on its own or with a little honey

Storage Condition	
Storage temperature	Ambient
Storage conditions	Store in a cool, dry place.
Storage once opened	N/A

Date Mark/ Lot Coding	
Date Marking (Best Before End)	Best Before End
Shelf Life	24 Months
BBE Position	Laser panel, end of Carton
BBE Format	MM/YYYY e.g. 10/2020
Production code/ Julian code Format (printed on box/bag)	L1061 1=Year 061=Day of year

No part of this specification may be altered without prior agreement by Taylors of Harrogate.

Product specification contents are confidential to Taylors and the supplier and must not be disclosed to any third party without agreement.

This product must comply with all UK/EEC food and packaging legislation.