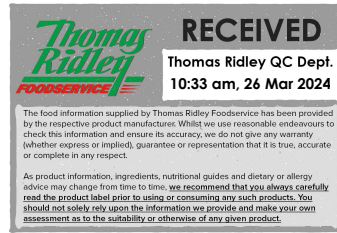


12181



SBS Signature Fruit Danish Selection SG 36x110

Signature Fruit Danish Selection (Multipack)

PRODUCT DESCRIPTION

A selection of 3 Danish pastries: Rhubarb & Custard Meringue Square, Cherry & Almond Bakewell Square, Apple & Cinnamon Square. Includes 1 x 135g icing bag.

Brand	Lantmannen Unibake
Manufacturer Product Code	225843
Product Type	Food
Product Category	Bakery - General
Storage Type	Frozen
Erudus ID	003575bc38354a3faeee157034686c31
Specification Type	Legacy

Apple & Cinnamon Square

Manufacturer Component Code	225844
Outer Case GTIN	05038910011538



INGREDIENTS

Ingredient Declaration

DOUGH: WHEAT Flour (with Calcium, Iron, Niacin, Thiamin), Vegetable Margarine (Palm Oil, Rapeseed Oil, Water, Emulsifier (E471), Salt, Acidity Regulator (E330), Flavouring), Water, Yeast, Egg (EGG, Salt), Sugar, WHEAT Gluten, Improver (WHEAT Flour (with Calcium, Iron, Niacin, Thiamin), Flour Treatment Agent (E300)), Stabiliser (E417). **FILLING:** Chunky Apple Filling (23.5%) (Apples, Apple Puree, Water, Sugar, Modified Maize Starch, Apple Concentrate, Flavouring, Acidity Regulator (E330), Preservative (E202)), Water, Custard Powder (Sugar, Modified Potato Starch, Whey Powder (MILK), Skimmed MILK Powder, Coconut Oil, Stabilisers (E404, E450iii, E339ii, E451i), Glucose Syrup, Flavouring, Colour (E160aiii), Salt, MILK Protein), Cinnamon. **TOPPING:** Speculoos Crumbs (WHEAT Flour, Sugar, Vegetable Oil (Palm Oil, Rapeseed Oil), Sugar Candy Syrup (Water, Sugar), Raising Agent (E500), Salt, Cinnamon), Glaze (Water, Stabiliser (E953), Sugar, Gelling Agent (E406), Acidity Regulator (E330), Preservative (E202)).

ALLERGENS

Product Contains:

Celery/Celeriac	No	Mustard	No
Cereals Containing Gluten	Yes	Nuts (Tree)	May Contain
Barley	No	Almond nuts	May Contain
Oats	No	Brazil nuts	No
Rye	No	Cashew nuts	No
Wheat (including Spelt and Khorasan)	Yes	Hazelnuts	May Contain
Gluten content <20ppm	No	Macadamia (Queensland) nuts	No
Crustacea	No	Pecan nuts	May Contain
Eggs	Yes	Pistachio nuts	No
Fish	No	Walnuts	May Contain
Lupin	No	Peanuts	No
Milk	Yes	Sesame Seeds	No
Molluscs	No	Soybeans	No
		Sulphur Dioxide and Sulphites	No

Risk Source:

Additional Allergen Information

For allergens, including cereals containing gluten, see ingredients in CAPITALS. May contain traces of nuts.

SUPPLEMENTARY INGREDIENT INFORMATION

Palm Oil	Yes
Hydrogenated Vegetable Oil/Fat	No
GM Protein/DNA	No

ADDITIVES

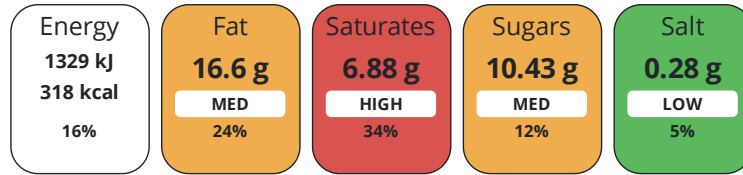
Product Contains:

Artificial Antioxidants	No	Artificial Flavourings	No
Artificial Colours	No	Artificial Preservatives	Yes
Artificial Flavour Enhancers	No	Artificial Sweeteners	No
Suitable for Coeliacs	No	Halal Diet	No
Kosher Diet	No	Vegetarian Diet	No
Vegan Diet	No		

DIET SUITABILITY

NUTRITIONAL INFORMATION

Each 100g/ml portion contains:



of your reference intake.

Typical values per 100g/ml : Energy 318kcal / 1329kj

Nutrient	per 100g/ml	RI per 100g/ml	per 106.8g/ml serving	RI per 106.8g/ml serving
Energy (kJ)	1329 kJ	16%	1419.4 kJ	17%
Energy (kcal)	318 kcal	16%	339.6 kcal	17%
Fat	16.6 g	24%	17.7 g	25%
of which Saturates	6.88 g	34%	7.3 g	37%
of which Mono-unsaturates	6.54 g		7 g	
of which Polyunsaturates	2.4 g		2.6 g	
Carbohydrate	36.2 g	14%	38.7 g	15%
of which Sugars	10.43 g	12%	11.1 g	12%
Fibre	1.47 g		1.6 g	
Protein	5.14 g	10%	5.5 g	11%
Salt	0.28 g	5%	0.3 g	5%
Sodium	111 mg		118.5 mg	

Serving Size 106.8 g

SUPPLEMENTARY NUTRITIONAL INFORMATION

Trans Fats per 100 g/ml 0.01 g

HANDLING & STORAGE INFORMATION

Directions For Use

Bake from frozen for 18 minutes at 190°C.

Storage Instructions

Frozen < -18°C.

Shelf Life from Time of Production 365 Days

ACCREDITATIONS/
CERTIFICATIONS/
ASSURANCE
SCHEMES
ORIGIN

BRCGS Certified

Other Accreditation

Roundtable of Sustainable Palm Oil (RSPO)

Product Country of Origin/Place of United Kingdom

Provenance

PRODUCT
CHARACTERISTICS

Standards Testing

Do you undertake trend analysis of microbiological results? Yes

Is shelf life testing undertaken? Yes

Microbiological Standards

Organism	Description	Frequency	Target	Maximum	Sample (g or ml)
Bacillus Cereus (cfu/g or ml)		Every 6 months	<10	1000	-
Coliforms (cfu/g or ml)		Every 6 months	<10	10	-
Listeria SPP (cfu/g or ml)		Every 6 months	<0	0	-
Staphylococcus Aureus (cfu/g or ml)		Every 6 months	<20	1000	-
Total Viable Count (TVC) (cfu/g or ml)		Every 6 months	<1000	10000	-
Salmonella (cfu/g or ml)		Every 6 months	<0	0	-
Yeast (cfu/g or ml)		Every 6 months	<1000	1000	-
Moulds (cfu/g or ml)		Every 6 months	<1000	1000	-

Physical Standards

Test	Description	Frequency	Target	Range	Sample (g or ml)
Dimensions Height (mm)		Every Batch	<26	20 to 32	-
Dimensions Length (mm)		Every Batch	<89	80 to 98	-
Dimensions Width (mm)		Every Batch	<92.5	85 to 100	-
Weight (g)		Every Batch	<106.8	96.3 to 117.3	-

CONFIGURATION

Case Configuration

Inner Pack Configuration

Total Quantity of Inner Components in 36 Units

Outer Case

PRODUCT
WEIGHTS

Inner Component

Variable Weight Consumer Item No

Inner Component Weight 17 g

Outer Case

Outer Case Gross Weight 4.2 kg

Outer Case Net Weight 3.86 kg

PRODUCT
DIMENSIONS

Inner Component

Inner Component Depth 680 mm

Inner Component Width 790 mm

Inner Component Height 0 mm

Outer Case

Outer Case Depth 393 mm

Outer Case Width 293 mm

Outer Case Height 136 mm

PALLET
INFORMATION

Quantity of Cases Per Pallet Layer	10 Cases	Pallet Height	1.65 MTR
Quantity of Layers Per Pallet	11 Layers	Pallet Gross Weight	487.82 kg
Quantity of Cases Per Pallet	110 Cases		

PACKAGING

Inner Component Packaging

Type	Materials	Weight	Recycled Plastic %	Recyclable	Returnable	Composite
Bag	Plastic	17 g	0.00 %			

Outer Case Packaging

Type	Materials	Weight	Recycled Plastic %	Recyclable	Returnable	Composite
Case	Plastic	2 g	0.00 %			
Case	Paper/Cardboard	286 g	- %			

Transport Packaging

Type	Materials	Weight	Recycled Plastic %	Recyclable	Returnable	Composite
Other	Plastic	706 g	0.00 %		Yes	
Other	Paper/Cardboard	2 g	- %		Yes	
Other	Wood	25000 g	- %		Yes	

OTHER
INFORMATION

Manufacturer Comments

n/a

Rhubarb & Custard Meringue Square

Manufacturer Component Code 225845
Outer Case GTIN 05038910011538



INGREDIENTS

Ingredient Declaration

DOUGH: WHEAT Flour (with Calcium, Iron, Niacin, Thiamin), Vegetable Margarine (Palm Oil, Rapeseed Oil, Water, Emulsifier (E471), Salt, Acidity Regulator (E330), Flavouring), Water, Yeast, Egg (**EGG**, Salt), Sugar, **WHEAT** Gluten, Improver (**WHEAT** Flour (with Calcium, Iron, Niacin, Thiamin), Flour Treatment Agent (E300)), Stabiliser (E417). **FILLING:** Chunky Rhubarb Filling (24.0%) (Rhubarb, Sugar, Rhubarb Puree, Modified Maize Starch, Water, Vegetable Glycerine (E422), Preservative (E202), Acidity Regulator (E330), Black Carrot Concentrate), Water, Custard Powder (3.0%) (Icing Sugar, Modified Maize Starch, Skimmed **MILK** Powder, Coconut Oil, Stabiliser (E401), Emulsifier (E471), Salt, Flavouring, Colour (E160aiii)), Whipping Cream (**MILK**), Bourbon Vanilla Paste (Invert Sugar, Vanilla Extract, Water, Spent Vanilla Specks, Thickener (E413)), Spent Vanilla Seeds. **TOPPING:** Meringue Granules (3.0%) (Meringue (Sugar, **WHEAT** Starch, **EGG** Albumen Powder), Vegetable Fat (Shea Oil, Palm Oil, Emulsifier (E322))), Glaze (Water, Stabiliser (E953), Sugar, Gelling Agent (E406), Acidity Regulator (E330), Preservative (E202)).

ALLERGENS

Product Contains:

Celery/Celeriac	No	Mustard	No
Cereals Containing Gluten	Yes	Nuts (Tree)	May Contain
Barley	No	Almond nuts	May Contain
Oats	No	Brazil nuts	No
Rye	No	Cashew nuts	No
Wheat (including Spelt and Khorasan)	Yes	Hazelnuts	May Contain
Gluten content <20ppm	No	Macadamia (Queensland) nuts	No
Crustacea	No	Pecan nuts	May Contain
Eggs	Yes	Pistachio nuts	No
Fish	No	Walnuts	May Contain
Lupin	No	Peanuts	No
Milk	Yes	Sesame Seeds	No
Molluscs	No	Soybeans	No
		Sulphur Dioxide and Sulphites	No

Risk Source:

Additional Allergen Information

For allergens, including cereals containing gluten, see ingredients in CAPITALS. May contain traces of nuts.

SUPPLEMENTARY INGREDIENT INFORMATION

Palm Oil	Yes
Hydrogenated Vegetable Oil/Fat	No
GM Protein/DNA	No

ADDITIVES

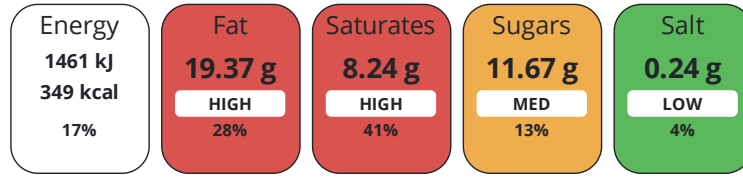
Product Contains:

Artificial Antioxidants	No	Artificial Flavourings	No
Artificial Colours	No	Artificial Preservatives	Yes
Artificial Flavour Enhancers	No	Artificial Sweeteners	No

DIET SUITABILITY

Suitable for Coeliacs	No	Halal Diet	No
Kosher Diet	No	Vegetarian Diet	No
Vegan Diet	No		

Each 100g/ml portion contains:



of your reference intake.

Typical values per 100g/ml : Energy 349kcal / 1461kJ

Nutrient	per 100g/ml	RI per 100g/ml	per 101.8g/ml serving	RI per 101.8g/ml serving
Energy (kJ)	1461 kJ	17%	1487.3 kJ	18%
Energy (kcal)	349 kcal	17%	355.3 kcal	18%
Fat	19.37 g	28%	19.7 g	28%
of which Saturates	8.24 g	41%	8.4 g	42%
of which Mono-unsaturates	7.52 g		7.7 g	
of which Polyunsaturates	2.67 g		2.7 g	
Carbohydrate	37.9 g	15%	38.6 g	15%
of which Sugars	11.67 g	13%	11.9 g	13%
Fibre	1.27 g		1.3 g	
Protein	5.28 g	11%	5.4 g	11%
Salt	0.24 g	4%	0.2 g	3%
Sodium	93 mg		94.7 mg	

Serving Size 101.8 g

Trans Fats per 100 g/ml 0.01 g

Directions For Use

Bake from frozen for 18 minutes at 190°C.

Storage Instructions

Frozen < -18°C.

Shelf Life from Time of Production 365 Days

BRCGS Certified

Other Accreditation

Roundtable of Sustainable Palm Oil (RSPO)

Product Country of Origin/Place of United Kingdom

Provenance

Standards Testing

Do you undertake trend analysis of microbiological results? Yes

Is shelf life testing undertaken? Yes

Microbiological Standards

Organism	Description	Frequency	Target	Maximum	Sample (g or ml)
Bacillus Cereus (cfu/g or ml)		Every 6 months	<10	1000	-
Coliforms (cfu/g or ml)		Every 6 months	<10	10	-
Listeria SPP (cfu/g or ml)	25g	Every 6 months	<0	0	-

Organism	Description	Frequency	Target	Maximum	Sample (g or ml)
Staphylococcus Aureus (cfu/g or ml)		Every 6 months	<20	1000	-
Total Viable Count (TVC) (cfu/g or ml)		Every 6 months	<1000	10000	-
Salmonella (cfu/g or ml)	25g	Every 6 months	<0	0	-
Yeast (cfu/g or ml)		Every 6 months	<1000	1000	-
Moulds (cfu/g or ml)		Every 6 months	<1000	1000	-

Physical Standards

Test	Description	Frequency	Target	Range	Sample (g or ml)
Dimensions Height (mm)		Every Batch	<26	20 to 32	-
Dimensions Length (mm)		Every Batch	<89	80 to 98	-
Dimensions Width (mm)		Every Batch	<92.5	85 to 100	-
Weight (g)		Every Batch	<101.8	92.3 to 111.3	-

CONFIGURATION

Case Configuration Inner Pack Configuration

Total Quantity of Inner Components in Outer Case 36 Units

PRODUCT WEIGHTS

Inner Component
Variable Weight Consumer Item No
 Outer Case
Outer Case Gross Weight 4.2 kg
Outer Case Net Weight 3.86 kg

PRODUCT DIMENSIONS

Inner Component
Inner Component Depth 680 mm
Inner Component Width 790 mm
Inner Component Height 0 mm
 Outer Case
Outer Case Depth 393 mm
Outer Case Width 293 mm
Outer Case Height 136 mm

PALLET INFORMATION

Quantity of Cases Per Pallet Layer 10 Cases **Pallet Height** 1.65 MTR
Quantity of Layers Per Pallet 11 Layers **Pallet Gross Weight** 487.82 kg
Quantity of Cases Per Pallet 110 Cases

PACKAGING

Inner Component Packaging						
Type	Materials	Weight	Recycled Plastic %	Recyclable	Returnable	Composite
Bag	Plastic	17 g	0.00 %			
Outer Case Packaging						
Type	Materials	Weight	Recycled Plastic %	Recyclable	Returnable	Composite
Case	Plastic	2 g	0.00 %			
Case	Paper/Cardboard	286 g	- %			

Transport Packaging

Type	Materials	Weight	Recycled Plastic %	Recyclable	Returnable	Composite
Other	Plastic	706 g	0.00 %		Yes	
Other	Paper/Cardboard	2 g	- %		Yes	
Other	Wood	25000 g	- %		Yes	

OTHER
INFORMATION

Manufacturer Comments

n/a

Cherry & Almond Bakewell Square

Manufacturer Component Code 225846
 Outer Case GTIN 05038910011538



INGREDIENTS

Ingredient Declaration

DOUGH: **WHEAT** Flour (with Calcium, Iron, Niacin, Thiamin), Vegetable Margarine (Palm Oil, Rapeseed Oil, Water, Emulsifier (E471), Salt, Acidity Regulator (E330), Flavouring), Water, Yeast, Egg (**EGG**, Salt), Sugar, **WHEAT** Gluten, Improver (**WHEAT** Flour (with Calcium, Iron, Niacin, Thiamin), Flour Treatment Agent (E300)), Stabiliser (E417). **FILLING:** Cherry Filling (23.3%) (Cherries, Sugar, Water, Modified Maize Starch, Elderberry Concentrate, Flavouring, Acidity Regulator (E330), Preservative (E202)), Vegetable Margarine (Palm Oil, Rapeseed Oil, Water, Coconut Oil, Salt, Emulsifier (E471), Acidity Regulator (E330), Flavouring), Sugar, **ALMOND** Powder, **WHEAT** Flour (with Calcium, Iron, Niacin, Thiamin), Water, Custard Powder (Sugar, Modified Potato Starch, Whey Powder (**MILK**), Skimmed **MILK** Powder, Coconut Oil, Stabilisers (E404, E450iii, E339ii, E451i), Glucose Syrup, Flavouring, Colour (E160aiii), Salt, **MILK** Protein), Egg (**EGG**, Salt), Flavouring. **TOPPING:** **ALMONDS** (2.9%), Glaze (Water, Stabiliser (E953), Sugar, Gelling Agent (E406), Acidity Regulator (E330), Preservative (E202)).
ICING: Sugar, Water, Glucose Syrup.

ALLERGENS

Product Contains:

Celery/Celeriac	No	Mustard	No
Cereals Containing Gluten	Yes	Nuts (Tree)	Yes
Barley	No	Almond nuts	Yes
Oats	No	Brazil nuts	No
Rye	No	Cashew nuts	No
Wheat (including Spelt and Khorasan)	Yes	Hazelnuts	May Contain
Gluten content <20ppm	No	Macadamia (Queensland) nuts	No
Crustacea	No	Pecan nuts	May Contain
Eggs	Yes	Pistachio nuts	No
Fish	No	Walnuts	May Contain
Lupin	No	Peanuts	No
Milk	Yes	Sesame Seeds	No
Molluscs	No	Soybeans	No
		Sulphur Dioxide and Sulphites	No

Risk Source:

Additional Allergen Information

For allergens, including cereals containing gluten, see ingredients in CAPITALS. May contain traces of other nuts and cherry stones.

SUPPLEMENTARY INGREDIENT INFORMATION

Palm Oil	Yes
Hydrogenated Vegetable Oil/Fat	No
GM Protein/DNA	No

ADDITIVES

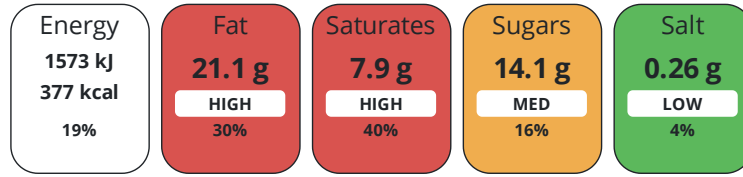
Product Contains:

Artificial Antioxidants	No	Artificial Flavourings	No
Artificial Colours	No	Artificial Preservatives	Yes
Artificial Flavour Enhancers	No	Artificial Sweeteners	No

DIET SUITABILITY

Suitable for Coeliacs	No	Halal Diet	Suitable for
Kosher Diet	No	Vegetarian Diet	Suitable for
Vegan Diet	No		

Each 100g/ml portion contains:



of your reference intake.

Typical values per 100g/ml : Energy 377kcal / 1573kJ

Nutrient	per 100g/ml	RI per 100g/ml	per 101.8g/ml serving	RI per 101.8g/ml serving
Energy (kJ)	1573 kJ	19%	1601.3 kJ	19%
Energy (kcal)	377 kcal	19%	383.8 kcal	19%
Fat	21.1 g	30%	21.5 g	31%
of which Saturates	7.9 g	40%	8 g	40%
of which Mono-unsaturates	8.91 g		9.1 g	
of which Polyunsaturates	3.27 g		3.3 g	
Carbohydrate	39.1 g	15%	39.8 g	15%
of which Sugars	14.1 g	16%	14.4 g	16%
Fibre	1.9 g		1.9 g	
Protein	6.7 g	13%	6.8 g	14%
Salt	0.26 g	4%	0.3 g	5%
Sodium	10.3 mg		10.5 mg	

Serving Size 101.8 g

Trans Fats per 100 g/ml 0.01 g

SUPPLEMENTARY
NUTRITIONAL
INFORMATION

HANDLING &
STORAGE
INFORMATION

Directions For Use

Bake from frozen for 18 minutes at 190°C.

Storage Instructions

Frozen < -18°C.

Shelf Life from Time of Production 365 Days

ACCREDITATIONS/
CERTIFICATIONS/
ASSURANCE
SCHEMES
ORIGIN

BRCGS Certified

Other Accreditation

Roundtable of Sustainable Palm Oil (RSPO)

Product Country of Origin/Place of United Kingdom

Provenance

PRODUCT
CHARACTERISTICS

Standards Testing

Do you undertake trend analysis of microbiological results? Yes

Is shelf life testing undertaken? Yes

Microbiological Standards

Organism	Description	Frequency	Target	Maximum	Sample (g or ml)
Bacillus Cereus (cfu/g or ml)		Every 6 months	<10	1000	-
Coliforms (cfu/g or ml)		Every 6 months	<10	10	-
Listeria SPP (cfu/g or ml)	25g	Every 6 months	<0	0	-

Organism	Description	Frequency	Target	Maximum	Sample (g or ml)
Staphylococcus Aureus (cfu/g or ml)		Every 6 months	<20	1000	-
Total Viable Count (TVC) (cfu/g or ml)		Every 6 months	<1000	10000	-
Salmonella (cfu/g or ml)	25g	Every 6 months	<0	0	-
Yeast (cfu/g or ml)		Every 6 months	<1000	1000	-
Moulds (cfu/g or ml)		Every 6 months	<1000	1000	-

Physical Standards

Test	Description	Frequency	Target	Range	Sample (g or ml)
Dimensions Height (mm)		Every Batch	<26	20 to 32	-
Dimensions Length (mm)		Every Batch	<89	80 to 98	-
Dimensions Width (mm)		Every Batch	<92.5	85 to 100	-
Weight (g)		Every Batch	<101.8	92.3 to 111.3	-

CONFIGURATION

Case Configuration

Inner Pack Configuration

Total Quantity of Inner Components in 36 Units

Outer Case

PRODUCT WEIGHTS

Inner Component

Variable Weight Consumer Item No

Inner Component Weight 17 g

Outer Case

Outer Case Gross Weight 4.2 kg

Outer Case Net Weight 3.86 kg

PRODUCT DIMENSIONS

Inner Component

Inner Component Depth 680 mm

Inner Component Width 790 mm

Inner Component Height 0 mm

Outer Case

Outer Case Depth 393 mm

Outer Case Width 293 mm

Outer Case Height 136 mm

PALLET INFORMATION

Quantity of Cases Per Pallet Layer 10 Cases **Pallet Height** 1.65 MTR

Quantity of Layers Per Pallet 11 Layers **Pallet Gross Weight** 487.82 kg

Quantity of Cases Per Pallet 110 Cases

PACKAGING

Inner Component Packaging

Type	Materials	Weight	Recycled Plastic %	Recyclable	Returnable	Composite
Bag	Plastic	17 g	0.00 %			

Outer Case Packaging

Type	Materials	Weight	Recycled Plastic %	Recyclable	Returnable	Composite
Case	Plastic	2 g	0.00 %			
Case	Paper/Cardboard	286 g	- %			

Transport Packaging

Type	Materials	Weight	Recycled Plastic %	Recyclable	Returnable	Composite
Other	Plastic	706 g	0.00 %		Yes	
Other	Paper/Cardboard	2 g	- %		Yes	
Other	Wood	25000 g	- %		Yes	

OTHER INFORMATION

Manufacturer Comments

n/a

CONTACT INFORMATION

Address

Lantmannen Unibake
Maidstone Road
Kingston
Milton Keynes
MK10 0BD
England

P. (Phone) 07780837112

Complaints Contact

Ursula Jaillet
Technical Coordinator
ursula.jaillet@lantmannen.com

Technical Contact

Inesa Jegoroviene
Senior Specifications Technologist
inesa.jegoroviene@lantmannen.com

P. (Phone) 07885418956

The information on the [Erudus System](#) has been supplied by the manufacturers of the products and, whilst the owners of the Erudus System take steps to ensure the information is regularly updated, they give no warranty and no guarantee that the information is accurate. Product information and ingredients may change, please always read product labels carefully in addition to using the information provided by Erudus.

We do not accept liability for any inaccuracies or incorrect information contained on this site.
Please visit <http://www.erudus.com/terms-and-conditions> for full terms and conditions.