

Changed Feb 05, 2024 09:09

Reviewed Feb 05, 2024 09:09

Erudus ID 108c522eb132481b8d3f7a322867e110

Version 1.0



2270865 Eat Real Lentil Chips Chilli & Lemon 18 X 40g

Eat Real Lentil Chips Chilli & Lemon 18x40g

PRODUCT DESCRIPTION

Lentil based chips with chilli & lemon seasoning.

Brand	Eat Real
Manufacturer Product Code	2270865
Manufacturer Version	1
Number	
Effective Date	Feb 5, 2024
Product Type	Food
Product Category	Crisps & Snacks
Storage Type	Ambient
Erudus ID	108c522eb132481b8d3f7a322867e110
Specification Type	Generic

Inner Component GTIN 5060878780546

Outer Case GTIN 15060878780543



INGREDIENTS

Ingredient Declaration

Ingredients: Lentil Flour (40%), Potato Starch, Rapeseed Oil, Maize Flour, Chilli & Lemon Seasoning [Rice Flour, Salt, Paprika, Garlic Powder, Onion Powder, Chilli, Yeast Extract Powder, Acid (Citric Acid), Cayenne Pepper, Cumin, Dried Yeast, Natural Flavouring, Black Pepper, Garlic, Lemon Powder, Oregano, Colour (Paprika Extract)], Salt.

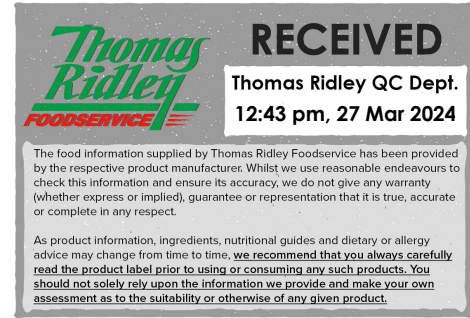
Ingredient Statements

N/A

ALLERGENS

Product Contains:

Celery/Celeriac	No	Mustard	No
Cereals Containing Gluten	No	Nuts (Tree)	No
Barley	No	Almond nuts	No
Oats	No	Brazil nuts	No
Rye	No	Cashew nuts	No
Wheat (including Spelt and Khorasan)	No	Hazelnuts	No
Crustacea	No	Macadamia (Queensland) nuts	No
Eggs	No	Pecan nuts	No
Fish	No	Pistachio nuts	No
Lupin	No	Walnuts	No
Milk	No	Peanuts	No
Molluscs	No	Sesame Seeds	No
		Soybeans	No
		Sulphur Dioxide and Sulphites	No



Allergen Statement On Pack

N/A

Additional Allergen Information

N/A

SUPPLEMENTARY
INGREDIENT
INFORMATION

Palm Oil	No	Alcoholic Strength %Vol (ABV)	0 % Vol
Hydrogenated Vegetable Oil/Fat	No	CBD Concentration per Unit	0 mg
GM Protein/DNA	No		

ADDITIVES

Product Contains:

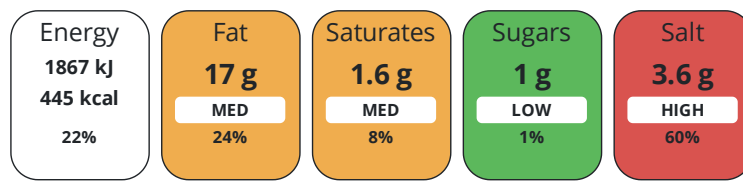
Artificial Antioxidants	No	Artificial Flavourings	No
Artificial Colours	No	Artificial Preservatives	No
Artificial Flavour Enhancers	No	Artificial Sweeteners	No

DIET
SUITABILITY

Vegan Diet	Certified	Vegetarian Diet	Suitable for
Halal Diet	Suitable for	Kosher Diet	Certified

NUTRITIONAL
INFORMATION

Each 100g/ml portion contains:



of your reference intake.

Typical values per 100g/ml : Energy 445kcal / 1867kJ

Nutrient	per 100g	RI per 100g	per 18g serving	RI per 18g serving	per 18g of prepared product
Energy (kJ)	1867 kJ	22%	336.1 kJ	4%	1867 kJ
Energy (kcal)	445 kcal	22%	80.1 kcal	4%	445 kcal
Fat	17 g	24%	3.1 g	4%	17 g
of which Saturates	1.6 g	8%	0.3 g	2%	1.6 g
Carbohydrate	62 g	24%	11.2 g	4%	62 g
of which Sugars	1 g	1%	0.2 g	0%	1 g
Fibre	4.9 g		0.9 g		4.9 g
Protein	13 g	26%	2.3 g	5%	13 g
Salt	3.6 g	60%	0.6 g	10%	3.6 g

Prepared Product Details

This pack contains approximately 2-3 servings

Serving Size	18 g
Number of Servings	3 Servings

Source of Nutritional Information Manufacturers analysis**Nutrition Statements**

30% LESS FAT* *30% LESS FAT THAN FRIED POTATO CRISPS

SUPPLEMENTARY
NUTRITIONAL
INFORMATION

Fibre Type	Fibre AOAC
-------------------	------------

HFSS (HIGH IN
FAT, SALT AND
SUGAR)

HFSS Status	No
--------------------	----

HANDLING & STORAGE INFORMATION

Directions For Use

N/A

Storage Instructions

Store in a cool dry place.

Storage Instructions After Opening

N/A

Shelf Life from Time of Production 270 Days

Exempt From Shelf Life Labelling No

Shelf Life From Opening 0 Days

ACCREDITATIONS/ CERTIFICATIONS/ ASSURANCE SCHEMES ORIGIN

BRCGS Certified

The Vegan Society

Product Country of Origin/Place of United Kingdom

Provenance

Additional Origin Details

N/A

PRODUCT CHARACTERISTICS

Standards Testing

Do you undertake trend analysis of microbiological results? Yes

Is shelf life testing undertaken? Yes

Commercially Sterile No

Microbiological Standards

Organism	Description	Frequency	Target	Maximum	Sample (g or ml)
Total Viable Count (TVC) (cfu/g or ml)		Annually	<10000	10000	10
Enterobacteriaceae (cfu/g or ml)		Annually	<100	100	10
E. Coli (cfu/g or ml)		Annually	<10	10	10
Staphylococcus Aureus (cfu/g or ml)		Annually	<20	20	10
Yeast (cfu/g or ml)		Annually	<1000	1000	10
Moulds (cfu/g or ml)		Annually	<1000	1000	10
Bacillus Cereus (cfu/g or ml)		Annually	<10	10	10
Salmonella (cfu/g or ml)		Annually	=0	0	25
Listeria SPP (cfu/g or ml)		Annually	=0	0	25

Physical Standards

Test	Description	Frequency	Target	Range	Sample (g or ml)
Weight (g)		Every Batch	=40	49 to 31	40

ORGANOLEPTICS

Appearance Chips fully formed with bubbles. Approx. 3cm x 3 cm. Seasoning applied evenly.

Aroma Fresh with a hint of chilli & lemon. No rancid or off aroma.

Taste Typical product taste (chilli & lemon flavour) Correct Flavourings/ Seasonings.

Texture Light Crunch.

HAZARD CONTROLS

Metal Detection Yes

CONFIGURATION

Case Configuration

Inner Pack Configuration

Variable Inner Components in Outer Case	No
Total Quantity of Inner Components in Outer Case	18 Units
Is the Outer Case Splittable?	No

PRODUCT WEIGHTS

Inner Component	
Variable Weight Consumer Item	No
Inner Component Weight	40 g
e mark	Yes
Outer Case	
Outer Case Gross Weight	1.14 kg
Outer Case Net Weight	0.23 kg

PRODUCT DIMENSIONS

Inner Component	
Inner Component Depth	30 mm
Inner Component Width	170 mm
Inner Component Height	215 mm
Outer Case	
Outer Case Depth	239 mm
Outer Case Width	499 mm
Outer Case Height	184 mm

PALLET INFORMATION

Quantity of Cases Per Pallet Layer	10 Cases	Pallet Height	1.8 MTR
Quantity of Layers Per Pallet	8 Layers	Pallet Gross Weight	119.7 kg
Quantity of Cases Per Pallet	80 Cases		

PACKAGING

Inner Component Packaging							
Type	Materials	Weight	Recycled Plastic %	Recyclable	Returnable	Composite	
Bag	Plastic / OPP (Oriented Polypropylene)	5.29 g	0 %	No	No	No	
Outer Case Packaging							
Type	Materials	Weight	Recycled Plastic %	Recyclable	Returnable	Composite	
Box	Paper/Cardboard / Cardboard	209.4 g	- %	Yes	No	No	
Transport Packaging							
Type	Materials	Weight	Recycled Plastic %	Recyclable	Returnable	Composite	
Pallet Wrap	Plastic / PP (Polypropylene)	1 g	0 %	No	No	No	

MARKETING INFORMATION

Marketing Description
THIS IS A LENTIL CHIP (arrow) "YEAH, CRUNCHY."

OTHER INFORMATION

CONTACT
INFORMATION

Address

Propercorn
WARP Snacks. We are real + proper.
184 Drummond Street
London
London
NW1 3HP
England

P: (Phone) N/A

Complaints Contact

Sarah Whitmore
Technical Manager
sarah.w@warpsnacks.com

P: (Phone) 07586 138155

Technical Contact

Sarah Whitmore
Technical Manager
sarah.w@warpsnacks.com

P: (Phone) 07586 138155

Commercial Contact

Paul Wheeldon
Head of Wholesale
paul@warpsnacks.com

P: (Phone) 07392 198392

The information on the [Erudus System](#) has been supplied by the manufacturers of the products and, whilst the owners of the Erudus System take steps to ensure the information is regularly updated, they give no warranty and no guarantee that the information is accurate. Product information and ingredients may change, please always read product labels carefully in addition to using the information provided by Erudus.

We do not accept liability for any inaccuracies or incorrect information contained on this site.
Please visit <http://www.erudus.com/terms-and-conditions> for full terms and conditions.