

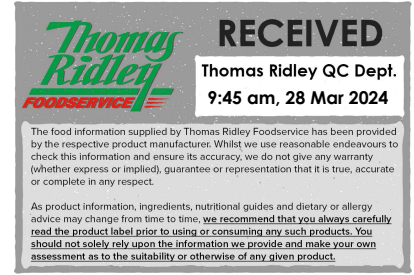
Santa Maria Flour Tortillas 10" Frozen

Flour Tortilla 5x

PRODUCT DESCRIPTION

Unlock the convenience of frozen tortillas. Heat, fill with seasoned beef or warm veggies, lettuce, and why not add Santa Maria's Medium Salsa for a quick and delicious meal.

Brand	Santa Maria UK
Manufacturer Product Code	4921
Product Type	Food
Product Category	Bread and Bread Products
Storage Type	Frozen
Erudus ID	e9f317ca63a8429680d6ba9bc27da234
Specification Type	Legacy



Outer Case GTIN 17311310049215



INGREDIENTS

Ingredient Declaration

WHEAT flour (66%) (**WHEAT** flour, calcium carbonate, iron, niacin, thiamin), water, rapeseed oil, **WHEAT** fibre, raising agents (E500, E450) salt, acidity regulator (E296), dextrose, **WHEAT** gluten, preservative (E282).

ALLERGENS

Product Contains:

Celery/Celeriac	No	Mustard	No
Cereals Containing Gluten	Yes	Nuts (Tree)	No
Barley	No	Almond nuts	No
Oats	No	Brazil nuts	No
Rye	No	Cashew nuts	No
Wheat (including Spelt and Khorasan)	Yes	Hazelnuts	No
Gluten content <20ppm	No	Macadamia (Queensland) nuts	No
Crustacea	No	Pecan nuts	No
Eggs	No	Pistachio nuts	No
Fish	No	Walnuts	No
Lupin	No	Peanuts	No
Milk	No	Sesame Seeds	No
Molluscs	No	Soybeans	No
		Sulphur Dioxide and Sulphites	No

SUPPLEMENTARY INGREDIENT INFORMATION

Palm Oil	No
Hydrogenated Vegetable Oil/Fat	No
GM Protein/DNA	No

ADDITIVES

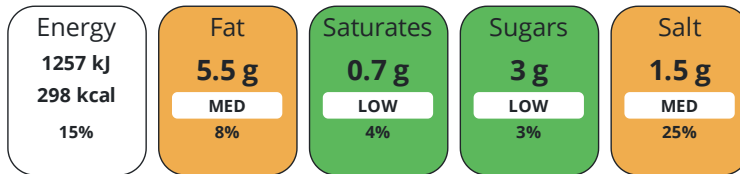
Product Contains:

Artificial Antioxidants	No	Artificial Flavourings	No
Artificial Colours	No	Artificial Preservatives	Yes
Artificial Flavour Enhancers	No	Artificial Sweeteners	No
Suitable for Coeliacs	No	Halal Diet	Suitable for
Kosher Diet	No	Vegetarian Diet	Suitable for
Vegan Diet	Suitable for		

DIET SUITABILITY

NUTRITIONAL INFORMATION

Each 100g/ml portion contains:



of your reference intake.

Typical values per 100g/ml : Energy 298kcal / 1257kj

Nutrient	per 100g/ml	RI per 100g/ml	per 58g/ml serving	RI per 58g/ml serving
Energy (kJ)	1257 kJ	15%	729.1 kJ	9%
Energy (kcal)	298 kcal	15%	172.8 kcal	9%
Fat	5.5 g	8%	3.2 g	5%
of which Saturates	0.7 g	4%	0.4 g	2%
of which Mono-unsaturates	2.6 g		1.5 g	
of which Polyunsaturates	1.3 g		0.8 g	
Carbohydrate	53 g	20%	30.7 g	12%
of which Sugars	3 g	3%	1.7 g	2%
of which Starch	0.4 g		0.2 g	
Fibre	4 g		2.3 g	
Protein	6.9 g	14%	4 g	8%
Salt	1.5 g	25%	0.9 g	15%
Sodium	620 mg		359.6 mg	

Serving Size 58 g

Trans Fats per 100 g/ml 0 g

SUPPLEMENTARY NUTRITIONAL INFORMATION

HANDLING & STORAGE INFORMATION

Directions For Use

Defrosting: Remove packs from case & stack no more than 2 high in a refrigerator. Before use, bring to ambient temperature (15-25°C) for 1 hour. Before opening, flex each pack back & forth to aid tortilla separation. Do not re-freeze. Once opened cover or reseal in film or foil, refrigerate & consume within 7 days, 24 hours ambient

Storage Instructions

Keep frozen. Standard frozen (-18°C). Once opened cover or reseal in film or foil, refrigerate & consume within 7 days, 24 hours ambient.

Shelf Life from Time of Production 720 Days

ACCREDITATIONS/ CERTIFICATIONS/ ASSURANCE SCHEMES

BRCGS Certified
Roundtable of Sustainable Palm Oil (RSPO)

Other Accreditation

ORIGIN	Product Country of Origin/Place of Provenance	United Kingdom					
	Additional Origin Details	UK					
PRODUCT CHARACTERISTICS	Standards Testing						
	Do you undertake trend analysis of microbiological results?	No	Is shelf life testing undertaken?		No		
	Microbiological Standards						
	Organism	Description	Frequency	Target	Maximum	Sample (g or ml)	
	E. Coli (cfu/g or ml)	Start of Life only when Enteros detected	Quarterly	<10	10	-	
	Enterobacteriaceae (cfu/g or ml)	Start of Life	Quarterly	<10	10	-	
	Staphylococcus Aureus (cfu/g or ml)	Start of Life	Quarterly	<50	50	-	
	Salmonella (cfu/g or ml)	Start of Life	Quarterly	=0	0	-	
Yeast (cfu/g or ml)	Start of Life	Quarterly	<100	100	-		
Moulds (cfu/g or ml)	Start of Life	Quarterly	<100	100	-		
CONFIGURATION	Case Configuration	Inner Pack Configuration					
	Total Quantity of Inner Components in Outer Case	5 Units					
	Is the Outer Case Splittable?	No					
PRODUCT WEIGHTS	Inner Component						
	Variable Weight Consumer Item Weight/Volume	No					
	580g						
	Outer Case						
	Outer Case Gross Weight	3.09 kg					
	Outer Case Net Weight	2.9 kg					
PRODUCT DIMENSIONS	Inner Component						
	Inner Component Depth	350 mm					
	Inner Component Width	280 mm					
	Inner Component Height	38 mm					
	Outer Case						
	Outer Case Depth	298 mm					
	Outer Case Width	294 mm					
	Outer Case Height	120 mm					
PALLET INFORMATION	Quantity of Cases Per Pallet Layer	12 Cases	Pallet Height		1.5 MTR		
	Quantity of Layers Per Pallet	13 Layers	Pallet Gross Weight		511.73 kg		
	Quantity of Cases Per Pallet	156 Cases					
	Inner Component Packaging						
PACKAGING	Type	Materials	Weight	Recycled Plastic %	Recyclable	Returnable	Composite
	Film	Plastic	5 g	- %			

Outer Case Packaging

Type	Materials	Weight	Recycled Plastic %	Recyclable	Returnable	Composite
Case	Paper/Cardboard	202 g	- %			

Transport Packaging

Type	Materials	Weight	Recycled Plastic %	Recyclable	Returnable	Composite
Other	Plastic	279 g	- %		Yes	

OTHER INFORMATION

Intrastat/Taric Code	1905908000	Identification/Health Marks	N/A
Commodity Code	1905908000		

Manufacturer Comments

For Minimum Order Quantity please refer to account manager Vitamin and mineral data being updated- analysis result awaited

CONTACT INFORMATION

Address	Technical Contact
Santa Maria UK	Alice Chiodzeka
Nimbus House	Quality Assurance & Commercial Quality Specialist
Maidstone Road	Alice.Chiodzeka@paulig.com
Milton Keynes	
Buckinghamshire	P: (Phone) 01908 933013
MK10 0BD	
England	
P: (Phone) 01908 933000	
Complaints Contact	Commercial Contact
Complaints Contact	Karen Kaye
Complaints Contact	Sales Support Specialist
Queriesuk@paulig.com	Karen.Kaye@paulig.com
P: (Phone) n/a	P: (Phone) 07866 746 217

The information on the [Erudus System](#) has been supplied by the manufacturers of the products and, whilst the owners of the Erudus System take steps to ensure the information is regularly updated, they give no warranty and no guarantee that the information is accurate. Product information and ingredients may change, please always read product labels carefully in addition to using the information provided by Erudus.

We do not accept liability for any inaccuracies or incorrect information contained on this site. Please visit <http://www.erudus.com/terms-and-conditions> for full terms and conditions.