

Changed Mar 18, 2024 13:25

Reviewed Mar 18, 2024 13:25

Erudus ID 0ac01356709e423e92bec5ef235f5ac1

Version 3.0

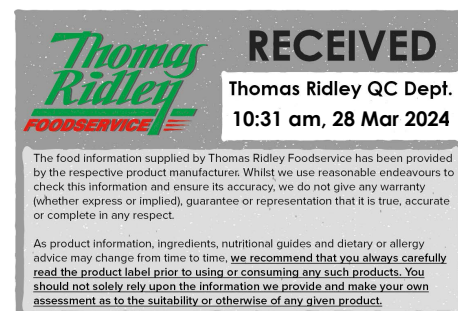
Springfield Creamy Coleslaw 2kg

Creamy Coleslaw

PRODUCT DESCRIPTION

Springfield Creamy Coleslaw 2kg

Brand	Midland Chilled Foods Ltd
Manufacturer Product Code	SA201T
Product Type	Food
Product Category	Confectionery
Storage Type	Chilled
Erudus ID	0ac01356709e423e92bec5ef235f5ac1
Specification Type	Generic



INGREDIENTS

Ingredient Declaration

Cabbage (48%), Mayonnaise (34%) [Rapeseed Oil, Water, Sugar Syrup (Sugar, Water), Spirit Vinegar, Salt, Pasteurised Salted Whole EGG (EGG, Salt), Stabilisers Guar Gum, Xanthan Gum **MUSTARD** Flour, Acidity Regulator (Lactic Acid)], Carrot (13%), Single Cream (MILK), Onion (2%), Spirit Vinegar, Preservative (Potassium Sorbate).

ALLERGENS

Product Contains:

Celery/Celериac	No	Mustard	Yes
Cereals Containing Gluten	No	Nuts (Tree)	No
Barley	No	Almond nuts	No
Oats	No	Brazil nuts	No
Rye	No	Cashew nuts	No
Wheat (including Spelt and Khorasan)	No	Hazelnuts	No
Crustacea	No	Macadamia (Queensland) nuts	No
Eggs	Yes	Pecan nuts	No
Fish	No	Pistachio nuts	No
Lupin	No	Walnuts	No
Milk	Yes	Peanuts	No
Molluscs	No	Sesame Seeds	No
		Soybeans	No
		Sulphur Dioxide and Sulphites	No

Additional Allergen Information

MILK, EGG AND MUSTARD

SUPPLEMENTARY INGREDIENT INFORMATION

Palm Oil	No
Hydrogenated Vegetable Oil/Fat	No
GM Protein/DNA	No

ADDITIVES

Product Contains:

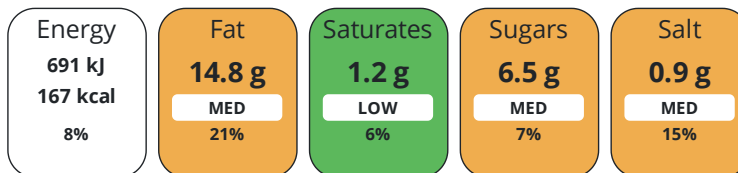
Artificial Preservatives	Yes
Vegetarian Diet	Suitable for
Kosher Diet	No

DIET SUITABILITY

Vegan Diet	No
Halal Diet	No

NUTRITIONAL
INFORMATION

Each 100g/ml portion contains:



of your reference intake.

Typical values per 100g/ml : Energy 167kcal / 691kJ

Nutrient	per 100g	RI per 100g
Energy (kJ)	691 kJ	8%
Energy (kcal)	167 kcal	8%
Fat	14.8 g	21%
of which Saturates	1.2 g	6%
Carbohydrate	6.8 g	3%
of which Sugars	6.5 g	7%
Protein	1 g	2%
Salt	0.9 g	15%

SUPPLEMENTARY
NUTRITIONAL
INFORMATION

HANDLING &
STORAGE
INFORMATION

Directions For Use

Ready to use

Storage Instructions

Chilled Temperature 0 to 5 degrees

Shelf Life from Time of Production 18 Days **Exempt From Shelf Life Labelling** No

ORIGIN

Product Country of Origin/Place of Provenance United Kingdom

PRODUCT
CHARACTERISTICS

Standards Testing
Do you undertake trend analysis of microbiological results? No **Is shelf life testing undertaken?** No

CONFIGURATION

Case Configuration Inner Pack Configuration
Total Quantity of Inner Components in Outer Case 1 Units

PRODUCT
WEIGHTS

Inner Component
Variable Weight Consumer Item Yes
Outer Case
Outer Case Gross Weight 0 kg
Outer Case Net Weight 0 kg

PRODUCT DIMENSIONS

Inner Component

Inner Component Depth	284 mm
Inner Component Width	183 mm
Inner Component Height	365 mm

Inner Pack

Inner Pack Depth	95 mm
Inner Pack Width	182 mm
Inner Pack Height	105.7 mm

Outer Case

Outer Case Depth	0 mm
Outer Case Width	0 mm
Outer Case Height	0 mm

PALLET INFORMATION

Quantity of Cases Per Pallet Layer	5 Cases
Quantity of Layers Per Pallet	15 Layers
Quantity of Cases Per Pallet	75 Cases

Pallet Height	0.1 MTR
----------------------	---------

OTHER INFORMATION CONTACT INFORMATION

Address

Midland Chilled Foods Ltd
Strings Lane
Willenhall
Wolverhampton
WY13 1LX
England

Technical Contact

Patricia Mattara
QA Manager
technical@midlandchilled.co.uk

P: (Phone) 01902 366004

P: (Phone) 01902 366004

The information on the [Erudus System](#) has been supplied by the manufacturers of the products and, whilst the owners of the Erudus System take steps to ensure the information is regularly updated, they give no warranty and no guarantee that the information is accurate. Product information and ingredients may change, please always read product labels carefully in addition to using the information provided by Erudus.

We do not accept liability for any inaccuracies or incorrect information contained on this site. Please visit <http://www.erudus.com/terms-and-conditions> for full terms and conditions.