

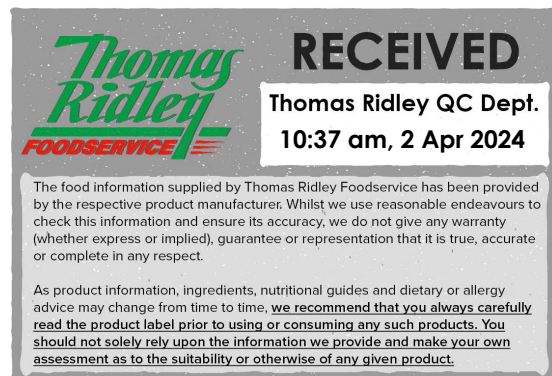
Lucozade Energy Orange 500ml

Lucozade Energy Orange 12x

PRODUCT DESCRIPTION

Powered by Glucose Glucose. It's for that moment when you need it most When the energy and the good times flow Whatever you do, do it with energy

Brand	Suntory Beverage & Food GB&I
Manufacturer Product Code	F96997
Product Type	Drink
Product Category	Juices and Cordials
Storage Type	Ambient
Erudus ID	520baec02ed64889ac35fd1a374b3e4d
Specification Type	Legacy
Inner Component GTIN	5054267000216
Outer Case GTIN	05054267401426



INGREDIENTS

Ingredient Declaration

Carbonated Water, Glucose Syrup (11%), Orange Juice from Concentrate (6%), Acid (Citric Acid), Acidity Regulator (Sodium Gluconate), Sweeteners (Sucralose, Acesulfame K), Preservative (Potassium Sorbate), Stabiliser (Acacia Gum), Caffeine, Flavourings, Antioxidant (Ascorbic Acid), Niacin (Vitamin B3), Colour (Beta Carotene).

ALLERGENS

Product Contains:

Celery/Celeriac	No	Mustard	No
Cereals Containing Gluten	No	Nuts (Tree)	No
Barley	No	Almond nuts	No
Oats	No	Brazil nuts	No
Rye	No	Cashew nuts	No
Wheat (including Spelt and Khorasan)	No	Hazelnuts	No
Gluten content <20ppm	Yes	Macadamia (Queensland) nuts	No
Crustacea	No	Pecan nuts	No
Eggs	No	Pistachio nuts	No
Fish	No	Walnuts	No
Lupin	No	Peanuts	No
Milk	No	Sesame Seeds	No
Molluscs	No	Soybeans	No
		Sulphur Dioxide and Sulphites	No

SUPPLEMENTARY INGREDIENT INFORMATION

Palm Oil	Yes
Hydrogenated Vegetable Oil/Fat	No
GM Protein/DNA	No

ADDITIVES

Product Contains:

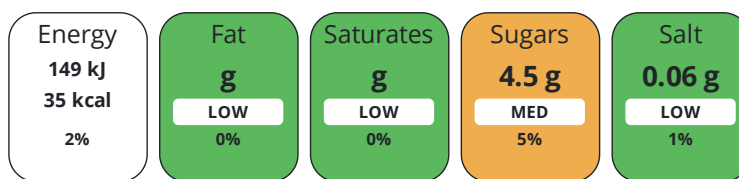
Artificial Antioxidants	Yes	Artificial Flavourings	No
Artificial Colours	No	Artificial Preservatives	Yes
Artificial Flavour Enhancers	No	Artificial Sweeteners	Yes

DIET
SUITABILITY

Suitable for Coeliacs	Yes	Halal Diet	No
Kosher Diet	No	Vegetarian Diet	Suitable for
Vegan Diet	Suitable for		

NUTRITIONAL
INFORMATION

Each 100g/ml portion contains:



of your reference intake.

Typical values per 100g/ml : Energy 35kcal / 149kj

Nutrient	per 100g/ml	RI per 100g/ml	per 250g/ml serving	RI per 250g/ml serving
Energy (kJ)	149 kJ	2%	372.5 kJ	4%
Energy (kcal)	35 kcal	2%	87.5 kcal	4%
Fat	0 g	0%	-	-
of which Saturates	0 g	0%	-	-
Carbohydrate	8.4 g	3%	21 g	8%
of which Sugars	4.5 g	5%	11.3 g	13%
Protein	0 g	0%	-	-
Salt	0.06 g	1%	0.2 g	3%
Sodium	24 mg		60 mg	
Serving Size	250 g			

SUPPLEMENTARY
NUTRITIONAL
INFORMATION

HFSS (HIGH IN
FAT, SALT AND
SUGAR)
HANDLING &
STORAGE
INFORMATION

HFSS Status	No
Directions For Use	Enjoy as part of a balanced diet and an active lifestyle. Not suitable for children under 3 years. Enjoy it cold.
Storage Instructions	Not specified
Shelf Life from Time of Production	180 Days

ACCREDITATIONS/
CERTIFICATIONS/
ASSURANCE
SCHEMES
ORIGIN

Roundtable of Sustainable Palm Oil (RSPO)	
Product Country of Origin/Place of Provenance	United Kingdom

Additional Origin Details	As above
----------------------------------	----------

PRODUCT
CHARACTERISTICS

Standards Testing	
Do you undertake trend analysis of microbiological results?	No
Is shelf life testing undertaken?	No

CONFIGURATION	Case Configuration		Inner Pack Configuration				
	Total Quantity of Inner Components in Outer Case	12 Units					
	Is the Outer Case Splittable?	Yes					
PRODUCT WEIGHTS	Inner Component						
	Variable Weight Consumer Item	No					
	Weight/Volume						
	500ml						
	Outer Case						
PRODUCT DIMENSIONS	Outer Case Gross Weight		6.53 kg				
	Outer Case Net Weight		6.19 kg				
	Inner Component						
	Inner Component Depth		66 mm				
	Inner Component Width		66 mm				
	Inner Component Height		227 mm				
	Outer Case						
	Outer Case Depth		279 mm				
	Outer Case Width		208 mm				
	Outer Case Height		230 mm				
PALLET INFORMATION	Quantity of Cases Per Pallet Layer	22 Cases	Pallet Height	1.5 MTR			
	Quantity of Layers Per Pallet	6 Layers	Pallet Gross Weight	890.49 kg			
	Quantity of Cases Per Pallet	132 Cases					
PACKAGING	Outer Case Packaging						
	Type	Materials	Weight	Recycled Plastic %	Recyclable	Returnable	Composite
	Case	Plastic	44 g	- %			
	Case	Paper/Cardboard	1 g	- %			
OTHER INFORMATION	Manufacturer Comments						
	Not specified						
CONTACT INFORMATION	Address						
	Suntory Beverage & Food GB&I						
	2 Longwalk Road,						
	Stockley Park						
	Uxbridge						
UB11 1BA							
England							
P: (Phone) 07785 432833							

The information on the [Erudus System](#) has been supplied by the manufacturers of the products and, whilst the owners of the Erudus System take steps to ensure the information is regularly updated, they give no warranty and no guarantee that the information is accurate. Product information and ingredients may change, please always read product labels carefully in addition to using the information provided by Erudus.

We do not accept liability for any inaccuracies or incorrect information contained on this site.
Please visit <http://www.erudus.com/terms-and-conditions> for full terms and conditions.