

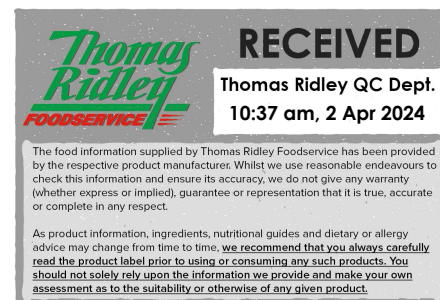
Lucozade Energy Original 500ml

Lucozade Energy Original 12x

PRODUCT DESCRIPTION

Powered by Glucose Glucose. It's for that moment. When you need it most. When the energy and the good times flow. Whatever you do, do it with energy.

Brand	Suntory Beverage & Food GB&I
Manufacturer Product Code	F96996
Product Type	Drink
Product Category	Juices and Cordials
Storage Type	Ambient
Erudus ID	d195a48411fe4ab9920727f7e86edc3d
Specification Type	Legacy
Inner Component GTIN	5054267000612
Outer Case GTIN	05054267401419



INGREDIENTS

Ingredient Declaration

Carbonated Water, Glucose Syrup (13%), Acids (Citric Acid, Lactic Acid), Acidity Regulator (Sodium Citrate), Preservative (Potassium Sorbate), Caffeine, Sweeteners (Sucralose, Acesulfame K), Antioxidant (Ascorbic Acid), Colours (Sunset Yellow, Ponceau 4R), Flavourings.

Sunset Yellow and Ponceau 4R may have an adverse effect on activity and attention in children.

ALLERGENS

Product Contains:

Celery/Celeriac	No	Mustard	No
Cereals Containing Gluten	No	Nuts (Tree)	No
Barley	No	Almond nuts	No
Oats	No	Brazil nuts	No
Rye	No	Cashew nuts	No
Wheat (including Spelt and Khorasan)	No	Hazelnuts	No
Gluten content <20ppm	Yes	Macadamia (Queensland) nuts	No
Crustacea	No	Pecan nuts	No
Eggs	No	Pistachio nuts	No
Fish	No	Walnuts	No
Lupin	No	Peanuts	No
Milk	No	Sesame Seeds	No
Molluscs	No	Soybeans	No
		Sulphur Dioxide and Sulphites	No

SUPPLEMENTARY INGREDIENT INFORMATION

Palm Oil	No
Hydrogenated Vegetable Oil/Fat	No
GM Protein/DNA	No

ADDITIVES

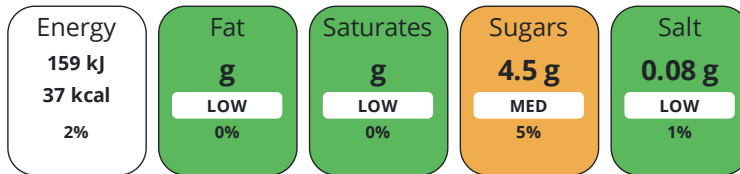
Product Contains:

Artificial Antioxidants	Yes	Artificial Flavourings	Yes
Artificial Colours	Yes	Artificial Preservatives	Yes
Artificial Flavour Enhancers	No	Artificial Sweeteners	Yes
Suitable for Coeliacs	Yes	Halal Diet	No
Kosher Diet	No	Vegetarian Diet	Suitable for
Vegan Diet	Suitable for		

DIET SUITABILITY

NUTRITIONAL INFORMATION

Each 100g/ml portion contains:



of your reference intake.

Typical values per 100g/ml : Energy 37kcal / 159kj

Nutrient	per 100g/ml	RI per 100g/ml	per 250g/ml serving	RI per 250g/ml serving
Energy (kJ)	159 kJ	2%	397.5 kJ	5%
Energy (kcal)	37 kcal	2%	92.5 kcal	5%
Fat	0 g	0%	-	
of which Saturates	0 g	0%	-	
Carbohydrate	8.9 g	3%	22.3 g	9%
of which Sugars	4.5 g	5%	11.3 g	13%
Protein	0 g	0%	-	
Salt	0.08 g	1%	0.2 g	3%
Sodium	< 0.01 mg		-	
Serving Size	250 g			

SUPPLEMENTARY NUTRITIONAL INFORMATION

HFSS (HIGH IN FAT, SALT AND SUGAR)

HFSS Status	No
--------------------	----

HANDLING & STORAGE INFORMATION

Directions For Use

Enjoy as part of a balanced diet and an active lifestyle. Not suitable for children under 3 years. Enjoy it cold.

Storage Instructions

Enjoy it cold

Shelf Life from Time of Production	180 Days
---	----------

ORIGIN

Product Country of Origin/Place of Provenance	United Kingdom
--	----------------

Additional Origin Details

As above

PRODUCT CHARACTERISTICS

Standards Testing			
Do you undertake trend analysis of microbiological results?	No	Is shelf life testing undertaken?	No

CONFIGURATION	Case Configuration		Inner Pack Configuration			
	Total Quantity of Inner Components in Outer Case	12 Units				
	Is the Outer Case Splittable?	Yes				
PRODUCT WEIGHTS	Inner Component					
	Variable Weight Consumer Item	No				
	Weight/Volume					
	500ml					
	Outer Case					
PRODUCT DIMENSIONS	Outer Case Gross Weight		6.55 kg			
	Outer Case Net Weight		6.2 kg			
	Inner Component					
	Inner Component Depth		66 mm			
	Inner Component Width		66 mm			
	Inner Component Height		227 mm			
	Outer Case					
	Outer Case Depth		279 mm			
	Outer Case Width		208 mm			
	Outer Case Height		230 mm			
PALLET INFORMATION	Quantity of Cases Per Pallet Layer	20 Cases	Pallet Height		1.5 MTR	
	Quantity of Layers Per Pallet	6 Layers	Pallet Gross Weight		813.52 kg	
	Quantity of Cases Per Pallet	120 Cases				
PACKAGING	Outer Case Packaging					
	Type	Materials	Weight	Recycled Plastic %	Recyclable	Returnable Composite
	Case	Plastic	44 g	- %		
	Case	Paper/Cardboard	1 g	- %		
OTHER INFORMATION	Manufacturer Comments					
	Not specified					
CONTACT INFORMATION	Address					
	Suntory Beverage & Food GB&I					
	2 Longwalk Road,					
	Stockley Park					
	Uxbridge					
UB11 1BA						
England						
P: (Phone) 07785 432833						

The information on the [Erudus System](#) has been supplied by the manufacturers of the products and, whilst the owners of the Erudus System take steps to ensure the information is regularly updated, they give no warranty and no guarantee that the information is accurate. Product information and ingredients may change, please always read product labels carefully in addition to using the information provided by Erudus.

We do not accept liability for any inaccuracies or incorrect information contained on this site.
Please visit <http://www.erudus.com/terms-and-conditions> for full terms and conditions.