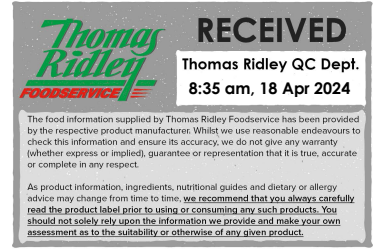


Changed Mar 26, 2024 11:02

Reviewed Mar 26, 2024 10:14

Erudus ID e318ab0afe854140bc2453d9dec1b9f9

Version 1.0



This specification is published by [Erudus](#) for Caterfood Buying Group

Caterfood Chocolate Ice Cream 4 litre

Soft Scoop Chocolate Ice Cream

PRODUCT DESCRIPTION

Soft Scoop Chocolate Flavour Ice Cream

| | |
|----------------------|----------------------------------|
| Brand | Caterfood Buying Group |
| Label Own Label Code | C20020 |
| Manufacturer Version | 1 |
| Number | |
| Batch Code | 12-digit batch code |
| Day Code | BB End of month |
| Product Type | Food |
| Product Category | Desserts |
| Storage Type | Frozen |
| Erudus ID | e318ab0afe854140bc2453d9dec1b9f9 |
| Specification Type | Dairy |
| Inner Pack GTIN | 5060158878093 |
| Outer Case GTIN | 5060158878086 |



INGREDIENTS

Ingredient Declaration

Water, Sugar, Palm Oil, Buttermilk Powder (**MILK**), Whey Powder (**MILK**), Dextrose, Fat Reduced Cocoa Powder (1.5%), Skimmed Milk Powder (**MILK**), Emulsifier (Mono & Di Glycerides of Fatty Acids), Stabilisers(Cellulose Gum, Guar Gum, Locust Bean Gum).

ALLERGENS

Product Contains:

| | | | |
|---|-----|--------------------------------------|----|
| Celery/Celery | No | Mustard | No |
| Cereals Containing Gluten | No | Nuts (Tree) | No |
| Barley | No | Almond nuts | No |
| Oats | No | Brazil nuts | No |
| Rye | No | Cashew nuts | No |
| Wheat (including Spelt and Khorasan) | No | Hazelnuts | No |
| Crustacea | No | Macadamia (Queensland) nuts | No |
| Eggs | No | Pecan nuts | No |
| Fish | No | Pistachio nuts | No |
| Lupin | No | Walnuts | No |
| Milk | Yes | Peanuts | No |
| Molluscs | No | Sesame Seeds | No |
| | | Soybeans | No |
| | | Sulphur Dioxide and Sulphites | No |

Allergen Statement On Pack

For allergens see ingredients in bold

SUPPLEMENTARY
INGREDIENT
INFORMATION

| | |
|---------------------------------------|-----|
| Palm Oil | Yes |
| Hydrogenated Vegetable Oil/Fat | No |
| GM Protein/DNA | No |

ADDITIVES

Product Contains:

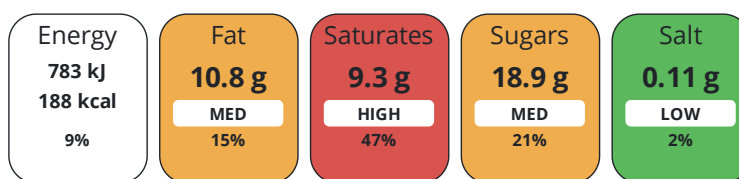
| | | | |
|-------------------------------------|----|---------------------------------|----|
| Artificial Antioxidants | No | Artificial Flavourings | No |
| Artificial Colours | No | Artificial Preservatives | No |
| Artificial Flavour Enhancers | No | Artificial Sweeteners | No |

DIET
SUITABILITY

| | | | |
|------------------------|--------------|-------------------|----|
| Vegetarian Diet | Suitable for | Halal Diet | No |
| Kosher Diet | No | | |

NUTRITIONAL
INFORMATION

Each 100g/ml portion contains:



of your reference intake.

Typical values per 100g/ml : Energy 188kcal / 783kj

| Nutrient | per 100g | RI per 100g | per 100g serving | RI per 100g serving |
|---------------------------|----------|-------------|------------------|---------------------|
| Energy (kJ) | 783 kJ | 9% | 783 kJ | 9% |
| Energy (kcal) | 188 kcal | 9% | 188 kcal | 9% |
| Fat | 10.8 g | 15% | 10.8 g | 15% |
| of which Saturates | 9.3 g | 47% | 9.3 g | 47% |
| Carbohydrate | 19.2 g | 7% | 19.2 g | 7% |
| of which Sugars | 18.9 g | 21% | 18.9 g | 21% |
| Fibre | 0.8 g | | 0.8 g | |
| Protein | 3 g | 6% | 3 g | 6% |
| Salt | 0.11 g | 2% | 0.1 g | 2% |
| Sodium | 40 mg | | 40 mg | |

Serving Size 100 g

Source of Nutritional Information Calculation from known/accepted datasets

VITAMINS AND
MINERALS

| Nutrient | per 100g | RI per 100g | per 100g serving | RI per 100g serving |
|--------------------------|----------|-------------|------------------|---------------------|
| Vitamin A | 0 µg | 0% | - | |
| Vitamin C | 0 mg | 0% | - | |
| Folate/Folic Acid | 2 µg | 1% | 2 µg | 1% |
| Calcium | 107 mg | 13% | 107 mg | 13% |
| Iron | 0.2 mg | 1% | 0.2 mg | 1% |
| Zinc | 0.4 mg | 4% | 0.4 mg | 4% |

SUPPLEMENTARY
NUTRITIONAL
INFORMATION

Trans Fats per 100 g/ml 0 g

HFSS (HIGH IN FAT, SALT AND SUGAR) HANDLING & STORAGE INFORMATION

| | |
|-----------------------------|---|
| HFSS Status | Yes |
| Directions For Use | Scoop from frozen |
| Storage Instructions | Always store frozen. Store at -18°C or below. Do not refreeze once defrosted. |

ACCREDITATIONS/ CERTIFICATIONS/ ASSURANCE SCHEMES

| | | | |
|---|----------|---|----|
| Shelf Life from Time of Production | 730 Days | Exempt From Shelf Life Labelling | No |
| BRCGS Certified | | BRCGS Food Safety | |
| Rainforest Alliance | | Sedex | |
| The Vegetarian Society | | Other Accreditation | |

ORIGIN

| | |
|--|----------------|
| Product Country of Origin/Place of Provenance | United Kingdom |
| Additional Origin Details | UK |

PRODUCT CHARACTERISTICS

| | | | | | |
|--|---------------------------|--|---------------|--------------|-------------------------|
| Standards Testing | | | | | |
| Do you undertake trend analysis of microbiological results? | Yes | Is shelf life testing undertaken? | Yes | | |
| Physical Standards | | | | | |
| Test | Description | Frequency | Target | Range | Sample (g or ml) |
| Weight (g) | half hourly weight checks | Every Batch | <1450 | 1400 to 1500 | 1450 |

SUPPLEMENTARY INFORMATION

| | | | |
|---------------------------------|-----|---------------------|-----|
| Milk Type | Cow | Pasteurised | Yes |
| Fried During Manufacture | No | Closure Type | Lid |

ORGANOLEPTICS

| | |
|-------------------|--|
| Appearance | A pale milky chocolate coloured ice cream in a white tub |
| Aroma | Sweet milky chocolate |
| Taste | Creamy milky chocolate with sweet notes |
| Texture | Smooth without granularity |

HAZARD CONTROLS

| | | | |
|------------------------|-----|----------------|-----|
| Metal Detection | Yes | Sieving | Yes |
| Filters | Yes | | |

CONFIGURATION

| | | | |
|---|---------|---------------------------------|--|
| Case Configuration | | Inner Pack Configuration | |
| Total Quantity of Inner Components in Outer Case | 6 Units | | |
| Is the Outer Case Splittable? | Yes | | |

PRODUCT WEIGHTS

| | |
|--------------------------------------|----------|
| Inner Component | |
| Variable Weight Consumer Item | Yes |
| Inner Component Weight | 1.45 kg |
| Net Drained Weight | 1.317 kg |
| Outer Case | |
| Outer Case Gross Weight | 9.8 kg |
| Outer Case Net Weight | 8.7 kg |

PRODUCT DIMENSIONS

| | |
|-------------------------------|--------|
| Inner Component | |
| Inner Component Depth | 228 mm |
| Inner Component Width | 167 mm |
| Inner Component Height | 153 mm |
| Outer Case | |
| Outer Case Depth | 493 mm |
| Outer Case Width | 228 mm |
| Outer Case Height | 298 mm |

PALLET INFORMATION

| | | | |
|---|----------|----------------------------|---------|
| Quantity of Cases Per Pallet Layer | 10 Cases | Pallet Height | 1.7 MTR |
| Quantity of Layers Per Pallet | 5 Layers | Pallet Gross Weight | 490 kg |
| Quantity of Cases Per Pallet | 50 Cases | | |

PACKAGING

Inner Component Packaging

| Type | Materials | Weight | Recycled Plastic % | Recyclable | Returnable | Composite |
|------|-----------------------------|--------|--------------------|------------|------------|-----------|
| Tub | Plastic / PE (Polyethylene) | 130 g | 0.00 % | Yes | No | No |

Outer Case Packaging

| Type | Materials | Weight | Recycled Plastic % | Recyclable | Returnable | Composite |
|------|-----------------------------|--------|--------------------|------------|------------|-----------|
| Case | Plastic / PS (Polystyrene) | 4 g | 0.00 % | No | No | No |
| Case | Paper/Cardboard / Cardboard | 322 g | - % | Yes | No | No |

Transport Packaging

| Type | Materials | Weight | Recycled Plastic % | Recyclable | Returnable | Composite |
|-------|----------------------------|---------|--------------------|------------|------------|-----------|
| Other | Plastic / PS (Polystyrene) | 168 g | 0.00 % | No | No | No |
| Other | Paper/Cardboard / Paper | 3 g | - % | Yes | No | No |
| Other | Wood | 28000 g | - % | Yes | Yes | No |

OTHER INFORMATION

| | |
|-----------------------|------------|
| Commodity Code | 2105001000 |
|-----------------------|------------|

CONTACT INFORMATION

| | |
|------------------------|--|
| ADDRESS | |
| Caterfood Buying Group | |
| BFS Group Ltd | |
| 814 Leigh Road | |
| Slough | |
| Berkshire | |
| SL1 4BD | |
| United Kingdom | |

The information on the [Erudus System](#) has been supplied by the manufacturers of the products and, whilst the owners of the Erudus System take steps to ensure the information is regularly updated, they give no warranty and no guarantee that the information is accurate. Product information and ingredients may change, please always read product labels carefully in addition to using the information provided by Erudus.

We do not accept liability for any inaccuracies or incorrect information contained on this site. Please visit <http://www.erudus.com/terms-and-conditions> for full terms and conditions.