

Changed Mar 26, 2024 11:53

Reviewed Mar 26, 2024 11:35

Erudus ID 3d1daeb5e5ba4b4ca6b4b8e6a4d1625e

Version 1.0



This specification is published by [Erudus](#) for Caterfood Buying Group

Caterfood Soft Scoop Vanilla Ice Cream 4 litre

Vanilla Ice Cream

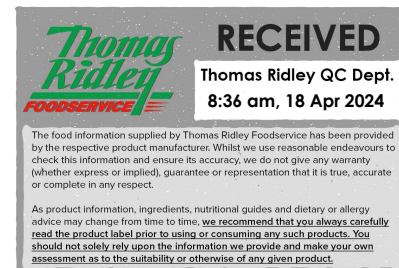
PRODUCT DESCRIPTION

Soft Scoop Vanilla Flavour Ice Cream

Brand	Caterfood Buying Group
Label Own Label Code	C20019
Product Type	Food
Product Category	Desserts
Storage Type	Frozen
Erudus ID	3d1daeb5e5ba4b4ca6b4b8e6a4d1625e
Specification Type	Dairy

Inner Component GTIN 5060158878079

Outer Case GTIN 5060158878062



INGREDIENTS

Ingredient Declaration

Water, Sugar, Palm Oil, Buttermilk Powder (MILK), Whey Powder (MILK), Dextrose, Skimmed Milk Powder (MILK), Emulsifier (Mono & Di Glycerides of Fatty Acids), Stabilisers (Cellulose Gum, Guar Gum, Locust Bean Gum), Flavourings, Colours (Annatto Norbixin, Curcumin.)

ALLERGENS

Product Contains:

Celery/Celeriac	No	Mustard	No
Cereals Containing Gluten	No	Nuts (Tree)	No
Barley	No	Almond nuts	No
Oats	No	Brazil nuts	No
Rye	No	Cashew nuts	No
Wheat (including Spelt and Khorasan)	No	Hazelnuts	No
Crustacea	No	Macadamia (Queensland) nuts	No
Eggs	No	Pecan nuts	No
Fish	No	Pistachio nuts	No
Lupin	No	Walnuts	No
Milk	Yes	Peanuts	No
Molluscs	No	Sesame Seeds	No
		Soybeans	No
		Sulphur Dioxide and Sulphites	No

SUPPLEMENTARY INGREDIENT INFORMATION

Palm Oil	Yes
Hydrogenated Vegetable Oil/Fat	No
GM Protein/DNA	No

ADDITIVES

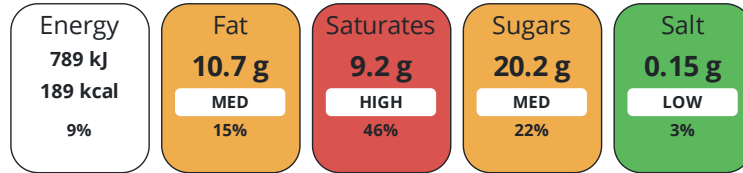
Product Contains:

Artificial Antioxidants	No	Artificial Flavourings	No
Artificial Colours	No	Artificial Preservatives	No
Artificial Flavour Enhancers	No	Artificial Sweeteners	No
Vegetarian Diet	Suitable for	Halal Diet	No
Kosher Diet	No		

DIET
SUITABILITY

NUTRITIONAL
INFORMATION

Each 100g/ml portion contains:



of your reference intake.

Typical values per 100g/ml : Energy 189kcal / 789kj

Nutrient	per 100g	RI per 100g	per 100g serving	RI per 100g serving
Energy (kJ)	789 kJ	9%	789 kJ	9%
Energy (kcal)	189 kcal	9%	189 kcal	9%
Fat	10.7 g	15%	10.7 g	15%
of which Saturates	9.2 g	46%	9.2 g	46%
Carbohydrate	20.2 g	8%	20.2 g	8%
of which Sugars	20.2 g	22%	20.2 g	22%
Fibre	0.3 g		0.3 g	
Protein	2.8 g	6%	2.8 g	6%
Salt	0.15 g	3%	0.2 g	3%
Sodium	60 mg		60 mg	

Serving Size 100 g

Source of Nutritional Information Calculation from known/accepted datasets

VITAMINS AND
MINERALS

Nutrient	per 100g	RI per 100g	per 100g serving	RI per 100g serving
Vitamin A	0 µg	0%	-	
Vitamin C	0 mg	0%	-	
Folate/Folic Acid	1 µg	1%	1 µg	1%
Calcium	105 mg	13%	105 mg	13%
Iron	0.1 mg	1%	0.1 mg	1%
Zinc	0.3 mg	3%	0.3 mg	3%

SUPPLEMENTARY
NUTRITIONAL
INFORMATION

Trans Fats per 100 g/ml 0 g

HFSS (HIGH IN
FAT, SALT AND
SUGAR)

HFSS Status Yes

HANDLING &
STORAGE
INFORMATION

Directions For Use

Scoop from frozen

Storage Instructions

Always store frozen. Store at -18°C or below. Do not refreeze once defrosted.

Shelf Life from Time of Production	730 Days	Exempt From Shelf Life Labelling	No
---	----------	---	----

ACCREDITATIONS/
CERTIFICATIONS/
ASSURANCE
SCHEMES

BRCGS Certified

Rainforest Alliance

Sedex

Other Accreditation

BRCGS Food Safety

Roundtable of Sustainable Palm Oil (RSPO)

The Vegetarian Society

ORIGIN

Product Country of Origin/Place of United Kingdom

Provenance

Additional Origin Details

UK

PRODUCT
CHARACTERISTICS

Standards Testing

Do you undertake trend analysis of microbiological results?	Yes	Is shelf life testing undertaken?	Yes
--	-----	--	-----

Physical Standards

Test	Description	Frequency	Target	Range	Sample (g or ml)
Weight (g)	half hourly check weight	Every Batch	<1.45	1.4 to 1.5	1450

SUPPLEMENTARY INFORMATION

Milk Type	Cow	Pasteurised	Yes
------------------	-----	--------------------	-----

Fried During Manufacture	No	Closure Type	Lid
---------------------------------	----	---------------------	-----

ORGANOLEPTICS

Appearance A pale yellow coloured ice cream in a white tub. Evidence of the filling head may be visible when the lid is removed.

Aroma Sweet milky vanilla

Taste Creamy sweet vanilla without taints

Texture Smooth without granularity

HAZARD CONTROLS

Metal Detection	Yes	Sieving	Yes
------------------------	-----	----------------	-----

Filters	Yes
----------------	-----

CONFIGURATION

Case Configuration Inner Pack Configuration

Total Quantity of Inner Components in 6 Units

Outer Case

Is the Outer Case Splittable? Yes

PRODUCT
WEIGHTS

Inner Component

Variable Weight Consumer Item Yes

Inner Component Weight 1.45 kg

Net Drained Weight 1.317 kg

Outer Case

Outer Case Gross Weight 9.8 kg

Outer Case Net Weight 8.7 kg

PRODUCT DIMENSIONS

Inner Component	
Inner Component Depth	228 mm
Inner Component Width	167 mm
Inner Component Height	153 mm
Outer Case	
Outer Case Depth	493 mm
Outer Case Width	228 mm
Outer Case Height	298 mm

PALLET INFORMATION

Quantity of Cases Per Pallet Layer	10 Cases	Pallet Height	1.7 MTR
Quantity of Layers Per Pallet	5 Layers	Pallet Gross Weight	490 kg
Quantity of Cases Per Pallet	50 Cases		

PACKAGING

Inner Component Packaging						
Type	Materials	Weight	Recycled Plastic %	Recyclable	Returnable	Composite
Tub	Plastic	130 g	0.00 %			
Outer Case Packaging						
Type	Materials	Weight	Recycled Plastic %	Recyclable	Returnable	Composite
Case	Plastic	4 g	0.00 %			
Case	Paper/Cardboard	322 g	- %			
Transport Packaging						
Type	Materials	Weight	Recycled Plastic %	Recyclable	Returnable	Composite
Other	Plastic	168 g	0.00 %		Yes	
Other	Paper/Cardboard	3 g	- %		Yes	
Other	Wood	28000 g	- %		Yes	

OTHER INFORMATION

Commodity Code	2105001000
-----------------------	------------

CONTACT INFORMATION

ADDRESS
Caterfood Buying Group
BFS Group Ltd
814 Leigh Road
Slough
Berkshire
SL1 4BD
United Kingdom

The information on the [Erudus System](#) has been supplied by the manufacturers of the products and, whilst the owners of the Erudus System take steps to ensure the information is regularly updated, they give no warranty and no guarantee that the information is accurate. Product information and ingredients may change, please always read product labels carefully in addition to using the information provided by Erudus.

We do not accept liability for any inaccuracies or incorrect information contained on this site. Please visit <http://www.erudus.com/terms-and-conditions> for full terms and conditions.