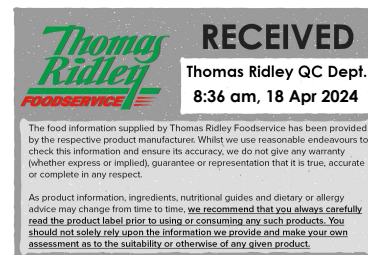


Changed Mar 26, 2024 11:11

Reviewed Mar 26, 2024 10:08

Erudus ID bb2266bdda044c48a453fa1c48e225fa

Version 1.0



This specification is published by [Erudus](#) for Caterfood Buying Group

# Caterfood Soft Scoop Strawberry Ice Cream 4 litre

Strawberry Soft Scoop Ice Cream

## PRODUCT DESCRIPTION

Soft Scoop Strawberry Flavour Ice Cream

Brand	Caterfood Buying Group
Label Own Label Code	C20021
Product Type	Food
Product Category	Desserts
Storage Type	Frozen
Erudus ID	bb2266bdda044c48a453fa1c48e225fa
Specification Type	Dairy
Inner Pack GTIN	5060158878116
Outer Case GTIN	5060158878109



## INGREDIENTS

### Ingredient Declaration

Water, Sugar, Palm Oil, Buttermilk Powder (**MILK**), Whey Powder (**MILK**), Dextrose, Skimmed Milk Powder (**MILK**), Emulsifier (Mono & Di Glycerides of Fatty Acids), Stabilisers (Carboxymethyl Cellulose, Guar Gum, Locust Bean Gum), Colours (Beetroot Red), Flavourings.

## ALLERGENS

Product Contains:

<b>Celery/Celeriac</b>	No	<b>Mustard</b>	No
<b>Cereals Containing Gluten</b>	No	<b>Nuts (Tree)</b>	No
<b>Barley</b>	No	<b>Almond nuts</b>	No
<b>Oats</b>	No	<b>Brazil nuts</b>	No
<b>Rye</b>	No	<b>Cashew nuts</b>	No
<b>Wheat (including Spelt and Khorasan)</b>	No	<b>Hazelnuts</b>	No
<b>Crustacea</b>	No	<b>Macadamia (Queensland) nuts</b>	No
<b>Eggs</b>	No	<b>Pecan nuts</b>	No
<b>Fish</b>	No	<b>Pistachio nuts</b>	No
<b>Lupin</b>	No	<b>Walnuts</b>	No
<b>Milk</b>	Yes	<b>Peanuts</b>	No
<b>Molluscs</b>	No	<b>Sesame Seeds</b>	No
		<b>Soybeans</b>	No
		<b>Sulphur Dioxide and Sulphites</b>	No

### Allergen Statement On Pack

For allergens see ingredients in **BOLD**

SUPPLEMENTARY  
INGREDIENT  
INFORMATION

<b>Palm Oil</b>	Yes
<b>Hydrogenated Vegetable Oil/Fat</b>	No
<b>GM Protein/DNA</b>	No

ADDITIVES

*Product Contains:*

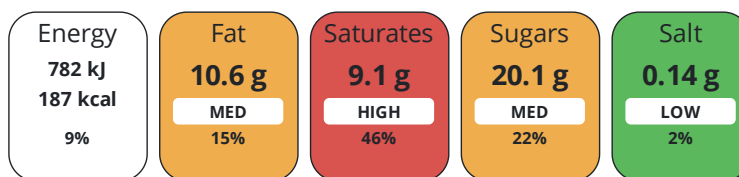
<b>Artificial Antioxidants</b>	No	<b>Artificial Flavourings</b>	Yes
<b>Artificial Colours</b>	No	<b>Artificial Preservatives</b>	No
<b>Artificial Flavour Enhancers</b>	No	<b>Artificial Sweeteners</b>	No

DIET  
SUITABILITY

<b>Vegetarian Diet</b>	Suitable for	<b>Halal Diet</b>	No
<b>Kosher Diet</b>	No		

NUTRITIONAL  
INFORMATION

Each 100g/ml portion contains:



of your reference intake.

Typical values per 100g/ml : Energy 187kcal / 782kj

Nutrient	per 100g	RI per 100g	per 100g serving	RI per 100g serving
<b>Energy (kJ)</b>	782 kJ	9%	782 kJ	9%
<b>Energy (kcal)</b>	187 kcal	9%	187 kcal	9%
<b>Fat</b>	10.6 g	15%	10.6 g	15%
<b>of which Saturates</b>	9.1 g	46%	9.1 g	46%
<b>Carbohydrate</b>	20.1 g	8%	20.1 g	8%
<b>of which Sugars</b>	20.1 g	22%	20.1 g	22%
<b>Fibre</b>	0.3 g		0.3 g	
<b>Protein</b>	2.7 g	5%	2.7 g	5%
<b>Salt</b>	0.14 g	2%	0.1 g	2%
<b>Sodium</b>	50 mg		50 mg	

**Serving Size** 100 g

**Source of Nutritional Information** Calculation from known/accepted datasets

VITAMINS AND  
MINERALS

Nutrient	per 100g	RI per 100g	per 100g serving	RI per 100g serving
<b>Folate/Folic Acid</b>	1 µg	1%	1 µg	1%
<b>Calcium</b>	105 mg	13%	105 mg	13%
<b>Iron</b>	0.1 mg	1%	0.1 mg	1%
<b>Zinc</b>	0.3 mg	3%	0.3 mg	3%

SUPPLEMENTARY  
NUTRITIONAL  
INFORMATION

**Trans Fats per 100 g/ml** 0 g

HFSS (HIGH IN  
FAT, SALT AND  
SUGAR)

**HFSS Status** Yes

HANDLING &  
STORAGE  
INFORMATION

**Directions For Use**

Scoop from frozen

**Storage Instructions**

Always store frozen. Store at -18°C or below. Do not refreeze once defrosted.

**Storage Instructions After Opening**

Scoop from frozen. Do not defrost. Keep frozen until best before end date.

<b>Shelf Life from Time of Production</b>	730 Days	<b>Exempt From Shelf Life Labelling</b>	No
<b>Shelf Life Once Defrosted</b>	0 Days		

ACCREDITATIONS/  
CERTIFICATIONS/  
ASSURANCE  
SCHEMES

<b>BRCGS Certified</b>		<b>BRCGS Food Safety</b>	
<b>Rainforest Alliance</b>		<b>The Vegetarian Society</b>	
<b>Other Accreditation</b>			

ORIGIN

<b>Product Country of Origin/Place of Provenance</b>	United Kingdom
<b>Additional Origin Details</b>	UK

PRODUCT  
CHARACTERISTICS

Standards Testing			
<b>Do you undertake trend analysis of microbiological results?</b>	No	<b>Is shelf life testing undertaken?</b>	No
Physical Standards			

Test	Description	Frequency	Target	Range	Sample (g or ml)
Weight (g)	half hourly weight checks	Every Batch	<1450	1400 to 1500	1450

SUPPLEMENTARY INFORMATION

<b>Milk Type</b>	Cow	<b>Pasteurised</b>	Yes
<b>Fried During Manufacture</b>	No	<b>Closure Type</b>	Lid

ORGANOLEPTICS

<b>Appearance</b>	A pale Pink coloured ice cream in a white pot. There may be evidence of the filling head on the surface of the ice cream.
<b>Aroma</b>	Sweet strawberry with milky notes
<b>Taste</b>	Sweet green strawberry with milky tones
<b>Texture</b>	Smooth without granularity

HAZARD CONTROLS

<b>Metal Detection</b>	Yes	<b>Sieving</b>	Yes
<b>Filters</b>	Yes		

CONFIGURATION

Case Configuration		Inner Pack Configuration	
<b>Total Quantity of Inner Components in Outer Case</b>	6 Units		
<b>Is the Outer Case Splittable?</b>	Yes		

PRODUCT  
WEIGHTS

Inner Component	
<b>Variable Weight Consumer Item</b>	Yes
<b>Inner Component Weight</b>	1.45 kg
<b>Net Drained Weight</b>	1.317 kg
Outer Case	
<b>Outer Case Gross Weight</b>	9.8 kg
<b>Outer Case Net Weight</b>	8.7 kg

PRODUCT DIMENSIONS

Inner Component	
<b>Inner Component Depth</b>	228 mm
<b>Inner Component Width</b>	167 mm
<b>Inner Component Height</b>	153 mm
Outer Case	
<b>Outer Case Depth</b>	493 mm
<b>Outer Case Width</b>	228 mm
<b>Outer Case Height</b>	298 mm

PALLET INFORMATION

<b>Quantity of Cases Per Pallet Layer</b>	10 Cases	<b>Pallet Height</b>	1.7 MTR
<b>Quantity of Layers Per Pallet</b>	5 Layers	<b>Pallet Gross Weight</b>	490 kg
<b>Quantity of Cases Per Pallet</b>	50 Cases		

PACKAGING

Inner Component Packaging

Type	Materials	Weight	Recycled Plastic %	Recyclable	Returnable	Composite
Tub	Plastic / PE (Polyethylene)	130 g	0.00 %	Yes	No	No

Outer Case Packaging

Type	Materials	Weight	Recycled Plastic %	Recyclable	Returnable	Composite
Case	Plastic / PS (Polystyrene)	4 g	0.00 %	No	No	No
Case	Paper/Cardboard / Cardboard	322 g	- %	Yes	No	No

Transport Packaging

Type	Materials	Weight	Recycled Plastic %	Recyclable	Returnable	Composite
Other	Plastic / PS (Polystyrene)	168 g	0.00 %	No	No	No
Other	Paper/Cardboard / Paper	3 g	- %	Yes	No	No
Other	Wood	28000 g	- %	Yes	Yes	

OTHER INFORMATION

<b>Commodity Code</b>	2105001000
-----------------------	------------

CONTACT INFORMATION

<b>ADDRESS</b>	
Caterfood Buying Group	
BFS Group Ltd	
814 Leigh Road	
Slough	
Berkshire	
SL1 4BD	
United Kingdom	

The information on the [Erudus System](#) has been supplied by the manufacturers of the products and, whilst the owners of the Erudus System take steps to ensure the information is regularly updated, they give no warranty and no guarantee that the information is accurate. Product information and ingredients may change, please always read product labels carefully in addition to using the information provided by Erudus.

We do not accept liability for any inaccuracies or incorrect information contained on this site. Please visit <http://www.erudus.com/terms-and-conditions> for full terms and conditions.