

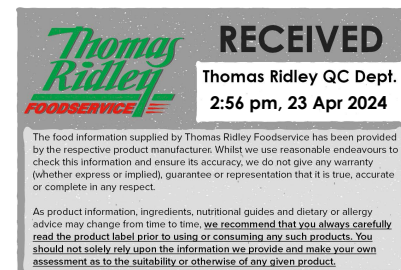
Blossom Honey - 340g

Blossom Honey 6x340g

PRODUCT DESCRIPTION

Blossom Honey - 340g

Brand	Hilltop Honey
Manufacturer Product Code	BHS3
Product Type	Food
Product Category	Preserves and Spreads
Storage Type	Ambient
Erudus ID	d1fa91a8d5ff41b68865b62bb25e69c5
Specification Type	Legacy
Inner Component GTIN	5060298571250
Outer Case GTIN	5060298571366



INGREDIENTS

Ingredient Declaration

Honey

ALLERGENS

Product Contains:

Celery/Celeriac	No	Mustard	No
Cereals Containing Gluten	No	Nuts (Tree)	No
Barley	No	Almond nuts	No
Oats	No	Brazil nuts	No
Rye	No	Cashew nuts	No
Wheat (including Spelt and Khorasan)	No	Hazelnuts	No
Gluten content <20ppm	Yes	Macadamia (Queensland) nuts	No
Crustacea	No	Pecan nuts	No
Eggs	No	Pistachio nuts	No
Fish	No	Walnuts	No
Lupin	No	Peanuts	No
Milk	No	Sesame Seeds	No
Molluscs	No	Soybeans	No
		Sulphur Dioxide and Sulphites	No

Additional Allergen Information

Unsuitable for Infants under 12 months

SUPPLEMENTARY INGREDIENT INFORMATION

Palm Oil	No
Hydrogenated Vegetable Oil/Fat	No
GM Protein/DNA	No

ADDITIVES

Product Contains:

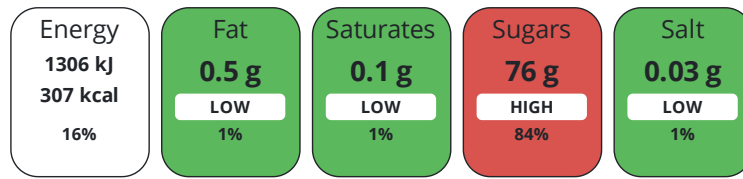
Artificial Antioxidants	No	Artificial Flavourings	No
Artificial Colours	No	Artificial Preservatives	No
Artificial Flavour Enhancers	No	Artificial Sweeteners	No

DIET
SUITABILITY

Suitable for Coeliacs	Yes	Halal Diet	No
Kosher Diet	Suitable for	Vegetarian Diet	Suitable for
Vegan Diet	No		

NUTRITIONAL
INFORMATION

Each 100g/ml portion contains:



of your reference intake.

Typical values per 100g/ml : Energy 307kcal / 1306kJ

Nutrient	per 100g/ml	RI per 100g/ml	per 15g/ml serving	RI per 15g/ml serving
Energy (kJ)	1306 kJ	16%	195.9 kJ	2%
Energy (kcal)	307 kcal	15%	46.1 kcal	2%
Fat	< 0.5 g	1%	0.1 g	0%
of which Saturates	< 0.1 g	1%	-	
Carbohydrate	76 g	29%	11.4 g	4%
of which Sugars	76 g	84%	11.4 g	13%
Fibre	< 0.5 g		0.1 g	
Protein	< 0.5 g	1%	0.1 g	0%
Salt	0.03 g	1%	-	
Serving Size	15 g			

SUPPLEMENTARY
NUTRITIONAL
INFORMATION

HANDLING &
STORAGE
INFORMATION

Directions For Use

N/A - Ready to eat product

Storage Instructions

Store at room temperature. Crystallisation may naturally occur. If this happens, place the bottle in warm water.

Shelf Life from Time of Production 790 Days

ACCREDITATIONS/
CERTIFICATIONS/
ASSURANCE
SCHEMES
ORIGIN

BRCGS Certified

Other Accreditation

Product Country of Origin/Place of Other

Provenance

Additional Origin Details

Blend of Non-EU honeys

Standards Testing

PRODUCT
CHARACTERISTICS

Do you undertake trend analysis of No

Is shelf life testing undertaken? No

microbiological results?

Analytical Standards

Test	Description	Frequency	Target	Range	Sample (g or ml)
Moisture (%)		Every Batch	<20	13 to 20	-

CONFIGURATION	Case Configuration	Inner Pack Configuration					
	Total Quantity of Inner Components in Outer Case	6 Units					
PRODUCT WEIGHTS	Inner Component						
	Variable Weight Consumer Item	No					
	Inner Component Weight	340 g					
	Weight/Volume	340g					
	Outer Case						
PRODUCT DIMENSIONS	Outer Case Gross Weight	2.5 kg					
	Outer Case Net Weight	2.04 kg					
	Inner Component						
	Inner Component Depth	40 mm					
	Inner Component Width	75 mm					
	Inner Component Height	140 mm					
	Outer Case						
	Outer Case Depth	265 mm					
	Outer Case Width	85 mm					
	Outer Case Height	140 mm					
PALLET INFORMATION	Quantity of Cases Per Pallet Layer	53 Cases	Pallet Height	1.4 MTR			
	Quantity of Layers Per Pallet	9 Layers	Pallet Gross Weight	1210 kg			
	Quantity of Cases Per Pallet	477 Cases					
PACKAGING	Inner Component Packaging						
	Type	Materials	Weight	Recycled Plastic %	Recyclable	Returnable	Composite
	Bottle	Plastic	28 g	30.00 %			
	Bottle	Paper/Cardboard	1 g	- %			
	Outer Case Packaging						
	Type	Materials	Weight	Recycled Plastic %	Recyclable	Returnable	Composite
	Case	Plastic	90 g	- %			
	Case	Paper/Cardboard	35 g	- %			
	OTHER INFORMATION CONTACT INFORMATION	Address	Technical Contact				
		Hilltop Honey	Technical				
Unit A Vastre Industrial Estate		Technical Administrator					
Newtown		technical@lovehilltop.com					
Powys							
SY16 1DZ							
Wales							
	P: (Phone)	01686 689027					

The information on the [Erudus System](#) has been supplied by the manufacturers of the products and, whilst the owners of the Erudus System take steps to ensure the information is regularly updated, they give no warranty and no guarantee that the information is accurate. Product information and ingredients may change, please always read product labels carefully in addition to using the information provided by Erudus.

We do not accept liability for any inaccuracies or incorrect information contained on this site.
Please visit <http://www.erudus.com/terms-and-conditions> for full terms and conditions.