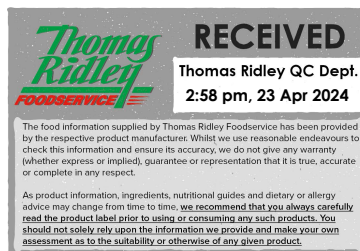


Blossom Honey Squeezy Bottle- 1.36kg

Blossom Honey 4x

PRODUCT DESCRIPTION

Blossom Honey in a squeezy bottle - 1.36kg



Brand	Hilltop Honey
Manufacturer Product Code	BHS1X4
Product Type	Food
Product Category	Preserves and Spreads
Storage Type	Ambient
Erudus ID	4eab9c982d074230ac1ab259628a6dbc
Specification Type	Legacy



Inner Component GTIN	5060298573155
Outer Case GTIN	5060298573162



INGREDIENTS

Ingredient Declaration

Honey

ALLERGENS

Product Contains:

Celery/Celeriac	No	Mustard	No
Cereals Containing Gluten	No	Nuts (Tree)	No
Barley	No	Almond nuts	No
Oats	No	Brazil nuts	No
Rye	No	Cashew nuts	No
Wheat (including Spelt and Khorasan)	No	Hazelnuts	No
Gluten content <20ppm	Yes	Macadamia (Queensland) nuts	No
Crustacea	No	Pecan nuts	No
Eggs	No	Pistachio nuts	No
Fish	No	Walnuts	No
Lupin	No	Peanuts	No
Milk	No	Sesame Seeds	No
Molluscs	No	Soybeans	No
		Sulphur Dioxide and Sulphites	No

Additional Allergen Information

Unsuitable for Infants under 12 months

SUPPLEMENTARY INGREDIENT INFORMATION

Palm Oil	No
Hydrogenated Vegetable Oil/Fat	No
GM Protein/DNA	No

ADDITIVES

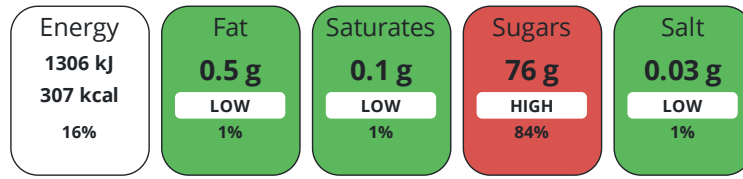
Product Contains:

Artificial Antioxidants	No	Artificial Flavourings	No
Artificial Colours	No	Artificial Preservatives	No
Artificial Flavour Enhancers	No	Artificial Sweeteners	No
Suitable for Coeliacs	Yes	Halal Diet	No
Kosher Diet	Suitable for	Vegetarian Diet	Suitable for
Vegan Diet	No		

DIET SUITABILITY

NUTRITIONAL INFORMATION

Each 100g/ml portion contains:



of your reference intake.

Typical values per 100g/ml : Energy 307kcal / 1306kJ

Nutrient	per 100g/ml	RI per 100g/ml	per 15g/ml serving	RI per 15g/ml serving
Energy (kJ)	1306 kJ	16%	195.9 kJ	2%
Energy (kcal)	307 kcal	15%	46.1 kcal	2%
Fat	< 0.5 g	1%	0.1 g	0%
of which Saturates	< 0.1 g	1%	-	
Carbohydrate	76 g	29%	11.4 g	4%
of which Sugars	76 g	84%	11.4 g	13%
Fibre	< 0.5 g		0.1 g	
Protein	< 0.5 g	1%	0.1 g	0%
Salt	0.03 g	1%	-	
Serving Size	15 g			

SUPPLEMENTARY NUTRITIONAL INFORMATION

HFSS (HIGH IN FAT, SALT AND SUGAR)

HFSS Status	Yes
--------------------	-----

HANDLING & STORAGE INFORMATION

Directions For Use	N/A
---------------------------	-----

Storage Instructions

Store at room temperature, away from direct sunlight and strong odours. Crystallisation may naturally occur. If this happens, place the bottle in warm water.

Shelf Life from Time of Production	790 Days
---	----------

ACCREDITATIONS/ CERTIFICATIONS/ ASSURANCE SCHEMES ORIGIN

BRCGS Certified		Other Accreditation	
------------------------	--	----------------------------	--

Product Country of Origin/Place of Provenance	Other
--	-------

Additional Origin Details	Blend of Non-EU honeys
----------------------------------	------------------------

PRODUCT CHARACTERISTICS

Standards Testing

Do you undertake trend analysis of microbiological results? No

Is shelf life testing undertaken? No

Analytical Standards

Test	Description	Frequency	Target	Range	Sample (g or ml)
Moisture (%)		Every Batch	<20	13 to 20	-

CONFIGURATION

Case Configuration

Inner Pack Configuration

Total Quantity of Inner Components in Outer Case 4 Units

Is the Outer Case Splittable? Yes

PRODUCT WEIGHTS

Inner Component

Variable Weight Consumer Item Weight/Volume No
1.36kg

Outer Case

Outer Case Gross Weight 2.16 kg

Outer Case Net Weight 1.36 kg

PRODUCT DIMENSIONS

Inner Component

Inner Component Depth 135 mm

Inner Component Width 135 mm

Inner Component Height 131 mm

Outer Case

Outer Case Depth 150 mm

Outer Case Width 200 mm

Outer Case Height 200 mm

PALLET INFORMATION

Quantity of Cases Per Pallet Layer 26 Cases

Pallet Height 1.5 MTR

Quantity of Layers Per Pallet 6 Layers

Quantity of Cases Per Pallet 156 Cases

PACKAGING

Inner Component Packaging

Type	Materials	Weight	Recycled Plastic %	Recyclable	Returnable	Composite
Bottle	Plastic	46 g	30.00 %			
Bottle	Paper/Cardboard	1 g	- %			

Outer Case Packaging

Type	Materials	Weight	Recycled Plastic %	Recyclable	Returnable	Composite
Case	Paper/Cardboard	236 g	- %			

OTHER INFORMATION

CONTACT
INFORMATION

Address

Hilltop Honey
Unit A Vastre Industrial Estate
Newtown
Powys
SY16 1DZ
Wales

P: (Phone) 01686 689027

Technical Contact

Technical
Technical Administrator
technical@lovehilltop.com

The information on the [Erudus System](#) has been supplied by the manufacturers of the products and, whilst the owners of the Erudus System take steps to ensure the information is regularly updated, they give no warranty and no guarantee that the information is accurate. Product information and ingredients may change, please always read product labels carefully in addition to using the information provided by Erudus.

We do not accept liability for any inaccuracies or incorrect information contained on this site.
Please visit <http://www.erudus.com/terms-and-conditions> for full terms and conditions.