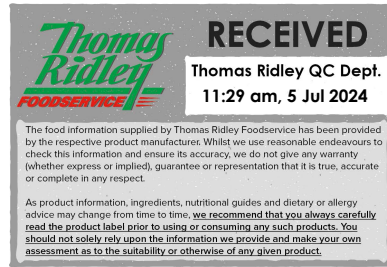


Changed Jul 05, 2024 08:49

Reviewed Jul 05, 2024 08:49

Erudus ID abdaaac23937467191a312b7aa70e378

Version 3.0



12357

# Caramel Apple Crumble Pie (1 x 14)

Caramel Apple Crumble Pie (1 X 14) 1x2255g

## PRODUCT DESCRIPTION

Crisp Cinnamon Pastry filled with a creamy Apple Filling, topped with a rich Caramel Sauce and finished with a crunchy Cinnamon Crumble

|                           |                                  |
|---------------------------|----------------------------------|
| Brand                     | Mademoiselle Desserts (Taunton)  |
| Manufacturer Product Code | F26730                           |
| Product Type              | Food                             |
| Product Category          | Desserts                         |
| Storage Type              | Frozen                           |
| Erudus ID                 | abdaaac23937467191a312b7aa70e378 |
| Specification Type        | Bakery Products                  |

Outer Case GTIN 5060069387110



## INGREDIENTS

### Ingredient Declaration

Bramley Apple Slices (22%) (Bramley Apples, Preservative: Ascorbic Acid.), Wheat Flour (WHEAT Flour, Calcium Carbonate, Iron, Niacin, Thiamin), Toffee Sauce (11%) (Glucose Syrup, Invert Sugar Syrup, Sweetened Condensed MILK, Sugar, Butter Oil (MILK), Water, Colour: Plain Caramel. Stabiliser: Pectins. Natural Flavouring), Margarine (Palm Oil, Rapeseed Oil, Water, Flavouring), Sugar, Powdered Fondant (Sugar, Dried Glucose Syrup), Water, Single Cream (MILK), Shortening (Palm Oil, Rapeseed Oil), Brown Sugar (Sugar, Cane Molasses), Free Range EGG, Full Cream MILK Powder, Invert Sugar Syrup, Modified Maize Starch, Dextrose Monohydrate, Natural Vanilla Flavouring, Natural Flavouring, Salt, Caramelised Sugar Syrup, Pastry Stabiliser (Wheat Flour (WHEAT Flour, Calcium Carbonate, Niacin, Iron, Thiamin), Flour Treatment Agent: L- Cysteine.), Ground Cassia, Stabilisers: Xanthan Gum, Locust Bean Gum, Guar Gum.

## ALLERGENS

Product Contains:

|   |             |                                      |             |
|---|-------------|--------------------------------------|-------------|
| <b>Celery/Celeriac</b>                      | No          | <b>Mustard</b>                       | No          |
| <b>Cereals Containing Gluten</b>            | Yes         | <b>Nuts (Tree)</b>                   | May Contain |
| <b>Barley</b>                               | May Contain | <b>Almond nuts</b>                   | May Contain |
| <b>Oats</b>                                 | May Contain | <b>Brazil nuts</b>                   | No          |
| <b>Rye</b>                                  | No          | <b>Cashew nuts</b>                   | No          |
| <b>Wheat (including Spelt and Khorasan)</b> | Yes         | <b>Hazelnuts</b>                     | May Contain |
| <b>Crustacea</b>                            | No          | <b>Macadamia (Queensland) nuts</b>   | No          |
| <b>Eggs</b>                                 | Yes         | <b>Pecan nuts</b>                    | May Contain |
| <b>Fish</b>                                 | No          | <b>Pistachio nuts</b>                | May Contain |
| <b>Lupin</b>                                | No          | <b>Walnuts</b>                       | May Contain |
| <b>Milk</b>                                 | Yes         | <b>Peanuts</b>                       | No          |
| <b>Molluscs</b>                             | No          | <b>Sesame Seeds</b>                  | No          |
|   |             | <b>Soybeans</b>                      | May Contain |
|   |             | <b>Sulphur Dioxide and Sulphites</b> | No          |

Risk Source:

SUPPLEMENTARY  
INGREDIENT  
INFORMATION

|                                       |     |
|---------------------------------------|-----|
| <b>Palm Oil</b>                       | Yes |
| <b>Hydrogenated Vegetable Oil/Fat</b> | No  |
| <b>GM Protein/DNA</b>                 | No  |

ADDITIVES

*Product Contains:*

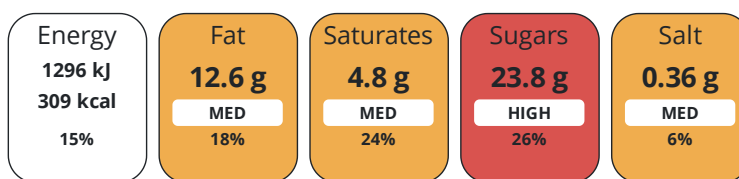
|                                     |     |                                 |    |
|-------------------------------------|-----|---------------------------------|----|
| <b>Artificial Antioxidants</b>      | No  | <b>Artificial Flavourings</b>   | No |
| <b>Artificial Colours</b>           | Yes | <b>Artificial Preservatives</b> | No |
| <b>Artificial Flavour Enhancers</b> | No  | <b>Artificial Sweeteners</b>    | No |

DIET  
SUITABILITY

|                   |    |                        |              |
|-------------------|----|------------------------|--------------|
| <b>Vegan Diet</b> | No | <b>Vegetarian Diet</b> | Suitable for |
| <b>Halal Diet</b> | No | <b>Kosher Diet</b>     | No           |

NUTRITIONAL  
INFORMATION

Each 100g/ml portion contains:



of your reference intake.

Typical values per 100g/ml : Energy 309kcal / 1296kJ

| Nutrient                  | per 100g | RI per 100g | per 161g serving | RI per 161g serving |
|---------------------------|----------|-------------|------------------|---------------------|
| <b>Energy (kJ)</b>        | 1296 kJ  | 15%         | 2086.6 kJ        | 25%                 |
| <b>Energy (kcal)</b>      | 309 kcal | 15%         | 497.5 kcal       | 25%                 |
| <b>Fat</b>                | 12.6 g   | 18%         | 20.3 g           | 29%                 |
| <b>of which Saturates</b> | 4.8 g    | 24%         | 7.7 g            | 39%                 |
| <b>Carbohydrate</b>       | 45.1 g   | 17%         | 72.6 g           | 28%                 |
| <b>of which Sugars</b>    | 23.8 g   | 26%         | 38.3 g           | 43%                 |
| <b>of which Starch</b>    | 15.4 g   |             | 24.8 g           |                     |
| <b>Fibre</b>              | 1.5 g    |             | 2.4 g            |                     |
| <b>Protein</b>            | 3 g      | 6%          | 4.8 g            | 10%                 |
| <b>Salt</b>               | 0.36 g   | 6%          | 0.6 g            | 10%                 |
| <b>Sodium</b>             | 143 mg   |             | 230.2 mg         |                     |
| <b>Serving Size</b>       | 161 g    |             |                  |                     |

SUPPLEMENTARY  
NUTRITIONAL  
INFORMATION

HFSS (HIGH IN  
FAT, SALT AND  
SUGAR)  
HANDLING &  
STORAGE  
INFORMATION

|                    |     |
|--------------------|-----|
| <b>HFSS Status</b> | Yes |
|--------------------|-----|

**Directions For Use**

For Best Results - allow the product to defrost overnight in the fridge, for best results remove all packaging before defrosting. Once defrosted store at <5°C and consume within 48 hours.

**Storage Instructions**

Store Frozen at -18°C - Once Defrosted Store at 0-5°C

|   |          |
|---|----------|
| <b>Shelf Life from Time of Production</b> | 547 Days |
|---|----------|

ACCREDITATIONS/  
CERTIFICATIONS/  
ASSURANCE  
SCHEMES  
ORIGIN

**BRCGS Certified**

**Roundtable of Sustainable Palm Oil (RSPO)**

**Product Country of Origin/Place of** United Kingdom

**Provenance**

PRODUCT  
CHARACTERISTICS

Standards Testing

**Do you undertake trend analysis of microbiological results?** No

**Is shelf life testing undertaken?** No

Microbiological Standards

| Organism                               | Description | Frequency | Target | Maximum | Sample (g or ml) |
|--|-------------|-----------|--------|---------|------------------|
| Bacillus Cereus (cfu/g or ml)          |             | Annually  | <20    | 20      | 100              |
| E. Coli (cfu/g or ml)                  |             | Annually  | <10    | 10      | 100              |
| Enterobacteriaceae (cfu/g or ml)       |             | Annually  | <50    | 50      | 100              |
| Listeria SPP (cfu/g or ml)             |             | Annually  | <0     | 0       | 100              |
| Listeria Monocytogenes (cfu/g or ml)   |             | Annually  | <0     | 0       | 100              |
| Staphylococcus Aureus (cfu/g or ml)    |             | Annually  | <20    | 20      | 100              |
| Total Viable Count (TVC) (cfu/g or ml) |             | Annually  | <1000  | 10000   | 100              |
| Salmonella (cfu/g or ml)               |             | Annually  | <0     | 0       | 100              |
| Yeast (cfu/g or ml)                    |             | Annually  | <1000  | 1000    | 100              |
| Moulds (cfu/g or ml)                   |             | Annually  | <1000  | 1000    | 100              |

CONFIGURATION

Case Configuration

Inner Pack Configuration

**Total Quantity of Inner Components in Outer Case** 1 Units

**Is the Outer Case Splittable?** No

PRODUCT  
WEIGHTS

Inner Component

**Variable Weight Consumer Item** No

**Inner Component Weight** 2255 g

Outer Case

**Outer Case Gross Weight** 2.46 kg

**Outer Case Net Weight** 2.26 kg

PRODUCT  
DIMENSIONS

Inner Component

**Inner Component Depth** 250 mm

**Inner Component Width** 250 mm

**Inner Component Height** 40 mm

Outer Case

**Outer Case Depth** 284 mm

**Outer Case Width** 281 mm

**Outer Case Height** 54 mm

PALLET  
INFORMATION

**Quantity of Cases Per Pallet Layer** 12 Cases

**Pallet Height** 1.23 MTR

**Quantity of Layers Per Pallet** 20 Layers

**Pallet Gross Weight** 618.64 kg

**Quantity of Cases Per Pallet** 240 Cases

PACKAGING

Inner Component Packaging

| Type | Materials       | Weight | Recycled Plastic % | Recyclable | Returnable | Composite |
|------|-----------------|--------|--------------------|------------|------------|-----------|
| Bag  | Plastic         | 4 g    | 0.00 %             |            |            |           |
| Bag  | Paper/Cardboard | 58 g   | - %                |            |            |           |

Outer Case Packaging

| Type | Materials       | Weight | Recycled Plastic % | Recyclable | Returnable | Composite |
|------|-----------------|--------|--------------------|------------|------------|-----------|
| Case | Plastic         | 5 g    | 0.00 %             |            |            |           |
| Case | Paper/Cardboard | 149 g  | - %                |            |            |           |

Transport Packaging

| Type  | Materials       | Weight  | Recycled Plastic % | Recyclable | Returnable | Composite |
|-------|-----------------|---------|--------------------|------------|------------|-----------|
| Other | Paper/Cardboard | 5 g     | - %                |            |            |           |
| Other | Wood            | 28000 g | - %                |            |            |           |

OTHER INFORMATION CONTACT INFORMATION

Address

Mademoiselle Desserts (Taunton)  
 Frobisher Way  
 Bindon Road  
 Taunton  
 Somerset  
 TA2 6AB  
 England

P: (Phone) 01823 257922

Complaints Contact

David Moran  
 Technical Manager  
 d.moran@mdesserts.com

P: (Phone) 01823 257922

Technical Contact

David Moran  
 Technical Manager  
 d.moran@mdesserts.com

P: (Phone) 01823 257922

Commercial Contact

Clare Harrison  
 National Account Manager  
 c.harrison@mdesserts.com

P: (Phone) 01823 257922

The information on the [Erudus System](#) has been supplied by the manufacturers of the products and, whilst the owners of the Erudus System take steps to ensure the information is regularly updated, they give no warranty and no guarantee that the information is accurate. Product information and ingredients may change, please always read product labels carefully in addition to using the information provided by Erudus.

We do not accept liability for any inaccuracies or incorrect information contained on this site. Please visit <http://www.erudus.com/terms-and-conditions> for full terms and conditions.