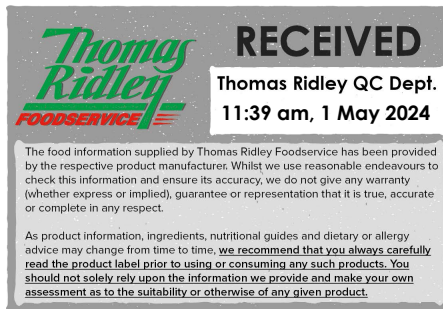


**Changed** Feb 12, 2024 17:51  
**Reviewed** Feb 12, 2024 17:51  
**Erudus ID** 5d599816cb2a482699e6dd573712a36d  
**Version** 2.0



# JUICEBURST™ 400ml ORANGE

Orange Juice Drink From Concentrate 12x

## PRODUCT DESCRIPTION

Orange Juice Drink from Concentrate

<b>Brand</b>	Purity Soft Drinks Ltd
<b>Manufacturer Product Code</b>	JBURSTORG400ML
<b>Product Type</b>	Drink
<b>Product Category</b>	Juices and Cordials
<b>Storage Type</b>	Ambient
<b>Erudus ID</b>	5d599816cb2a482699e6dd573712a36d
<b>Specification Type</b>	Drinks
<b>Inner Component GTIN</b>	5038512002637
<b>Outer Case GTIN</b>	05038512002644



## INGREDIENTS

### Ingredient Declaration

Orange juice from concentrate (92%), water, natural flavouring.

## ALLERGENS

Product Contains:

<b>Celery/Celeriac</b>	No
<b>Cereals Containing Gluten</b>	No
<b>Barley</b>	No
<b>Oats</b>	No
<b>Rye</b>	No
<b>Wheat (including Spelt and Khorasan)</b>	No
<b>Crustacea</b>	No
<b>Eggs</b>	No
<b>Fish</b>	No
<b>Lupin</b>	No
<b>Milk</b>	No
<b>Molluscs</b>	No
<b>Mustard</b>	No
<b>Nuts (Tree)</b>	No
<b>Almond nuts</b>	No
<b>Brazil nuts</b>	No
<b>Cashew nuts</b>	No
<b>Hazelnuts</b>	No
<b>Macadamia (Queensland) nuts</b>	No
<b>Pecan nuts</b>	No
<b>Pistachio nuts</b>	No
<b>Walnuts</b>	No
<b>Peanuts</b>	No
<b>Sesame Seeds</b>	No
<b>Soybeans</b>	No
<b>Sulphur Dioxide and Sulphites</b>	No

SUPPLEMENTARY INGREDIENT INFORMATION

<b>Palm Oil</b>	No
<b>Hydrogenated Vegetable Oil/Fat</b>	No
<b>GM Protein/DNA</b>	No

ADDITIVES

Product Contains:

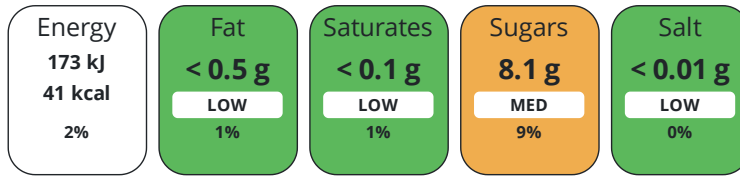
<b>Artificial Antioxidants</b>	No
<b>Artificial Colours</b>	No
<b>Artificial Flavour Enhancers</b>	No
<b>Artificial Flavourings</b>	No
<b>Artificial Preservatives</b>	No
<b>Artificial Sweeteners</b>	No

DIET SUITABILITY

<b>Vegan Diet</b>	Suitable for	<b>Vegetarian Diet</b>	Suitable for
<b>Halal Diet</b>	No	<b>Kosher Diet</b>	No

NUTRITIONAL INFORMATION

Each 100g/ml portion contains:



of your reference intake.

Typical values per 100g/ml : Energy 41kcal / 173kj

Nutrient	per 100ml	RI per 100ml
Energy (kJ)	173 kJ	2%
Energy (kcal)	41 kcal	2%
Fat	< 0.5 g	1%
of which Saturates	< 0.1 g	1%
Carbohydrate	8.3 g	3%
of which Sugars	8.1 g	9%
Fibre	< 0.5 g	
Protein	0.7 g	1%
Salt	< 0.01 g	0%

SUPPLEMENTARY NUTRITIONAL INFORMATION

HANDLING & STORAGE INFORMATION

Directions For Use

Oral consumption

Storage Instructions

Store in cool dry conditions away from strong light sources. Best served chilled and shake well before use. Once opened keep in the fridge and consume within 3 days.

Shelf Life from Time of Production	210 Days
Exempt From Shelf Life Labelling	No

ACCREDITATIONS/ CERTIFICATIONS/ ASSURANCE SCHEMES

BRCGS Certified	Other Accreditation
-----------------	---------------------

ORIGIN

Product Country of Origin/Place of Provenance: Not Specified

Provenance

Additional Origin Details

Bottled in UK.

PRODUCT CHARACTERISTICS

Standards Testing

Do you undertake trend analysis of microbiological results?	Yes
Is shelf life testing undertaken?	Yes

Microbiological Standards

Organism	Description	Frequency	Target	Maximum	Sample (g or ml)
Total Viable Count (TVC) (cfu/g or ml)		Every Batch	<1	0	5
Yeast (cfu/g or ml)		Every Batch	<1	0	5
Moulds (cfu/g or ml)		Every Batch	<1	0	5

Analytical Standards

Test	Description	Frequency	Target	Range	Sample (g or ml)
Acidity (%)		Every Batch	=0.75	0.64 to 0.92	10
Brix (°Bx)		Every Batch	=10.1	10.1 to 10.3	1
pH		Every Batch	<4	0 to 4	400

CONFIGURATION  
Case Configuration

<b>Total Quantity of Inner Components in Outer Case</b>	12 Units
---------------------------------------------------------	----------

<b>Is the Outer Case Splittable?</b>	Yes
--------------------------------------	-----

Inner Pack Configuration

PRODUCT WEIGHTS

Inner Component

Outer Case

<b>Outer Case Gross Weight</b>	5.3 kg
--------------------------------	--------

<b>Outer Case Net Weight</b>	4.91 kg
------------------------------	---------

PRODUCT DIMENSIONS

Inner Component

<b>Inner Component Depth</b>	187 mm
------------------------------	--------

<b>Inner Component Width</b>	60 mm
------------------------------	-------

<b>Inner Component Height</b>	60 mm
-------------------------------	-------

Outer Case

<b>Outer Case Depth</b>	187 mm
-------------------------	--------

<b>Outer Case Width</b>	60 mm
-------------------------	-------

<b>Outer Case Height</b>	60 mm
--------------------------	-------

PALLET INFORMATION

<b>Quantity of Cases Per Pallet Layer</b>	26 Cases
-------------------------------------------	----------

<b>Quantity of Layers Per Pallet</b>	6 Layers
--------------------------------------	----------

<b>Quantity of Cases Per Pallet</b>	156 Cases
-------------------------------------	-----------

<b>Pallet Height</b>	1.28 MTR
----------------------	----------

<b>Pallet Gross Weight</b>	860 kg
----------------------------	--------

PACKAGING

Inner Component Packaging

Type	Materials	Weight	Recycled Plastic %	Recyclable	Returnable	Composite
Bottle	Plastic	24.3 g	- %			

Outer Case Packaging

Type	Materials	Weight	Recycled Plastic %	Recyclable	Returnable	Composite
Case	Plastic	18 g	- %			
Case	Paper/Cardboard	1 g	- %			

Transport Packaging

Type	Materials	Weight	Recycled Plastic %	Recyclable	Returnable	Composite
Other	Plastic	500 g	- %		Yes	
Other	Paper/Cardboard	1000 g	- %		Yes	
Other	Wood	35000 g	- %		Yes	

## OTHER INFORMATION

### Manufacturer Comments

1 bottle provides 1 of your 5 daily portions of fruit and vegetables No Added Sugar (Contains naturally occurring sugars) No artificial colours, flavours, sweeteners or preservatives Made in UK

### CONTACT INFORMATION

#### Address

Purity Soft Drinks Ltd  
Douglas House  
Mounts Road  
Wednesbury  
West Midlands  
WS10 0BU  
England

P: (Phone) 01215057585

The information on the [Erudus System](#) has been supplied by the manufacturers of the products and, whilst the owners of the Erudus System take steps to ensure the information is regularly updated, they give no warranty and no guarantee that the information is accurate. Product information and ingredients may change, please always read product labels carefully in addition to using the information provided by Erudus.

We do not accept liability for any inaccuracies or incorrect information contained on this site.  
Please visit <http://www.erudus.com/terms-and-conditions> for full terms and conditions.