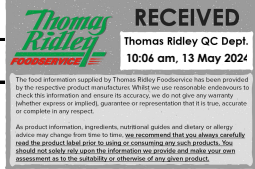


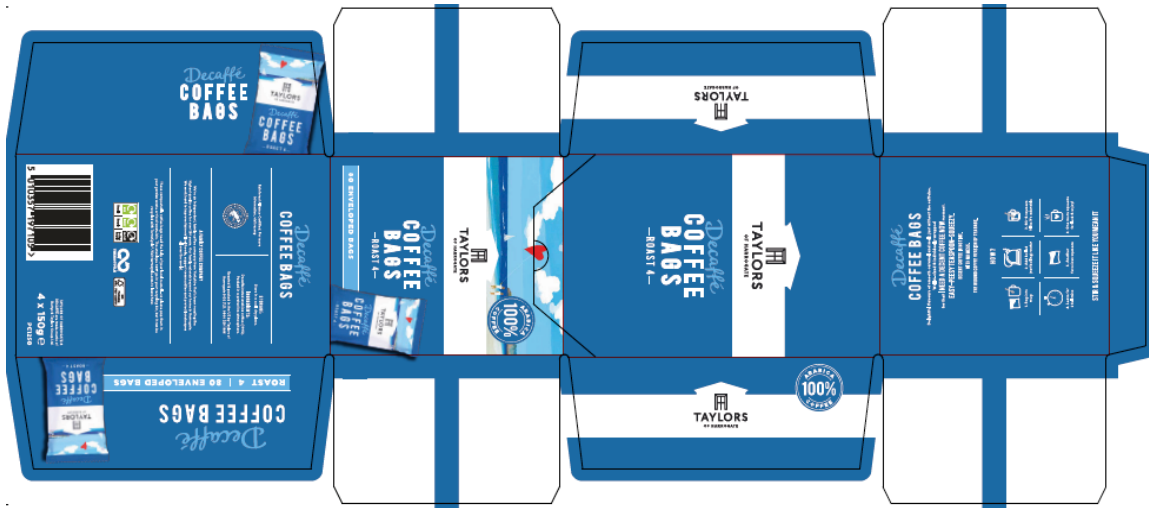
Taylor's of Harrogate Finished Product Specification



Product Name	TOH Decaffe Coffee Bags Roast
Description of Product	TOH Decaffe Coffee Bags
Case Format	1 x 80 Envelopes
Supplier Product Code	6260

Supplier/ Manufacturer Contact Details	
Supplier Name	Taylor's of Harrogate
Address	Pagoda House, Plumpton Park, Harrogate North Yorkshire, England, HG2 7LD
Telephone	01423 814000
Fax	01423 814001

Finished Product



Legal Product Name
Decaffeinated ground coffee

Ingredients			
Ingredient	% In Final Product	Rank	Origin (each raw material)
Decaffeinated arabica coffee	100%	1	Multiple origins

Legal Ingredient Declaration (in descending order of weight)
Decaffeinated arabica coffee (100%)

Roasted & packed in the UK by Taylor's of Harrogate, Plumpton Park, Harrogate, HG2 7LD. UK

No nutritional claims are made

Shelf Life	
Shelf Life	12 Months
Min shelf life upon delivery	6 Months
Max shelf life upon delivery	12 Months

Brewing Instructions
<p>HOW TO BREW</p> <ol style="list-style-type: none"> 1. Bag into mug 2. Add boiled (not boiling) water 3. Stir & squeeze like you mean it 4. Leave for 2 full mins 5. Another ferocious squeeze 6. One more squeeze for luck, remove & enjoy!

Packaging Details			
Barcode (Inner Sleeve)	N/A		
Inner Sleeve Dimensions	Length	Width	Height
	128 mm	82 mm	188 mm
Barcode (Case)	05010357 197 105		
Outer Case Dimensions	Length	Width	Height
	262 mm	168 mm	195 mm
Units per case	1		
Case Net Weight	600 g		

Allergen Information		
Allergens	Yes	No
Cereals containing gluten (wheat, rye,barley, oats, spelt, kamut or their hybridised strains)		X
Crustaceans (crab, lobster, crayfish, shrimp, prawn)		X
Eggs		X
Milk		X
Fish		X
Peanuts		X
Soyabeans		X
Tree nuts (almonds, hazelnuts, walnuts, cashew nuts, pecans, brazil, pistachios and macadamia nuts)		X
Celery		X
Mustard		X
Sesame Seeds		X
Sulphur dioxide and sulphates at concentrations of over 10ppm (parts per million)		X
Lupin		X
Molluscs		X

Metal Detection

Metal Type	Ferrous	Non ferrous	Stainless
Sensitivity	3.5mm	N/A	N/A
Frequency of Check	At start of production, at 30 minute intervals, at end of production.		

Weight Checks

Product Weight	600	g
T1 tolerance value (for average weight)	599	g
T2 tolerance value (for average weight)	598.5	g

Packed in compliance with Average Weight Legislation

Packed in a protective atmosphere.

Storage Condition

Storage temperature	Ambient
Storage conditions	Store in a cool, dry place.
Storage once opened	N/A

Date Mark/ Lot Coding

Date Marking (Best Before End)	Best Before End
Shelf Life	12 Months
BBE Position	Case Label
BBE Format	MM/YYYY e.g. 10/2017
Production code/ Julian code Format (printed on box/bag)	1061 1=Year 061=Day of year

No part of this specification may be altered without prior agreement by Taylors of Harrogate.

Product specification contents are confidential to Taylors and the supplier and must not be disclosed to any third party without agreement.

This product must comply with all UK/EEC food and packaging legislation.