



PRODUCT SPECIFICATION

Beef Mince



RECEIVED

Thomas Ridley QC Dept.
12:39 pm, 13 May 2024

The food information supplied by Thomas Ridley Foodservice has been provided by the respective product manufacturer. Whilst we use reasonable endeavours to check this information and ensure its accuracy, we do not give any warranty (whether express or implied), guarantee or representation that it is true, accurate or complete in any respect.

As product information, ingredients, nutritional guides and dietary or allergy advice may change from time to time, we recommend that you always carefully read the product label prior to using or consuming any such products. You should not solely rely upon the information we provide and make your own assessment as to the suitability or otherwise of any given product.

PRODUCT CODE:	PRODUCT NAME:
5838	Minced Beef (Standard) 500g
5839	Minced Beef (Standard) 1kg
5725	Minced Beef (Standard) 2.5kg
5837	Minced Beef (Standard) 5kg

MANUFACTURER NAME & ADDRESS:	PEPPERELL'S MEATS LTD UNIT 1, THE FIRS REDENHALL, HARLESTON NORFOLK IP20 9QN
TEL:	01379 852590
EMAIL:	sales@pepperellsmcats.co.uk
EC LICENSE:	GB 2641

LABEL:



TEL: 01359
270 536



Minced Beef (Standard)



Batch Number P07824000209
Born in United Kingdom
Reared in United Kingdom
Slaughtered in UK5207
Cut in UK5207

Use By	Weight
12-05-24	H 2.500 kg

Suitable for home freezing. Freeze on day by process. Thawout thoroughly before cooking. May contain Bones.

Once opened use within 24 hours of opening. Store Below 4°c

Butchered & Packed by Pepperell's Meats Ltd IP20 9QN



Date of Issue: April 2024

Description:

Beef minced into thin strands – red/ brown in colour.

Ingredients Declaration:

100% Beef

Use By Date:

As per pack label date.

Shelf Life & Storage:

FRESH: 5 days from production

Must be kept at 4°C and below. Use within 24 hours of opening.

Country of Origin:

United Kingdom / Ireland

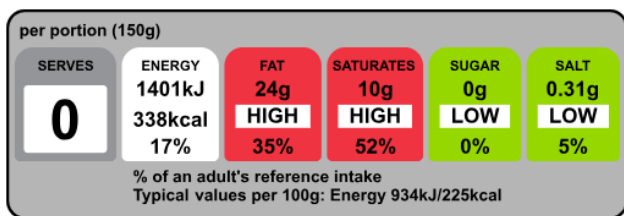
Product Weight/Configuration:

Sold by multiple of Grams/ Kilograms as per customer order.

Packaging:

Vacuum Packed

Nutritional Information:



Typical values	per 100g	per 150g serving
Energy	934kJ 225kcal	1401kJ 338kcal
Fat	16g	24g
of which saturates	6.9g	10g
Carbohydrate	0.0g	0.0g
of which sugars	0.0g	0.0g
Protein	20g	30g
Salt	0.20g	0.31g



PEPPERELL'S MEATS LTD, UNIT 1, THE FIRS, REDENHALL, HARLESTON, NORFOLK IP20 9QN

ALLERGY INFORMATION:

INGREDIENT:	YES/NO
FREE FROM CEREAL / CEREAL DERIVATIVES	Y
FREE FROM SOYA / SOYA DERIVATIVES	Y
FREE FROM SESAME SEEDS	Y
FREE FROM EGG / EGG PRODUCTS	Y
FREE FROM MILK / DAIRY PRODUCTS	Y
FREE FROM MEAT / MEAT PRODUCTS	N
FREE FROM GELATINE	Y
FREE FROM HYDROLYSED VEGETABLES PROTEINS	Y
FREE FROM ARTIFICIAL FLAVOURS	Y
FREE FROM ARTIFICIAL COLOURS / AZO DYES	Y
FREE FROM NATURAL AND N.I COLOURS	Y
FREE FROM FISH AND THEIR DERIVATIVES	Y
FREE FROM CRUSTACEANS	Y
FREE FROM MOLLUSCS	Y
FREE FROM PRESERVATIVES	Y
FREE FROM ADDITIVES	Y
FREE FROM BENZOATES	Y
FREE FROM MSG AND GLUTAMATES	Y
FREE FROM GLUTEN	Y
FREE FROM GROUND NUTS AND THEIR DERIVATIVES	Y
FREE FROM TREE NUTS AND THEIR DERIVATIVES	Y
FREE FROM MUSTARDS	Y
FREE FROM CELERY	Y
FREE FROM CELERIAC	Y
FREE FROM SULPHUR DIOXIDE AND SULPHITES	Y
FREE FROM LUPIN	Y

SUITABLE FOR:	YES/NO
NUT ALLERGY SUFFERERS	Y
VEGETARIANS	N
VEGANS	N
COELIACS	Y
LACTOSE INTOLERANTS	Y
SESAME ALLERGY SUFFERERS	Y

* PLEASE NOTE ALL GLUTEN FREE PRODUCTS HAVE BEEN MADE IN A FACTORY CONTAINING GLUTEN *

FOR AND ON BEHALF OF: - PEPPERELLS MEATS LTD			
NAME	POSITION HELD	SIGNATURE	DATE
Christopher Pepperell	Managing Director	<i>cc pepperell</i>	12/04/2024
FOR CUSTOMER: - THOMAS RIDLEY FOODSERVICE			
NAME	POSITION HELD	SIGNATURE	DATE