

Changed Jan 19, 2023 14:07

Erudus ID b930f80821f2495cadad52c9f6e65913

Version 1.0



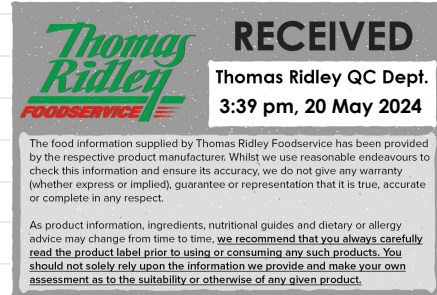
MINI SULTANA SCONES (40 x 25g)

Mini Sultana Scones 40x

PRODUCT DESCRIPTION

Individually baked sultana scones

| | |
|---------------------------|----------------------------------|
| Brand | The Handmade Cake Co. |
| Manufacturer Product Code | F071065 |
| Product Type | Food |
| Product Category | Bakery - General |
| Storage Type | Frozen |
| Erudus ID | b930f80821f2495cadad52c9f6e65913 |
| Specification Type | Legacy |
| Outer Case GTIN | 5060044071065 |



INGREDIENTS

Ingredient Declaration

WHEAT Flour (with Calcium Carbonate, Niacin, Iron, Thiamin), Water, Vegetable Margarine [Palm Oil, Rapeseed Oil, Water, Salt, Emulsifier (E471), Natural Flavouring], Sugar, Sultanas (8%), Pasteurised Free Range **EGG**, Raising Agents (E450, E501), Skimmed **MILK** Powder.

ALLERGENS

Product Contains:

| | |
|---|-------------|
| Celery/Celeriac | No |
| Cereals Containing Gluten | Yes |
| Barley | No |
| Oats | No |
| Rye | No |
| Wheat (including Spelt and Khorasan) | Yes |
| Gluten content <20ppm | No |
| Crustacea | No |
| Eggs | Yes |
| Fish | No |
| Lupin | No |
| Milk | Yes |
| Molluscs | No |
| Mustard | No |
| Nuts (Tree) | May Contain |
| Almond nuts | May Contain |
| Brazil nuts | May Contain |
| Cashew nuts | May Contain |
| Hazelnuts | May Contain |
| Macadamia (Queensland) nuts | May Contain |
| Pecan nuts | May Contain |
| Pistachio nuts | May Contain |
| Walnuts | May Contain |
| Peanuts | No |
| Sesame Seeds | No |
| Soybeans | No |
| Sulphur Dioxide and Sulphites | No |

Risk Source:

Additional Allergen Information

For allergens, including cereals containing gluten, see ingredients in BOLD. This product may contain traces of nuts as it has been made in a bakery that uses nut ingredients.

SUPPLEMENTARY INGREDIENT INFORMATION

| | |
|---------------------------------------|-----|
| Palm Oil | Yes |
| Hydrogenated Vegetable Oil/Fat | No |
| GM Protein/DNA | No |

ADDITIVES

Product Contains:

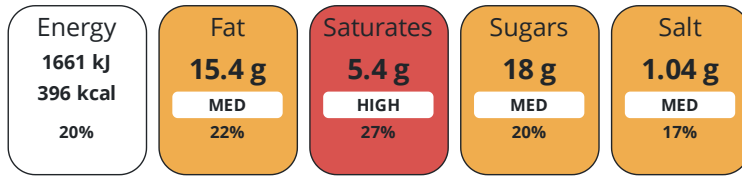
| | |
|-------------------------------------|----|
| Artificial Antioxidants | No |
| Artificial Colours | No |
| Artificial Flavour Enhancers | No |
| Artificial Flavourings | No |
| Artificial Preservatives | No |
| Artificial Sweeteners | No |

DIET SUITABILITY

| | | | |
|------------------------------|----|------------------------|--------------|
| Suitable for Coeliacs | No | Halal Diet | No |
| Kosher Diet | No | Vegetarian Diet | Suitable for |
| Vegan Diet | No | | |

NUTRITIONAL INFORMATION

Each 100g/ml portion contains:



of your reference intake.

Typical values per 100g/ml : Energy 396kcal / 1661kJ

| Nutrient | per 100g/ml | RI per 100g/ml | per 25g/ml serving | RI per 25g/ml serving |
|---------------------|-------------|----------------|--------------------|-----------------------|
| Energy (kJ) | 1661 kJ | 20% | 415.3 kJ | 5% |
| Energy (kcal) | 396 kcal | 20% | 99 kcal | 5% |
| Fat | 15.4 g | 22% | 3.9 g | 6% |
| of which Saturates | 5.4 g | 27% | 1.4 g | 7% |
| Carbohydrate | 56.5 g | 22% | 14.1 g | 5% |
| of which Sugars | 18 g | 20% | 4.5 g | 5% |
| Fibre | 1.8 g | | 0.5 g | |
| Protein | 6.9 g | 14% | 1.7 g | 3% |
| Salt | 1.04 g | 17% | 0.3 g | 5% |
| Sodium | 420 mg | | 105 mg | |
| Serving Size | | | 25 g | |

SUPPLEMENTARY NUTRITIONAL INFORMATION

HFSS (HIGH IN FAT, SALT AND SUGAR)

HFSS Status Yes

HANDLING & STORAGE INFORMATION

Directions For Use

Defrost at room temperature for 4 hours. Serve at room temperature. Once defrosted store in a cool dry place. Store in an airtight container overnight. Do not refreeze once defrosted. Consume within 2 days.

Storage Instructions

Keep frozen, store at -18°C or below.

Shelf Life from Time of Production

365 Days

ACCREDITATIONS/ CERTIFICATIONS/ ASSURANCE SCHEMES

BRCGS Certified

Other Accreditation

Roundtable of Sustainable Palm Oil (RSPO)

ORIGIN

Product Country of Origin/Place of United Kingdom

Provenance

PRODUCT CHARACTERISTICS

Standards Testing

Do you undertake trend analysis of microbiological results? Yes

Is shelf life testing undertaken? Yes

Microbiological Standards

| Organism | Description | Frequency | Target | Maximum | Sample (g or ml) |
|-------------------------------------|-------------|-----------|--------|---------|------------------|
| Enterobacteriaceae (cfu/g or ml) | | Annually | <100 | 10000 | - |
| Staphylococcus Aureus (cfu/g or ml) | | Annually | <200 | 10000 | - |

| Organism | Description | Frequency | Target | Maximum | Sample (g or ml) |
|--------------------------|--------------------------------|-----------|--------|---------|------------------|
| Salmonella (cfu/g or ml) | Detected / Not Detected in 25g | Annually | <0 | 1 | 25 |
| Yeast (cfu/g or ml) | | Annually | <100 | 10000 | - |
| Moulds (cfu/g or ml) | | Annually | <100 | 10000 | - |

Physical Standards

| Test | Description | Frequency | Target | Range | Sample (g or ml) |
|------------------------|--------------------|-------------|--------|----------|------------------|
| Dimensions Height (mm) | 3 scones per batch | Every Batch | >30 | 30 to 50 | - |
| Weight (g) | 3 scones per batch | Every Batch | >25 | 25 to 45 | - |

CONFIGURATION

Case Configuration

| | |
|---|----------|
| Total Quantity of Inner Components in Outer Case | 40 Units |
|---|----------|

| | |
|--------------------------------------|----|
| Is the Outer Case Splittable? | No |
|--------------------------------------|----|

Inner Pack Configuration

PRODUCT WEIGHTS

Inner Component

| | |
|--------------------------------------|----|
| Variable Weight Consumer Item | No |
|--------------------------------------|----|

Weight/Volume

Minimum weight: 25g

Outer Case

| | |
|--------------------------------|--------|
| Outer Case Gross Weight | 1.2 kg |
|--------------------------------|--------|

| | |
|------------------------------|------|
| Outer Case Net Weight | 1 kg |
|------------------------------|------|

PRODUCT DIMENSIONS

Inner Component

| | |
|------------------------------|-------|
| Inner Component Depth | 45 mm |
|------------------------------|-------|

| | |
|------------------------------|-------|
| Inner Component Width | 45 mm |
|------------------------------|-------|

| | |
|-------------------------------|-------|
| Inner Component Height | 30 mm |
|-------------------------------|-------|

Outer Case

| | |
|-------------------------|--------|
| Outer Case Depth | 255 mm |
|-------------------------|--------|

| | |
|-------------------------|--------|
| Outer Case Width | 255 mm |
|-------------------------|--------|

| | |
|--------------------------|--------|
| Outer Case Height | 115 mm |
|--------------------------|--------|

PALLET INFORMATION

| | |
|---|----------|
| Quantity of Cases Per Pallet Layer | 12 Cases |
|---|----------|

| | |
|--------------------------------------|-----------|
| Quantity of Layers Per Pallet | 10 Layers |
|--------------------------------------|-----------|

| | |
|-------------------------------------|-----------|
| Quantity of Cases Per Pallet | 120 Cases |
|-------------------------------------|-----------|

| | |
|----------------------|---------|
| Pallet Height | 1.3 MTR |
|----------------------|---------|

| | |
|----------------------------|--------|
| Pallet Gross Weight | 170 kg |
|----------------------------|--------|

PACKAGING

Inner Component Packaging

| Type | Materials | Weight | Recycled Plastic % | Recyclable | Returnable | Composite |
|------|-----------|--------|--------------------|------------|------------|-----------|
| Bag | Plastic | 25 g | - % | | | |

Outer Case Packaging

| Type | Materials | Weight | Recycled Plastic % | Recyclable | Returnable | Composite |
|------|-----------------|--------|--------------------|------------|------------|-----------|
| Case | Paper/Cardboard | 141 g | - % | | | |

Transport Packaging

| Type | Materials | Weight | Recycled Plastic % | Recyclable | Returnable | Composite |
|-------|-----------------|---------|--------------------|------------|------------|-----------|
| Other | Plastic | 2.5 g | - % | | | |
| Other | Paper/Cardboard | 2.5 g | - % | | | |
| Other | Wood | 208.3 g | - % | | | |

OTHER INFORMATION

| | |
|-----------------------------|------------|
| Intrastat/Taric Code | 19059070 |
| Commodity Code | 1905907000 |

CONTACT INFORMATION

Address

The Handmade Cake Co.
The Bakery
Gardner Road
Maidenhead
Berkshire
SL6 7TU
United Kingdom

P: (Phone) 01628 770908

Technical Contact

Technical Team
Maidenhead.Technical@mdesserts.com

P: (Phone) 01628 770908 Ext. 1052

Complaints Contact

Technical Team
Maidenhead.Technical@mdesserts.com

P: (Phone) 01628 770908 Ext. 1052

The information on the [Erudus System](#) has been supplied by the manufacturers of the products and, whilst the owners of the Erudus System take steps to ensure the information is regularly updated, they give no warranty and no guarantee that the information is accurate. Product information and ingredients may change, please always read product labels carefully in addition to using the information provided by Erudus.

We do not accept liability for any inaccuracies or incorrect information contained on this site.
Please visit <http://www.erudus.com/terms-and-conditions> for full terms and conditions.