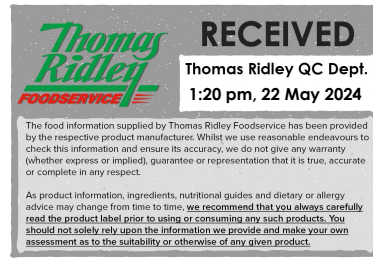


Changed May 13, 2024 15:11
Reviewed May 13, 2024 15:11
Erudus ID bbf455377704d38ac1fca39474b7d67
Version 1.1



This specification is published by [Erudus](#) for Caterfood Buying Group

The Caterfood Collection Mixed Veg 4 x 2.5 kg

Mixed Vegetables With Carrots, Peas, Green Beans, Broad Beans And Sweetcorn 4x2.5kg

PRODUCT DESCRIPTION

Frozen Mixed Vegetables

Brand	Caterfood Buying Group
Label Own Label Code	C20032
Effective Date	May 13, 2024
Product Type	Food
Product Category	Vegetables - Frozen
Storage Type	Frozen
Erudus ID	bbf455377704d38ac1fca39474b7d67
Specification Type	Fruit and Vegetables
Inner Component GTIN	5060158878420
Outer Case GTIN	5060158878413



INGREDIENTS

Ingredient Declaration

Diced Carrots (48%), Peas (30%), Green Beans (9%), Broad Beans (7%), Sweetcorn (6%)

ALLERGENS

Product Contains:

Celery/Celeriac	No
Cereals Containing Gluten	No
Barley	No
Oats	No
Rye	No
Wheat (including Spelt and Khorasan)	No
Crustacea	No
Eggs	No
Fish	No
Lupin	No
Milk	No
Molluscs	No
Mustard	No
Nuts (Tree)	No
Almond nuts	No
Brazil nuts	No
Cashew nuts	No
Hazelnuts	No
Macadamia (Queensland) nuts	No
Pecan nuts	No
Pistachio nuts	No
Walnuts	No
Peanuts	No
Sesame Seeds	No
Soybeans	No
Sulphur Dioxide and Sulphites	No

SUPPLEMENTARY INGREDIENT INFORMATION

Palm Oil	No
Hydrogenated Vegetable Oil/Fat	No
GM Protein/DNA	No

ADDITIVES

Product Contains:

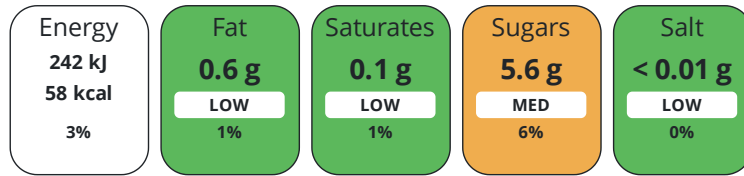
Artificial Antioxidants	No
Artificial Colours	No
Artificial Flavour Enhancers	No
Artificial Flavourings	No
Artificial Preservatives	No
Artificial Sweeteners	No

DIET SUITABILITY

Vegan Diet	Suitable for	Vegetarian Diet	Suitable for
Halal Diet	No	Kosher Diet	No

NUTRITIONAL INFORMATION

Each 100g/ml portion contains:



of your reference intake.

Typical values per 100g/ml : Energy 58kcal / 242kj

Nutrient	per 100g	RI per 100g	per 80g serving	RI per 80g serving
Energy (kJ)	242.17 kJ	3%	193.7 kJ	2%
Energy (kcal)	57.69 kcal	3%	46.2 kcal	2%
Fat	0.6 g	1%	0.5 g	1%
of which Saturates	0.1 g	1%	0.1 g	1%
of which Mono-unsaturates	0.1 g		0.1 g	
of which Polyunsaturates	0.2 g		0.2 g	
Carbohydrate	8.2 g	3%	6.6 g	3%
of which Sugars	5.6 g	6%	4.5 g	5%
of which Starch	2.4 g		1.9 g	
Fibre	4.5 g		3.6 g	
Protein	2.6 g	5%	2.1 g	4%
Salt	< 0.01 g	0%	-	
Sodium	< 0.01 mg		-	
Serving Size			80 g	
Number of Servings			31 Servings	

VITAMINS AND MINERALS

Nutrient	per 100g	RI per 100g	per 80g serving	RI per 80g serving
Vitamin A	960.5 µg	120%	768.4 µg	96%
Vitamin C	11 mg	14%	8.8 mg	11%
Thiamin (B1)	0.3 mg	27%	0.2 mg	18%
Riboflavin (B2)	0.04 mg	3%	-	
Niacin (B3)	1.66 mg	10%	1.3 mg	8%
Calcium	29.75 mg	4%	23.8 mg	3%
Magnesium	17.3 mg	5%	13.8 mg	4%
Iron	0.8 mg	6%	0.6 mg	4%
Zinc	0.8 mg	8%	0.6 mg	6%

SUPPLEMENTARY NUTRITIONAL INFORMATION

HANDLING & STORAGE INFORMATION

Directions For Use

Place 80g of mixed vegetables and 2 tablespoons of water in a microwaveable covered dish. Cook on full power (1000Watt) for 3 minutes. Stir halfway. Boiling water: Add 80g of frozen mixed vegetables in boiling water. Bring back to the boil, cover and simmer for 4-5 minutes or until tender.

Storage Instructions

STORE AT -18°C OR BELOW DO NOT REFREEZE ONCE DEFROSTED

Shelf Life from Time of Production

913 Days

Exempt From Shelf Life Labelling

No

ACCREDITATIONS/ CERTIFICATIONS/ ASSURANCE SCHEMES

BRCGS Certified**IFS Food Standard****ISO 14001 (Environmental Management)**

ORIGIN

Product Country of Origin/Place of

Belgium, France, Hungary, Netherlands (the)

Provenance**Additional Origin Details**

n/a

PRODUCT CHARACTERISTICS

Standards Testing

Do you undertake trend analysis of microbiological results?

Yes

Is shelf life testing undertaken?

Yes

CONFIGURATION

Case Configuration

Total Quantity of Inner Components in Outer Case

4 Units

Inner Pack Configuration

PRODUCT WEIGHTS

Inner Component

Variable Weight Consumer Item

No

Inner Component Weight

2.5 kg

Outer Case

Outer Case Gross Weight

10.26 kg

Outer Case Net Weight

10 kg

PRODUCT DIMENSIONS

Inner Component

Inner Component Depth

380 mm

Inner Component Width

300 mm

Inner Component Height

50 mm

Outer Case

Outer Case Depth

372 mm

Outer Case Width

242 mm

Outer Case Height

191 mm

PALLET INFORMATION

Quantity of Cases Per Pallet Layer

12 Cases

Quantity of Layers Per Pallet

8 Layers

Quantity of Cases Per Pallet

96 Cases

Pallet Height

1.69 MTR

Pallet Gross Weight

1010.13 kg

PACKAGING

Inner Component Packaging

Type	Materials	Weight	Recycled Plastic %	Recyclable	Returnable	Composite
Bag	Plastic / LDPE (Low Density Polyethylene)	9.29 g	- %			

Outer Case Packaging

Type	Materials	Weight	Recycled Plastic %	Recyclable	Returnable	Composite
Case	Paper/Cardboard / Corrugated	216.96 g	- %			
Tape	Plastic / PP (Polypropylene)	1.1 g	- %			
Label	Paper/Cardboard	0.8 g	- %			

Transport Packaging

Type	Materials	Weight	Recycled Plastic %	Recyclable	Returnable	Composite
Pallet	Wood	25000 g	- %			
Label	Paper/Cardboard	5.7 g	- %			
Pallet Wrap	Plastic / LDPE (Low Density Polyethylene)	160 g	- %			

OTHER INFORMATION

CONTACT INFORMATION

ADDRESS

Caterfood Buying Group
BFS Group Ltd
814 Leigh Road
Slough
Berkshire
SL1 4BD
United Kingdom

The information on the [Erudus System](#) has been supplied by the manufacturers of the products and, whilst the owners of the Erudus System take steps to ensure the information is regularly updated, they give no warranty and no guarantee that the information is accurate. Product information and ingredients may change, please always read product labels carefully in addition to using the information provided by Erudus.

We do not accept liability for any inaccuracies or incorrect information contained on this site.
Please visit <http://www.erudus.com/terms-and-conditions> for full terms and conditions.