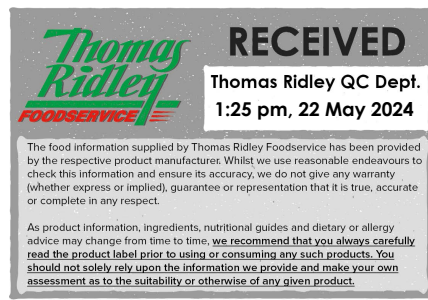


Changed May 13, 2024 15:10
Reviewed May 13, 2024 15:10
Erudus ID 7f7154594ca04702a61cbe46e48c5dd4
Version 2.0



This specification is published by [Erudus](#) for Caterfood Buying Group

The Caterfood Collection Sweetcorn 4 x 2.5 kg

Sweetcorn 4x2.5kg

PRODUCT DESCRIPTION

Frozen Sweetcorn

Brand	Caterfood Buying Group
Label Own Label Code	C20029
Effective Date	May 13, 2024
Product Type	Food
Product Category	Vegetables - Frozen
Storage Type	Frozen
Erudus ID	7f7154594ca04702a61cbe46e48c5dd4
Specification Type	Fruit and Vegetables
Inner Component GTIN	5060158878369
Outer Case GTIN	5060158878352



INGREDIENTS

Ingredient Declaration

Sweetcorn

ALLERGENS

Product Contains:

Celery/Celeriac	No
Cereals Containing Gluten	No
Barley	No
Oats	No
Rye	No
Wheat (including Spelt and Khorasan)	No
Crustacea	No
Eggs	No
Fish	No
Lupin	No
Milk	No
Molluscs	No
Mustard	No
Nuts (Tree)	No
Almond nuts	No
Brazil nuts	No
Cashew nuts	No
Hazelnuts	No
Macadamia (Queensland) nuts	No
Pecan nuts	No
Pistachio nuts	No
Walnuts	No
Peanuts	No
Sesame Seeds	No
Soybeans	No
Sulphur Dioxide and Sulphites	No

SUPPLEMENTARY INGREDIENT INFORMATION

Palm Oil	No
Hydrogenated Vegetable Oil/Fat	No
GM Protein/DNA	No

ADDITIVES

Product Contains:

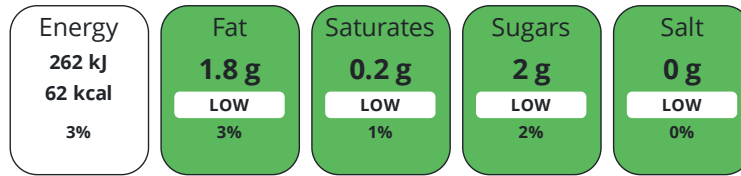
Artificial Antioxidants	No
Artificial Colours	No
Artificial Flavour Enhancers	No
Artificial Flavourings	No
Artificial Preservatives	No
Artificial Sweeteners	No

DIET SUITABILITY

Vegan Diet	Suitable for	Vegetarian Diet	Suitable for
Halal Diet	No		

NUTRITIONAL INFORMATION

Each 100g/ml portion contains:



of your reference intake.

Typical values per 100g/ml : Energy 62kcal / 262kj

Nutrient	per 100g	RI per 100g	per 80g serving	RI per 80g serving
Energy (kJ)	262 kJ	3%	209.6 kJ	2%
Energy (kcal)	62 kcal	3%	49.6 kcal	2%
Fat	1.8 g	3%	1.4 g	2%
of which Saturates	0.2 g	1%	0.2 g	1%
of which Mono-unsaturates	0.5 g		0.4 g	
of which Polyunsaturates	0.7 g		0.6 g	
Carbohydrate	8.1 g	3%	6.5 g	3%
of which Sugars	2 g	2%	1.6 g	2%
of which Starch	5.9 g		4.7 g	
Fibre	1.99 g		1.6 g	
Protein	3.4 g	7%	2.7 g	5%
Salt	0 g	0%	-	
Sodium	< 0.01 mg		-	
Serving Size			80 g	
Number of Servings			31 Servings	

VITAMINS AND MINERALS

Nutrient	per 100g	RI per 100g	per 80g serving	RI per 80g serving
Vitamin A	4 µg	1%	3.2 µg	0%
Vitamin C	8 mg	10%	6.4 mg	8%
Thiamin (B1)	0.16 mg	15%	0.1 mg	9%
Riboflavin (B2)	0.05 mg	4%	-	
Niacin (B3)	1.9 mg	12%	1.5 mg	9%
Calcium	3 mg	0%	2.4 mg	0%
Magnesium	37 mg	10%	29.6 mg	8%
Iron	0.7 mg	5%	0.6 mg	4%
Zinc	0.4 mg	4%	0.3 mg	3%

SUPPLEMENTARY NUTRITIONAL INFORMATION

HANDLING & STORAGE INFORMATION

Directions For Use

Place 80g of sweetcorn and 3-5 tablespoons of water in a microwaveable covered dish. Cook on full power (800Watt) for 4 minutes. Stir halfway.

Storage Instructions

STORE AT -18°C OR BELOW DO NOT REFREEZE ONCE DEFROSTED

Shelf Life from Time of Production 913 Days

Exempt From Shelf Life Labelling No

ACCREDITATIONS/ CERTIFICATIONS/ ASSURANCE SCHEMES

BRCGS Certified

ISO 14001 (Environmental Management)

IFS Food Standard

ORIGIN

Product Country of Origin/Place of Hungary

Provenance

Additional Origin Details

n/a

PRODUCT CHARACTERISTICS

Standards Testing

Do you undertake trend analysis of microbiological results? Yes

Is shelf life testing undertaken? Yes

CONFIGURATION

Case Configuration

Total Quantity of Inner Components in Outer Case 4 Units

Inner Pack Configuration

PRODUCT WEIGHTS

Inner Component

Variable Weight Consumer Item No

Inner Component Weight 2.5 kg

Outer Case

Outer Case Gross Weight 10.25 kg

Outer Case Net Weight 10 kg

PRODUCT DIMENSIONS

Inner Component

Inner Component Depth 360 mm

Inner Component Width 300 mm

Inner Component Height 50 mm

Outer Case

Outer Case Depth 372 mm

Outer Case Width 242 mm

Outer Case Height 181 mm

PALLET INFORMATION

Quantity of Cases Per Pallet Layer 12 Cases

Quantity of Layers Per Pallet 8 Layers

Quantity of Cases Per Pallet 96 Cases

Pallet Height 1.61 MTR

Pallet Gross Weight 1009 kg

PACKAGING

Inner Component Packaging

Type	Materials	Weight	Recycled Plastic %	Recyclable	Returnable	Composite
Bag	Plastic / LDPE (Low Density Polyethylene)	10.53 g	- %			

Outer Case Packaging

Type	Materials	Weight	Recycled Plastic %	Recyclable	Returnable	Composite
Case	Paper/Cardboard / Corrugated	211.88 g	- %			
Tape	Plastic / PP (Polypropylene)	1.1 g	- %			
Label	Paper/Cardboard	0.8 g	- %			

Transport Packaging

Type	Materials	Weight	Recycled Plastic %	Recyclable	Returnable	Composite
Pallet	Wood	25000 g	- %			
Label	Paper/Cardboard	5.7 g	- %			
Pallet Wrap	Plastic / LDPE (Low Density Polyethylene)	160 g	- %			

OTHER INFORMATION

CONTACT INFORMATION

ADDRESS

Caterfood Buying Group
 BFS Group Ltd
 814 Leigh Road
 Slough
 Berkshire
 SL1 4BD
 United Kingdom

The information on the [Erudus System](#) has been supplied by the manufacturers of the products and, whilst the owners of the Erudus System take steps to ensure the information is regularly updated, they give no warranty and no guarantee that the information is accurate. Product information and ingredients may change, please always read product labels carefully in addition to using the information provided by Erudus.

We do not accept liability for any inaccuracies or incorrect information contained on this site.
 Please visit <http://www.erudus.com/terms-and-conditions> for full terms and conditions.