

Changed Apr 25, 2024 09:04

Reviewed Apr 25, 2024 09:04

Erudus ID 2f35d53032fb4463ac23ef82d3d3a154

Version 1.1

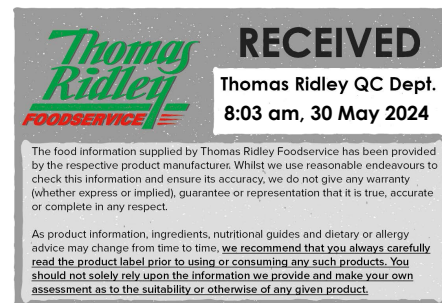
# Eat Natural Almond, Apricot & Yoghurt 40g bars 12 X 12

Fruit & Nut Bars Almond, Apricot & Yoghurt 40g

## PRODUCT DESCRIPTION

Smooth yoghurt tops caramel-flavoured apricots, crunchy almonds and light puffs of rice. Sweetened and fused together with honey.

Brand	Ferrero UK Ltd
Manufacturer Product Code	77250020
Product Type	Food
Product Category	Confectionery
Storage Type	Ambient
Erudus ID	2f35d53032fb4463ac23ef82d3d3a154
Specification Type	Generic
Inner Component GTIN	8000500417539
Inner Pack GTIN	8000500417546
Inner Pack Product Code	77250018
Outer Case GTIN	8000500417577



## INGREDIENTS

### Ingredient Declaration

Yoghurt flavour coating 30% (palm kernel oil, MILK whey, sugar, dried yoghurt (MILK), emulsifier: sunflower lecithin), dried apricots 17%, shredded coconut 14%, glucose syrup, crisped rice (rice, sugar), ALMONDS 10%, honey 5%

## ALLERGENS

Product Contains:

Celery/Celeriac	No	Mustard	No
Cereals Containing Gluten	No	Nuts (Tree)	Yes
Barley	No	Almond nuts	Yes
Oats	No	Brazil nuts	May Contain
Rye	No	Cashew nuts	May Contain
Wheat (including Spelt and Khorasan)	No	Hazelnuts	May Contain
Crustacea	No	Macadamia (Queensland) nuts	May Contain
Eggs	No	Pecan nuts	May Contain
Fish	No	Pistachio nuts	May Contain
Lupin	No	Walnuts	May Contain
Milk	Yes	Peanuts	May Contain
Molluscs	No	Sesame Seeds	May Contain
		Soybeans	May Contain
		Sulphur Dioxide and Sulphites	No

Risk Source:

### Allergen Statement On Pack

For allergens, see ingredients in BOLD CAPITALS. May also contain: Other nuts, peanuts, soya and sesame seeds. Warning: whilst we make every effort, we cannot guarantee that nutshell fragments will not find their way in this bar

#### FREE FROM CLAIMS

<b>Free From Barley</b>	Yes	<b>Free From Mustard</b>	Yes
<b>Free From Celery/Celeriac</b>	Yes	<b>Free From Oats</b>	Yes
<b>Free From Crustacea</b>	Yes	<b>Free From Rye</b>	Yes
<b>Free From Eggs</b>	Yes	<b>Free From Sulphur Dioxide</b>	Yes
<b>Free From Fish</b>	Yes	<b>Free From Wheat</b>	Yes
<b>Gluten-Free</b>	Yes		
<b>Free From Molluscs</b>	Yes		

#### SUPPLEMENTARY INGREDIENT INFORMATION

<b>Palm Oil</b>	Yes
<b>GM Protein/DNA</b>	No

#### ADDITIVES

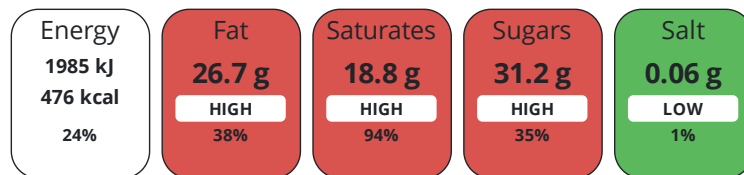
Product Contains:

#### DIET SUITABILITY

<b>Vegan Diet</b>	No	<b>Vegetarian Diet</b>	Suitable for
<b>Halal Diet</b>	No	<b>Kosher Diet</b>	No

#### NUTRITIONAL INFORMATION

Each 100g/ml portion contains:



of your reference intake.

Typical values per 100g/ml : Energy 476kcal / 1985kJ

Nutrient	per 100g	RI per 100g
<b>Energy (kJ)</b>	1985 kJ	24%
<b>Energy (kcal)</b>	476 kcal	24%
<b>Fat</b>	26.7 g	38%
of which Saturates	18.8 g	94%
<b>Carbohydrate</b>	49.7 g	19%
of which Sugars	31.2 g	35%
<b>Protein</b>	6.6 g	13%
<b>Salt</b>	0.06 g	1%

#### SUPPLEMENTARY NUTRITIONAL INFORMATION

#### HANDLING & STORAGE INFORMATION

##### Directions For Use

For allergens, see ingredients in BOLD CAPITALS. Warning: whilst we make every effort, we cannot guarantee that nutshell fragments will not find their way into this bar

##### Storage Instructions

Store in a cool dry place.

<b>Shelf Life from Time of Production</b>	270 Days	<b>Exempt From Shelf Life Labelling</b>	No
---	----------	---	----

ACCREDITATIONS/  
CERTIFICATIONS/  
ASSURANCE  
SCHEMES  
ORIGIN

<b>BRCGS Certified</b>	
<b>BRCGS Food Safety</b>	
<b>Product Country of Origin/Place of Provenance</b>	United Kingdom

<b>BRCGS Gluten-Free</b>	
--------------------------	--

PRODUCT  
CHARACTERISTICS  
CONFIGURATION

Standards Testing	
Case Configuration	
<b>Total Quantity of Inner Components in Outer Case</b>	12 Units
<b>Total Quantity of Inner Packs in Outer Case</b>	12 Units
<b>Is the Outer Case Splittable?</b>	Yes

Inner Pack Configuration	
<b>Is Inner Pack Splittable?</b>	No
<b>Quantity of Inner Components in Inner Pack</b>	12

PRODUCT  
WEIGHTS

Inner Component	
<b>Variable Weight Consumer Item</b>	Yes
Outer Case	
<b>Outer Case Gross Weight</b>	7.1 kg
<b>Outer Case Net Weight</b>	6.09 kg

Inner Pack	
<b>Inner Pack Gross Weight</b>	600 g

PRODUCT  
DIMENSIONS

Inner Component	
<b>Inner Component Depth</b>	157 mm
<b>Inner Component Width</b>	40 mm
<b>Inner Component Height</b>	20 mm
Outer Case	
<b>Outer Case Depth</b>	387 mm
<b>Outer Case Width</b>	275 mm
<b>Outer Case Height</b>	237 mm

Inner Pack	
<b>Inner Pack Depth</b>	130 mm
<b>Inner Pack Width</b>	186 mm
<b>Inner Pack Height</b>	73 mm

PALLET  
INFORMATION

<b>Quantity of Cases Per Pallet Layer</b>	10 Cases
<b>Quantity of Layers Per Pallet</b>	5 Layers
<b>Quantity of Cases Per Pallet</b>	50 Cases

<b>Pallet Height</b>	1.34 MTR
----------------------	----------

PACKAGING

Inner Component Packaging							
Type	Materials	Weight	Recycled Plastic %	Recyclable	Returnable	Composite	
Film	Plastic	0.701 g	- %				
Inner Pack Packaging							
Type	Materials	Weight	Recycled Plastic %	Recyclable	Returnable	Composite	
Box	Paper/Cardboard	51 g	- %				
Outer Case Packaging							
Type	Materials	Weight	Recycled Plastic %	Recyclable	Returnable	Composite	
Box	Paper/Cardboard	300 g	- %				
Transport Packaging							
Type	Materials	Weight	Recycled Plastic %	Recyclable	Returnable	Composite	
Pallet	Wood	30000 g	- %				

OTHER  
INFORMATION

CONTACT  
INFORMATION

Address

Ferrero UK Ltd  
889 Greenford Rd  
Greenford  
UB6 0HE  
England

P. (Phone) 07927565564

The information on the [Erudus System](#) has been supplied by the manufacturers of the products and, whilst the owners of the Erudus System take steps to ensure the information is regularly updated, they give no warranty and no guarantee that the information is accurate. Product information and ingredients may change, please always read product labels carefully in addition to using the information provided by Erudus.

We do not accept liability for any inaccuracies or incorrect information contained on this site.  
Please visit <http://www.erudus.com/terms-and-conditions> for full terms and conditions.