

Changed Apr 25, 2024 08:57

Reviewed Apr 25, 2024 08:57

Erudus ID 9d7f9d8513104e76b3bfcd98c88c32ed

Version 1.1

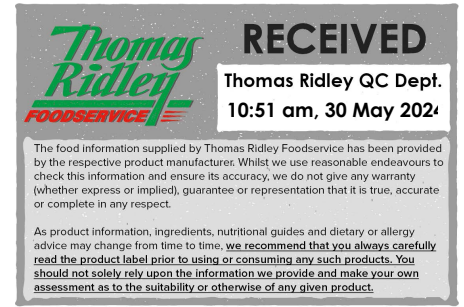
Eat Natural Protein Salted Caramel 40g bars x 12 X 12

Fruit & Nut Bars Protein Salted Caramel 40g

PRODUCT DESCRIPTION

A protein-packed bar made with peanuts and soya crispies alongside dates, almonds and a hint of salted caramel.

Brand	Ferrero UK Ltd
Manufacturer Product Code	77250402
Product Type	Food
Product Category	Confectionery
Storage Type	Ambient
Erudus ID	9d7f9d8513104e76b3bfcd98c88c32ed
Specification Type	Generic
Inner Component GTIN	8000500416990
Inner Pack GTIN	8000500429440
Outer Case GTIN	8000500417058



INGREDIENTS

Ingredient Declaration

PEANUTS 51%, glucose syrup, SOYA protein crispies 10% (SOYA protein isolate, tapioca starch, salt), dates 9% (dates, rice flour), honey, ALMONDS 6%, salted caramel 3% (muscovado sugar, BUTTERMILK powder, natural flavourings, cream powder (MILK), rice flour, carob flour, salt).

ALLERGENS

Product Contains:

Celery/Celeriac	No	Mustard	No
Cereals Containing Gluten	No	Nuts (Tree)	Yes
Barley	No	Almond nuts	Yes
Oats	No	Brazil nuts	May Contain
Rye	No	Cashew nuts	May Contain
Wheat (including Spelt and Khorasan)	No	Hazelnuts	May Contain
Crustacea	No	Macadamia (Queensland) nuts	May Contain
Eggs	No	Pecan nuts	May Contain
Fish	No	Pistachio nuts	May Contain
Lupin	No	Walnuts	May Contain
Milk	Yes	Peanuts	Yes
Molluscs	No	Sesame Seeds	May Contain
		Soybeans	Yes
		Sulphur Dioxide and Sulphites	No

Risk Source:

Allergen Statement On Pack

For allergens, see ingredients in BOLD CAPITALS. May also contain: Other nuts, peanuts, sesame seeds and cow's milk. Warning: whilst we make every effort, we cannot guarantee that nutshell fragments will not find their way in this bar

FREE FROM CLAIMS

Free From Barley	Yes	Free From Mustard	Yes
Free From Celery/Celeriac	Yes	Free From Oats	Yes
Free From Crustacea	Yes	Free From Rye	Yes
Free From Eggs	Yes	Free From Sulphur Dioxide	Yes
Free From Fish	Yes	Free From Wheat	Yes
Gluten-Free	Yes		
Free From Molluscs	Yes		

SUPPLEMENTARY INGREDIENT INFORMATION

Palm Oil	No
GM Protein/DNA	No

ADDITIVES

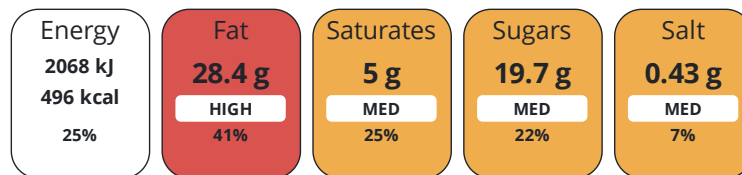
Product Contains:

DIET SUITABILITY

Vegan Diet	No	Vegetarian Diet	Suitable for
Halal Diet	No	Kosher Diet	No

NUTRITIONAL INFORMATION

Each 100g/ml portion contains:



of your reference intake.

Typical values per 100g/ml : Energy 496kcal / 2068kJ

Nutrient	per 100g	RI per 100g
Energy (kJ)	2068 kJ	25%
Energy (kcal)	496 kcal	25%
Fat	28.4 g	41%
of which Saturates	5 g	25%
Carbohydrate	31.3 g	12%
of which Sugars	19.7 g	22%
Protein	26 g	52%
Salt	0.43 g	7%

SUPPLEMENTARY NUTRITIONAL INFORMATION

HANDLING & STORAGE INFORMATION

Directions For Use

For allergens, see ingredients in BOLD CAPITALS. Warning: whilst we make every effort, we cannot guarantee that nutshell fragments will not find their way into this bar

Storage Instructions

Store in a cool dry place.

Shelf Life from Time of Production	270 Days	Exempt From Shelf Life Labelling	No
---	----------	---	----

ACCREDITATIONS/
CERTIFICATIONS/
ASSURANCE
SCHEMES
ORIGIN

BRCGS Certified	
BRCGS Food Safety	
Product Country of Origin/Place of Provenance	United Kingdom

BRCGS Gluten-Free	
--------------------------	--

PRODUCT
CHARACTERISTICS
CONFIGURATION

Standards Testing	
Case Configuration	
Total Quantity of Inner Components in Outer Case	12 Units
Total Quantity of Inner Packs in Outer Case	12 Units
Is the Outer Case Splittable?	Yes

Inner Pack Configuration	
Is Inner Pack Splittable?	No
Quantity of Inner Components in Inner Pack	12

PRODUCT
WEIGHTS

Inner Component	
Variable Weight Consumer Item	Yes
Outer Case	
Outer Case Gross Weight	7.1 kg
Outer Case Net Weight	6.09 kg

Inner Pack	
Inner Pack Gross Weight	600 g

PRODUCT
DIMENSIONS

Inner Component	
Inner Component Depth	157 mm
Inner Component Width	40 mm
Inner Component Height	20 mm
Outer Case	
Outer Case Depth	387 mm
Outer Case Width	275 mm
Outer Case Height	237 mm

Inner Pack	
Inner Pack Depth	130 mm
Inner Pack Width	186 mm
Inner Pack Height	73 mm

PALLET
INFORMATION

Quantity of Cases Per Pallet Layer	10 Cases
Quantity of Layers Per Pallet	5 Layers
Quantity of Cases Per Pallet	50 Cases

Pallet Height	1.34 MTR
----------------------	----------

PACKAGING

Inner Component Packaging						
Type	Materials	Weight	Recycled Plastic %	Recyclable	Returnable	Composite
Film	Plastic	0.701 g	- %			
Inner Pack Packaging						
Type	Materials	Weight	Recycled Plastic %	Recyclable	Returnable	Composite
Box	Paper/Cardboard	51 g	- %			
Outer Case Packaging						
Type	Materials	Weight	Recycled Plastic %	Recyclable	Returnable	Composite
Box	Paper/Cardboard	300 g	- %			
Transport Packaging						
Type	Materials	Weight	Recycled Plastic %	Recyclable	Returnable	Composite
Pallet	Wood	30000 g	- %			

OTHER
INFORMATION

CONTACT
INFORMATION

Address

Ferrero UK Ltd
889 Greenford Rd
Greenford
UB6 0HE
England

P. (Phone) 07927565564

The information on the [Erudus System](#) has been supplied by the manufacturers of the products and, whilst the owners of the Erudus System take steps to ensure the information is regularly updated, they give no warranty and no guarantee that the information is accurate. Product information and ingredients may change, please always read product labels carefully in addition to using the information provided by Erudus.

We do not accept liability for any inaccuracies or incorrect information contained on this site.
Please visit <http://www.erudus.com/terms-and-conditions> for full terms and conditions.