

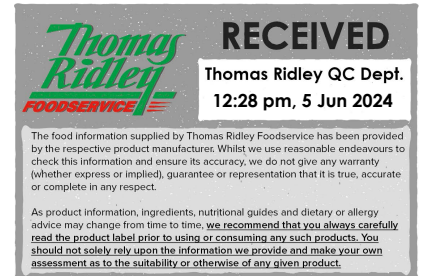
# Folkington's Club Soda Water (6 x 330ml)

Club Soda Water 4x

## PRODUCT DESCRIPTION

Folkington's Club Soda Water 6 x 330ml Folkington's Club Soda is uniquely made with minerals that have been extracted from Nahcolite rock crystals that form natural sodium bicarbonate.

<b>Brand</b>	Euro Food Brands
<b>Manufacturer Product Code</b>	EFFS033SW6P
<b>Product Type</b>	Drink
<b>Product Category</b>	Juices and Cordials
<b>Storage Type</b>	Ambient
<b>Erudus ID</b>	dde608d45dc84ef182ca439397727e06
<b>Specification Type</b>	Legacy
<b>Inner Component GTIN</b>	5060042982226
<b>Outer Case GTIN</b>	5060042982233



## INGREDIENTS

### Ingredient Declaration

Carbonated water, naturally extracted minerals (sodium bicarbonate)

## ALLERGENS

Product Contains:

<b>Celery/Celeriac</b>	No	<b>Mustard</b>	No
<b>Cereals Containing Gluten</b>	No	<b>Nuts (Tree)</b>	No
<b>Barley</b>	No	<b>Almond nuts</b>	No
<b>Oats</b>	No	<b>Brazil nuts</b>	No
<b>Rye</b>	No	<b>Cashew nuts</b>	No
<b>Wheat (including Spelt and Khorasan)</b>	No	<b>Hazelnuts</b>	No
<b>Gluten content &lt;20ppm</b>	Yes	<b>Macadamia (Queensland) nuts</b>	No
<b>Crustacea</b>	No	<b>Pecan nuts</b>	No
<b>Eggs</b>	No	<b>Pistachio nuts</b>	No
<b>Fish</b>	No	<b>Walnuts</b>	No
<b>Lupin</b>	No	<b>Peanuts</b>	No
<b>Milk</b>	No	<b>Sesame Seeds</b>	No
<b>Molluscs</b>	No	<b>Soybeans</b>	No
		<b>Sulphur Dioxide and Sulphites</b>	No

### Additional Allergen Information

Free from any preservatives or artificial sweeteners or additives

## SUPPLEMENTARY INGREDIENT INFORMATION

<b>Palm Oil</b>	No
<b>Hydrogenated Vegetable Oil/Fat</b>	No
<b>GM Protein/DNA</b>	No

ADDITIVES

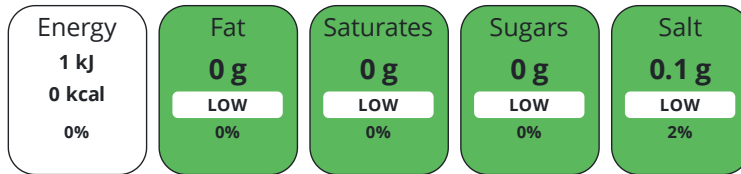
Product Contains:

<b>Artificial Antioxidants</b>	No	<b>Artificial Flavourings</b>	No
<b>Artificial Colours</b>	No	<b>Artificial Preservatives</b>	No
<b>Artificial Flavour Enhancers</b>	No	<b>Artificial Sweeteners</b>	No
<b>Suitable for Coeliacs</b>	Yes	<b>Halal Diet</b>	No
<b>Kosher Diet</b>	No	<b>Vegetarian Diet</b>	Suitable for
<b>Vegan Diet</b>	Suitable for		

DIET SUITABILITY

NUTRITIONAL INFORMATION

Each 100g/ml portion contains:



of your reference intake.

Typical values per 100g/ml : Energy 0kcal / 1kJ

Nutrient	per 100g/ml	RI per 100g/ml
Energy (kJ)	0.6 kJ	0%
Energy (kcal)	0.1 kcal	0%
Fat	0 g	0%
of which Saturates	0 g	0%
Carbohydrate	0 g	0%
of which Sugars	0 g	0%
Fibre	0 g	
Protein	0 g	0%
Salt	0.1 g	2%

SUPPLEMENTARY NUTRITIONAL INFORMATION

HANDLING & STORAGE INFORMATION

Directions For Use

n/a

Storage Instructions

Store in a cool dry place

**Shelf Life from Time of Production** 1095 Days

ACCREDITATIONS/ CERTIFICATIONS/ ASSURANCE SCHEMES ORIGIN

**BRCGS Certified**

**Other Accreditation**

**IFS Food Standard**

**Product Country of Origin/Place of** Netherlands (the)

**Provenance**

**Additional Origin Details**

n/a

PRODUCT CHARACTERISTICS

Standards Testing

**Do you undertake trend analysis of microbiological results?** Yes

**Is shelf life testing undertaken?** Yes

CONFIGURATION

Case Configuration

Inner Pack Configuration

**Total Quantity of Inner Components in** 4 Units

**Outer Case**

PRODUCT WEIGHTS

Inner Component

**Variable Weight Consumer Item** No

**Net Drained Weight** 0.198 kg

**Weight/Volume**

198g

Outer Case

**Outer Case Gross Weight** 8.5 kg

**Outer Case Net Weight** 792 kg

PRODUCT DIMENSIONS

Inner Component

**Inner Component Depth** 197 mm

**Inner Component Width** 131 mm

**Inner Component Height** 117 mm

Outer Case

**Outer Case Depth** 396 mm

**Outer Case Width** 264 mm

**Outer Case Height** 118 mm

PALLET INFORMATION

**Quantity of Cases Per Pallet Layer** 10 Cases

**Pallet Height** 2 MTR

**Quantity of Layers Per Pallet** 12 Layers

**Pallet Gross Weight** 1040 kg

**Quantity of Cases Per Pallet** 120 Cases

PACKAGING

Inner Component Packaging

Type	Materials	Weight	Recycled Plastic %	Recyclable	Returnable	Composite
Can	Paper/Cardboard	52 g	- %			
Can	Aluminium	66 g	- %			

Outer Case Packaging

Type	Materials	Weight	Recycled Plastic %	Recyclable	Returnable	Composite
Case	Plastic	62 g	- %			
Case	Paper/Cardboard	66 g	- %			

OTHER INFORMATION

**Commodity Code** 22019000

**Manufacturer Comments**

EX WORKS / DELIVERED- EXW SUPPLIER NAME- Metro Drinks Limited UNITS PER CASE 4 (units of 6 cans) PALLET TYPE IN/HANDBALL-4 way MINIMUM LIFE INTO EFB WAREHOUSE (months) 7 MOQ- 120 trays

CONTACT INFORMATION

Address

Euro Food Brands  
1-4 Kimbell Mews  
Humfrey Lane, Boughton  
Northampton  
Northamptonshire  
NN2 8XB  
United Kingdom

P: (Phone) 01604821200

The information on the [Erudus System](#) has been supplied by the manufacturers of the products and, whilst the owners of the Erudus System take steps to ensure the information is regularly updated, they give no warranty and no guarantee that the information is accurate. Product information and ingredients may change, please always read product labels carefully in addition to using the information provided by Erudus.

We do not accept liability for any inaccuracies or incorrect information contained on this site.  
Please visit <http://www.erudus.com/terms-and-conditions> for full terms and conditions.