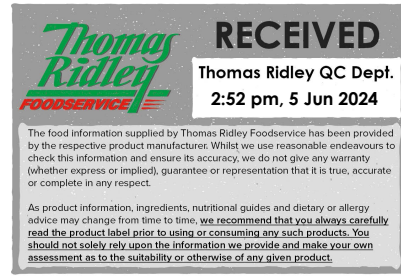


Hendo's Soya and Potato Snacks 24 x 23g

Hendo's 23g 24x23g

PRODUCT DESCRIPTION

Henderson's Relish Flavoured Soya and Potato Snacks



Brand	Henderson's Relish
Manufacturer Product Code	Hendo's 24x23g
Product Type	Food
Product Category	Crisps & Snacks
Storage Type	Ambient
Erudus ID	ea01f3f82ede4f7ba2ea705364573308
Specification Type	Legacy



Inner Component GTIN	5021016000582
Outer Case GTIN	5021016000599



INGREDIENTS

Ingredient Declaration

SOYA Flour, Tapioca Starch, Dehydrated Potato, Vegetable Oils, (Sunflower Oil, Rapeseed Oil in varying proportions), Potato Starch, Rice Flour, Henderson's Relish Powder, (Condiment Henderson's Relish with Sweetener (1.7%) [Spirit Vinegar, Sugar, Colour: Ammonia Caramel. Sugar Syrup, Salt, Tamarind, Acid: Acetic Acid. Cayenne Pepper, Cloves, Sweetener: Saccharins. Garlic Oil], Maltodextrin), Sugar, Natural Flavouring, Garlic, Onions, Acid: Citric Acid. Salt, Maltodextrin, Potassium Chloride, Spices (Chilli, Cloves, Pepper), Yeast Extract, Lemon Juice Powder, Colour: Paprika Extract.

ALLERGENS

Product Contains:

Celery/Celeriac	No	Mustard	No
Cereals Containing Gluten	No	Nuts (Tree)	No
Barley	No	Almond nuts	No
Oats	No	Brazil nuts	No
Rye	No	Cashew nuts	No
Wheat (including Spelt and Khorasan)	No	Hazelnuts	No
Gluten content <20ppm	Yes	Macadamia (Queensland) nuts	No
Crustacea	No	Pecan nuts	No
Eggs	No	Pistachio nuts	No
Fish	No	Walnuts	No
Lupin	No	Peanuts	No
Milk	No	Sesame Seeds	No
Molluscs	No	Soybeans	Yes
		Sulphur Dioxide and Sulphites	No

Additional Allergen Information

Soya Made in a factory that handles Milk

SUPPLEMENTARY
INGREDIENT
INFORMATION

Palm Oil	No
Hydrogenated Vegetable Oil/Fat	No
GM Protein/DNA	No

ADDITIVES

Product Contains:

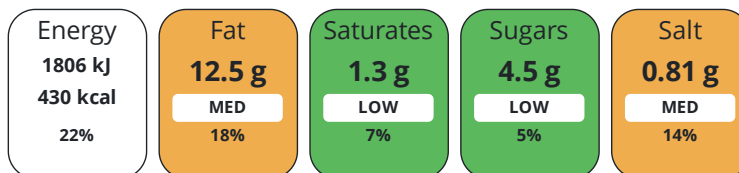
Artificial Antioxidants	No	Artificial Flavourings	Yes
Artificial Colours	Yes	Artificial Preservatives	No
Artificial Flavour Enhancers	No	Artificial Sweeteners	Yes

DIET
SUITABILITY

Suitable for Coeliacs	Yes	Halal Diet	No
Kosher Diet	No	Vegetarian Diet	Suitable for
Vegan Diet	Suitable for		

NUTRITIONAL
INFORMATION

Each 100g/ml portion contains:



of your reference intake.

Typical values per 100g/ml : Energy 430kcal / 1806kj

Nutrient	per 100g/ml	RI per 100g/ml	per 23g/ml serving	RI per 23g/ml serving
Energy (kJ)	1806 kJ	22%	415.4 kJ	5%
Energy (kcal)	430 kcal	22%	98.9 kcal	5%
Fat	12.5 g	18%	2.9 g	4%
of which Saturates	1.3 g	7%	0.3 g	2%
of which Mono-unsaturates	3.2 g		0.7 g	
of which Polyunsaturates	5.9 g		1.4 g	
Carbohydrate	57 g	22%	13.1 g	5%
of which Sugars	4.5 g	5%	1 g	1%
Fibre	7.9 g		1.8 g	
Protein	18.3 g	37%	4.2 g	8%
Salt	0.81 g	14%	0.2 g	3%
Sodium	324 mg		74.5 mg	

Serving Size 23 g

SUPPLEMENTARY
NUTRITIONAL
INFORMATION

Trans Fats per 100 g/ml 0.1 g

HFSS (HIGH IN
FAT, SALT AND
SUGAR)
HANDLING &
STORAGE
INFORMATION

HFSS Status No

Directions For Use

Store in a cool dry place

Storage Instructions

Store in a cool dry place

Shelf Life from Time of Production 273 Days

ACCREDITATIONS/
CERTIFICATIONS/
ASSURANCE
SCHEMES
ORIGIN

BRCGS Certified

Other Accreditation

Product Country of Origin/Place of United Kingdom

Provenance

PRODUCT
CHARACTERISTICS

Standards Testing

Do you undertake trend analysis of microbiological results? Yes

Is shelf life testing undertaken? Yes

Microbiological Standards

Organism	Description	Frequency	Target	Maximum	Sample (g or ml)
E. Coli (cfu/g or ml)		Every Batch	<10	10	23
Enterobacteriaceae (cfu/g or ml)		Every Batch	<10	10	23
Staphylococcus Aureus (cfu/g or ml)		Every Batch	<20	20	23
Salmonella (cfu/g or ml)		Every Batch	<1	1	25

CONFIGURATION

Case Configuration

Inner Pack Configuration

Total Quantity of Inner Components in Outer Case 24 Units

PRODUCT
WEIGHTS

Inner Component

Variable Weight Consumer Item No
Inner Component Weight 23 g
Net Drained Weight 0.023 kg

Outer Case

Outer Case Gross Weight 0.85 kg
Outer Case Net Weight 0.55 kg

PRODUCT
DIMENSIONS

Inner Component

Inner Component Depth 32 mm
Inner Component Width 130 mm
Inner Component Height 140 mm

Outer Case

Outer Case Depth 400 mm
Outer Case Width 300 mm
Outer Case Height 145 mm

PALLET
INFORMATION

Quantity of Cases Per Pallet Layer 10 Cases
Quantity of Layers Per Pallet 9 Layers
Quantity of Cases Per Pallet 90 Cases
Pallet Height 1.5 MTR
Pallet Gross Weight 95 kg

PACKAGING

Inner Component Packaging

Type	Materials	Weight	Recycled Plastic %	Recyclable	Returnable	Composite
Film	Plastic	0.01 g	100.00 %			

Outer Case Packaging

Type	Materials	Weight	Recycled Plastic %	Recyclable	Returnable	Composite
Case	Paper/Cardboard	225 g	- %			

OTHER
INFORMATION

Commodity Code

2008999190

CONTACT
INFORMATION

Address

Henderson's Relish
2A Parkway Rise
Sheffield
South Yorkshire
S9 4WQ
United Kingdom

P. (Phone) 01142425724

The information on the [Erudus System](#) has been supplied by the manufacturers of the products and, whilst the owners of the Erudus System take steps to ensure the information is regularly updated, they give no warranty and no guarantee that the information is accurate. Product information and ingredients may change, please always read product labels carefully in addition to using the information provided by Erudus.

We do not accept liability for any inaccuracies or incorrect information contained on this site.
Please visit <http://www.erudus.com/terms-and-conditions> for full terms and conditions.