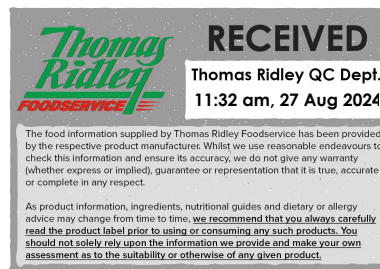


Changed Aug 20, 2024 08:52

Reviewed Aug 20, 2024 08:52

Erudus ID 306ee06f68f24c3db3867984c1e8c2c9

Version 3.0



12502

# STRAWBERRY & MASCARPONE LOAF (2x11 ptns)

Strawberry & Mascarpone Loaf 1x1200g

## PRODUCT DESCRIPTION

Marbled strawberry and vanilla flavour sponges topped with a mascarpone icing and decorated with freeze dried strawberry pieces.

Brand	The Handmade Cake Co.
Manufacturer Product Code	F071584
Product Type	Food
Product Category	Cakes and Tarts
Storage Type	Frozen
Erudus ID	306ee06f68f24c3db3867984c1e8c2c9
Specification Type	Bakery Products
Outer Case GTIN	5060044071584



## INGREDIENTS

### Ingredient Declaration

Sugar, **WHEAT** Flour (with Calcium Carbonate, Niacin, Iron, Thiamin), Pasteurised Free Range **EGG**, Rapeseed Oil, Water, Mascarpone Cheese (5%) (**MILK**), Skimmed **MILK** Powder, Vegetable Margarine [Palm Oil, Rapeseed Oil, Water, Salt, Emulsifier (E471), Natural Flavouring], Baking Powder [Raising Agents (E575, E500(ii), E336(i)), Maize Starch], Humectant (Vegetable Glycerine), Vanilla Flavouring (0.8%), Strawberry Flavouring (0.2%), Concentrated Lemon Juice, Freeze Dried Strawberry Pieces (0.2%), Modified Maize Starch, Colour (Anthocyanins), Concentrated Beetroot Juice.

## ALLERGENS

Product Contains:

Celery/Celery	No
Cereals Containing Gluten	Yes
Barley	No
Oats	No
Rye	No
Wheat (including Spelt and Khorasan)	Yes
Crustacea	No
Eggs	Yes
Fish	No
Lupin	No
Milk	Yes
Molluscs	No

Mustard	No
Nuts (Tree)	May Contain
Almond nuts	May Contain
Brazil nuts	May Contain
Cashew nuts	May Contain
Hazelnuts	May Contain
Macadamia (Queensland) nuts	May Contain
Pecan nuts	May Contain
Pistachio nuts	May Contain
Walnuts	May Contain
Peanuts	No
Sesame Seeds	No
Soybeans	No
Sulphur Dioxide and Sulphites	No

Risk Source:

### Additional Allergen Information

For allergens, including cereals containing gluten, see ingredients in BOLD. This product may contain traces of nuts as it has been made in a bakery that uses nut ingredients.

SUPPLEMENTARY  
INGREDIENT  
INFORMATION

<b>Palm Oil</b>	Yes
<b>Hydrogenated Vegetable Oil/Fat</b>	No
<b>GM Protein/DNA</b>	No

ADDITIVES

*Product Contains:*

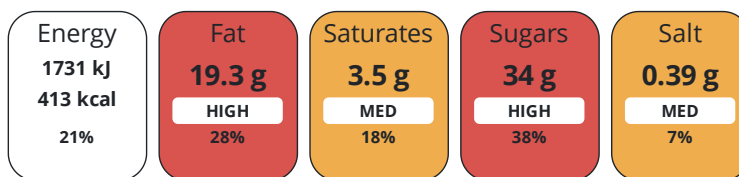
<b>Artificial Antioxidants</b>	No	<b>Artificial Flavourings</b>	No
<b>Artificial Colours</b>	No	<b>Artificial Preservatives</b>	No
<b>Artificial Flavour Enhancers</b>	No	<b>Artificial Sweeteners</b>	No

DIET  
SUITABILITY

<b>Vegan Diet</b>	No	<b>Vegetarian Diet</b>	Suitable for
<b>Halal Diet</b>	No	<b>Kosher Diet</b>	No

NUTRITIONAL  
INFORMATION

Each 100g/ml portion contains:



of your reference intake.

Typical values per 100g/ml : Energy 413kcal / 1731kJ

Nutrient	per 100g	RI per 100g	per 60g serving	RI per 60g serving
<b>Energy (kJ)</b>	1731 kJ	21%	1038.6 kJ	12%
<b>Energy (kcal)</b>	413 kcal	21%	247.8 kcal	12%
<b>Fat</b>	19.3 g	28%	11.6 g	17%
<b>of which Saturates</b>	3.5 g	18%	2.1 g	11%
<b>Carbohydrate</b>	53.3 g	21%	32 g	12%
<b>of which Sugars</b>	34 g	38%	20.4 g	23%
<b>Fibre</b>	1 g		0.6 g	
<b>Protein</b>	5.7 g	11%	3.4 g	7%
<b>Salt</b>	0.39 g	7%	0.2 g	3%

**Serving Size** 60 g

SUPPLEMENTARY  
NUTRITIONAL  
INFORMATION

HFSS (HIGH IN  
FAT, SALT AND  
SUGAR)

**HFSS Status** Yes

HANDLING &  
STORAGE  
INFORMATION

**Directions For Use**

Remove wrapping before defrosting. Defrost at room temperature for 4 hours. Serve at room temperature. Once defrosted store in a cool dry place. Do not refreeze once defrosted. Consume within 3 days.

**Storage Instructions**

Keep Frozen, store at -18°C or below

**Shelf Life from Time of Production** 365 Days

ACCREDITATIONS/  
CERTIFICATIONS/  
ASSURANCE  
SCHEMES  
ORIGIN

**BRCGS Certified**

**Roundtable of Sustainable Palm Oil (RSPO)**

**Product Country of Origin/Place of Provenance** United Kingdom

PRODUCT CHARACTERISTICS

Standards Testing

**Do you undertake trend analysis of microbiological results?** Yes

**Is shelf life testing undertaken?** Yes

Microbiological Standards

Organism	Description	Frequency	Target	Maximum	Sample (g or ml)
Enterobacteriaceae (cfu/g or ml)		Annually	<100	10000	1
Listeria SPP (cfu/g or ml)	Detected/Not Detected /25g	Annually	=0	0	25
Staphylococcus Aureus (cfu/g or ml)		Annually	<20	10000	20
Salmonella (cfu/g or ml)	Detected/Not Detected /25g	Annually	=0	0	25
Yeast (cfu/g or ml)		Annually	<100	10000	100
Moulds (cfu/g or ml)		Annually	<100	10000	100

Physical Standards

Test	Description	Frequency	Target	Range	Sample (g or ml)
Dimensions Height (mm)	3 per batch	Every Batch	>60	60 to 90	60
Weight (g)	3 per batch	Every Batch	>1200	1200 to 1600	1200

CONFIGURATION

Case Configuration

Inner Pack Configuration

**Total Quantity of Inner Components in Outer Case** 1 Units

**Count per Inner Component** 22

PRODUCT WEIGHTS

Inner Component

**Variable Weight Consumer Item** No  
**Inner Component Weight** 1200 g

Outer Case

**Outer Case Gross Weight** 1.31 kg  
**Outer Case Net Weight** 1.2 kg

PRODUCT DIMENSIONS

Inner Component

**Inner Component Depth** 200 mm  
**Inner Component Width** 100 mm  
**Inner Component Height** 60 mm

Outer Case

**Outer Case Depth** 218 mm  
**Outer Case Width** 218 mm  
**Outer Case Height** 96 mm

PALLET INFORMATION

**Quantity of Cases Per Pallet Layer** 20 Cases  
**Quantity of Layers Per Pallet** 12 Layers  
**Quantity of Cases Per Pallet** 240 Cases

**Pallet Type** UK Standard Pallet  
**Pallet Height** 1.3 MTR  
**Pallet Gross Weight** 340 kg

PACKAGING

Inner Component Packaging

Type	Materials	Weight	Recycled Plastic %	Recyclable	Returnable	Composite
Film	Plastic	8 g	0.00 %			

Outer Case Packaging

Type	Materials	Weight	Recycled Plastic %	Recyclable	Returnable	Composite
Case	Plastic	2 g	0.00 %			
Case	Paper/Cardboard	94 g	- %			

Transport Packaging

Type	Materials	Weight	Recycled Plastic %	Recyclable	Returnable	Composite
Other	Plastic	1.25 g	0.00 %			
Other	Paper/Cardboard	1.25 g	- %			
Other	Wood	104.2 g	- %			

OTHER INFORMATION

<b>Intrastat/Taric Code</b>	1905907000
<b>Commodity Code</b>	19059070

**Manufacturer Comments**

Transit packaging given per case based on a full pallet load.

CONTACT INFORMATION

Address

The Handmade Cake Co.  
The Bakery  
Gardner Road  
Maidenhead  
Berkshire  
SL6 7TU  
United Kingdom

Technical Contact

Technical Team  
Maidenhead.Technical@mdesserts.com

P: (Phone) 01628 770908 Ext. 1052

P: (Phone) 01628 770908

Complaints Contact

Technical Team  
Maidenhead.Technical@mdesserts.com

P: (Phone) 01628 770908 Ext. 1052

The information on the [Erudus System](#) has been supplied by the manufacturers of the products and, whilst the owners of the Erudus System take steps to ensure the information is regularly updated, they give no warranty and no guarantee that the information is accurate. Product information and ingredients may change, please always read product labels carefully in addition to using the information provided by Erudus.

We do not accept liability for any inaccuracies or incorrect information contained on this site.  
Please visit <http://www.erudus.com/terms-and-conditions> for full terms and conditions.