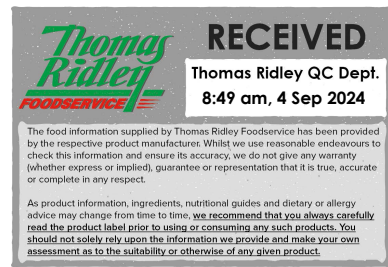


Changed Sep 03, 2024 13:41

Reviewed Sep 03, 2024 13:41

Erudus ID 41838d138e0944498034223d3987bc39

Version 7.0



12503

Sticky Toffee Pecan Loaf 2 x 11 ptn

Sticky Toffee Pecan Loaf 1x1.52kg

PRODUCT DESCRIPTION

A sticky, toffee flavour date loaf with pecan pieces, sandwiched with a toffee flavour icing. Topped with pecan pieces and finished with apricot jam.

Brand	The Handmade Cake Co.
Manufacturer Product Code	F071577
Product Type	Food
Product Category	Cakes and Tarts
Storage Type	Frozen
Erudus ID	41838d138e0944498034223d3987bc39
Specification Type	Bakery Products

Outer Case GTIN 5060044071577



INGREDIENTS

Ingredient Declaration

WHEAT Flour (with Calcium Carbonate, Niacin, Iron, Thiamin), Date Paste (16%) [Water, Dates, Rice Flour], Dark Brown Sugar [Sugar, Cane Molasses], Rapeseed Oil, Pasteurised Free Range **EGG**, Sugar, **PECAN NUTS** (5%), Chicory Root Fibre, Vegetable Margarine [Palm Oil, Rapeseed Oil, Water, Salt, Emulsifier (E471), Natural Flavouring], Full Fat Soft Cheese [Full Fat Soft Cheese (**MILK**), Thickener (Guar Gum)], Caramelised Sugar Syrup, Apricot Jam (0.9%) [Glucose-Fructose Syrup, Apricot Puree, Acidity Regulators (Citric Acid, Trisodium Citrate), Gelling Agent (Pectin)], Skimmed **MILK** Powder, Baking Powder [Raising Agents (E575, E500(ii), E336(i)), Maize Starch], Stabiliser (Guar Gum), Toffee Flavouring (0.3%), Water, Salt.

ALLERGENS

Product Contains:

Celery/Celery	No	Mustard	No
Cereals Containing Gluten	Yes	Nuts (Tree)	Yes
Barley	No	Almond nuts	May Contain
Oats	No	Brazil nuts	May Contain
Rye	No	Cashew nuts	May Contain
Wheat (including Spelt and Khorasan)	Yes	Hazelnuts	May Contain
Crustacea	No	Macadamia (Queensland) nuts	May Contain
Eggs	Yes	Pecan nuts	Yes
Fish	No	Pistachio nuts	May Contain
Lupin	No	Walnuts	May Contain
Milk	Yes	Peanuts	No
Molluscs	No	Sesame Seeds	No
		Soybeans	No
		Sulphur Dioxide and Sulphites	No

Risk Source:

Almond nuts (Risk Source)	Factory	Brazil nuts (Risk Source)	Raw Material
Cashew nuts (Risk Source)	Raw Material	Hazelnuts (Risk Source)	Factory
Macadamia nuts (Risk Source)	Raw Material	Pistachio nuts (Risk Source)	Factory
Walnuts (Risk Source)	Factory		

Allergen Statement On Pack

For allergens, including cereals containing gluten, see ingredients in BOLD.

SUPPLEMENTARY INGREDIENT INFORMATION

Palm Oil	Yes
Hydrogenated Vegetable Oil/Fat	No
GM Protein/DNA	No

ADDITIVES

Product Contains:

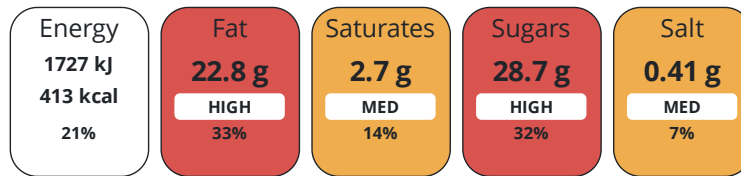
Artificial Antioxidants	No	Artificial Flavourings	No
Artificial Colours	No	Artificial Preservatives	No
Artificial Flavour Enhancers	No	Artificial Sweeteners	No

DIET SUITABILITY

Vegan Diet	No	Vegetarian Diet	Suitable for
Halal Diet	No	Kosher Diet	No

NUTRITIONAL INFORMATION

Each 100g/ml portion contains:



of your reference intake.

Typical values per 100g/ml : Energy 413kcal / 1727kJ

Nutrient	per 100g	RI per 100g	per 73g serving	RI per 73g serving
Energy (kJ)	1727 kJ	21%	1260.7 kJ	15%
Energy (kcal)	413 kcal	21%	301.5 kcal	15%
Fat	22.8 g	33%	16.6 g	24%
of which Saturates	2.7 g	14%	2 g	10%
Carbohydrate	45.8 g	18%	33.4 g	13%
of which Sugars	28.7 g	32%	21 g	23%
Fibre	3.5 g		2.6 g	
Protein	4.6 g	9%	3.4 g	7%
Salt	0.41 g	7%	0.3 g	5%

Serving Size	73 g
Serving Size Description	One slice of cake
Number of Servings	22 Servings

Source of Nutritional Information Calculation based on known values of ingredients

SUPPLEMENTARY NUTRITIONAL INFORMATION

HFSS (HIGH IN FAT, SALT AND SUGAR)

HFSS Status	Yes
HFSS Score	9

HANDLING &
STORAGE
INFORMATION

Directions For Use

Remove wrapping before defrosting. Defrost at room temperature for 4 hours. Serve at room temperature. Once defrosted store in a cool dry place. Do not refreeze once defrosted. Consume within 5 days.

Storage Instructions

Keep Frozen, store at -18°C or below

Storage Instructions After Opening

Once defrosted store in a cool dry place. Do not refreeze once defrosted. Consume within 5 days.

Shelf Life from Time of Production	365 Days
Shelf Life From Opening	5 Days
Shelf Life Once Defrosted	5 Days

ACCREDITATIONS/
CERTIFICATIONS/
ASSURANCE
SCHEMES
ORIGIN

BRCGS Certified		BRCGS Food Safety	
B Corp Certification		Roundtable of Sustainable Palm Oil (RSPO)	
Product Country of Origin/Place of Provenance	United Kingdom		

PRODUCT
CHARACTERISTICS

Standards Testing			
Do you undertake trend analysis of microbiological results?	Yes	Is shelf life testing undertaken?	Yes
		Commercially Sterile	No

Microbiological Standards

Organism	Description	Frequency	Target	Maximum	Sample (g or ml)
Enterobacteriaceae (cfu/g or ml)		Annually	<100	10000	1
Listeria SPP (cfu/g or ml)	Detected/Not Detected /25g	Annually	=0	0	25
Staphylococcus Aureus (cfu/g or ml)		Annually	<20	10000	1
Salmonella (cfu/g or ml)	Detected/Not Detected /25g	Annually	=0	0	25
Yeast (cfu/g or ml)		Annually	<100	10000	1
Moulds (cfu/g or ml)		Annually	<100	10000	1

Physical Standards

Test	Description	Frequency	Target	Range	Sample (g or ml)
Dimensions Height (mm)	3 per batch	Every Batch	>55	55 to 90	-
Weight (g)	3 per batch	Hourly	<1520	1520 to 2040	-

SUPPLEMENTARY INFORMATION

Egg Source	Free-range
Case Configuration	
Variable Inner Components in Outer Case	No
Total Quantity of Inner Components in Outer Case	1 Units
Is the Outer Case Splittable?	No

CONFIGURATION

Inner Pack Configuration	
Is Inner Pack Splittable?	No

PRODUCT WEIGHTS

Inner Component	
Variable Weight Consumer Item	No
Inner Component Weight	1.52 kg
e mark	No
Outer Case	
Outer Case Gross Weight	1.61 kg
Outer Case Net Weight	1.52 kg

PRODUCT DIMENSIONS

Inner Component	
Inner Component Depth	198 mm
Inner Component Width	90 mm
Inner Component Height	55 mm
Outer Case	
Outer Case Depth	218 mm
Outer Case Width	218 mm
Outer Case Height	96 mm

PALLET INFORMATION

Quantity of Cases Per Pallet Layer	20 Cases	Pallet Type	UK Standard Pallet
Quantity of Layers Per Pallet	12 Layers	Pallet Height	1.3 MTR
Quantity of Cases Per Pallet	240 Cases	Pallet Gross Weight	417 kg

PACKAGING

Inner Component Packaging						
Type	Materials	Weight	Recycled Plastic %	Recyclable	Returnable	Composite
Film	Plastic / PP (Polypropylene)	8 g	0 %	Yes	No	No
Outer Case Packaging						
Type	Materials	Weight	Recycled Plastic %	Recyclable	Returnable	Composite
Label	Paper/Cardboard / Paper	2 g	- %	No	No	Yes
Case	Paper/Cardboard / Corrugated	88 g	- %	Yes	No	No
Transport Packaging						
Type	Materials	Weight	Recycled Plastic %	Recyclable	Returnable	Composite
Layer Card	Paper/Cardboard / Corrugated	300 g	- %	Yes	No	No
Pallet Wrap	Plastic / LDPE (Low Density Polyethylene)	300 g	0 %	Yes	No	No

OTHER INFORMATION

Intrastat/Taric Code	1905907000	Value Added Tax Rate	0%
Commodity Code	19059070		

CONTACT
INFORMATION

Address

The Handmade Cake Co.
The Bakery
Gardner Road
Maidenhead
Berkshire
SL6 7TU
United Kingdom

P: (Phone) 01628 770908

Complaints Contact

Technical Team
Maidenhead.Technical@mdesserts.com

P: (Phone) 01628 770908 Ext. 1052

Technical Contact

Technical Team
Maidenhead.Technical@mdesserts.com

P: (Phone) 01628 770908 Ext. 1052

The information on the [Erudus System](#) has been supplied by the manufacturers of the products and, whilst the owners of the Erudus System take steps to ensure the information is regularly updated, they give no warranty and no guarantee that the information is accurate. Product information and ingredients may change, please always read product labels carefully in addition to using the information provided by Erudus.

We do not accept liability for any inaccuracies or incorrect information contained on this site.
Please visit <http://www.erudus.com/terms-and-conditions> for full terms and conditions.