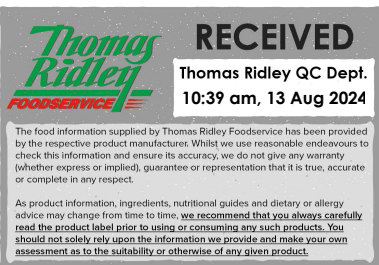


Changed Aug 13, 2024 08:22

Reviewed Aug 13, 2024 08:22

Erudus ID 32c8d3dacf404ed58bb3fcbd10ef6381

Version 2.0



12508

White Chocolate & Raspberry Torte; PP14

White Chocolate & Raspberry Torte 1x1452g

PRODUCT DESCRIPTION

Vanilla flavour sponge base topped with a tangy raspberry layer, sweet white chocolate mousse and a swirl of raspberry sauce, finished with raspberries and a dusting of sweet snow; pre-cut, 14 portions.

Brand	Mademoiselle Desserts (Taunton)
Manufacturer Product Code	F32700
Manufacturer Version	2
Number	
Product Type	Food
Product Category	Desserts
Storage Type	Frozen
Erudus ID	32c8d3dacf404ed58bb3fcbd10ef6381
Specification Type	Bakery Products
Outer Case GTIN	5010823523476



INGREDIENTS

Ingredient Declaration

White Chocolate (16%) (Sugar, Whole MILK Powder, Cocoa Butter, Skimmed MILK Powder, Emulsifier (SOYA Lecithin), Natural Flavouring), Sugar, EGG, Full Fat Soft Cheese (9%) (Cream (MILK), Water, Skimmed MILK Powder, Cornflour, BUTTERMILK Powder, Salt), Sweetened Condensed Milk (MILK, Sugar), Raspberry Sauce (9%) (Raspberry Puree, Sugar, Glucose Syrup, Modified Maize Starch, Water, Acidity Regulator (Citric Acid), Colour (Anthocyanins), Natural Flavouring), Raspberries (8.7%), Cream (MILK), WHEAT Flour (WHEAT Flour, Calcium Carbonate, Niacin, Iron, Thiamin), Glucose Syrup, Rapeseed Oil, Skimmed MILK Powder, Modified Maize Starch, Humectant (Glycerol), Margarine (Palm Oil, Rapeseed Oil, Water, Emulsifier (Mono- and Diglycerides of Fatty Acids)), Thickener (Pectin), Lemon Juice, Natural Flavouring, Emulsifiers (Mono- and Diglycerides of Fatty Acids, Polyglycerol Esters Of Fatty Acids, Sodium Stearoyl Lactylate), Raising Agents (Disodium Diphosphate, Potassium Hydrogen Carbonate), WHEAT Gluten, Acidity Regulators (Citric Acid, Potassium Hydroxide), Colours (Anthocyanins, Algal Carotenes), Dextrose, Stabilisers (Xanthan Gum, Locust Bean Gum, Guar Gum), Maize Starch, Palm Oil, Preservative (Calcium Propionate).

ALLERGENS

Product Contains:

Celery/Celeriac	No	Mustard	No
Cereals Containing Gluten	Yes	Nuts (Tree)	May Contain
Barley	No	Almond nuts	May Contain
Oats	No	Brazil nuts	No
Rye	No	Cashew nuts	No
Wheat (including Spelt and Khorasan)	Yes	Hazelnuts	May Contain
Crustacea	No	Macadamia (Queensland) nuts	No
Eggs	Yes	Pecan nuts	May Contain
Fish	No	Pistachio nuts	May Contain
Lupin	No	Walnuts	May Contain
Milk	Yes	Peanuts	No
Molluscs	No	Sesame Seeds	No
		Soybeans	Yes
		Sulphur Dioxide and Sulphites	No

Risk Source:

Tree Nuts (Risk Source)	Line	Almond nuts (Risk Source)	Line
Hazelnuts (Risk Source)	Line	Pecan nuts (Risk Source)	Line
Pistachio nuts (Risk Source)	Line	Walnuts (Risk Source)	Line

Allergen Statement On Pack

Allergens in the ingredients list (including cereals containing gluten) are shown in CAPITALS. May contain traces of nuts.

SUPPLEMENTARY
INGREDIENT
INFORMATION

Palm Oil	Yes
Hydrogenated Vegetable Oil/Fat	No
GM Protein/DNA	No

ADDITIVES

Product Contains:

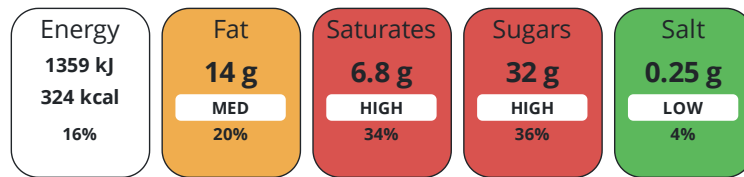
Artificial Antioxidants	No	Artificial Flavourings	No
Artificial Colours	No	Artificial Preservatives	Yes
Artificial Flavour Enhancers	No	Artificial Sweeteners	No

DIET
SUITABILITY

Vegan Diet	No	Vegetarian Diet	Suitable for
Halal Diet	No	Kosher Diet	No

NUTRITIONAL
INFORMATION

Each 100g/ml portion contains:



of your reference intake.

Typical values per 100g/ml : Energy 324kcal / 1359kJ

Nutrient	per 100g	RI per 100g	per 103g serving	RI per 103g serving
Energy (kJ)	1359 kJ	16%	1399.8 kJ	17%
Energy (kcal)	324 kcal	16%	333.7 kcal	17%
Fat	14 g	20%	14.4 g	21%
of which Saturates	6.8 g	34%	7 g	35%
Carbohydrate	43 g	17%	44.3 g	17%
of which Sugars	32 g	36%	33 g	37%
Fibre	1.1 g		1.1 g	
Protein	5.1 g	10%	5.3 g	11%
Salt	0.25 g	4%	0.3 g	5%
Sodium	100 mg		103 mg	

Serving Size	103 g
Number of Servings	14 Servings

Source of Nutritional Information Manufacturers analysis

SUPPLEMENTARY
NUTRITIONAL
INFORMATION

Fibre Type Fibre AOAC

HFSS (HIGH IN
FAT, SALT AND
SUGAR)

HFSS Status	Yes
HFSS Score	17

HANDLING & STORAGE INFORMATION

Directions For Use

Remove all packaging and allow it to defrost in a refrigerator for approximately 6 hours or overnight. Alternatively, remove individual portions and allow to defrost for 3 hours in a refrigerator. Once defrosted keep covered in a refrigerator and consume within 48 hours. Do not refreeze once defrosted.

Storage Instructions

Keep frozen ant -18oC or colder.

Shelf Life from Time of Production 548 Days

ACCREDITATIONS/ CERTIFICATIONS/ ASSURANCE SCHEMES ORIGIN

BRCGS Certified

Roundtable of Sustainable Palm Oil (RSPO)

Product Country of Origin/Place of Provenance United Kingdom

Provenance

Additional Origin Details

Baked by Mademoiselle Desserts, Frobisher Way, Taunton, TA2 6AB, UK Part of Mademoiselle Desserts, 14 place Georges Pompidou, 78180 Montigny le Bretonneux, France.

PRODUCT CHARACTERISTICS

Standards Testing

Do you undertake trend analysis of microbiological results? Yes

Is shelf life testing undertaken? Yes

CONFIGURATION

Case Configuration

Inner Pack Configuration

Total Quantity of Inner Components in Outer Case 1 Units

Count per Inner Component 14

Is the Outer Case Splittable? No

PRODUCT WEIGHTS

Inner Component

Variable Weight Consumer Item No

Inner Component Weight 1452 g

Outer Case

Outer Case Gross Weight 1.61 kg

Outer Case Net Weight 1.43 kg

PRODUCT DIMENSIONS

Inner Component

Inner Component Depth 244 mm

Inner Component Width 244 mm

Inner Component Height 90 mm

Outer Case

Outer Case Depth 250 mm

Outer Case Width 250 mm

Outer Case Height 96 mm

PALLET INFORMATION

Quantity of Cases Per Pallet Layer 16 Cases

Pallet Type UK Standard Pallet

Quantity of Layers Per Pallet 15 Layers

Pallet Height 1.69 MTR

Quantity of Cases Per Pallet 240 Cases

Pallet Gross Weight 418.7 kg

PACKAGING

Inner Component Packaging

Type	Materials	Weight	Recycled Plastic %	Recyclable	Returnable	Composite
Film	Plastic	8 g	30.00 %			
Cakeboard	Paper/Cardboard / Carton Board	47.3 g	- %	No	No	

Outer Case Packaging

Type	Materials	Weight	Recycled Plastic %	Recyclable	Returnable	Composite
Tape	Plastic / PP (Polypropylene)	3 g	0.00 %	No	No	No
Case	Paper/Cardboard / Carton Board	121.2 g	- %	Yes	No	

Transport Packaging

Type	Materials	Weight	Recycled Plastic %	Recyclable	Returnable	Composite
Pallet Wrap	Plastic / LDPE (Low Density Polyethylene)	350 g	30.00 %	Yes	No	No
Other	Paper/Cardboard / Corrugated	1604 g	- %	Yes	No	No
Pallet	Wood	25000 g	- %	No	Yes	No

OTHER INFORMATION

Intrastat/Taric Code	1905907000
Commodity Code	19059070

CONTACT INFORMATION

<p>Address</p> <p>Mademoiselle Desserts (Taunton)</p> <p>Frobisher Way</p> <p>Bindon Road</p> <p>Taunton</p> <p>Somerset</p> <p>TA2 6AB</p> <p>England</p> <p><u>P: (Phone) 01823 257922</u></p>	<p>Technical Contact</p> <p>David Moran</p> <p>Technical Manager</p> <p>d.moran@mdesserts.com</p> <p><u>P: (Phone) 01823 257922</u></p>
<p>Complaints Contact</p> <p>David Moran</p> <p>Technical Manager</p> <p>d.moran@mdesserts.com</p> <p><u>P: (Phone) 01823 257922</u></p>	<p>Commercial Contact</p> <p>Clare Harrison</p> <p>National Account Manager</p> <p>c.harrison@mdesserts.com</p> <p><u>P: (Phone) 01823 257922</u></p>

The information on the [Erudus System](#) has been supplied by the manufacturers of the products and, whilst the owners of the Erudus System take steps to ensure the information is regularly updated, they give no warranty and no guarantee that the information is accurate. Product information and ingredients may change, please always read product labels carefully in addition to using the information provided by Erudus.

We do not accept liability for any inaccuracies or incorrect information contained on this site. Please visit <http://www.erudus.com/terms-and-conditions> for full terms and conditions.