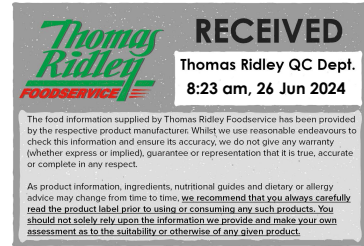


Changed Apr 25, 2024 18:16

Reviewed Apr 25, 2024 18:16

Erudus ID eed0d077bc2c4f9f917e6a0c5207997b

Version 1.0



LEVEL 3 MIXED MEALS & SOUPS

Level 3 Mixed Meals & Soups (Multipack)

PRODUCT DESCRIPTION

level 3 (liquidized) soups and main meals LEVEL 3 MIXED CASE MEALS & SOUPS CATB01 CHICKEN & POT PIE, CATB02 BEAN & VEGETABLE HOTPOT CATB04 TOMATO SOUP CATB05 CHICKEN SOUP

Brand	Simply Food Solutions
Manufacturer Product Code	L3MIXC
Product Type	Food
Product Category	Ready Meals
Storage Type	Frozen
Erudus ID	eed0d077bc2c4f9f917e6a0c5207997b
Specification Type	Generic

chicken & potato pie (CATB01) x6

Manufacturer Component Code CATB01



INGREDIENTS

Ingredient Declaration

Chicken (46%), water, potato (8%), (potato, sunflower oil, dextrose), onion, cream (**MILK**), béchamel skimmed MILK, hydrogenated vegetable fat palm, **MILK**, protein, modified potato starch, stabiliser: sodium alginate E401, salt, spices: white pepper, nutmeg, colour E160a), modified starch, butter oil **MILK** (vegetable oil [palm, rape], salt, emulsifier: E322, flavour: butter oil, colour: E160a), rapeseed oil, salt, black pepper.

ALLERGENS

Product Contains:

Celery/Celeriac	May Contain	Mustard	May Contain
Cereals Containing Gluten	May Contain	Nuts (Tree)	May Contain
Barley	May Contain	Almond nuts	May Contain
Oats	May Contain	Brazil nuts	May Contain
Rye	May Contain	Cashew nuts	May Contain
Wheat (including Spelt and Khorasan)	May Contain	Hazelnuts	May Contain
Crustacea	No	Macadamia (Queensland) nuts	May Contain
Eggs	May Contain	Pecan nuts	May Contain
Fish	No	Pistachio nuts	May Contain
Lupin	No	Walnuts	May Contain
Milk	Yes	Peanuts	May Contain
Molluscs	No	Sesame Seeds	May Contain
		Soybeans	May Contain
		Sulphur Dioxide and Sulphites	No

Risk Source:

Celery/Celeriac (Risk Source)	Raw Material
Barley (Risk Source)	Raw Material
Rye (Risk Source)	Raw Material
Eggs (Risk Source)	Raw Material
Tree Nuts (Risk Source)	Raw Material
Brazil nuts (Risk Source)	Raw Material
Hazelnuts (Risk Source)	Raw Material
Pecan nuts (Risk Source)	Raw Material
Walnuts (Risk Source)	Raw Material
Sesame Seeds (Risk Source)	Raw Material

Cereals Containing Gluten (Risk Source)	Raw Material
Oats (Risk Source)	Raw Material
Wheat (Risk Source)	Raw Material
Mustard (Risk Source)	Raw Material
Almond nuts (Risk Source)	Raw Material
Cashew nuts (Risk Source)	Raw Material
Macadamia nuts (Risk Source)	Raw Material
Pistachio nuts (Risk Source)	Raw Material
Peanuts (Risk Source)	Raw Material
Soybeans (Risk Source)	Raw Material

Additional Allergen Information

Non present

SUPPLEMENTARY
INGREDIENT
INFORMATION

Palm Oil	No
Hydrogenated Vegetable Oil/Fat	No
GM Protein/DNA	No

ADDITIVES

Product Contains:

Artificial Antioxidants	No
Artificial Colours	No
Artificial Flavour Enhancers	No

Artificial Flavourings	No
Artificial Preservatives	No
Artificial Sweeteners	No

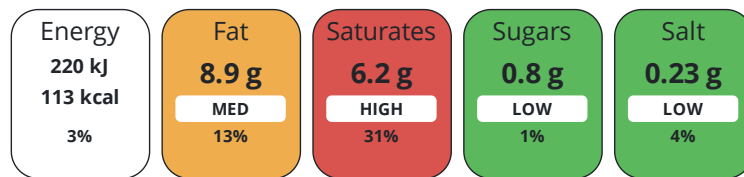
DIET
SUITABILITY

Vegan Diet	No
Halal Diet	No

Vegetarian Diet	No
Kosher Diet	No

NUTRITIONAL
INFORMATION

Each 100g/ml portion contains:



of your reference intake.

Typical values per 100g/ml : Energy 113kcal / 220kj

Nutrient	per 100g	RI per 100g	per 170g of prepared product
Energy (kj)	220 kj	3%	1049 kj
Energy (kcal)	113 kcal	6%	473 kcal
Fat	8.9 g	13%	14.2 g
of which Saturates	6.2 g	31%	4.4 g
Carbohydrate	4.8 g	2%	10.5 g
of which Sugars	0.8 g	1%	1.8 g
Fibre	0.2 g		0.4 g
Protein	8.9 g	18%	12.8 g
Salt	0.23 g	4%	0.51 g
Sodium	91 mg		461 mg

Source of Nutritional Information Manufacturers analysis

SUPPLEMENTARY
NUTRITIONAL
INFORMATION

HANDLING & STORAGE INFORMATION

Directions For Use

HEAT FROM FROZEN – PIERCE LID BEFORE COOKING Microwave: Heat at 800w for 2 minutes Conventional Oven: Place in a pre-heated oven, 150 °C for 30 minutes. Please leave to stand for 1 minute before opening HEAT MEAL TO CORE TEMPERATURE OF MINIMUM +75 °C Once heated, do not re heat.

Storage Instructions

Store at -18 ° C or colder in a clean environment Shelf Life, 15 months from manufacture Do not stack more than 6 cases high on a full pallet. Loose individual products do not stack more than two high and always store inside a container / box. Handle with care as C-pet meal containers become fragile at low temperature and will shatter if dropped / mishandled

Shelf Life from Time of Production 450 Days

ACCREDITATIONS/ CERTIFICATIONS/ ASSURANCE SCHEMES ORIGIN

BRCGS Certified

Product Country of Origin/Place of United Kingdom

Provenance

PRODUCT CHARACTERISTICS

Standards Testing

Do you undertake trend analysis of microbiological results? Yes

Is shelf life testing undertaken? Yes

CONFIGURATION

Case Configuration

Inner Pack Configuration

Variable Inner Components in Outer Case Yes

Quantity of Inner Components in Inner Pack 24

Total Quantity of Inner Components in Outer Case 24 Units

Total Quantity of Inner Packs in Outer Case 1 Units

Is the Outer Case Splittable? No

PRODUCT WEIGHTS

Inner Component

Inner Pack

Variable Weight Consumer Item Yes

Inner Pack Gross Weight 170 g

Outer Case

Outer Case Gross Weight 5.05 kg

Outer Case Net Weight 5.04 kg

PRODUCT DIMENSIONS

Inner Component

Inner Pack

Inner Component Depth 40 mm

Inner Pack Depth 170 mm

Inner Component Width 170 mm

Inner Pack Width 170 mm

Inner Component Height 170 mm

Inner Pack Height 40 mm

Outer Case

Outer Case Depth 36 mm

Outer Case Width 20 mm

Outer Case Height 24 mm

PALLET INFORMATION

Quantity of Cases Per Pallet Layer 15 Cases

Pallet Height 2 MTR

Quantity of Layers Per Pallet 8 Layers

Pallet Gross Weight 528.68 kg

Quantity of Cases Per Pallet 120 Cases

PACKAGING

Inner Component Packaging

Type	Materials	Weight	Recycled Plastic %	Recyclable	Returnable	Composite
Poly Treated PET/PE	Plastic / PET (Polyethylene Terethphalate)	10 g	- %	No	No	No

Inner Pack Packaging

Type	Materials	Weight	Recycled Plastic %	Recyclable	Returnable	Composite
Poly Treated PET/PE	Plastic	10 g	- %	No	No	No
Poly Treated PET/PE	Plastic / PET (Polyethylene Terethphalate)	10 g	- %			
Poly Treated PET/PE	Plastic / PET (Polyethylene Terethphalate)	10 g	- %	No	No	No

Outer Case Packaging

Type	Materials	Weight	Recycled Plastic %	Recyclable	Returnable	Composite
Box	Paper/Cardboard	30 g	- %	Yes	No	No

MARKETING INFORMATION

Marketing Description

IDDSI level 3 individual meals & soups

OTHER INFORMATION

Bean & vegetable casserole (CABTB02) x6

Manufacturer Component Code

CATB02



INGREDIENTS

Ingredient Declaration

Water, butter bean (13%), mixed vegetable (carrot, garden pea, green bean, corn kernel, broad bean), potato (potato, sunflower oil, dextrose), black eye bean (black eye bean, water, salt, ascorbic acid), onion, kidney bean (kidney bean, water, salt, calcium chloride), cream **MILK**, rapeseed oil, textured **SOYA**, flour, modified maize starch, salt, herb and spice, gravy browning (water, colour: E150c, salt).

ALLERGENS

Product Contains:

Celery/Celeriac	May Contain	Mustard	May Contain
Cereals Containing Gluten	No	Nuts (Tree)	May Contain
Barley	No	Almond nuts	May Contain
Oats	No	Brazil nuts	May Contain
Rye	No	Cashew nuts	May Contain
Wheat (including Spelt and Khorasan)	No	Hazelnuts	May Contain
Crustacea	No	Macadamia (Queensland) nuts	May Contain
Eggs	May Contain	Pecan nuts	May Contain
Fish	No	Pistachio nuts	May Contain
Lupin	No	Walnuts	May Contain
Milk	Yes	Peanuts	May Contain
Molluscs	No	Sesame Seeds	May Contain
		Soybeans	Yes
		Sulphur Dioxide and Sulphites	No

Risk Source:

Celery/Celeriac (Risk Source)	Raw Material	Eggs (Risk Source)	Raw Material
Mustard (Risk Source)	Raw Material	Tree Nuts (Risk Source)	Raw Material
Almond nuts (Risk Source)	Raw Material	Brazil nuts (Risk Source)	Raw Material
Cashew nuts (Risk Source)	Raw Material	Hazelnuts (Risk Source)	Raw Material
Macadamia nuts (Risk Source)	Raw Material	Pecan nuts (Risk Source)	Raw Material
Pistachio nuts (Risk Source)	Raw Material	Walnuts (Risk Source)	Raw Material
Peanuts (Risk Source)	Raw Material	Sesame Seeds (Risk Source)	Raw Material

Additional Allergen Information

Non present

SUPPLEMENTARY INGREDIENT INFORMATION

Palm Oil	Yes
Hydrogenated Vegetable Oil/Fat	No
GM Protein/DNA	No

ADDITIVES

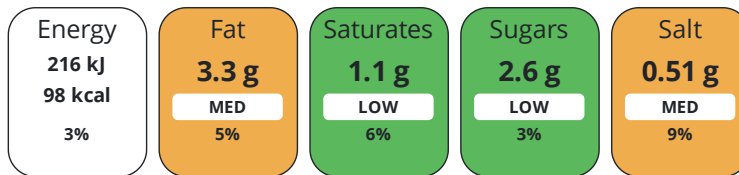
Product Contains:

Artificial Antioxidants	No	Artificial Flavourings	No
Artificial Colours	No	Artificial Preservatives	No
Artificial Flavour Enhancers	No	Artificial Sweeteners	No

DIET SUITABILITY

Vegan Diet	No	Vegetarian Diet	Suitable for
Halal Diet	No	Kosher Diet	No

Each 100g/ml portion contains:



of your reference intake.

Typical values per 100g/ml : Energy 98kcal / 216kj

Nutrient	per 100g	RI per 100g	per 170g of prepared product
Energy (kJ)	216 kJ	3%	790 kJ
Energy (kcal)	98 kcal	5%	359 kcal
Fat	3.3 g	5%	10.1 g
of which Saturates	1.1 g	6%	3.3 g
Carbohydrate	8 g	3%	17.6 g
of which Sugars	2.6 g	3%	5.7 g
Fibre	4.6 g		10.1 g
Protein	5.8 g	12%	12.8 g
Salt	0.51 g	9%	1.13 g
Sodium	205 mg		450 mg

Source of Nutritional Information Manufacturers analysis

SUPPLEMENTARY
NUTRITIONAL
INFORMATION

HANDLING &
STORAGE
INFORMATION

Directions For Use

HEAT FROM FROZEN –Microwave: Heat at 800w for 2 minutes Conventional Oven: Place in a pre-heated oven, 150 °C for 30 minutes. Please leave to stand for 1 minute before opening HEAT MEAL TO CORE TEMPERATURE OF MINIMUM +75 °C Once heated, do not re heat.

Storage Instructions

Store at -18 ° C or colder in a clean environment Shelf Life, 15 months from manufacture Do not stack more than 6 cases high on a full pallet. Loose individual products do not stack more than two high and always store inside a container / box. Handle with care as C-pet meal containers become fragile at low temperature and will shatter if dropped / mishandled

Shelf Life from Time of Production 450 Days

ORIGIN

Product Country of Origin/Place of Provenance United Kingdom

PRODUCT
CHARACTERISTICS

Standards Testing			
Do you undertake trend analysis of microbiological results?	Yes	Is shelf life testing undertaken?	Yes

CONFIGURATION

Case Configuration		Inner Pack Configuration	
Variable Inner Components in Outer Case	Yes	Quantity of Inner Components in Inner Pack	24
Total Quantity of Inner Components in Outer Case	24 Units		
Total Quantity of Inner Packs in Outer Case	1 Units		
Is the Outer Case Splittable?	No		

PRODUCT WEIGHTS

Inner Component	Variable Weight Consumer Item	Yes	Inner Pack	Inner Pack Gross Weight	170 g
Outer Case	Outer Case Gross Weight	5.05 kg		Outer Case Net Weight	5.04 kg

PRODUCT DIMENSIONS

Inner Component	Inner Component Depth	40 mm	Inner Pack	Inner Pack Depth	170 mm
	Inner Component Width	170 mm		Inner Pack Width	170 mm
	Inner Component Height	40 mm		Inner Pack Height	40 mm
	Inner Component Diameter	170 mm			
Outer Case	Outer Case Depth	36 mm			
	Outer Case Width	20 mm			
	Outer Case Height	24 mm			

PALLET INFORMATION

Quantity of Cases Per Pallet Layer	15 Cases	Pallet Height	2 MTR
Quantity of Layers Per Pallet	8 Layers	Pallet Gross Weight	528.68 kg
Quantity of Cases Per Pallet	120 Cases		

PACKAGING

Inner Component Packaging

Type	Materials	Weight	Recycled Plastic %	Recyclable	Returnable	Composite
Poly Treated PET/PE	Plastic / PET (Polyethylene Terethphalate)	10 g	- %	No	No	No

Inner Pack Packaging

Type	Materials	Weight	Recycled Plastic %	Recyclable	Returnable	Composite
Poly Treated PET/PE	Plastic	10 g	- %	No	No	No
Poly Treated PET/PE	Plastic / PET (Polyethylene Terethphalate)	10 g	- %			
Poly Treated PET/PE	Plastic / PET (Polyethylene Terethphalate)	10 g	- %	No	No	No

Outer Case Packaging

Type	Materials	Weight	Recycled Plastic %	Recyclable	Returnable	Composite
Box	Paper/Cardboard	30 g	- %	Yes	No	No

MARKETING INFORMATION

Marketing Description
IDDSI level 3 individual meals & soups

OTHER INFORMATION



INGREDIENTS

Ingredient Declaration

Water, **cream MILK** (22%), onion, tomato (7%), carrot, modified starch, vegetable stock (salt [anti caking agent: E535], modified maize starch, hydrolysed vegetable protein[**SOYA**, (colour: E150d), sugar, tomato, leek, carrot, onion [anti caking agent E470a], yeast, maltodextrin, rapeseed oil, turmeric, pepper [salt, spice extract, anti caking agent: E551, herb extract], nutmeg, citric acid), herbs and spices, sugar.

ALLERGENS

Product Contains:

Celery/Celery	May Contain	Mustard	May Contain
Cereals Containing Gluten	May Contain	Nuts (Tree)	May Contain
Barley	May Contain	Almond nuts	May Contain
Oats	May Contain	Brazil nuts	May Contain
Rye	May Contain	Cashew nuts	May Contain
Wheat (including Spelt and Khorasan)	May Contain	Hazelnuts	May Contain
Crustacea	No	Macadamia (Queensland) nuts	May Contain
Eggs	No	Pecan nuts	May Contain
Fish	No	Pistachio nuts	May Contain
Lupin	No	Walnuts	May Contain
Milk	Yes	Peanuts	May Contain
Molluscs	No	Sesame Seeds	May Contain
		Soybeans	Yes
		Sulphur Dioxide and Sulphites	No

Risk Source:

Celery/Celery (Risk Source)	Raw Material	Cereals Containing Gluten (Risk Source)	Raw Material
Barley (Risk Source)	Raw Material	Oats (Risk Source)	Raw Material
Rye (Risk Source)	Raw Material	Wheat (Risk Source)	Raw Material
Mustard (Risk Source)	Raw Material	Tree Nuts (Risk Source)	Raw Material
Almond nuts (Risk Source)	Raw Material	Brazil nuts (Risk Source)	Raw Material
Cashew nuts (Risk Source)	Raw Material	Hazelnuts (Risk Source)	Raw Material
Macadamia nuts (Risk Source)	Raw Material	Pecan nuts (Risk Source)	Raw Material
Pistachio nuts (Risk Source)	Raw Material	Walnuts (Risk Source)	Raw Material
Peanuts (Risk Source)	Raw Material	Sesame Seeds (Risk Source)	Raw Material

Additional Allergen Information

Non present

SUPPLEMENTARY INGREDIENT INFORMATION

Palm Oil	Yes
Hydrogenated Vegetable Oil/Fat	No
GM Protein/DNA	No

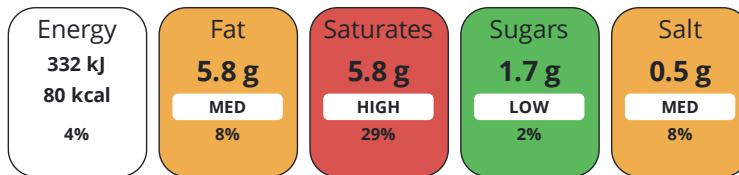
ADDITIVES

Product Contains:

Artificial Antioxidants	No	Artificial Flavourings	No
Artificial Colours	No	Artificial Preservatives	No
Artificial Flavour Enhancers	No	Artificial Sweeteners	No
Vegan Diet	No	Vegetarian Diet	Suitable for
Halal Diet	No	Kosher Diet	No

DIET SUITABILITY

Each 100g/ml portion contains:



of your reference intake.

Typical values per 100g/ml : Energy 80kcal / 332kj

Nutrient	per 100g	RI per 100g	per 170g of prepared product
Energy (kJ)	332 kJ	4%	562 kJ
Energy (kcal)	80 kcal	4%	136 kcal
Fat	5.8 g	8%	9.9 g
of which Saturates	5.8 g	29%	4.4 g
Carbohydrate	5.5 g	2%	9.4 g
of which Sugars	1.7 g	2%	2.9 g
Fibre	0.8 g		1.3 g
Protein	1.2 g	2%	1.5 g
Salt	0.5 g	8%	0.86 g
Sodium	200 mg		340 mg

Source of Nutritional Information Manufacturers analysis

SUPPLEMENTARY
NUTRITIONAL
INFORMATION

HANDLING &
STORAGE
INFORMATION

Directions For Use

HEAT FROM FROZEN – PIERCE LID BEFORE COOKING Microwave: Heat at 800w for 2 minutes Conventional Oven: Place in a pre-heated oven, 150 °C for 30 minutes. Please leave to stand for 1 minute before opening HEAT MEAL TO CORE TEMPERATURE OF MINIMUM +75 °C Once heated, do not re heat.

Storage Instructions

Store at -18 ° C or colder in a clean environment Shelf Life, 15 months from manufacture Do not stack more than 6 cases high on a full pallet. Loose individual products do not stack more than two high and always store inside a container / box. Handle with care as C-pet meal containers become fragile at low temperature and will shatter if dropped / mishandled

Shelf Life from Time of Production 450 Days

ORIGIN

Product Country of Origin/Place of United Kingdom

Provenance

PRODUCT
CHARACTERISTICS

Standards Testing

Do you undertake trend analysis of microbiological results? Yes

Is shelf life testing undertaken? Yes

CONFIGURATION

Case Configuration

Inner Pack Configuration

Variable Inner Components in Outer Case Yes

Quantity of Inner Components in Inner 24

Total Quantity of Inner Components in 24 Units

Pack

Outer Case

Total Quantity of Inner Packs in Outer 1 Units

Case

Is the Outer Case Splittable? No

PRODUCT WEIGHTS

Inner Component	Variable Weight Consumer Item	Yes	Inner Pack	Inner Pack Gross Weight	170 g
Outer Case	Outer Case Gross Weight	5.05 kg		Outer Case Net Weight	5.04 kg

PRODUCT DIMENSIONS

Inner Component	Inner Component Depth	40 mm	Inner Pack	Inner Pack Depth	170 mm
	Inner Component Width	170 mm		Inner Pack Width	170 mm
	Inner Component Height	40 mm		Inner Pack Height	40 mm
	Inner Component Diameter	170 mm			
Outer Case	Outer Case Depth	36 mm			
	Outer Case Width	20 mm			
	Outer Case Height	24 mm			

PALLET INFORMATION

Quantity of Cases Per Pallet Layer	15 Cases	Pallet Height	2 MTR
Quantity of Layers Per Pallet	8 Layers	Pallet Gross Weight	528.68 kg
Quantity of Cases Per Pallet	120 Cases		

PACKAGING

Inner Component Packaging							
Type	Materials	Weight	Recycled Plastic %	Recyclable	Returnable	Composite	
Poly Treated PET/PE	Plastic / PET (Polyethylene Terethphalate)	10 g	- %	No	No	No	
Inner Pack Packaging							
Type	Materials	Weight	Recycled Plastic %	Recyclable	Returnable	Composite	
Poly Treated PET/PE	Plastic	10 g	- %	No	No	No	
Poly Treated PET/PE	Plastic / PET (Polyethylene Terethphalate)	10 g	- %				
Poly Treated PET/PE	Plastic / PET (Polyethylene Terethphalate)	10 g	- %	No	No	No	
Outer Case Packaging							
Type	Materials	Weight	Recycled Plastic %	Recyclable	Returnable	Composite	
Box	Paper/Cardboard	30 g	- %	Yes	No	No	

MARKETING INFORMATION

Marketing Description
IDDSI level 3 individual meals & soups

OTHER INFORMATION

chicken soup (CATB05) x6

Manufacturer Component Code

CATB05



INGREDIENTS

Ingredient Declaration

Water, cream MILK (19%), chicken (16%), onion, rapeseed oil, modified starch, vegetable stock (salt [anti caking agent: E535], modified maize starch, hydrolysed vegetable protein **SOYA**, colour: E150d, sugar, tomato, leek, carrot, onion [anti caking agent: E470a], yeast, maltodextrin, rapeseed oil, turmeric, pepper [salt, spice extract, anti caking agent: E551, herb extract], nutmeg, citric acid), white pepper.

ALLERGENS

Product Contains:

Celery/Celериac	May Contain
Cereals Containing Gluten	No
Barley	No
Oats	No
Rye	No
Wheat (including Spelt and Khorasan)	No
Crustacea	No
Eggs	No
Fish	No
Lupin	No
Milk	Yes
Molluscs	No

Risk Source:

Celery/Celериac (Risk Source)	Raw Material
Tree Nuts (Risk Source)	Raw Material
Brazil nuts (Risk Source)	Raw Material
Hazelnuts (Risk Source)	Raw Material
Pecan nuts (Risk Source)	Raw Material
Walnuts (Risk Source)	Raw Material
Sesame Seeds (Risk Source)	Raw Material

Additional Allergen Information

Non present

Palm Oil	Yes
Hydrogenated Vegetable Oil/Fat	No
GM Protein/DNA	No

SUPPLEMENTARY INGREDIENT INFORMATION

ADDITIVES

Product Contains:

Artificial Antioxidants	No
Artificial Colours	No
Artificial Flavour Enhancers	No

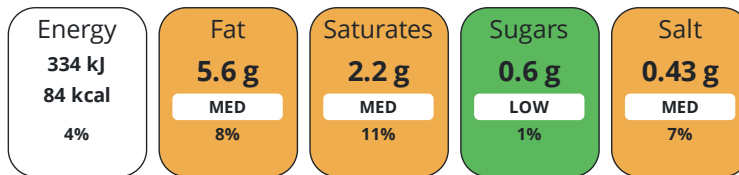
DIET SUITABILITY

Vegan Diet	No
Halal Diet	No

Mustard	May Contain
Nuts (Tree)	May Contain
Almond nuts	May Contain
Brazil nuts	May Contain
Cashew nuts	May Contain
Hazelnuts	May Contain
Macadamia (Queensland) nuts	May Contain
Pecan nuts	May Contain
Pistachio nuts	May Contain
Walnuts	May Contain
Peanuts	May Contain
Sesame Seeds	May Contain
Soybeans	Yes
Sulphur Dioxide and Sulphites	May Contain

Mustard (Risk Source)	Raw Material
Almond nuts (Risk Source)	Raw Material
Cashew nuts (Risk Source)	Raw Material
Macadamia nuts (Risk Source)	Raw Material
Pistachio nuts (Risk Source)	Raw Material
Peanuts (Risk Source)	Raw Material
Sulphur Dioxide and Sulphites (Risk Source)	Raw Material

Each 100g/ml portion contains:



of your reference intake.

Typical values per 100g/ml : Energy 84kcal / 334kj

Nutrient	per 100g	RI per 100g	per 170g of prepared product
Energy (kJ)	334 kJ	4%	534 kJ
Energy (kcal)	84 kcal	4%	136 kcal
Fat	5.6 g	8%	9.5 g
of which Saturates	2.2 g	11%	3.7 g
Carbohydrate	7.7 g	3%	4.5 g
of which Sugars	0.6 g	1%	0 g
Fibre	0.1 g		0.1 g
Protein	3.7 g	7%	6.4 g
Salt	0.43 g	7%	0.86 g
Sodium	171 mg		340 mg

Source of Nutritional Information Manufacturers analysis

SUPPLEMENTARY
NUTRITIONAL
INFORMATION

HANDLING &
STORAGE
INFORMATION

Directions For Use

HEAT FROM FROZEN – PIERCE LID BEFORE COOKING Microwave: Heat at 800w for 2 minutes Conventional Oven: Place in a pre-heated oven, 150 °C for 30 minutes. Please leave to stand for 1 minute before opening HEAT MEAL TO CORE TEMPERATURE OF MINIMUM +75 °C Once heated, do not re heat.

Storage Instructions

Store at -18 ° C or colder in a clean environment Shelf Life, 15 months from manufacture Do not stack more than 6 cases high on a full pallet. Loose individual products do not stack more than two high and always store inside a container / box. Handle with care as C-pet meal containers become fragile at low temperature and will shatter if dropped / mishandled

Shelf Life from Time of Production 450 Days

ORIGIN

Product Country of Origin/Place of United Kingdom

Provenance

PRODUCT
CHARACTERISTICS

Standards Testing

Do you undertake trend analysis of Yes
microbiological results?

Is shelf life testing undertaken? Yes

CONFIGURATION

Case Configuration

Inner Pack Configuration

Variable Inner Components in Outer Case Yes

Quantity of Inner Components in Inner 24

Total Quantity of Inner Components in 24 Units

Pack

Outer Case

Total Quantity of Inner Packs in Outer 1 Units

Case

Is the Outer Case Splittable? No

PRODUCT WEIGHTS

Inner Component	Variable Weight Consumer Item	Yes	Inner Pack	Inner Pack Gross Weight	170 g
Outer Case	Outer Case Gross Weight	5.05 kg		Outer Case Net Weight	5.04 kg

PRODUCT DIMENSIONS

Inner Component	Inner Component Depth	40 mm	Inner Pack	Inner Pack Depth	170 mm
	Inner Component Width	170 mm		Inner Pack Width	170 mm
	Inner Component Height	40 mm		Inner Pack Height	40 mm
	Inner Component Diameter	170 mm			
Outer Case	Outer Case Depth	36 mm			
	Outer Case Width	20 mm			
	Outer Case Height	24 mm			

PALLET INFORMATION

Quantity of Cases Per Pallet Layer	15 Cases	Pallet Height	2 MTR
Quantity of Layers Per Pallet	8 Layers	Pallet Gross Weight	528.68 kg
Quantity of Cases Per Pallet	120 Cases		

PACKAGING

Inner Component Packaging

Type	Materials	Weight	Recycled Plastic %	Recyclable	Returnable	Composite
Poly Treated PET/PE	Plastic / PET (Polyethylene Terethphalate)	10 g	- %	No	No	No

Inner Pack Packaging

Type	Materials	Weight	Recycled Plastic %	Recyclable	Returnable	Composite
Poly Treated PET/PE	Plastic	10 g	- %	No	No	No
Poly Treated PET/PE	Plastic / PET (Polyethylene Terethphalate)	10 g	- %			
Poly Treated PET/PE	Plastic / PET (Polyethylene Terethphalate)	10 g	- %	No	No	No

Outer Case Packaging

Type	Materials	Weight	Recycled Plastic %	Recyclable	Returnable	Composite
Box	Paper/Cardboard	30 g	- %	Yes	No	No

MARKETING INFORMATION

Marketing Description
IDDSI level 3 individual meals & soups

OTHER INFORMATION

CONTACT
INFORMATION

Address

Simply Food Solutions
Eldon Street
South Shields
Newcastle
Tyne and Wear
NE33 5BZ
United Kingdom

P: (Phone) 01914560456

Complaints Contact

Fiona Gleghorn
Head of Technical
fiona.gleghorn@simplyfoodsolutions.co.uk

P: (Phone) 077745648777

Technical Contact

Fiona Gleghorn
Head of Technical
fiona.gleghorn@simplyfoodsolutions.co.uk

P: (Phone) 07745648777

The information on the [Erudus System](#) has been supplied by the manufacturers of the products and, whilst the owners of the Erudus System take steps to ensure the information is regularly updated, they give no warranty and no guarantee that the information is accurate. Product information and ingredients may change, please always read product labels carefully in addition to using the information provided by Erudus.

We do not accept liability for any inaccuracies or incorrect information contained on this site.
Please visit <http://www.erudus.com/terms-and-conditions> for full terms and conditions.