

Changed May 21, 2024 15:03

Reviewed May 21, 2024 15:03

Erudus ID d29bf4bd202e457c9b3fdc91adbea21d

Version 2.0

Level 6 Soft & Bitesized Allergen Aware meals

Level 6 Allergen Aware Mixed Case (Multipack) (Multipack)

PRODUCT DESCRIPTION

Mixed case of individual meals. 4 of each meal in a case

Brand	Simply Food Solutions
Manufacturer Product Code	L6AAMIXC
Product Type	Food
Product Category	Ready Meals
Storage Type	Frozen
Erudus ID	d29bf4bd202e457c9b3fdc91adbea21d
Specification Type	Generic

Allergen Aware Vegetable Casserole (with crushed herby potato and carrot (V/Ve)

Manufacturer Component Code	EASY54C
Outer Case GTIN	5060221530200



INGREDIENTS

Ingredient Declaration

Water, potato (25%), carrot (21%), lentil (7%), cauliflower, parsnip, swede, onion, tomato, rapeseed oil, modified starch, salt, herb and spice, green chilli pepper

ALLERGENS

Product Contains:

Celery/Celeriac	No	Mustard	No
Cereals Containing Gluten	No	Nuts (Tree)	No
Barley	No	Almond nuts	No
Oats	No	Brazil nuts	No
Rye	No	Cashew nuts	No
Wheat (including Spelt and Khorasan)	No	Hazelnuts	No
Crustacea	No	Macadamia (Queensland) nuts	No
Eggs	No	Pecan nuts	No
Fish	No	Pistachio nuts	No
Lupin	No	Walnuts	No
Milk	No	Peanuts	No
Molluscs	No	Sesame Seeds	No
		Soybeans	No
		Sulphur Dioxide and Sulphites	No

Additional Allergen Information

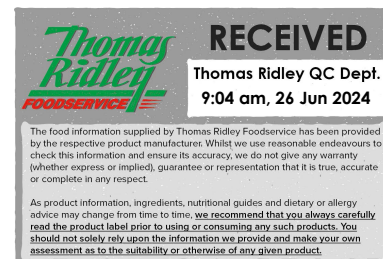
non present

SUPPLEMENTARY INGREDIENT INFORMATION

Palm Oil	No
Hydrogenated Vegetable Oil/Fat	No
GM Protein/DNA	No

ADDITIVES

Product Contains:

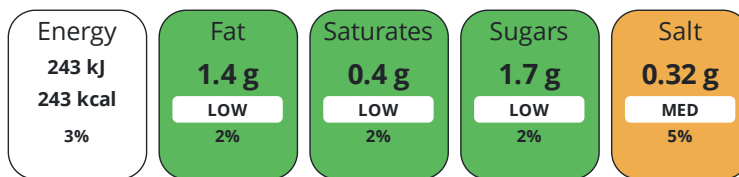


DIET
SUITABILITY

Vegan Diet	Suitable for	Vegetarian Diet	Suitable for
Halal Diet	No	Kosher Diet	No

NUTRITIONAL
INFORMATION

Each 100g/ml portion contains:



of your reference intake.

Typical values per 100g/ml : Energy 243kcal / 243kj

Nutrient	per 100g	RI per 100g	per 380g serving	RI per 380g serving
Energy (kJ)	243 kJ	3%	923.4 kJ	11%
Energy (kcal)	243 kcal	12%	923.4 kcal	46%
Fat	1.4 g	2%	5.3 g	8%
of which Saturates	0.4 g	2%	1.5 g	8%
Carbohydrate	6.5 g	3%	24.7 g	10%
of which Sugars	1.7 g	2%	6.5 g	7%
Fibre	1.1 g		4.2 g	
Protein	4.1 g	8%	15.6 g	31%
Salt	0.32 g	5%	1.2 g	20%
Sodium	130 mg		494 mg	

Serving Size 380 g

Source of Nutritional Information Manufacturers analysis

SUPPLEMENTARY
NUTRITIONAL
INFORMATION

HANDLING &
STORAGE
INFORMATION

Directions For Use

HEAT FROM FROZEN, Microwave, hat at 700w for 8-9 mins. Conventional oven, Place in pre-heated oven 150.C for 35-40 mins.
HEAT MEAL TO CORE TEMPERATURE TO MINIMUM OF +75.c. Once heated do not re-heat.

Storage Instructions

Storage: store at -18.c or colder in a clean environment. Shelf life 15 months from manufacture. Do not stack more than 6 cases high on a full pallet. Loose individual products more than 2 high and always store in box/container. Handle with care as C-pet meal containers become fragile at low temperatures and will shatter if mishandled or dropped.

Shelf Life from Time of Production 450 Days

ORIGIN

Product Country of Origin/Place of United Kingdom

Provenance

Standards Testing

PRODUCT
CHARACTERISTICS

CONFIGURATION	Case Configuration		Inner Pack Configuration				
	Variable Inner Components in Outer Case	No	Is Inner Pack Splittable?		No		
	Total Quantity of Inner Components in Outer Case	12 Units					
	Total Quantity of Inner Packs in Outer Case	12 Units					
PRODUCT WEIGHTS	Inner Component		Inner Pack				
	Variable Weight Consumer Item	No	Inner Pack Gross Weight		383 g		
	Inner Component Weight	380 g					
	Outer Case						
	Outer Case Gross Weight	5.04 kg					
	Outer Case Net Weight	4.56 kg					
PRODUCT DIMENSIONS	Inner Component		Inner Pack				
	Inner Component Depth	193 mm	Inner Pack Depth		193 mm		
	Inner Component Width	193 mm	Inner Pack Height		40 mm		
	Inner Component Height	40 mm					
	Outer Case						
	Outer Case Depth	385 mm					
	Outer Case Width	200 mm					
	Outer Case Height	235 mm					
PALLET INFORMATION	Quantity of Cases Per Pallet Layer	15 Cases	Pallet Height		2 MTR		
	Quantity of Layers Per Pallet	8 Layers	Pallet Gross Weight		528.68 kg		
	Quantity of Cases Per Pallet	120 Cases					
PACKAGING	Inner Component Packaging						
	Type	Materials	Weight	Recycled Plastic %	Recyclable	Returnable	Composite
	Poly Treated PET/PE	Plastic	10 g	- %			
	Outer Case Packaging						
	Type	Materials	Weight	Recycled Plastic %	Recyclable	Returnable	Composite
	Case	Paper/Cardboard	30 g	- %			
	OTHER INFORMATION						

Allergen Aware Chicken Casserole (with crushed herby potatoes and carrots)

Manufacturer Component Code	SOFT55C
Outer Case GTIN	5060221530200

INGREDIENTS

Ingredient Declaration

Water, carrot (25%), potato (21%), chicken (18%), onion, swede, modified starch, salt, gravy browning (water, colour: E150c, Salt), herb and spice, parsley, green chilli pepper

ALLERGENS

Product Contains:

Celery/Celeriac	No	Mustard	No
Cereals Containing Gluten	No	Nuts (Tree)	No
Barley	No	Almond nuts	No
Oats	No	Brazil nuts	No
Rye	No	Cashew nuts	No
Wheat (including Spelt and Khorasan)	No	Hazelnuts	No
Crustacea	No	Macadamia (Queensland) nuts	No
Eggs	No	Pecan nuts	No
Fish	No	Pistachio nuts	No
Lupin	No	Walnuts	No
Milk	No	Peanuts	No
Molluscs	No	Sesame Seeds	No
		Soybeans	No
		Sulphur Dioxide and Sulphites	No

Additional Allergen Information

Non present

SUPPLEMENTARY INGREDIENT INFORMATION

Palm Oil	No
Hydrogenated Vegetable Oil/Fat	No
GM Protein/DNA	No

ADDITIVES

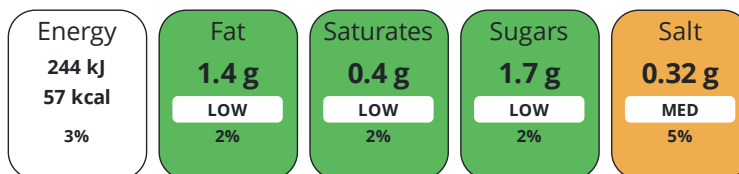
Product Contains:

DIET SUITABILITY

Vegan Diet	No	Vegetarian Diet	No
Halal Diet	No	Kosher Diet	No

NUTRITIONAL INFORMATION

Each 100g/ml portion contains:



of your reference intake.

Typical values per 100g/ml : Energy 57kcal / 244kJ

Nutrient	per 100ml	RI per 100ml	per 380ml serving	RI per 380ml serving
Energy (kJ)	243.5 kJ	3%	925.3 kJ	11%
Energy (kcal)	57 kcal	3%	216.6 kcal	11%
Fat	1.4 g	2%	5.3 g	8%
of which Saturates	0.4 g	2%	1.5 g	8%
Carbohydrate	6.5 g	3%	24.7 g	10%
of which Sugars	1.7 g	2%	6.5 g	7%
Fibre	1.1 g		4.2 g	
Protein	4.1 g	8%	15.6 g	31%
Salt	0.32 g	5%	1.2 g	20%
Sodium	130 mg		494 mg	

Serving Size 380 ml

Source of Nutritional Information Manufacturers analysis

SUPPLEMENTARY
NUTRITIONAL
INFORMATION

HANDLING &
STORAGE
INFORMATION

Directions For Use

HEAT FROM FROZEN, Microwave, hat at 700w for 8-9 mins. Conventional oven, Place in pre-heated oven 150.C for 35-40 mins.
HEAT MEAL TO CORE TEMPERATURE TO MINIMUM OF +75.c. Once heated do not re-heat.

Storage Instructions

Storage: store at -18.c or colder in a clean environment. Shelf life 15 months from manufacture. Do not stack more than 6 cases high on a full pallet. Loose individual products more than 2 high and always store in box/container. Handle with care as C-pet meal containers become fragile at low temperatures and will shatter if mishandled or dropped.

Shelf Life from Time of Production 450 Days

ORIGIN

Product Country of Origin/Place of United Kingdom

Provenance

PRODUCT
CHARACTERISTICS
CONFIGURATION

Standards Testing

Case Configuration

Inner Pack Configuration

Variable Inner Components in Outer Case No

Is Inner Pack Splittable? No

Total Quantity of Inner Components in 12 Units

Outer Case

Total Quantity of Inner Packs in Outer 12 Units

Case

Is the Outer Case Splittable? Yes

PRODUCT
WEIGHTS

Inner Component

Inner Pack

Variable Weight Consumer Item No

Inner Pack Gross Weight 383 g

Inner Component Weight 380 g

Outer Case

Outer Case Gross Weight 5.04 kg

Outer Case Net Weight 4.56 kg

PRODUCT DIMENSIONS

Inner Component	
Inner Component Depth	193 mm
Inner Component Width	193 mm
Inner Component Height	40 mm

Inner Pack	
Inner Pack Depth	193 mm
Inner Pack Height	40 mm

Outer Case	
Outer Case Depth	385 mm
Outer Case Width	200 mm
Outer Case Height	235 mm

PALLET INFORMATION

Quantity of Cases Per Pallet Layer	15 Cases
Quantity of Layers Per Pallet	8 Layers
Quantity of Cases Per Pallet	120 Cases

Pallet Height	2 MTR
Pallet Gross Weight	528.68 kg

PACKAGING

Inner Component Packaging

Type	Materials	Weight	Recycled Plastic %	Recyclable	Returnable	Composite
Poly Treated PET/PE	Plastic	10 g	- %			

Outer Case Packaging

Type	Materials	Weight	Recycled Plastic %	Recyclable	Returnable	Composite
Case	Paper/Cardboard	30 g	- %			

OTHER INFORMATION

Allergen Aware Savoury Beef (with crushed herby potatoes and swede)

Manufacturer Component Code EASY56C
Outer Case GTIN 5060221530200

INGREDIENTS

Ingredient Declaration

Water, potato (25%), beef (22%), swede (18%), onion, modified starch, tomato, salt, gravy browning (water, colour: E150c, salt), parsley, green chilli pepper.

ALLERGENS

Product Contains:

Celery/Celeriac	No	Mustard	No
Cereals Containing Gluten	No	Nuts (Tree)	No
Barley	No	Almond nuts	No
Oats	No	Brazil nuts	No
Rye	No	Cashew nuts	No
Wheat (including Spelt and Khorasan)	No	Hazelnuts	No
Crustacea	No	Macadamia (Queensland) nuts	No
Eggs	No	Pecan nuts	No
Fish	No	Pistachio nuts	No
Lupin	No	Walnuts	No
Milk	No	Peanuts	No
Molluscs	No	Sesame Seeds	No
		Soybeans	No
		Sulphur Dioxide and Sulphites	No

Additional Allergen Information

Non present

SUPPLEMENTARY INGREDIENT INFORMATION

Palm Oil	No
Hydrogenated Vegetable Oil/Fat	Yes
GM Protein/DNA	No

ADDITIVES

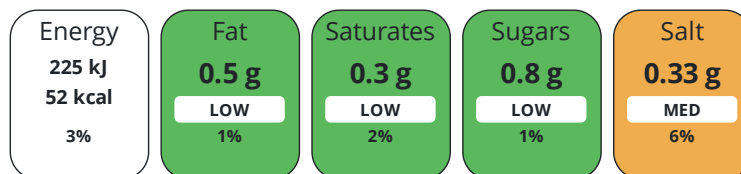
Product Contains:

DIET SUITABILITY

Vegan Diet	No	Vegetarian Diet	No
Halal Diet	No	Kosher Diet	No

NUTRITIONAL INFORMATION

Each 100g/ml portion contains:



of your reference intake.

Typical values per 100g/ml : Energy 52kcal / 225kJ

Nutrient	per 100g	RI per 100g	per 380g serving	RI per 380g serving
Energy (kJ)	225 kJ	3%	855 kJ	10%
Energy (kcal)	52 kcal	3%	197.6 kcal	10%
Fat	0.5 g	1%	1.9 g	3%
of which Saturates	0.3 g	2%	1.1 g	6%
Carbohydrate	6.1 g	2%	23.2 g	9%
of which Sugars	0.8 g	1%	3 g	3%
Fibre	0.8 g		3 g	
Protein	5.5 g	11%	20.9 g	42%
Salt	0.33 g	6%	1.3 g	22%
Sodium	130 mg		494 mg	

Serving Size 380 g

Source of Nutritional Information Manufacturers analysis

SUPPLEMENTARY
NUTRITIONAL
INFORMATION

HANDLING &
STORAGE
INFORMATION

Directions For Use

HEAT FROM FROZEN, Microwave, hat at 700w for 8-9 mins. Conventional oven, Place in pre-heated oven 150.C for 35-40 mins.
HEAT MEAL TO CORE TEMPERATURE TO MINIMUM OF +75.c. Once heated do not re-heat.

Storage Instructions

Storage: store at -18.c or colder in a clean environment. Shelf life 15 months from manufacture. Do not stack more than 6 cases high on a full pallet. Loose individual products more than 2 high and always store in box/container. Handle with care as C-pet meal containers become fragile at low temperatures and will shatter if mishandled or dropped.

Shelf Life from Time of Production 450 Days

ORIGIN

Product Country of Origin/Place of United Kingdom

Provenance

PRODUCT
CHARACTERISTICS
CONFIGURATION

Standards Testing

Case Configuration

Inner Pack Configuration

Variable Inner Components in Outer Case No

Is Inner Pack Splittable? No

Total Quantity of Inner Components in Outer Case 12 Units

Total Quantity of Inner Packs in Outer Case 12 Units

Is the Outer Case Splittable? Yes

PRODUCT
WEIGHTS

Inner Component

Inner Pack

Variable Weight Consumer Item No

Inner Pack Gross Weight 383 g

Inner Component Weight 380 g

Outer Case

Outer Case Gross Weight 5.04 kg

Outer Case Net Weight 4.56 kg

PRODUCT DIMENSIONS

Inner Component		Inner Pack	
Inner Component Depth	193 mm	Inner Pack Depth	193 mm
Inner Component Width	193 mm	Inner Pack Height	40 mm
Inner Component Height	40 mm		
Outer Case			
Outer Case Depth	385 mm		
Outer Case Width	200 mm		
Outer Case Height	235 mm		

PALLET INFORMATION

Quantity of Cases Per Pallet Layer	15 Cases	Pallet Height	2 MTR
Quantity of Layers Per Pallet	8 Layers	Pallet Gross Weight	528.68 kg
Quantity of Cases Per Pallet	120 Cases		

PACKAGING

Inner Component Packaging						
Type	Materials	Weight	Recycled Plastic %	Recyclable	Returnable	Composite
Poly Treated PET/PE	Steel	10 g	- %			
Outer Case Packaging						
Type	Materials	Weight	Recycled Plastic %	Recyclable	Returnable	Composite
Case	Paper/Cardboard	30 g	- %			

OTHER INFORMATION CONTACT INFORMATION

Address	Technical Contact
Simply Food Solutions	Fiona Gleghorn
Eldon Street	Head of Technical
South Shields	fiona.gleghorn@simplyfoodsolutions.co.uk
Newcastle	
Tyne and Wear	<u>P: (Phone)</u> 07745648777
NE33 5BZ	
United Kingdom	
<u>P: (Phone)</u> 01914560456	
Complaints Contact	
Fiona Gleghorn	
Head of Technical	
fiona.gleghorn@simplyfoodsolutions.co.uk	
<u>P: (Phone)</u> 077745648777	

The information on the [Erudus System](#) has been supplied by the manufacturers of the products and, whilst the owners of the Erudus System take steps to ensure the information is regularly updated, they give no warranty and no guarantee that the information is accurate. Product information and ingredients may change, please always read product labels carefully in addition to using the information provided by Erudus.

We do not accept liability for any inaccuracies or incorrect information contained on this site. Please visit <http://www.erudus.com/terms-and-conditions> for full terms and conditions.