

Changed May 21, 2024 15:10

Reviewed May 21, 2024 15:10

Erudus ID 06ca3a90fe7741018187812fa09788e5

Version 3.0

Level 4 Puree Allergy Aware Mixed Case

Level 4 Allergen Aware Mixed Case (Multipack) (Multipack)

PRODUCT DESCRIPTION

Mixed case of 12 texture modified meals 3 of each meal in each case

Brand	Simply Food Solutions
Manufacturer Product Code	GLPMIXC
Product Type	Food
Product Category	Ready Meals
Storage Type	Frozen
Erudus ID	06ca3a90fe7741018187812fa09788e5
Specification Type	Generic

Level 4 Allergen Aware Roast Lamb (with mint in onion gravy, with mash potatoes, root veg & peas)

Manufacturer Component Code	GLP04
Outer Case GTIN	5060221530170

INGREDIENTS

Ingredient Declaration

Water, lamb (16%), peas (13%) (rehydrated processed pea, water, sugar, salt, colours copper chlorophyllin, carotenes), root vegetables (12%) (carrots, swede, parsnip), potato (6%), mint sauce (mint, spirit vinegar, water, salt, acetic acid, colour copper chlorophyll), modified starch, onion, rapeseed oil, tomato, methyl cellulose, salt, gravy browning (water, colour E150c, salt), herb and spice, green chilli pepper.

ALLERGENS

Product Contains:

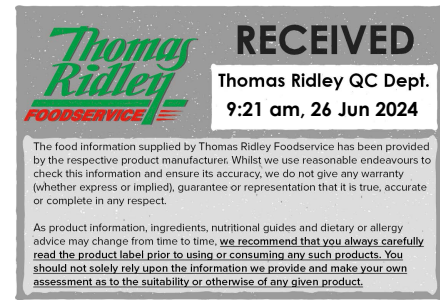
Celery/Celeryiac	No	Mustard	No
Cereals Containing Gluten	No	Nuts (Tree)	No
Barley	No	Almond nuts	No
Oats	No	Brazil nuts	No
Rye	No	Cashew nuts	No
Wheat (including Spelt and Khorasan)	No	Hazelnuts	No
Crustacea	No	Macadamia (Queensland) nuts	No
Eggs	No	Pecan nuts	No
Fish	No	Pistachio nuts	No
Lupin	No	Walnuts	No
Milk	No	Peanuts	No
Molluscs	No	Sesame Seeds	No
		Soybeans	No
		Sulphur Dioxide and Sulphites	No

Additional Allergen Information

Non present

SUPPLEMENTARY INGREDIENT INFORMATION

Palm Oil	No
Hydrogenated Vegetable Oil/Fat	No
GM Protein/DNA	No



ADDITIVES

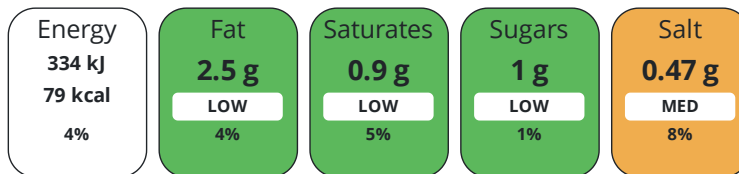
Product Contains:

Artificial Antioxidants	No	Artificial Flavourings	No
Artificial Colours	No	Artificial Preservatives	No
Artificial Flavour Enhancers	No	Artificial Sweeteners	No
Vegan Diet	No	Vegetarian Diet	No
Halal Diet	No	Kosher Diet	No

DIET SUITABILITY

NUTRITIONAL INFORMATION

Each 100g/ml portion contains:



of your reference intake.

Typical values per 100g/ml : Energy 79kcal / 334kj

Nutrient	per 100g	RI per 100g	per 380g of prepared product
Energy (kJ)	334 kJ	4%	1269.2 kJ
Energy (kcal)	79 kcal	4%	300.2 kcal
Fat	2.5 g	4%	9.5 g
of which Saturates	0.9 g	5%	3.4 g
Carbohydrate	9 g	3%	34.2 g
of which Sugars	1 g	1%	3.8 g
Fibre	1.4 g		5.3 g
Protein	4.4 g	9%	16.7 g
Salt	0.47 g	8%	1.8 g
Sodium	190 mg		722 mg

Source of Nutritional Information Manufacturers analysis

SUPPLEMENTARY NUTRITIONAL INFORMATION

HANDLING & STORAGE INFORMATION

Directions For Use

Prepare according to the heating guidelines/instructions on the product label. Remember these are guidelines only. HEAT FROM FROZEN microwave: Heat at 800w for 5-7 mins Conventional Oven: Place in a pre-heated oven 150.C for 40-45 minutes. HEAT MEAL TO CORE TEMPERATURE OF MINIMUM +75 .c (82.C Scotland).Once heated do not re heat.

Storage Instructions

Store at -18.C or below in a clean environment. Shelf life 15 months from manufacture do not stack more than 6 cases high on a full pallet. Loose individual products do not stack more than 2 high and always store inside a container/box. Handle with care as C-pet meal containers become fragile at low temperature and will shatter if dropped/mishandled.

Shelf Life from Time of Production 450 Days

ACCREDITATIONS/ CERTIFICATIONS/ ASSURANCE SCHEMES ORIGIN

BRCGS Certified

Product Country of Origin/Place of United Kingdom

Provenance

Standards Testing

PRODUCT CHARACTERISTICS

	Do you undertake trend analysis of microbiological results?	Yes	Is shelf life testing undertaken?	Yes			
CONFIGURATION	Case Configuration		Inner Pack Configuration				
	Total Quantity of Inner Components in Outer Case	12 Units					
	Is the Outer Case Splittable?	Yes					
PRODUCT WEIGHTS	Inner Component						
	Variable Weight Consumer Item	No					
	Inner Component Weight	380 g					
	Outer Case						
	Outer Case Gross Weight	5.04 kg					
	Outer Case Net Weight	4.56 kg					
PRODUCT DIMENSIONS	Inner Component		Inner Pack				
	Inner Component Depth	190 mm	Inner Pack Depth	190 mm			
	Inner Component Width	190 mm	Inner Pack Width	190 mm			
	Inner Component Height	40 mm	Inner Pack Height	40 mm			
	Outer Case						
	Outer Case Depth	385 mm					
	Outer Case Width	200 mm					
	Outer Case Height	235 mm					
PALLET INFORMATION	Quantity of Cases Per Pallet Layer	12 Cases	Pallet Height	2 MTR			
	Quantity of Layers Per Pallet	8 Layers	Pallet Gross Weight	528.68 kg			
	Quantity of Cases Per Pallet	120 Cases					
PACKAGING	Inner Component Packaging						
	Type	Materials	Weight	Recycled Plastic %	Recyclable	Returnable	Composite
	Poly Treated PET/PE	Plastic	10 g	0 %			
	Poly Treated PET/PE	Plastic	10 g	0 %			
	Outer Case Packaging						
	Type	Materials	Weight	Recycled Plastic %	Recyclable	Returnable	Composite
	Case	Paper/Cardboard	30 g	- %			
OTHER INFORMATION							

Level 4 Allergen Aware Chicken Casserole (with onion gravy, mash potato, root vegetables & peas)

Manufacturer Component Code	GLP05
Outer Case GTIN	5060221530170

INGREDIENTS

Ingredient Declaration

Ingredient Declaration

Water, chicken (16%), peas (13%) (rehydrated processed pea, water, sugar, salt, colours copper chlorophyllin, carotenes), root vegetables (12%)(parsnip, carrots, swede), Potato (6%), potato (potato, sunflower oil, dextrose), onion, tomato, leek, modified maize starch, rapeseed oil, methyl cellulose, salt, green chilli, gravy browning (water, colour E150c, salt).

ALLERGENS

Product Contains:

Celery/Celeriac	No	Mustard	No
Cereals Containing Gluten	No	Nuts (Tree)	No
Barley	No	Almond nuts	No
Oats	No	Brazil nuts	No
Rye	No	Cashew nuts	No
Wheat (including Spelt and Khorasan)	No	Hazelnuts	No
Crustacea	No	Macadamia (Queensland) nuts	No
Eggs	No	Pecan nuts	No
Fish	No	Pistachio nuts	No
Lupin	No	Walnuts	No
Milk	No	Peanuts	No
Molluscs	No	Sesame Seeds	No
		Soybeans	No
		Sulphur Dioxide and Sulphites	No

Additional Allergen Information

Non present

SUPPLEMENTARY INGREDIENT INFORMATION

Palm Oil	No
Hydrogenated Vegetable Oil/Fat	No
GM Protein/DNA	No

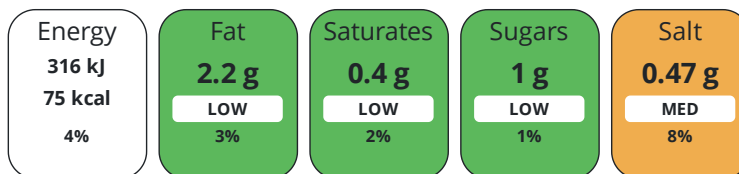
ADDITIVES

Product Contains:

Artificial Antioxidants	No	Artificial Flavourings	No
Artificial Colours	No	Artificial Preservatives	No
Artificial Flavour Enhancers	No	Artificial Sweeteners	No
Vegan Diet	No	Vegetarian Diet	No
Halal Diet	No	Kosher Diet	No

NUTRITIONAL INFORMATION

Each 100g/ml portion contains:



of your reference intake.

Typical values per 100g/ml : Energy 75kcal / 316kJ

Nutrient	per 100g	RI per 100g	per 380g of prepared product
Energy (kJ)	316 kJ	4%	1200.8 kJ
Energy (kcal)	75 kcal	4%	285 kcal
Fat	2.2 g	3%	8.4 g
of which Saturates	0.4 g	2%	1.5 g
Carbohydrate	8.9 g	3%	33.8 g
of which Sugars	1 g	1%	3.8 g
Protein	4.4 g	9%	16.7 g
Salt	0.47 g	8%	1.8 g

Source of Nutritional Information Manufacturers analysis

SUPPLEMENTARY
NUTRITIONAL
INFORMATION

HANDLING &
STORAGE
INFORMATION

Directions For Use

Prepare according to the heating guidelines/instructions on the product label. Remember these are guidelines only. HEAT FROM FROZEN microwave: Heat at 800w for 5-7 mins Conventional Oven: Place in a pre-heated oven 150.C for 40-45 minutes. HEAT MEAL TO CORE TEMPERATURE OF MINIMUM +75 .c (82.C Scotland).Once heated do not re heat.

Storage Instructions

Store at -18.C or below in a clean environment. Shelf life 15 months from manufacture do not stack more than 6 cases high on a full pallet. Loose individual products do not stack more than 2 high and always store inside a container/box. Handle with care as C-pet meal containers become fragile at low temperature and will shatter if dropped/mishandled.

Shelf Life from Time of Production 450 Days

ORIGIN

Product Country of Origin/Place of United Kingdom

Provenance

PRODUCT
CHARACTERISTICS

Standards Testing

Do you undertake trend analysis of microbiological results? Yes

Is shelf life testing undertaken? Yes

CONFIGURATION

Case Configuration

Inner Pack Configuration

Total Quantity of Inner Components in Outer Case 12 Units

Is the Outer Case Splittable? Yes

PRODUCT
WEIGHTS

Inner Component

Variable Weight Consumer Item No

Inner Component Weight 380 g

Outer Case

Outer Case Gross Weight 5.04 kg

Outer Case Net Weight 4.56 kg

PRODUCT DIMENSIONS

Inner Component		Inner Pack	
Inner Component Depth	190 mm	Inner Pack Depth	190 mm
Inner Component Width	190 mm	Inner Pack Width	190 mm
Inner Component Height	40 mm	Inner Pack Height	40 mm
Outer Case			
Outer Case Depth	385 mm		
Outer Case Width	200 mm		
Outer Case Height	235 mm		

PALLET INFORMATION

Quantity of Cases Per Pallet Layer	12 Cases	Pallet Height	2 MTR
Quantity of Layers Per Pallet	8 Layers	Pallet Gross Weight	528.68 kg
Quantity of Cases Per Pallet	120 Cases		

PACKAGING

Inner Component Packaging						
Type	Materials	Weight	Recycled Plastic %	Recyclable	Returnable	Composite
Poly Treated PET/PE	Plastic	10 g	0 %			
Outer Case Packaging						
Type	Materials	Weight	Recycled Plastic %	Recyclable	Returnable	Composite
Case	Paper/Cardboard	30 g	- %			

OTHER INFORMATION

Level 4 Allergen Aware Beef Casserole (with onion gravy, mash potato, root vegetables, peas)

Manufacturer Component Code	GLP06
Outer Case GTIN	5060221530170

INGREDIENTS

Ingredient Declaration

Water, beef (19%), peas (13%) (rehydrated processed pea, water, sugar, salt, colours copper chlorophyllin, carotenes), root vegetables (12%)(parsnip, carrots, swede), potato (6%), potato (potato, sunflower oil, dextrose), onion, leek, modified maize starch, rapeseed oil, tomato, methyl cellulose, salt, green chilli, gravy browning (water, colour E150c, salt).

ALLERGENS

Product Contains:

Celery/Celeriac	No	Mustard	No
Cereals Containing Gluten	No	Nuts (Tree)	No
Barley	No	Almond nuts	No
Oats	No	Brazil nuts	No
Rye	No	Cashew nuts	No
Wheat (including Spelt and Khorasan)	No	Hazelnuts	No
Crustacea	No	Macadamia (Queensland) nuts	No
Eggs	No	Pecan nuts	No
Fish	No	Pistachio nuts	No
Lupin	No	Walnuts	No
Milk	No	Peanuts	No
Molluscs	No	Sesame Seeds	No
		Soybeans	No
		Sulphur Dioxide and Sulphites	No

Additional Allergen Information

Non present

SUPPLEMENTARY INGREDIENT INFORMATION

Palm Oil	No
Hydrogenated Vegetable Oil/Fat	No
GM Protein/DNA	No

ADDITIVES

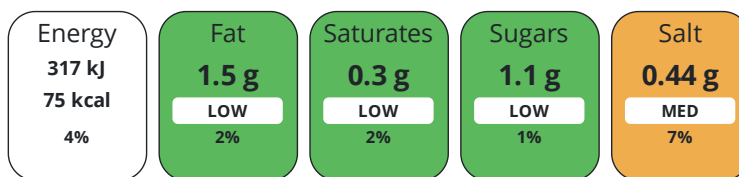
Product Contains:

Artificial Antioxidants	No	Artificial Flavourings	No
Artificial Colours	No	Artificial Preservatives	No
Artificial Flavour Enhancers	No	Artificial Sweeteners	No
Vegan Diet	No	Vegetarian Diet	No
Halal Diet	No	Kosher Diet	No

DIET SUITABILITY

NUTRITIONAL INFORMATION

Each 100g/ml portion contains:



of your reference intake.

Typical values per 100g/ml : Energy 75kcal / 317kJ

Nutrient	per 100g	RI per 100g	per 380g of prepared product
Energy (kJ)	317 kJ	4%	1204.6 kJ
Energy (kcal)	75 kcal	4%	285 kcal
Fat	1.5 g	2%	5.7 g
of which Saturates	0.3 g	2%	1.1 g
Carbohydrate	9.2 g	4%	35 g
of which Sugars	1.1 g	1%	4.2 g
Fibre	1.6 g		6.1 g
Protein	5.5 g	11%	20.9 g
Salt	0.44 g	7%	1.7 g
Sodium	180 mg		1.7 mg

Source of Nutritional Information Manufacturers analysis

SUPPLEMENTARY
NUTRITIONAL
INFORMATION

HANDLING &
STORAGE
INFORMATION

Directions For Use

Prepare according to the heating guidelines/instructions on the product label. Remember these are guidelines only. HEAT FROM FROZEN microwave: Heat at 800w for 5-7 mins Conventional Oven: Place in a pre-heated oven 150.C for 40-45 minutes. HEAT MEAL TO CORE TEMPERATURE OF MINIMUM +75 .c (82.C Scotland).Once heated do not re heat.

Storage Instructions

Store at -18.C or below in a clean environment. Shelf life 15 months from manufacture do not stack more than 6 cases high on a full pallet. Loose individual products do not stack more than 2 high and always store inside a container/box. Handle with care as C-pet meal containers become fragile at low temperature and will shatter if dropped/mishandled.

Shelf Life from Time of Production 450 Days

ORIGIN

Product Country of Origin/Place of Provenance United Kingdom

PRODUCT
CHARACTERISTICS

Standards Testing

Do you undertake trend analysis of microbiological results? Yes

Is shelf life testing undertaken? Yes

CONFIGURATION

Case Configuration

Inner Pack Configuration

Total Quantity of Inner Components in Outer Case 12 Units

Is the Outer Case Splittable? Yes

PRODUCT
WEIGHTS

Inner Component

Variable Weight Consumer Item No

Inner Component Weight 380 g

Outer Case

Outer Case Gross Weight 5.04 kg

Outer Case Net Weight 4.56 kg

PRODUCT DIMENSIONS

Inner Component		Inner Pack	
Inner Component Depth	190 mm	Inner Pack Depth	190 mm
Inner Component Width	190 mm	Inner Pack Width	190 mm
Inner Component Height	40 mm	Inner Pack Height	40 mm
Outer Case			
Outer Case Depth	385 mm		
Outer Case Width	200 mm		
Outer Case Height	235 mm		

PALLET INFORMATION

Quantity of Cases Per Pallet Layer	12 Cases	Pallet Height	2 MTR
Quantity of Layers Per Pallet	8 Layers	Pallet Gross Weight	528.68 kg
Quantity of Cases Per Pallet	120 Cases		

PACKAGING

Inner Component Packaging						
Type	Materials	Weight	Recycled Plastic %	Recyclable	Returnable	Composite
Poly Treated PET/PE	Plastic	10 g	0 %			
Outer Case Packaging						
Type	Materials	Weight	Recycled Plastic %	Recyclable	Returnable	Composite
Case	Paper/Cardboard	30 g	- %			

OTHER INFORMATION

Level 4 Allergen Aware Chickpea Stew (with tomato sauce, mash potato, root vegetables & peas)

Manufacturer Component Code: GLP07
 Outer Case GTIN: 5060221530170



INGREDIENTS

Ingredient Declaration

Water, peas (13%)(rehydrated processed pea, water, sugar, salt, colours copper chlorophyllin, carotenes), root vegetables (12%)(parsnip, carrots, swede), chick peas (9%), potato (6%), potato (potato, sunflower oil, dextrose), tomato, onion, spinach, modified maize starch, rapeseed oil, methyl cellulose, salt, green chilli pepper.

ALLERGENS

Product Contains:

Celery/Celeriac	No	Mustard	No
Cereals Containing Gluten	No	Nuts (Tree)	No
Barley	No	Almond nuts	No
Oats	No	Brazil nuts	No
Rye	No	Cashew nuts	No
Wheat (including Spelt and Khorasan)	No	Hazelnuts	No
Crustacea	No	Macadamia (Queensland) nuts	No
Eggs	No	Pecan nuts	No
Fish	No	Pistachio nuts	No
Lupin	No	Walnuts	No
Milk	No	Peanuts	No
Molluscs	No	Sesame Seeds	No
		Soybeans	No
		Sulphur Dioxide and Sulphites	No

Additional Allergen Information

Non present

SUPPLEMENTARY INGREDIENT INFORMATION

Palm Oil	No
Hydrogenated Vegetable Oil/Fat	No
GM Protein/DNA	No

ADDITIVES

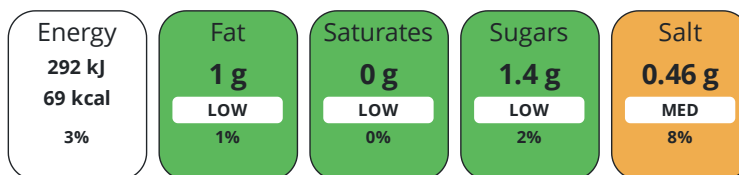
Product Contains:

Artificial Antioxidants	No	Artificial Flavourings	No
Artificial Colours	No	Artificial Preservatives	No
Artificial Flavour Enhancers	No	Artificial Sweeteners	No
Vegan Diet	Suitable for	Vegetarian Diet	Suitable for
Halal Diet	No	Kosher Diet	No

DIET SUITABILITY

NUTRITIONAL INFORMATION

Each 100g/ml portion contains:



of your reference intake.

Typical values per 100g/ml : Energy 69kcal / 292kJ

Nutrient	per 100g	RI per 100g	per 380g of prepared product
Energy (kJ)	292 kJ	3%	1109.6 kJ
Energy (kcal)	69 kcal	3%	262.2 kcal
Fat	1 g	1%	3.8 g
of which Saturates	0 g	0%	0 g
Carbohydrate	12 g	5%	45.6 g
of which Sugars	1.4 g	2%	5.3 g
Fibre	2.5 g		9.5 g
Protein	2.3 g	5%	8.7 g
Salt	0.46 g	8%	1.7 g
Sodium	180 mg		684 mg

Source of Nutritional Information Manufacturers analysis

SUPPLEMENTARY
NUTRITIONAL
INFORMATION

HANDLING &
STORAGE
INFORMATION

Directions For Use

Prepare according to the heating guidelines/instructions on the product label. Remember these are guidelines only. HEAT FROM FROZEN microwave: Heat at 800w for 5-7 mins Conventional Oven: Place in a pre-heated oven 150.C for 40-45 minutes. HEAT MEAL TO CORE TEMPERATURE OF MINIMUM +75 .c (82.C Scotland).Once heated do not re heat.

Storage Instructions

Store at -18.C or below in a clean environment. Shelf life 15 months from manufacture do not stack more than 6 cases high on a full pallet. Loose individual products do not stack more than 2 high and always store inside a container/box. Handle with care as C-pet meal containers become fragile at low temperature and will shatter if dropped/mishandled.

Shelf Life from Time of Production 450 Days

ORIGIN

Product Country of Origin/Place of United Kingdom

Provenance

PRODUCT
CHARACTERISTICS

Standards Testing

Do you undertake trend analysis of microbiological results? Yes

Is shelf life testing undertaken? Yes

CONFIGURATION

Case Configuration

Inner Pack Configuration

Total Quantity of Inner Components in Outer Case 12 Units

Is the Outer Case Splittable? Yes

PRODUCT
WEIGHTS

Inner Component

Variable Weight Consumer Item No

Inner Component Weight 380 g

Outer Case

Outer Case Gross Weight 5.04 kg

Outer Case Net Weight 4.56 kg

PRODUCT DIMENSIONS

Inner Component		Inner Pack	
Inner Component Depth	190 mm	Inner Pack Depth	190 mm
Inner Component Width	190 mm	Inner Pack Width	190 mm
Inner Component Height	40 mm	Inner Pack Height	40 mm
Outer Case			
Outer Case Depth	385 mm		
Outer Case Width	200 mm		
Outer Case Height	235 mm		

PALLET INFORMATION

Quantity of Cases Per Pallet Layer	12 Cases	Pallet Height	2 MTR
Quantity of Layers Per Pallet	8 Layers	Pallet Gross Weight	528.68 kg
Quantity of Cases Per Pallet	120 Cases		

PACKAGING

Inner Component Packaging						
Type	Materials	Weight	Recycled Plastic %	Recyclable	Returnable	Composite
Poly Treated PET/PE	Plastic	10 g	0 %			
Outer Case Packaging						
Type	Materials	Weight	Recycled Plastic %	Recyclable	Returnable	Composite
Case	Paper/Cardboard	30 g	- %			

OTHER INFORMATION CONTACT INFORMATION

Address	Technical Contact
Simply Food Solutions	Fiona Gleghorn
Eldon Street	Head of Technical
South Shields	fiona.gleghorn@simplyfoodsolutions.co.uk
Newcastle	
Tyne and Wear	<u>P: (Phone)</u> 07745648777
NE33 5BZ	
United Kingdom	
 <u>P: (Phone)</u> 01914560456	
 Complaints Contact	
Fiona Gleghorn	
Head of Technical	
fiona.gleghorn@simplyfoodsolutions.co.uk	
 <u>P: (Phone)</u> 077745648777	

The information on the [Erudus System](#) has been supplied by the manufacturers of the products and, whilst the owners of the Erudus System take steps to ensure the information is regularly updated, they give no warranty and no guarantee that the information is accurate. Product information and ingredients may change, please always read product labels carefully in addition to using the information provided by Erudus.

We do not accept liability for any inaccuracies or incorrect information contained on this site. Please visit <http://www.erudus.com/terms-and-conditions> for full terms and conditions.