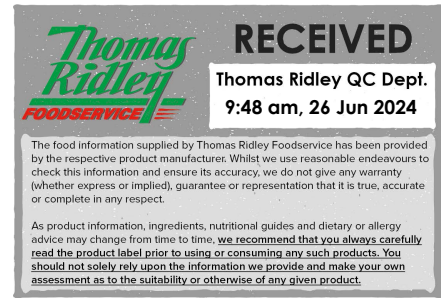


Changed May 21, 2024 14:55

Reviewed May 21, 2024 14:55

Erudus ID 4647957d88b94dad882d1a645f1c0b9e

Version 3.0



Level 4 Pureed Meals Mixed Case

Level 4 Mixed Case (Multipack) (Multipack)

PRODUCT DESCRIPTION

Mixed case of 12 individual meals. 2 of each per case

Brand	Simply Food Solutions
Manufacturer Product Code	L4MIXC
Product Type	Food
Product Category	Ready Meals
Storage Type	Frozen
Erudus ID	4647957d88b94dad882d1a645f1c0b9e
Specification Type	Generic

Chicken & Stuffing (rich in gravy with mash potatoes, carrots and Broccoli)

Manufacturer Component Code	SP001
Outer Case GTIN	5060221530132



INGREDIENTS

Ingredient Declaration

Potato (26%) (water, potato flakes, palm oil, MILK protein, EGG, salt, natural butter flavour, glucose syrup, turmeric extract), chicken (16%), carrots (13%), broccoli (13%), water, stuffing (2%) (water, bread rusk [WHEAT flour, water, yeast, salt], onion, salt [anti caking agent: E535], rapeseed oil, sage, parsley, sage extract [salt, herb extracts, anti caking agent: E551]), cream (MILK), onion, gravy (modified maize starch, salt, onion, palm oil, colour: E150c, whey [MILK], hydrolysed vegetable protein [SOYA, maize], black pepper), rapeseed oil, modified maize starch, butter oil (MILK) (vegetable oil [rape, palm], salt, emulsifier: E322, butter oil, colour: E160a), methyl cellulose, salt, black pepper, gravy browning (water, colour: E150c, salt).

ALLERGENS

Product Contains:

Celery/Celериac	May Contain	Mustard	May Contain
Cereals Containing Gluten	Yes	Nuts (Tree)	May Contain
Barley	No	Almond nuts	May Contain
Oats	No	Brazil nuts	May Contain
Rye	No	Cashew nuts	May Contain
Wheat (including Spelt and Khorasan)	Yes	Hazelnuts	May Contain
Crustacea	No	Macadamia (Queensland) nuts	May Contain
Eggs	Yes	Pecan nuts	May Contain
Fish	No	Pistachio nuts	May Contain
Lupin	No	Walnuts	May Contain
Milk	Yes	Peanuts	May Contain
Molluscs	No	Sesame Seeds	May Contain
		Soybeans	Yes
		Sulphur Dioxide and Sulphites	No

Risk Source:

Celery/Celeriac (Risk Source)	Raw Material	Mustard (Risk Source)	Raw Material
Tree Nuts (Risk Source)	Raw Material	Almond nuts (Risk Source)	Raw Material
Brazil nuts (Risk Source)	Raw Material	Cashew nuts (Risk Source)	Raw Material
Hazelnuts (Risk Source)	Raw Material	Macadamia nuts (Risk Source)	Raw Material
Pecan nuts (Risk Source)	Raw Material	Pistachio nuts (Risk Source)	Raw Material
Walnuts (Risk Source)	Raw Material	Peanuts (Risk Source)	Raw Material
Sesame Seeds (Risk Source)	Raw Material		

Additional Allergen Information

For allergens, including cereals containing gluten, see ingredient's in CAPITALS. May also contain nuts, sesame, celery and mustard

SUPPLEMENTARY
INGREDIENT
INFORMATION

Palm Oil	Yes
GM Protein/DNA	No

ADDITIVES

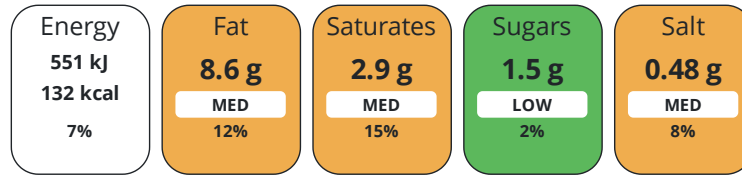
Product Contains:

DIET
SUITABILITY

Vegan Diet	No	Vegetarian Diet	No
Halal Diet	No	Kosher Diet	No

NUTRITIONAL
INFORMATION

Each 100g/ml portion contains:



of your reference intake.

Typical values per 100g/ml : Energy 132kcal / 551kJ

Nutrient	per 100g	RI per 100g	per 380g of prepared product
Energy (kJ)	551 kJ	7%	2093.8 kJ
Energy (kcal)	132 kcal	7%	501.6 kcal
Fat	8.6 g	12%	30.4 g
of which Saturates	2.9 g	15%	11 g
Carbohydrate	8.4 g	3%	31.9 g
of which Sugars	1.5 g	2%	5.7 g
Fibre	1.5 g		5.7 g
Protein	5.9 g	12%	22.4 g
Salt	0.48 g	8%	1.8 g
Sodium	180 mg		684 mg

Source of Nutritional Information Manufacturers analysis

SUPPLEMENTARY
NUTRITIONAL
INFORMATION

HANDLING & STORAGE INFORMATION

Directions For Use

HEAT FROM FROZEN Microwave at 800w for 5-7 minutes Conventional oven Place in pre-heated oven 150.c for 40-45 minutes.
HEAT TO CORE TEMPERTURE OF MINIMUM +75.c once heated do not reheat

Storage Instructions

Store at -18.C or colder in a clean environment. Shelf life 15 months from manufacture. Do not stack more than 6 cases high on a full pallet, Loose individual products do not stack more than 2 high and always store in container or box. Handle with care as C-Pet meal container becomes fragile at low temperatures and will shatter if dropped or mishandled.

Shelf Life from Time of Production 450 Days

ACCREDITATIONS/ CERTIFICATIONS/ ASSURANCE SCHEMES ORIGIN

BRCGS Certified

Product Country of Origin/Place of Provenance United Kingdom

PRODUCT CHARACTERISTICS

Standards Testing

Do you undertake trend analysis of microbiological results?	Yes	Is shelf life testing undertaken?	Yes
--------------------------------------------------------------------	-----	------------------------------------------	-----

CONFIGURATION

Case Configuration

Inner Pack Configuration

Variable Inner Components in Outer Case Yes

Total Quantity of Inner Components in Outer Case 12 Units

Total Quantity of Inner Packs in Outer Case 12 Units

Is the Outer Case Splittable? Yes

PRODUCT WEIGHTS

Inner Component

Inner Pack

Variable Weight Consumer Item No

Inner Pack Gross Weight 380 g

Inner Component Weight 380 g

Outer Case

Outer Case Gross Weight 5.04 kg

Outer Case Net Weight 4.56 kg

PRODUCT DIMENSIONS

Inner Component

Inner Pack

Inner Component Depth 190 mm

Inner Pack Depth 190 mm

Inner Component Width 190 mm

Inner Pack Width 190 mm

Inner Component Height 40 mm

Inner Pack Height 40 mm

Outer Case

Outer Case Depth 385 mm

Outer Case Width 200 mm

Outer Case Height 235 mm

PALLET INFORMATION

Quantity of Cases Per Pallet Layer 15 Cases

Pallet Height 2 MTR

Quantity of Layers Per Pallet 8 Layers

Pallet Gross Weight 528.68 kg

Quantity of Cases Per Pallet 120 Cases

PACKAGING

Inner Component Packaging

Type	Materials	Weight	Recycled Plastic %	Recyclable	Returnable	Composite
Poly Treated PET/PE	Plastic	10 g	- %			

OTHER INFORMATION

Beef Stew (and dumpling in rich gravy with mash potatoes, carrots and peas)

Manufacturer Component Code SP009
 Outer Case GTIN 5060221530132



INGREDIENTS

Ingredient Declaration

Potato Mash (26%) (Water, Cream (MILK), Potato [Potato, Palm oil, Glucose syrup, MILK protein, Palm Oil, Whey (MILK), Acid Casein (MILK), Sodium Carbonate, Disodium Phosphate, EGG, Salt, Flavour: Whey (MILK), Butter (MILK), Maltodextrin, Salt, Thickener: Guar Gum, Annatto, Turmeric], Butter Oil (Vegetable Oil [Rape, Palm], Salt, Emulsifier: E322, Flavouring: Butter Oil (MILK), Colour: E160a), MILK, Modified Starch), Water, Beef (19%), Carrot (14%), Cauliflower (13%), Butter Oil (MILK) (Vegetable Oil [Rape, Palm], Salt, Emulsifier: E322, Flavouring: Butter Oil, Colour: E160a), Yorkshire Pudding (Fortified WHEAT Flour (WHEAT Flour, Calcium Carbonate, Iron, Niacin Thiamin), Water, EGG White, Rapeseed Oil, EGG, Skimmed MILK Powder, Salt), Modified Starch, Rapeseed Oil, Onion, Gravy (Modified Maize Starch, Salt, Onion, Palm Oil, Colour: E150c, Whey [MILK], Hydrolysed Vegetable Protein [SOYA, Maize], Black Pepper), Methyl Cellulose, (MUSTARD), Gravy Browning (Water, Colour: E150c, Salt), Salt, Herb and Spice, Cheese Powder (MILK) (Cheese, Whey Powder, Salt).

ALLERGENS

Product Contains:

Celery/Celeriac	May Contain	Mustard	Yes
Cereals Containing Gluten	Yes	Nuts (Tree)	May Contain
Barley	No	Almond nuts	May Contain
Oats	No	Brazil nuts	May Contain
Rye	No	Cashew nuts	May Contain
Wheat (including Spelt and Khorasan)	Yes	Hazelnuts	May Contain
Crustacea	No	Macadamia (Queensland) nuts	May Contain
Eggs	Yes	Pecan nuts	May Contain
Fish	No	Pistachio nuts	May Contain
Lupin	No	Walnuts	May Contain
Milk	Yes	Peanuts	May Contain
Molluscs	No	Sesame Seeds	May Contain
		Soybeans	Yes
		Sulphur Dioxide and Sulphites	No

Risk Source:

Almond nuts (Risk Source)	Raw Material	Tree Nuts (Risk Source)	Raw Material
Cashew nuts (Risk Source)	Raw Material	Brazil nuts (Risk Source)	Raw Material
Macadamia nuts (Risk Source)	Raw Material	Hazelnuts (Risk Source)	Raw Material
Pistachio nuts (Risk Source)	Raw Material	Pecan nuts (Risk Source)	Raw Material
Peanuts (Risk Source)	Raw Material	Walnuts (Risk Source)	Raw Material
		Sesame Seeds (Risk Source)	Raw Material

Allergen Statement On Pack

For allergens including cereals containing gluten, see ingredients in CAPITAL, may also contain nuts, sesame, celery and mustard

SUPPLEMENTARY INGREDIENT INFORMATION

Palm Oil	Yes
Hydrogenated Vegetable Oil/Fat	No
GM Protein/DNA	No

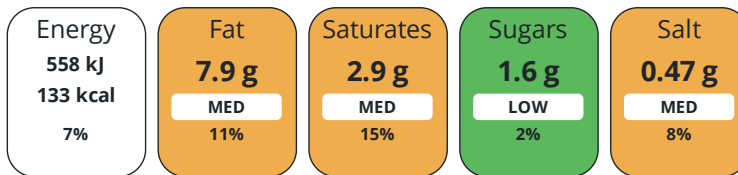
ADDITIVES

Product Contains:

DIET SUITABILITY

Vegan Diet	No	Vegetarian Diet	No
Halal Diet	No	Kosher Diet	No

Each 100g/ml portion contains:



of your reference intake.

Typical values per 100g/ml : Energy 133kcal / 558kj

Nutrient	per 100g	RI per 100g	per 380g of prepared product
Energy (kJ)	558 kJ	7%	2120.4 kJ
Energy (kcal)	133 kcal	7%	505.4 kcal
Fat	7.9 g	11%	30 g
of which Saturates	2.9 g	15%	11 g
Carbohydrate	7.5 g	3%	28.5 g
of which Sugars	1.6 g	2%	6.1 g
Fibre	1.8 g		6.8 g
Protein	5.4 g	11%	20.5 g
Salt	0.47 g	8%	1.8 g
Sodium	189 mg		718.2 mg

Source of Nutritional Information Manufacturers analysis

SUPPLEMENTARY
NUTRITIONAL
INFORMATION

HANDLING &
STORAGE
INFORMATION

Directions For Use

HEAT FROM FROZEN Microwave at 800w for 5-7 minutes Conventional oven Place in pre-heated oven 150.c for 40-45 minutes.
HEAT TO CORE TEMPERTURE OF MINIMUM +75.c once heated do not reheat

Storage Instructions

Store at -18.C or colder in a clean environment. Shelf life 15 months from manufacture. Do not stack more than 6 cases high on a full pallet, Loose individual products do not stack more than 2 high and always store in container or box. Handle with care as C-Pet meal container becomes fragile at low temperatures and will shatter if dropped or mishandled.

Shelf Life from Time of Production 450 Days

ORIGIN

Product Country of Origin/Place of United Kingdom

Provenance

PRODUCT
CHARACTERISTICS

Standards Testing

Do you undertake trend analysis of Yes
microbiological results?

Is shelf life testing undertaken? Yes

CONFIGURATION

Case Configuration

Inner Pack Configuration

Variable Inner Components in Outer Case Yes

Total Quantity of Inner Components in 12 Units
Outer Case

Total Quantity of Inner Packs in Outer 12 Units
Case

Is the Outer Case Splittable? Yes

PRODUCT WEIGHTS	Inner Component		Inner Pack				
	Variable Weight Consumer Item	No	Inner Pack Gross Weight		380 g		
	Inner Component Weight	380 g					
	Outer Case						
	Outer Case Gross Weight	5.04 kg					
PRODUCT DIMENSIONS	Inner Component		Inner Pack				
	Inner Component Depth	190 mm	Inner Pack Depth		190 mm		
	Inner Component Width	190 mm	Inner Pack Width		190 mm		
	Inner Component Height	40 mm	Inner Pack Height		40 mm		
	Outer Case						
	Outer Case Depth	385 mm					
	Outer Case Width	200 mm					
PALLET INFORMATION	Outer Case Height	235 mm					
	Quantity of Cases Per Pallet Layer	15 Cases	Pallet Height		2 MTR		
	Quantity of Layers Per Pallet	8 Layers	Pallet Gross Weight		528.68 kg		
	Quantity of Cases Per Pallet	120 Cases					
PACKAGING	Inner Component Packaging						
	Type	Materials	Weight	Recycled Plastic %	Recyclable	Returnable	Composite
	Poly Treated PET/PE	Plastic	10 g	- %			
OTHER INFORMATION							

Lamb with Mint (with mint rich in gravy with mash potatoes, peas and swede /parsnips)

Manufacturer Component Code SP007
 Outer Case GTIN 5060221530132



INGREDIENTS

Ingredient Declaration

Potato Mash (26%) (Water, Cream (MILK), Potato [Potato, Palm Oil, Glucose Syrup, MILK Protein, Palm Oil, Whey (MILK), Acid Casein (MILK), Sodium Carbonate, Disodium Phosphate, EGG, Salt, Flavour: Whey (MILK), Butter (MILK), Maltodextrin, Salt, Thickener: Guar Gum, Annatto, Turmeric], Butter Oil [Vegetable Oil [Rape, Palm], Salt, Emulsifier: E322, Flavouring: Butter Oil (MILK), Colour: E160a]), Water, Lamb (18%), Peas (13%) (Rehydrated Processed Pea, Water, Sugar, Salt, Colours: Copper Chlorophyllin, Carotenes) Swede (6%), Parsnip (6%), Mint Sauce (Mint, Spirit Vinegar, Water, Salt, Acetic Acid, Colour: Copper Chlorophyllin), Modified Starch, Onion, Rapeseed Oil, Gravy (Modified Maize Starch, Salt, Onion, Palm Oil, Colour: E150c, Whey (MILK), Hydrolysed Vegetable Protein [SOYA Protein, Maize Protein], Black Pepper), Butter Oil (Vegetable Oil [rape, Palm], Salt, Emulsifier: E322, Flavouring: Butter Oil (MILK), Colour: E160a), Methyl Cellulose, Salt, Gravy Browning (Water, Colour: E150c, Salt), Herb And Spice.

ALLERGENS

Product Contains:

Celery/Celeriac	May Contain	Mustard	May Contain
Cereals Containing Gluten	No	Nuts (Tree)	May Contain
Barley	No	Almond nuts	May Contain
Oats	No	Brazil nuts	May Contain
Rye	No	Cashew nuts	May Contain
Wheat (including Spelt and Khorasan)	No	Hazelnuts	May Contain
Crustacea	No	Macadamia (Queensland) nuts	May Contain
Eggs	Yes	Pecan nuts	May Contain
Fish	No	Pistachio nuts	May Contain
Lupin	No	Walnuts	May Contain
Milk	Yes	Peanuts	May Contain
Molluscs	No	Sesame Seeds	May Contain
		Soybeans	Yes
		Sulphur Dioxide and Sulphites	No

Risk Source:

Celery/Celeriac (Risk Source)	Raw Material	Mustard (Risk Source)	Raw Material
Tree Nuts (Risk Source)	Raw Material	Almond nuts (Risk Source)	Raw Material
Brazil nuts (Risk Source)	Raw Material	Cashew nuts (Risk Source)	Raw Material
Hazelnuts (Risk Source)	Raw Material	Macadamia nuts (Risk Source)	Raw Material
Pecan nuts (Risk Source)	Raw Material	Pistachio nuts (Risk Source)	Raw Material
Walnuts (Risk Source)	Raw Material	Peanuts (Risk Source)	Raw Material
Sesame Seeds (Risk Source)	Raw Material		

Allergen Statement On Pack

For allergens, see ingredients in CAPTIALS may also contain nuts, sesame, celery and mustard

SUPPLEMENTARY INGREDIENT INFORMATION

Palm Oil	Yes
Hydrogenated Vegetable Oil/Fat	No
GM Protein/DNA	No

ADDITIVES

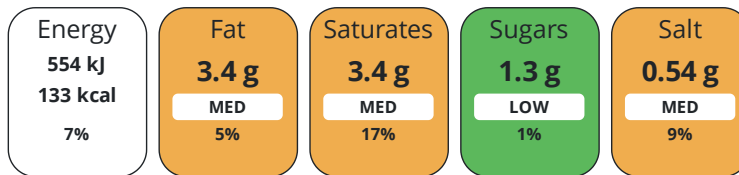
Product Contains:

DIET SUITABILITY

Vegan Diet	No	Vegetarian Diet	No
Halal Diet	No	Kosher Diet	No

NUTRITIONAL
INFORMATION

Each 100g/ml portion contains:



of your reference intake.

Typical values per 100g/ml : Energy 133kcal / 554kJ

Nutrient	per 100g	RI per 100g	per 380g of prepared product
Energy (kJ)	554 kJ	7%	2105.2 kJ
Energy (kcal)	133 kcal	7%	505 kcal
Fat	3.4 g	5%	31.2 g
of which Saturates	3.4 g	17%	12.9 g
Carbohydrate	8.7 g	3%	33.1 g
of which Sugars	1.3 g	1%	4.9 g
Fibre	1.6 g		6.1 g
Protein	5.2 g	10%	11.8 g
Salt	0.54 g	9%	2.1 g
Sodium	220 mg		836 mg

Source of Nutritional Information Manufacturers analysis

SUPPLEMENTARY
NUTRITIONAL
INFORMATION

HANDLING &
STORAGE
INFORMATION

Directions For Use

HEAT FROM FROZEN Microwave at 800w for 5-7 minutes Conventional oven Place in pre-heated oven 150.c for 40-45 minutes.
HEAT TO CORE TEMPERTURE OF MINIMUM +75.c once heated do not reheat

Storage Instructions

Store at -18.C or colder in a clean environment. Shelf life 15 months from manufacture. Do not stack more than 6 cases high on a full pallet, Loose individual products do not stack more than 2 high and always store in container or box. Handle with care as C-Pet meal container becomes fragile at low temperatures and will shatter if dropped or mishandled.

Storage Instructions After Opening

Store at -18.C or colder in a clean environment. Shelf life 15 months from manufacture. Do not stack more than 6 cases high on a full pallet, Loose individual products do not stack more than 2 high and always store in container or box. Handle with care as C-Pet meal container becomes fragile at low temperatures and will shatter if dropped or mishandled.

Shelf Life from Time of Production 450 Days

ORIGIN

Product Country of Origin/Place of United Kingdom

Provenance

PRODUCT
CHARACTERISTICS

Standards Testing

Do you undertake trend analysis of microbiological results? Yes

Is shelf life testing undertaken? Yes

CONFIGURATION

Case Configuration

Inner Pack Configuration

Variable Inner Components in Outer Case	Yes
Total Quantity of Inner Components in Outer Case	12 Units
Total Quantity of Inner Packs in Outer Case	12 Units
Is the Outer Case Splittable?	Yes

PRODUCT WEIGHTS

Inner Component	
Variable Weight Consumer Item	No
Inner Component Weight	380 g
Outer Case	
Outer Case Gross Weight	5.04 kg
Outer Case Net Weight	4.56 kg

Inner Pack	
Inner Pack Gross Weight	380 g

PRODUCT DIMENSIONS

Inner Component	
Inner Component Depth	190 mm
Inner Component Width	190 mm
Inner Component Height	40 mm
Outer Case	
Outer Case Depth	385 mm
Outer Case Width	200 mm
Outer Case Height	235 mm

Inner Pack	
Inner Pack Depth	190 mm
Inner Pack Width	190 mm
Inner Pack Height	40 mm

PALLET INFORMATION

Quantity of Cases Per Pallet Layer	15 Cases
Quantity of Layers Per Pallet	8 Layers
Quantity of Cases Per Pallet	120 Cases

Pallet Height	2 MTR
Pallet Gross Weight	528.68 kg

PACKAGING

Inner Component Packaging

Type	Materials	Weight	Recycled Plastic %	Recyclable	Returnable	Composite
Poly Treated PET/PE	Plastic	10 g	- %			

OTHER INFORMATION

Salmon with dill (and cream sauce with mash, carrots and peas)

Manufacturer Component Code SP017
 Outer Case GTIN 5060221530132



INGREDIENTS

Ingredient Declaration

Potato (26%) (water, potato flakes, palm oil, MILK protein, EGG, salt, natural butter flavour, glucose syrup, turmeric extract), salmon (FISH) (15%), carrot (13%), pea (13%), (rehydrated processed pea, water, sugar, salt, colours: copper chlorophyllin, carotenes), water, cream (MILK), modified maize starch, béchamel powder (skimmed MILK, hydrogenated vegetable fat [palm], MILK protein, modified potato starch, stabiliser: sodium alginate E401, salt, spices: white pepper, nutmeg, colour: beta carotene E160a), butter oil (MILK) (vegetable oil [rape, palm], salt, emulsifier: E322, flavouring: butter oil, colour: E160a), methyl cellulose, dill, salt, white pepper.

ALLERGENS

Product Contains:

Celery/Celeriac	May Contain	Mustard	May Contain
Cereals Containing Gluten	No	Nuts (Tree)	May Contain
Barley	No	Almond nuts	May Contain
Oats	No	Brazil nuts	May Contain
Rye	No	Cashew nuts	May Contain
Wheat (including Spelt and Khorasan)	No	Hazelnuts	May Contain
Crustacea	No	Macadamia (Queensland) nuts	May Contain
Eggs	Yes	Pecan nuts	May Contain
Fish	Yes	Pistachio nuts	May Contain
Lupin	No	Walnuts	May Contain
Milk	Yes	Peanuts	May Contain
Molluscs	No	Sesame Seeds	May Contain
		Soybeans	May Contain
		Sulphur Dioxide and Sulphites	No

Risk Source:

Celery/Celeriac (Risk Source)	Raw Material	Mustard (Risk Source)	Raw Material
Tree Nuts (Risk Source)	Raw Material	Almond nuts (Risk Source)	Raw Material
		Cashew nuts (Risk Source)	Raw Material
Hazelnuts (Risk Source)	Raw Material	Macadamia nuts (Risk Source)	Raw Material
Pecan nuts (Risk Source)	Raw Material	Pistachio nuts (Risk Source)	Raw Material
Walnuts (Risk Source)	Raw Material	Peanuts (Risk Source)	Raw Material
Sesame Seeds (Risk Source)	Raw Material	Soybeans (Risk Source)	Raw Material

SUPPLEMENTARY INGREDIENT INFORMATION

Palm Oil	Yes
Hydrogenated Vegetable Oil/Fat	No
GM Protein/DNA	No

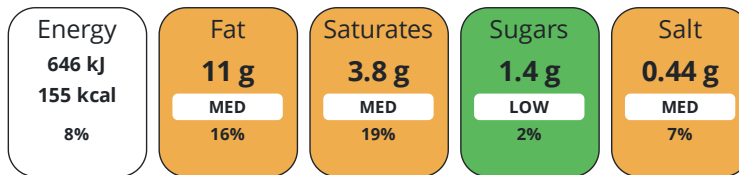
ADDITIVES

Product Contains:

DIET SUITABILITY

Vegan Diet	No	Vegetarian Diet	No
Halal Diet	No	Kosher Diet	No

Each 100g/ml portion contains:



of your reference intake.

Typical values per 100g/ml : Energy 155kcal / 646kJ

Nutrient	per 100g	RI per 100g	per 380g of prepared product
Energy (kJ)	646 kJ	8%	2454.8 kJ
Energy (kcal)	155 kcal	8%	589 kcal
Fat	11 g	16%	41.8 g
of which Saturates	3.8 g	19%	14.4 g
Carbohydrate	8.5 g	3%	32.3 g
of which Sugars	1.4 g	2%	5.3 g
Fibre	1.3 g		4.9 g
Protein	5.7 g	11%	21.7 g
Salt	0.44 g	7%	1.7 g
Sodium	179 mg		680.2 mg

Source of Nutritional Information Manufacturers analysis

SUPPLEMENTARY
NUTRITIONAL
INFORMATION

HANDLING &
STORAGE
INFORMATION

Directions For Use

HEAT FROM FROZEN Microwave at 800w for 5-7 minutes Conventional oven Place in pre-heated oven 150.c for 40-45 minutes.
HEAT TO CORE TEMPERTURE OF MINIMUM +75.c once heated do not reheat

Storage Instructions

Store at -18.C or colder in a clean environment. Shelf life 15 months from manufacture. Do not stack more than 6 cases high on a full pallet, Loose individual products do not stack more than 2 high and always store in container or box. Handle with care as C-Pet meal container becomes fragile at low temperatures and will shatter if dropped or mishandled.

Shelf Life from Time of Production 450 Days

ORIGIN

Product Country of Origin/Place of United Kingdom

Provenance

PRODUCT
CHARACTERISTICS

Standards Testing

Is shelf life testing undertaken? Yes

Commercially Sterile Yes

CONFIGURATION

Case Configuration

Inner Pack Configuration

Variable Inner Components in Outer Case Yes

Total Quantity of Inner Components in 12 Units

Outer Case

Total Quantity of Inner Packs in Outer 12 Units

Case

Is the Outer Case Splittable? Yes

PRODUCT WEIGHTS

Inner Component	
Variable Weight Consumer Item	No
Inner Component Weight	380 g
Outer Case	
Outer Case Gross Weight	5.04 kg
Outer Case Net Weight	4.56 kg

Inner Pack	
Inner Pack Gross Weight	380 g

PRODUCT DIMENSIONS

Inner Component	
Inner Component Depth	190 mm
Inner Component Width	190 mm
Inner Component Height	40 mm
Outer Case	
Outer Case Depth	385 mm
Outer Case Width	200 mm
Outer Case Height	235 mm

Inner Pack	
Inner Pack Depth	190 mm
Inner Pack Width	190 mm
Inner Pack Height	40 mm

PALLET INFORMATION

Quantity of Cases Per Pallet Layer	15 Cases
Quantity of Layers Per Pallet	8 Layers
Quantity of Cases Per Pallet	120 Cases

Pallet Height	2 MTR
Pallet Gross Weight	528.68 kg

PACKAGING

Inner Component Packaging						
Type	Materials	Weight	Recycled Plastic %	Recyclable	Returnable	Composite
Poly Treated PET/PE	Paper/Cardboard	10 g	- %			

OTHER INFORMATION

Macaroni Cheese (Really cheesy macaroni rich in a cheesy sauce with mash, carrots and broccoli)

Manufacturer Component Code SP020
Outer Case GTIN 5060221530132



INGREDIENTS

Ingredient Declaration

Potato (26%) (water, potato flakes, palm oil, MILK protein, EGG, salt, natural butter flavour, glucose syrup, turmeric extract), carrot (13%), broccoli (13%), water, pasta (durum WHEAT semolina, water), cream (MILK), béchamel powder (skimmed MILK, hydrogenated vegetable fat [palm], MILK protein, modified potato starch, stabiliser: sodium alginate E401, salt, spices: white pepper, nutmeg, colour: beta carotene E160a), modified maize starch, cheese (MILK) (1%) (cheese, emulsifying salts: E330, E339), butter oil (MILK) (vegetable oil [rape, palm], salt, emulsifier: E322, flavouring: butter oil, colour: E160a), textured SOYA flour, methyl cellulose, MUSTARD, white pepper.

ALLERGENS

Product Contains:

Celery/Celery	May Contain	Mustard	Yes
Cereals Containing Gluten	Yes	Nuts (Tree)	May Contain
Barley	No	Almond nuts	May Contain
Oats	No	Brazil nuts	May Contain
Rye	No	Cashew nuts	May Contain
Wheat (including Spelt and Khorasan)	Yes	Hazelnuts	May Contain
Crustacea	No	Macadamia (Queensland) nuts	May Contain
Eggs	Yes	Pecan nuts	May Contain
Fish	No	Pistachio nuts	May Contain
Lupin	No	Walnuts	May Contain
Milk	Yes	Peanuts	May Contain
Molluscs	No	Sesame Seeds	May Contain
		Soybeans	Yes
		Sulphur Dioxide and Sulphites	No

Risk Source:

Celery/Celery (Risk Source)	Raw Material	Tree Nuts (Risk Source)	Raw Material
Almond nuts (Risk Source)	Raw Material	Brazil nuts (Risk Source)	Raw Material
Cashew nuts (Risk Source)	Raw Material	Hazelnuts (Risk Source)	Raw Material
Macadamia nuts (Risk Source)	Raw Material	Pecan nuts (Risk Source)	Raw Material
Pistachio nuts (Risk Source)	Raw Material	Walnuts (Risk Source)	Raw Material
Peanuts (Risk Source)	Raw Material	Sesame Seeds (Risk Source)	Raw Material

Additional Allergen Information

For allergens, including cereals containing gluten, see ingredients in CAPITALS, may also contain nuts, sesame and celery

SUPPLEMENTARY INGREDIENT INFORMATION

Hydrogenated Vegetable Oil/Fat	Yes
GM Protein/DNA	No

ADDITIVES

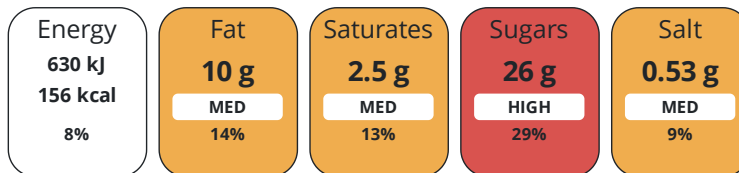
Product Contains:

DIET SUITABILITY

Vegan Diet	No	Vegetarian Diet	Suitable for
Halal Diet	No	Kosher Diet	No

NUTRITIONAL
INFORMATION

Each 100g/ml portion contains:



of your reference intake.

Typical values per 100g/ml : Energy 156kcal / 630kJ

Nutrient	per 100g	RI per 100g	per 380g of prepared product
Energy (kJ)	630 kJ	8%	2394 kJ
Energy (kcal)	156 kcal	8%	592.8 kcal
Fat	10 g	14%	38 g
of which Saturates	2.5 g	13%	9.9 g
Carbohydrate	26.1 g	10%	41.8 g
of which Sugars	26 g	29%	9.9 g
Protein	4 g	8%	15.2 g
Salt	0.53 g	9%	2 g
Sodium	211 mg		801.8 mg

Source of Nutritional Information Manufacturers analysis

SUPPLEMENTARY
NUTRITIONAL
INFORMATION

HANDLING &
STORAGE
INFORMATION

Directions For Use

HEAT FROM FROZEN Microwave at 800w for 5-7 minutes Conventional oven Place in pre-heated oven 150.c for 40-45 minutes.
HEAT TO CORE TEMPERTURE OF MINIMUM +75.c once heated do not reheat

Storage Instructions

Store at -18.C or colder in a clean environment. Shelf life 15 months from manufacture. Do not stack more than 6 cases high on a full pallet, Loose individual products do not stack more than 2 high and always store in container or box. Handle with care as C-Pet meal container becomes fragile at low temperatures and will shatter if dropped or mishandled.

Shelf Life from Time of Production 450 Days

ORIGIN

Product Country of Origin/Place of United Kingdom

Provenance

Standards Testing

PRODUCT
CHARACTERISTICS

Do you undertake trend analysis of microbiological results? Yes

Is shelf life testing undertaken? Yes

CONFIGURATION

Case Configuration

Inner Pack Configuration

Variable Inner Components in Outer Case Yes

Total Quantity of Inner Components in Outer Case 12 Units

Total Quantity of Inner Packs in Outer Case 12 Units

Is the Outer Case Splittable? Yes

PRODUCT WEIGHTS	Inner Component		Inner Pack				
	Variable Weight Consumer Item	No	Inner Pack Gross Weight		380 g		
	Inner Component Weight	380 g					
	Outer Case						
	Outer Case Gross Weight	5.04 kg					
PRODUCT DIMENSIONS	Inner Component		Inner Pack				
	Inner Component Depth	190 mm	Inner Pack Depth		190 mm		
	Inner Component Width	190 mm	Inner Pack Width		190 mm		
	Inner Component Height	40 mm	Inner Pack Height		40 mm		
	Outer Case						
	Outer Case Depth	385 mm					
	Outer Case Width	200 mm					
PALLET INFORMATION	Outer Case Height	235 mm					
	Quantity of Cases Per Pallet Layer	15 Cases	Pallet Height		2 MTR		
	Quantity of Layers Per Pallet	8 Layers	Pallet Gross Weight		528.68 kg		
	Quantity of Cases Per Pallet	120 Cases					
PACKAGING	Inner Component Packaging						
	Type	Materials	Weight	Recycled Plastic %	Recyclable	Returnable	Composite
	Poly Treated PET/PE	Plastic	10 g	- %			
OTHER INFORMATION							

Vegetable Lasagne (rich in cheese sauce with mash potatoes, carrots and green bean)

Manufacturer Component Code SP022
 Outer Case GTIN 5060221530132



INGREDIENTS

Ingredient Declaration

Potato (26%) (water, potato flakes, palm oil, MILK protein, EGG, salt, natural butter flavour, glucose syrup, turmeric extract), Carrots (13%), Green Beans (13%), Lentils, Cream, Onion, Tomato, Butter Oil (MILK) (vegetable oil [rape, palm], salt, emulsifier: E322, flavouring: butter oil, colour: E160a), Courgette, Aubergine, Rapeseed Oil, SOYA, Modified Maize Starch, MILK, Béchamel Powder (skimmed MILK, hydrogenated vegetable fat [palm], MILK protein, modified potato starch, stabiliser: sodium alginate E401, salt, spices: white pepper, nutmeg, colour: beta carotene E160a), Cheese Powder (MILK) (cheese, whey powder, salt), Pasta (durum WHEAT semolina, water), Methyl Cellulose, Salt, Herb And Spice, MUSTARD.

ALLERGENS

Product Contains:

Celery/Celериac	May Contain	Mustard	Yes
Cereals Containing Gluten	Yes	Nuts (Tree)	May Contain
Barley	No	Almond nuts	May Contain
Oats	No	Brazil nuts	May Contain
Rye	No	Cashew nuts	May Contain
Wheat (including Spelt and Khorasan)	Yes	Hazelnuts	May Contain
Crustacea	No	Macadamia (Queensland) nuts	May Contain
Eggs	Yes	Pecan nuts	May Contain
Fish	No	Pistachio nuts	May Contain
Lupin	No	Walnuts	May Contain
Milk	Yes	Peanuts	May Contain
Molluscs	No	Sesame Seeds	May Contain
		Soybeans	Yes
		Sulphur Dioxide and Sulphites	No

Risk Source:

Celery/Celериac (Risk Source)	Raw Material	Tree Nuts (Risk Source)	Raw Material
Almond nuts (Risk Source)	Raw Material	Brazil nuts (Risk Source)	Raw Material
Cashew nuts (Risk Source)	Raw Material	Hazelnuts (Risk Source)	Raw Material
Macadamia nuts (Risk Source)	Raw Material	Pecan nuts (Risk Source)	Raw Material
Pistachio nuts (Risk Source)	Raw Material	Walnuts (Risk Source)	Raw Material
Peanuts (Risk Source)	Raw Material	Sesame Seeds (Risk Source)	Raw Material

Additional Allergen Information

For allergens, including cereals containing gluten see ingredients in CAPITALS, may also contain nuts, sesame and celery

SUPPLEMENTARY INGREDIENT INFORMATION

Palm Oil	Yes
Hydrogenated Vegetable Oil/Fat	No
GM Protein/DNA	No

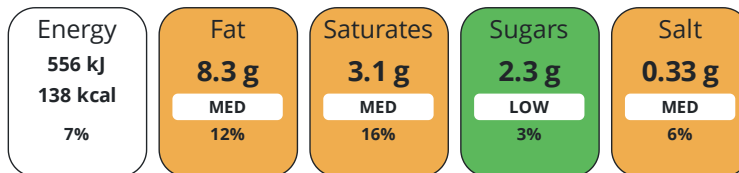
ADDITIVES

Product Contains:

DIET SUITABILITY

Vegan Diet	No	Vegetarian Diet	Suitable for
Halal Diet	No	Kosher Diet	No

Each 100g/ml portion contains:



of your reference intake.

Typical values per 100g/ml : Energy 138kcal / 556kj

Nutrient	per 100g	RI per 100g	per 380g of prepared product
Energy (kJ)	556 kJ	7%	2137 kJ
Energy (kcal)	138 kcal	7%	531 kcal
Fat	8.3 g	12%	33.8 g
of which Saturates	3.1 g	16%	13 g
Carbohydrate	10.4 g	4%	37.1 g
of which Sugars	2.3 g	3%	8.7 g
Fibre	2.5 g		7.5 g
Protein	4 g	8%	14.8 g
Salt	0.33 g	6%	1.03 g
Sodium	134 mg		410 mg

Source of Nutritional Information Manufacturers analysis

SUPPLEMENTARY
NUTRITIONAL
INFORMATION

HANDLING &
STORAGE
INFORMATION

Directions For Use

HEAT FROM FROZEN Microwave at 800w for 5-7 minutes Conventional oven Place in pre-heated oven 150.c for 40-45 minutes.
HEAT TO CORE TEMPERTURE OF MINIMUM +75.c once heated do not reheat

Storage Instructions

Store at -18.C or colder in a clean environment. Shelf life 15 months from manufacture. Do not stack more than 6 cases high on a full pallet, Loose individual products do not stack more than 2 high and always store in container or box. Handle with care as C-Pet meal container becomes fragile at low temperatures and will shatter if dropped or mishandled.

Shelf Life from Time of Production 450 Days

ORIGIN

Product Country of Origin/Place of United Kingdom

Provenance

PRODUCT
CHARACTERISTICS

Standards Testing

Do you undertake trend analysis of microbiological results? Yes

Is shelf life testing undertaken? Yes

CONFIGURATION

Case Configuration

Inner Pack Configuration

Variable Inner Components in Outer Case Yes

Total Quantity of Inner Components in Outer Case 12 Units

Total Quantity of Inner Packs in Outer Case 12 Units

Case

Is the Outer Case Splittable? Yes

PRODUCT WEIGHTS	Inner Component			Inner Pack			
	Variable Weight Consumer Item	No		Inner Pack Gross Weight	380 g		
	Inner Component Weight	380 g					
	Outer Case						
	Outer Case Gross Weight	5.04 kg					
	Outer Case Net Weight	4.56 kg					
PRODUCT DIMENSIONS	Inner Component			Inner Pack			
	Inner Component Depth	190 mm		Inner Pack Depth	190 mm		
	Inner Component Width	190 mm		Inner Pack Width	190 mm		
	Inner Component Height	40 mm		Inner Pack Height	40 mm		
	Outer Case						
	Outer Case Depth	385 mm					
	Outer Case Width	200 mm					
	Outer Case Height	235 mm					
PALLET INFORMATION	Quantity of Cases Per Pallet Layer	15 Cases		Pallet Height	2 MTR		
	Quantity of Layers Per Pallet	8 Layers		Pallet Gross Weight	528.68 kg		
	Quantity of Cases Per Pallet	120 Cases					
PACKAGING	Inner Component Packaging						
	Type	Materials	Weight	Recycled Plastic %	Recyclable	Returnable	Composite
	Poly Treated PET/PE	Plastic	10 g	- %			
OTHER INFORMATION CONTACT INFORMATION	Address			Technical Contact			
	Simply Food Solutions			Fiona Gleghorn			
	Eldon Street			Head of Technical			
	South Shields			fiona.gleghorn@simplyfoodsolutions.co.uk			
	Newcastle						
	Tyne and Wear			<u>P: (Phone) 07745648777</u>			
NE33 5BZ							
United Kingdom							
<u>P: (Phone) 01914560456</u>							
Complaints Contact							
Fiona Gleghorn							
Head of Technical							
fiona.gleghorn@simplyfoodsolutions.co.uk							
<u>P: (Phone) 077745648777</u>							

The information on the [Erudus System](#) has been supplied by the manufacturers of the products and, whilst the owners of the Erudus System take steps to ensure the information is regularly updated, they give no warranty and no guarantee that the information is accurate. Product information and ingredients may change, please always read product labels carefully in addition to using the information provided by Erudus.

We do not accept liability for any inaccuracies or incorrect information contained on this site.
Please visit <http://www.erudus.com/terms-and-conditions> for full terms and conditions.