

Changed May 16, 2024 15:06

Reviewed May 16, 2024 15:06

Erudus ID 05aadf25dc794877b0e2355df95fc640

Version 1.0

Mixed Level 4 Individual serve hot desserts

Level 4 Mixed Deesert (Multipack)

PRODUCT DESCRIPTION

Level 4 (Puree) Individual frozen desserts, Multipack 24 in total 6 of each

Brand	Simply Food Solutions
Manufacturer Product Code	L4MIXPUDDC
Product Type	Food
Product Category	Ready Meals
Storage Type	Frozen
Erudus ID	05aadf25dc794877b0e2355df95fc640
Specification Type	Generic

Lemon Sponge

Manufacturer Component Code	PD26
Outer Case GTIN	5060221530187



INGREDIENTS

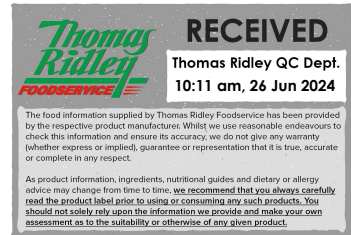
Ingredient Declaration

Custard (58%) (water, sugar, whey [MILK], modified maize starch, vegetable oil, MILK, flavourings, colour: annatto, silicon dioxide, salt), sponge (29%) (sugar, EGG, WHEAT flour, rapeseed oil, dextrose, MILK, emulsifiers: E471, E475, raising agents: E450, E500, rice, salt, SOYA, preservative: E202, colour: E160a, glycerine, vanilla essence, colour: E100), lemon curd (10%) (sugar, glucose, palm oil, modified waxy maize starch, acidity regulators: E330, E331, EGG, lemon juice, gelling agent: E440, natural flavouring, preservative: E202, colour: E161b), sugar, modified starch.

ALLERGENS

Product Contains:

Celery/Celериac	No	Mustard	No
Cereals Containing Gluten	Yes	Nuts (Tree)	May Contain
Barley	No	Almond nuts	May Contain
Oats	No	Brazil nuts	May Contain
Rye	No	Cashew nuts	May Contain
Wheat (including Spelt and Khorasan)	Yes	Hazelnuts	No
Crustacea	No	Macadamia (Queensland) nuts	May Contain
Eggs	Yes	Pecan nuts	May Contain
Fish	No	Pistachio nuts	May Contain
Lupin	No	Walnuts	May Contain
Milk	Yes	Peanuts	May Contain
Molluscs	No	Sesame Seeds	May Contain
		Soybeans	Yes
		Sulphur Dioxide and Sulphites	Yes



Risk Source:

Tree Nuts (Risk Source)	Raw Material	Almond nuts (Risk Source)	Raw Material
Brazil nuts (Risk Source)	Raw Material	Cashew nuts (Risk Source)	Raw Material
Macadamia nuts (Risk Source)	Raw Material	Pecan nuts (Risk Source)	Raw Material
Pistachio nuts (Risk Source)	Raw Material	Walnuts (Risk Source)	Raw Material
Peanuts (Risk Source)	Raw Material	Sesame Seeds (Risk Source)	Raw Material

Additional Allergen Information

For allergens see ingredients in CAPITALS

Palm Oil	Yes
Hydrogenated Vegetable Oil/Fat	No
GM Protein/DNA	No

Product Contains:

Vegan Diet	No	Vegetarian Diet	No
Halal Diet	No	Kosher Diet	No

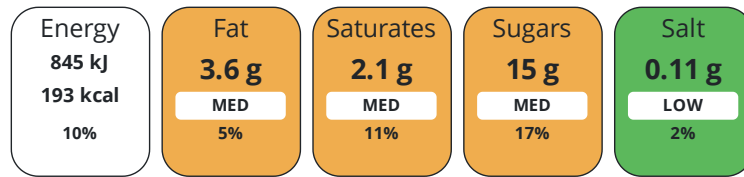
SUPPLEMENTARY
INGREDIENT
INFORMATION

ADDITIVES

DIET
SUITABILITY

NUTRITIONAL
INFORMATION

Each 100g/ml portion contains:



of your reference intake.

Typical values per 100g/ml : Energy 193kcal / 845kJ

Nutrient	per 100g	RI per 100g	per 150g serving	RI per 150g serving	per 150g of prepared product
Energy (kJ)	845 kJ	10%	1267.5 kJ	15%	1268 kJ
Energy (kcal)	193 kcal	10%	289.5 kcal	14%	289.5 kcal
Fat	3.6 g	5%	5.4 g	8%	8.8 g
of which Saturates	2.1 g	11%	3.2 g	16%	3.9 g
Carbohydrate	28 g	11%	42 g	16%	42 g
of which Sugars	15 g	17%	22.5 g	25%	22.5 g
Fibre	0.5 g		0.8 g		0.8 g
Protein	2 g	4%	3 g	6%	3 g
Salt	0.11 g	2%	0.2 g	3%	0.2 g
Sodium	40 mg		60 mg		60 mg
Serving Size	150 g				

Source of Nutritional Information Manufacturers analysis

SUPPLEMENTARY
NUTRITIONAL
INFORMATION

HANDLING &
STORAGE
INFORMATION

Directions For Use

HEAT FROM FROZEN Microwave 5-7 minutes 800w Conventional oven place in pre-heated oven 150.C for 25 mins. HEAT MEAL TO CORE TEMPERATURE OF MINIMUM 75.c, once heated do not re-heat.

Storage Instructions

Store at -18>C or colder in a clean environment. Shelf life 15 months from manufacturer. Do not stack more that 6 cases high on a full pallet, or more than 2 high and always store in a container or box. Take care as c-pet meal containers become fragile at low temperature and will shatter if dropped/mishandled

Shelf Life from Time of Production 450 Days

ACCREDITATIONS/
CERTIFICATIONS/
ASSURANCE
SCHEMES
ORIGIN

BRCGS Certified

Product Country of Origin/Place of United Kingdom

Provenance

PRODUCT
CHARACTERISTICS

Standards Testing

Do you undertake trend analysis of microbiological results? Yes

Is shelf life testing undertaken? Yes

CONFIGURATION

Case Configuration

Inner Pack Configuration

Total Quantity of Inner Components in 24 Units

Outer Case

Is the Outer Case Splittable? No

PRODUCT
WEIGHTS

Inner Component

Variable Weight Consumer Item No

Inner Component Weight 150 g

Outer Case

Outer Case Gross Weight 5.04 kg

Outer Case Net Weight 4.56 kg

PRODUCT
DIMENSIONS

Inner Component

Inner Component Depth 200 mm

Inner Component Width 190 mm

Inner Component Height 200 mm

Outer Case

Outer Case Depth 350 mm

Outer Case Width 190 mm

Outer Case Height 200 mm

PALLET
INFORMATION

Quantity of Cases Per Pallet Layer 105 Cases

Pallet Height 1.5 MTR

Quantity of Layers Per Pallet 7 Layers

Pallet Gross Weight 1.55 kg

Quantity of Cases Per Pallet 105 Cases

OTHER
INFORMATION

Chocolate sponge

Manufacturer Component Code

PD22

Outer Case GTIN

5060221530187



INGREDIENTS

Ingredient Declaration

Custard (65%) (water, sugar, dried whey [MILK], modified maize starch, vegetable oil, MILK proteins, flavourings, colour: annatto, anti caking agent: silicon dioxide, salt), sponge (25%) (sugar, EGG, **WHEAT** flour, non hydrogenated rapeseed oil, cake concentrate [dextrose monohydrate, skimmed MILK, emulsifiers: E471, E475 {veg origin}, raising agents: E450, E500, rice, SOYA, preservative: E202, colour: E160a], vegetable glycerine, MILK, emulsifier: E492, preservative: potassium sorbate, cocoa), modified starch, sugar.

ALLERGENS

Product Contains:

Celery/Celeriac	No	Mustard	No
Cereals Containing Gluten	Yes	Nuts (Tree)	May Contain
Barley	No	Almond nuts	May Contain
Oats	No	Brazil nuts	May Contain
Rye	No	Cashew nuts	May Contain
Wheat (including Spelt and Khorasan)	Yes	Hazelnuts	May Contain
Crustacea	No	Macadamia (Queensland) nuts	May Contain
Eggs	Yes	Pecan nuts	May Contain
Fish	No	Pistachio nuts	May Contain
Lupin	No	Walnuts	May Contain
Milk	Yes	Peanuts	May Contain
Molluscs	No	Sesame Seeds	May Contain
		Soybeans	Yes
		Sulphur Dioxide and Sulphites	Yes

Risk Source:

Tree Nuts (Risk Source)	Raw Material	Almond nuts (Risk Source)	Raw Material
Brazil nuts (Risk Source)	Raw Material	Cashew nuts (Risk Source)	Raw Material
Hazelnuts (Risk Source)	Raw Material	Macadamia nuts (Risk Source)	Raw Material
Walnuts (Risk Source)	Raw Material	Peanuts (Risk Source)	Raw Material
Sesame Seeds (Risk Source)	Raw Material		

Additional Allergen Information

For allergens see ingredients in CAPITALS

SUPPLEMENTARY INGREDIENT INFORMATION

Palm Oil	No
Hydrogenated Vegetable Oil/Fat	No
GM Protein/DNA	No

ADDITIVES

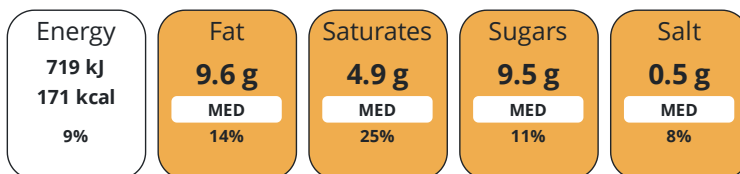
Product Contains:

DIET SUITABILITY

Vegan Diet	No	Vegetarian Diet	No
Halal Diet	No	Kosher Diet	No

NUTRITIONAL INFORMATION

Each 100g/ml portion contains:



of your reference intake.

Typical values per 100g/ml : Energy 171kcal / 719kj

Nutrient	per 100g	RI per 100g	per 150g of prepared product
Energy (kJ)	719 kJ	9%	1089 kJ
Energy (kcal)	171 kcal	9%	256 kcal
Fat	9.6 g	14%	8.8 g
of which Saturates	4.9 g	25%	3.2 g
Carbohydrate	14.3 g	6%	22.5 g
of which Sugars	9.5 g	11%	14.3 g
Protein	2.2 g	4%	3.3 g
Salt	0.5 g	8%	1.1 g
Sodium	27 mg		40 mg

Source of Nutritional Information Manufacturers analysis

SUPPLEMENTARY
NUTRITIONAL
INFORMATION

HANDLING &
STORAGE
INFORMATION

Directions For Use

HEAT FROM FROZEN Microwave 5-7 minutes 800w Conventional oven place in pre-heated oven 150.C for 25 mins. HEAT MEAL TO CORE TEMPERATURE OF MINIMUM 75.c, once heated do not re-heat.

Storage Instructions

Store at -18>C or colder in a clean environment. Shelf life 15 months from manufacturer. Do not stack more that 6 cases high on a full pallet, or more than 2 high and always store in a container or box. Take care as c-pet meal containers become fragile at low temperature and will shatter if dropped/mishandled

Shelf Life from Time of Production 450 Days

ACCREDITATIONS/
CERTIFICATIONS/
ASSURANCE
SCHEMES
ORIGIN

BRCGS Certified

Product Country of Origin/Place of United Kingdom

Provenance

PRODUCT
CHARACTERISTICS

Standards Testing

Do you undertake trend analysis of Yes
microbiological results?

Is shelf life testing undertaken? Yes

CONFIGURATION

Case Configuration

Inner Pack Configuration

Total Quantity of Inner Components in 24 Units

Outer Case

Is the Outer Case Splittable? No

PRODUCT
WEIGHTS

Inner Component

Variable Weight Consumer Item No

Inner Component Weight 150 g

Outer Case

Outer Case Gross Weight 5.04 kg

Outer Case Net Weight 4.56 kg

PRODUCT
DIMENSIONS

Inner Component

Inner Component Depth	190 mm
Inner Component Width	350 mm
Inner Component Height	200 mm

Outer Case

Outer Case Depth	350 mm
Outer Case Width	190 mm
Outer Case Height	200 mm

PALLET
INFORMATION

Quantity of Cases Per Pallet Layer	105 Cases
Quantity of Layers Per Pallet	7 Layers
Quantity of Cases Per Pallet	105 Cases

Pallet Height	1.5 MTR
Pallet Gross Weight	1.55 kg

OTHER
INFORMATION

Jam Sponge

Manufacturer Component Code

PD28

Outer Case GTIN

5060221530187



INGREDIENTS

Ingredient Declaration

Custard (45 %) (water, sugar, dried whey (MILK), modified maize starch, vegetable oil (palm), sodium caseinates (MILK), flavourings, anti-caking agent: silicon dioxide, colour: annatto), jam (33%) (water, glucose syrup, sugar, apple puree [apple puree, preservative: SULPHUR DIOXIDE], plum puree, apricot puree, colour: anthocyanin, acidity regulator: trisodium citrate, gelling agent: pectin, acidity regulator: citric acid, natural flavour), sponge (19%) (sugar, **EGG**, **WHEAT** flour, rapeseed oil, dextrose, MILK, emulsifiers: E471, E475, raising agents: E450, E500, rice, salt, **SOYA**, preservative: E202, colour: E160a, glycerine, vanilla essence, colour: E100), sugar, modified maize starch, methyl cellulose.

ALLERGENS

Product Contains:

Celery/Celeriac	No	Mustard	No
Cereals Containing Gluten	Yes	Nuts (Tree)	May Contain
Barley	No	Almond nuts	May Contain
Oats	No	Brazil nuts	May Contain
Rye	No	Cashew nuts	May Contain
Wheat (including Spelt and Khorasan)	Yes	Hazelnuts	May Contain
Crustacea	No	Macadamia (Queensland) nuts	May Contain
Eggs	Yes	Pecan nuts	May Contain
Fish	No	Pistachio nuts	May Contain
Lupin	No	Walnuts	May Contain
Milk	Yes	Peanuts	May Contain
Molluscs	No	Sesame Seeds	May Contain
		Soybeans	Yes
		Sulphur Dioxide and Sulphites	No

Risk Source:

Tree Nuts (Risk Source)	Raw Material	Almond nuts (Risk Source)	Raw Material
Brazil nuts (Risk Source)	Raw Material	Cashew nuts (Risk Source)	Raw Material
Hazelnuts (Risk Source)	Raw Material	Macadamia nuts (Risk Source)	Raw Material
Pecan nuts (Risk Source)	Raw Material	Pistachio nuts (Risk Source)	Raw Material
Walnuts (Risk Source)	Raw Material	Peanuts (Risk Source)	Raw Material
Sesame Seeds (Risk Source)	Raw Material		

Additional Allergen Information

For allergens see ingredients in CAPITALS

SUPPLEMENTARY INGREDIENT INFORMATION

Palm Oil	Yes
Hydrogenated Vegetable Oil/Fat	No
GM Protein/DNA	No

ADDITIVES

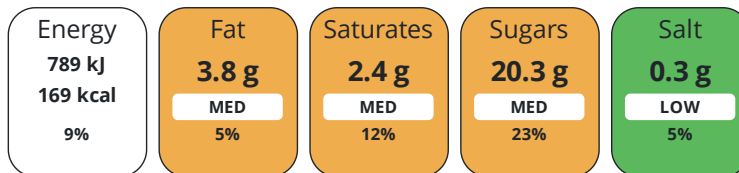
Product Contains:

DIET SUITABILITY

Vegan Diet	No	Vegetarian Diet	No
Halal Diet	No	Kosher Diet	No

NUTRITIONAL INFORMATION

Each 100g/ml portion contains:



of your reference intake.

Typical values per 100g/ml : Energy 169kcal / 789kj

Nutrient	per 100g	RI per 100g	per 150g of prepared product
Energy (kJ)	789 kJ	9%	1064 kJ
Energy (kcal)	169 kcal	8%	253 kcal
Fat	3.8 g	5%	5.7 g
of which Saturates	2.4 g	12%	3.6 g
Carbohydrate	27.7 g	11%	41.5 g
of which Sugars	20.3 g	23%	30.5 g
Fibre	0.3 g		0.7 g
Protein	1.7 g	3%	2.5 g
Salt	0.3 g	5%	0.45 g
Sodium	120 mg		180 mg

Source of Nutritional Information Manufacturers analysis

SUPPLEMENTARY NUTRITIONAL INFORMATION

HANDLING & STORAGE INFORMATION

Directions For Use

HEAT FROM FROZEN Microwave 5-7 minutes 800w Conventional oven place in pre-heated oven 150.C for 25 mins. HEAT MEAL TO CORE TEMPERATURE OF MINIMUM 75.c, once heated do not re-heat.

Storage Instructions

Store at -18>C or colder in a clean environment. Shelf life 15 months from manufacturer. Do not stack more that 6 cases high on a full pallet, or more than 2 high and always store in a container or box. Take care as c-pet meal containers become fragile at low temperature and will shatter if dropped/mishandled

Shelf Life from Time of Production 450 Days

ACCREDITATIONS/ CERTIFICATIONS/ ASSURANCE SCHEMES ORIGIN

BRCGS Certified

Product Country of Origin/Place of United Kingdom

Provenance

PRODUCT CHARACTERISTICS

Standards Testing

Do you undertake trend analysis of microbiological results? Yes

Is shelf life testing undertaken? Yes

CONFIGURATION

Case Configuration

Inner Pack Configuration

Total Quantity of Inner Components in Outer Case 24 Units

Is the Outer Case Splittable? No

PRODUCT WEIGHTS

Inner Component	
Variable Weight Consumer Item	No
Inner Component Weight	150 g
Outer Case	
Outer Case Gross Weight	5.04 kg
Outer Case Net Weight	4.56 kg

PRODUCT DIMENSIONS

Inner Component	
Inner Component Depth	190 mm
Inner Component Width	350 mm
Inner Component Height	200 mm
Outer Case	
Outer Case Depth	350 mm
Outer Case Width	190 mm
Outer Case Height	200 mm

PALLET INFORMATION

Quantity of Cases Per Pallet Layer	105 Cases	Pallet Height	1.5 MTR
Quantity of Layers Per Pallet	7 Layers	Pallet Gross Weight	1.55 kg
Quantity of Cases Per Pallet	105 Cases		

OTHER INFORMATION

Sticky Toffee

Manufacturer Component Code

PD33

Outer Case GTIN

5060221530187



INGREDIENTS

Ingredient Declaration

Water, Sponge(17%)(Sugar, **EGG,WHEAT**,Rapeseed Oil, Cake [**WHEAT**, Sugar, Vegetable Oil, Dextrose, EGG, MILK, Emulsifiers: E471,E475, Raising Agents: E450,E500, Rice, WHEAT Starch, Albumen (EGG), Salt, **SOYA**, Preservative (E202), Colour (E160a)], Vegetable Glycerine, Emulsifiers: E471, E475 (Vegetable Origin), Preservative (Potassium Sorbate), Raising Agent: Sodium Bicarbonate, Vanilla, Colour:E100), Cream (14%) (MILK), Custard (Sugar, Whey (MILK), Maize Starch, Palm Oil, Sodium Caseinates (MILK), Flavourings, Salt, Anti-Caking Agent: Silicon Dioxide, Colour: Annatto), Golden Syrup (SULPHUR DIOXIDE), Butter Oil (Vegetable Oil [Rape, Palm], Salt, Emulsifier: E322, Flavouring: Butter Oil (MILK), Colour: E160a), Brown Sugar, Modified Starch, Treacle (**SULPHUR DIOXIDE**).

ALLERGENS

Product Contains:

Celery/Celeriac	No	Mustard	No
Cereals Containing Gluten	Yes	Nuts (Tree)	May Contain
Barley	No	Almond nuts	May Contain
Oats	No	Brazil nuts	May Contain
Rye	No	Cashew nuts	May Contain
Wheat (including Spelt and Khorasan)	Yes	Hazelnuts	May Contain
Crustacea	No	Macadamia (Queensland) nuts	May Contain
Eggs	Yes	Pecan nuts	May Contain
Fish	No	Pistachio nuts	May Contain
Lupin	No	Walnuts	May Contain
Milk	Yes	Peanuts	May Contain
Molluscs	No	Sesame Seeds	May Contain
		Soybeans	Yes
		Sulphur Dioxide and Sulphites	No

Risk Source:

Tree Nuts (Risk Source)	Raw Material	Almond nuts (Risk Source)	Raw Material
Brazil nuts (Risk Source)	Raw Material	Cashew nuts (Risk Source)	Raw Material
Hazelnuts (Risk Source)	Raw Material	Macadamia nuts (Risk Source)	Raw Material
Pecan nuts (Risk Source)	Raw Material	Pistachio nuts (Risk Source)	Raw Material
Walnuts (Risk Source)	Raw Material	Peanuts (Risk Source)	Raw Material
Sesame Seeds (Risk Source)	Raw Material		

Additional Allergen Information

For allergens see ingredients in CAPITALS

SUPPLEMENTARY INGREDIENT INFORMATION

Palm Oil	Yes
Hydrogenated Vegetable Oil/Fat	No
GM Protein/DNA	No

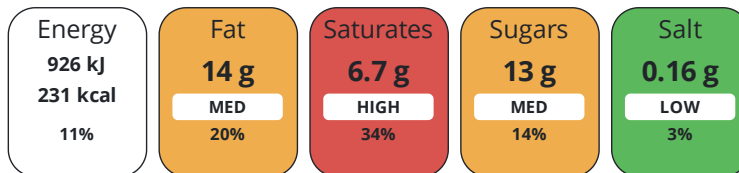
ADDITIVES

Product Contains:

DIET SUITABILITY

Vegan Diet	No	Vegetarian Diet	No
Halal Diet	No	Kosher Diet	No

Each 100g/ml portion contains:



of your reference intake.

Typical values per 100g/ml : Energy 231kcal / 926kJ

Nutrient	per 100g	RI per 100g	per 150g of prepared product
Energy (kJ)	926 kJ	11%	1443 kJ
Energy (kcal)	231 kcal	12%	346 kcal
Fat	14 g	20%	22 g
of which Saturates	6.7 g	34%	10 g
Carbohydrate	19 g	7%	29 g
of which Sugars	13 g	14%	19 g
Fibre	0.3 g		0.4 g
Protein	1.5 g	3%	2.3 g
Salt	0.16 g	3%	0.24 g
Sodium	65 mg		98 mg

Source of Nutritional Information Manufacturers analysis

SUPPLEMENTARY
NUTRITIONAL
INFORMATION

HANDLING &
STORAGE
INFORMATION

Directions For Use

HEAT FROM FROZEN Microwave 5-7 minutes 800w Conventional oven place in pre-heated oven 150.C for 25 mins. HEAT MEAL TO CORE TEMPERATURE OF MINIMUM 75.c, once heated do not re-heat.

Storage Instructions

Store at -18>C or colder in a clean environment. Shelf life 15 months from manufacturer. Do not stack more that 6 cases high on a full pallet, or more than 2 high and always store in a container or box. Take care as c-pet meal containers become fragile at low temperature and will shatter if dropped/mishandled

Shelf Life from Time of Production 450 Days

ACCREDITATIONS/
CERTIFICATIONS/
ASSURANCE
SCHEMES
ORIGIN

BRCGS Certified

Product Country of Origin/Place of United Kingdom

Provenance

PRODUCT
CHARACTERISTICS

Standards Testing

Do you undertake trend analysis of microbiological results? Yes

Is shelf life testing undertaken? Yes

CONFIGURATION

Case Configuration

Inner Pack Configuration

Total Quantity of Inner Components in Outer Case 24 Units

Is the Outer Case Splittable? No

PRODUCT WEIGHTS

Inner Component	
Variable Weight Consumer Item	No
Inner Component Weight	150 g
Outer Case	
Outer Case Gross Weight	5.04 kg
Outer Case Net Weight	4.56 kg

PRODUCT DIMENSIONS

Inner Component	
Inner Component Depth	190 mm
Inner Component Width	350 mm
Inner Component Height	200 mm
Outer Case	
Outer Case Depth	350 mm
Outer Case Width	190 mm
Outer Case Height	200 mm

PALLET INFORMATION

Quantity of Cases Per Pallet Layer	105 Cases	Pallet Height	1.5 MTR
Quantity of Layers Per Pallet	7 Layers	Pallet Gross Weight	1.55 kg
Quantity of Cases Per Pallet	105 Cases		

OTHER INFORMATION CONTACT INFORMATION

Address	Technical Contact
Simply Food Solutions	Fiona Gleghorn
Eldon Street	Head of Technical
South Shields	fiona.gleghorn@simplyfoodsolutions.co.uk
Newcastle	
Tyne and Wear	<u>P: (Phone) 07745648777</u>
NE33 5BZ	
United Kingdom	
<u>P: (Phone) 01914560456</u>	
Complaints Contact	
Fiona Gleghorn	
Head of Technical	
fiona.gleghorn@simplyfoodsolutions.co.uk	
<u>P: (Phone) 077745648777</u>	

The information on the [Erudus System](#) has been supplied by the manufacturers of the products and, whilst the owners of the Erudus System take steps to ensure the information is regularly updated, they give no warranty and no guarantee that the information is accurate. Product information and ingredients may change, please always read product labels carefully in addition to using the information provided by Erudus.

We do not accept liability for any inaccuracies or incorrect information contained on this site.
Please visit <http://www.erudus.com/terms-and-conditions> for full terms and conditions.