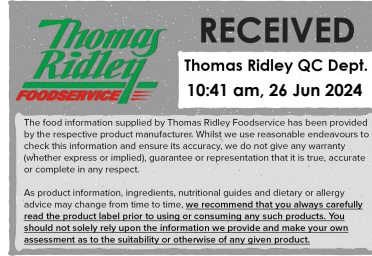


Changed May 10, 2024 06:20

Reviewed May 10, 2024 06:20

Erudus ID 2eab87d8c76a4d75a6b8709df67ef36d

Version 1.0



Ethnic mixed halal meals

Mixed Case Of Individual Ethnic Meals (Multipack)

PRODUCT DESCRIPTION

mixed case of 12 compartment halal suitable 3 compartment meals with 3 variety in each case

Brand	Simply Food Solutions
Manufacturer Product Code	HTCMIXC
Product Type	Food
Product Category	Ready Meals
Storage Type	Frozen
Erudus ID	2eab87d8c76a4d75a6b8709df67ef36d
Specification Type	Generic

Mixed Vegetable Curry

Manufacturer Component Code	HTC05
Outer Case GTIN	5060221530224



INGREDIENTS

Ingredient Declaration

Cooked Rice (34%) (water, rice, rapeseed oil, salt and herbs), onion, water, red split lentils (5%), potato (4%) (potato, sunflower oil, dextrose), cauliflower (3%), courgette (3%), carrot (3%), peas, green bean, tomato, rapeseed oil, peppers, herbs and spices, salt, modified starch, potato powder (potato, emulsifier: E471, stabilizer: E450, preservative: sodium METABISULPHITE).

ALLERGENS

Product Contains:

Celery/Celериac	May Contain	Mustard	May Contain
Cereals Containing Gluten	May Contain	Nuts (Tree)	May Contain
Barley	No	Almond nuts	May Contain
Oats	No	Brazil nuts	May Contain
Rye	No	Cashew nuts	May Contain
Wheat (including Spelt and Khorasan)	May Contain	Hazelnuts	No
Crustacea	No	Macadamia (Queensland) nuts	May Contain
Eggs	May Contain	Pecan nuts	May Contain
Fish	No	Pistachio nuts	May Contain
Lupin	No	Walnuts	May Contain
Milk	May Contain	Peanuts	May Contain
Molluscs	No	Sesame Seeds	May Contain
		Soybeans	May Contain
		Sulphur Dioxide and Sulphites	Yes

Risk Source:

Celery/Celery (Risk Source)	Raw Material
Wheat (Risk Source)	Raw Material
Milk (Risk Source)	Raw Material
Tree Nuts (Risk Source)	Raw Material
Brazil nuts (Risk Source)	Raw Material
Macadamia nuts (Risk Source)	Raw Material
Pistachio nuts (Risk Source)	Raw Material
Peanuts (Risk Source)	Raw Material
Soybeans (Risk Source)	Raw Material

Cereals Containing Gluten (Risk Source)	Raw Material
Eggs (Risk Source)	Raw Material
Mustard (Risk Source)	Raw Material
Almond nuts (Risk Source)	Raw Material
Cashew nuts (Risk Source)	Raw Material
Pecan nuts (Risk Source)	Raw Material
Walnuts (Risk Source)	Raw Material
Sesame Seeds (Risk Source)	Raw Material

Additional Allergen Information

Please see packaging for allergens in BOLD, may contain nuts, soya and mustard

SUPPLEMENTARY
INGREDIENT
INFORMATION

Palm Oil	No
Hydrogenated Vegetable Oil/Fat	No
GM Protein/DNA	No

ADDITIVES

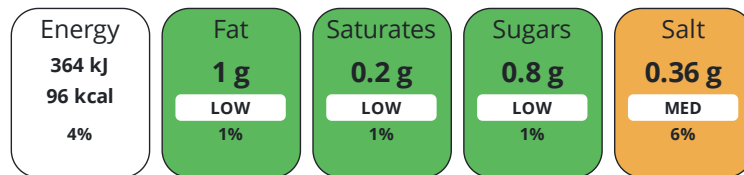
Product Contains:

DIET
SUITABILITY

Vegan Diet	Suitable for	Vegetarian Diet	Suitable for
Halal Diet	Certified	Kosher Diet	No

NUTRITIONAL
INFORMATION

Each 100g/ml portion contains:



of your reference intake.

Typical values per 100g/ml : Energy 96kcal / 364kJ

Nutrient	per 100g	RI per 100g	per 380g of prepared product
Energy (kJ)	364 kJ	4%	1535 kJ
Energy (kcal)	96 kcal	5%	404 kcal
Fat	1 g	1%	2.7 g
of which Saturates	0.2 g	1%	0.9 g
Carbohydrate	1.5 g	1%	5.5 g
of which Sugars	0.8 g	1%	3.1 g
Fibre	3.9 g		1 g
Protein	1.1 g	2%	2.8 g
Salt	0.36 g	6%	1.4 g
Sodium	157 mg		597 mg
Number of Servings	1 Servings		
Source of Nutritional Information	Manufacturers analysis		

SUPPLEMENTARY
NUTRITIONAL
INFORMATION

HANDLING &
STORAGE
INFORMATION

Directions For Use

HEAT FROM FROZEN: Microwave heat at 700w for 8-9 minutes. Conventional oven: Place in pre-heated oven 150.C for 35-40 minutes. HEAT MEAL TO CORE TEMPERATURE MINIMUM OF +75.C. Once heated do not reheat.

Storage Instructions

Store at -18.C or colder in a clean environment. Shelf life 15 months from manufacture. Do not stack more than 6 cases high on a full pallet. Loose individual products do not stack more than two high and store in container/box. Handle with care as c-pet container becomes fragile at low temperature and will shatter if dropped or mishandled.

Shelf Life from Time of Production 450 Days

ACCREDITATIONS/
CERTIFICATIONS/
ASSURANCE
SCHEMES
ORIGIN

BRCGS Certified

Product Country of Origin/Place of United Kingdom

Provenance

PRODUCT
CHARACTERISTICS

Standards Testing

Do you undertake trend analysis of microbiological results?	Yes	Is shelf life testing undertaken?	Yes
--	-----	--	-----

CONFIGURATION

Case Configuration Inner Pack Configuration

Variable Inner Components in Outer Case Yes

Total Quantity of Inner Components in Outer Case 12 Units

Is the Outer Case Splittable? Yes

PRODUCT
WEIGHTS

Inner Component

Variable Weight Consumer Item No

Inner Component Weight 380 g

Outer Case

Outer Case Gross Weight 5.04 kg

Outer Case Net Weight 4.56 kg

PRODUCT
DIMENSIONS

Inner Component

Inner Component Depth 190 mm

Inner Component Width 190 mm

Inner Component Height 40 mm

Outer Case

Outer Case Depth 385 mm

Outer Case Width 200 mm

Outer Case Height 235 mm

PALLET
INFORMATION

Quantity of Cases Per Pallet Layer	12 Cases	Pallet Height	2 MTR
---	----------	----------------------	-------

Quantity of Layers Per Pallet	8 Layers	Pallet Gross Weight	528.68 kg
--------------------------------------	----------	----------------------------	-----------

Quantity of Cases Per Pallet	120 Cases
-------------------------------------	-----------

PACKAGING

Inner Component Packaging

Type	Materials	Weight	Recycled Plastic %	Recyclable	Returnable	Composite
Poly Treated PET/PE	Plastic	10 g	- %			

Outer Case Packaging

Type	Materials	Weight	Recycled Plastic %	Recyclable	Returnable	Composite
Case	Paper/Cardboard	30 g	- %	Yes		

Chicken Tikka Masala

Manufacturer Component Code

HTC02

Outer Case GTIN

5060221530224



INGREDIENTS

Ingredient Declaration

Cooked Rice (34%) (water, rice, rapeseed oil, salt and herbs), chicken (12%), onion, water, chick pea daal (9%), **yogurt (MILK)**, cream (MILK), tomato, rapeseed oil, peppers, herbs and spices, salt, lemon juice (lemon juice, preservatives: potassium METABISULPHITE), modified starch.

ALLERGENS

Product Contains:

Celery/Celeriac	No	Mustard	May Contain
Cereals Containing Gluten	No	Nuts (Tree)	May Contain
Barley	No	Almond nuts	May Contain
Oats	No	Brazil nuts	May Contain
Rye	No	Cashew nuts	May Contain
Wheat (including Spelt and Khorasan)	No	Hazelnuts	May Contain
Crustacea	No	Macadamia (Queensland) nuts	May Contain
Eggs	No	Pecan nuts	May Contain
Fish	No	Pistachio nuts	May Contain
Lupin	No	Walnuts	May Contain
Milk	Yes	Peanuts	May Contain
Molluscs	No	Sesame Seeds	May Contain
		Soybeans	May Contain
		Sulphur Dioxide and Sulphites	Yes

Risk Source:

Mustard (Risk Source)	Raw Material	Tree Nuts (Risk Source)	Raw Material
Almond nuts (Risk Source)	Raw Material	Brazil nuts (Risk Source)	Raw Material
Cashew nuts (Risk Source)	Raw Material	Hazelnuts (Risk Source)	Raw Material
Macadamia nuts (Risk Source)	Raw Material	Pecan nuts (Risk Source)	Raw Material
Pistachio nuts (Risk Source)	Raw Material	Walnuts (Risk Source)	Raw Material
Peanuts (Risk Source)	Raw Material	Sesame Seeds (Risk Source)	Raw Material
Soybeans (Risk Source)	Raw Material		

Additional Allergen Information

Please see packaging for allergens in BOLD, may contain nuts, soya and mustard

SUPPLEMENTARY INGREDIENT INFORMATION

Palm Oil	No
Hydrogenated Vegetable Oil/Fat	No
GM Protein/DNA	No

ADDITIVES

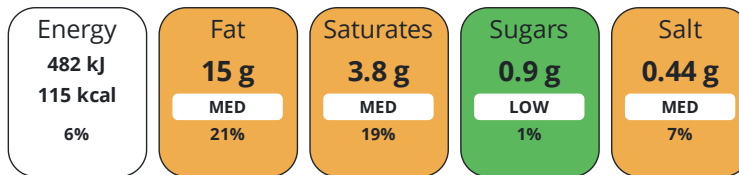
Product Contains:

DIET SUITABILITY

Vegan Diet	No	Vegetarian Diet	No
Halal Diet	Certified	Kosher Diet	No

NUTRITIONAL
INFORMATION

Each 100g/ml portion contains:



of your reference intake.

Typical values per 100g/ml : Energy 115kcal / 482kj

Nutrient	per 100g	RI per 100g	per 380g of prepared product
Energy (kJ)	482 kJ	6%	1837 kJ
Energy (kcal)	115 kcal	6%	482 kcal
Fat	15 g	21%	3.9 g
of which Saturates	3.8 g	19%	1 g
Carbohydrate	48 g	18%	14 g
of which Sugars	0.9 g	1%	2.1 g
Fibre	3.9 g		1.2 g
Protein	6.1 g	12%	23 g
Salt	0.44 g	7%	1.8 g

Number of Servings 1 Servings

Source of Nutritional Information Manufacturers analysis

SUPPLEMENTARY
NUTRITIONAL
INFORMATION

HANDLING &
STORAGE
INFORMATION

Directions For Use

HEAT FROM FROZEN: Microwave heat at 700w for 8-9 minutes. Conventional oven: Place in pre-heated oven 150.C for 35-40 minutes. HEAT MEAL TO CORE TEMPERATURE MINIMUM OF +75.C. Once heated do not reheat.

Storage Instructions

Store at -18.C or colder in a clean environment. Shelf life 15 months from manufacture. Do not stack more than 6 cases high on a full pallet. Loose individual products do not stack more than two high and store in container/box. Handle with care as c-pet container becomes fragile at low temperature and will shatter if dropped or mishandled.

Shelf Life from Time of Production 450 Days

ORIGIN

Product Country of Origin/Place of United Kingdom

Provenance

PRODUCT
CHARACTERISTICS
CONFIGURATION

Standards Testing

Case Configuration

Inner Pack Configuration

Variable Inner Components in Outer Case Yes

Total Quantity of Inner Components in 12 Units

Outer Case

Is the Outer Case Splittable? Yes

PRODUCT WEIGHTS

Inner Component	
Variable Weight Consumer Item	No
Inner Component Weight	380 g
Outer Case	
Outer Case Gross Weight	5.04 kg
Outer Case Net Weight	4.56 kg

PRODUCT DIMENSIONS

Inner Component	
Inner Component Depth	190 mm
Inner Component Width	190 mm
Inner Component Height	40 mm
Outer Case	
Outer Case Depth	385 mm
Outer Case Width	200 mm
Outer Case Height	235 mm

PALLET INFORMATION

Quantity of Cases Per Pallet Layer	12 Cases	Pallet Height	2 MTR
Quantity of Layers Per Pallet	8 Layers	Pallet Gross Weight	528.68 kg
Quantity of Cases Per Pallet	120 Cases		

PACKAGING

Inner Component Packaging						
Type	Materials	Weight	Recycled Plastic %	Recyclable	Returnable	Composite
Poly Treated PET/PE	Plastic	10 g	- %			
Outer Case Packaging						
Type	Materials	Weight	Recycled Plastic %	Recyclable	Returnable	Composite
Case	Paper/Cardboard	30 g	- %	Yes		

OTHER INFORMATION

Beef Curry

Manufacturer Component Code

HTC12

Outer Case GTIN

5060221530224



INGREDIENTS

Ingredient Declaration

Water, beef (15%), cooked rice (10%) (water, rice, rapeseed oil, salt and herbs), onion, red lentils (6%), tomato, rapeseed oil, peppers, herbs and spices, salt and modified starch.

ALLERGENS

Product Contains:

Celery/Celeriac	May Contain	Mustard	May Contain
Cereals Containing Gluten	No	Nuts (Tree)	May Contain
Barley	No	Almond nuts	May Contain
Oats	No	Brazil nuts	May Contain
Rye	No	Cashew nuts	May Contain
Wheat (including Spelt and Khorasan)	No	Hazelnuts	May Contain
Crustacea	No	Macadamia (Queensland) nuts	May Contain
Eggs	No	Pecan nuts	May Contain
Fish	No	Pistachio nuts	May Contain
Lupin	No	Walnuts	May Contain
Milk	Yes	Peanuts	May Contain
Molluscs	No	Sesame Seeds	May Contain
		Soybeans	May Contain
		Sulphur Dioxide and Sulphites	May Contain

Risk Source:

Celery/Celeriac (Risk Source)	Raw Material	Mustard (Risk Source)	Raw Material
Tree Nuts (Risk Source)	Raw Material	Almond nuts (Risk Source)	Raw Material
Brazil nuts (Risk Source)	Raw Material	Cashew nuts (Risk Source)	Raw Material
Hazelnuts (Risk Source)	Raw Material	Macadamia nuts (Risk Source)	Raw Material
Pecan nuts (Risk Source)	Raw Material	Pistachio nuts (Risk Source)	Raw Material
Walnuts (Risk Source)	Raw Material	Peanuts (Risk Source)	Raw Material
Sesame Seeds (Risk Source)	Raw Material	Soybeans (Risk Source)	Raw Material
Sulphur Dioxide and Sulphites (Risk Source)	Raw Material		

Additional Allergen Information

For allergens see ingredients in CAPITALS. May also contain nuts, sesame, soya, celery and mustard

SUPPLEMENTARY INGREDIENT INFORMATION

Palm Oil	No
GM Protein/DNA	No

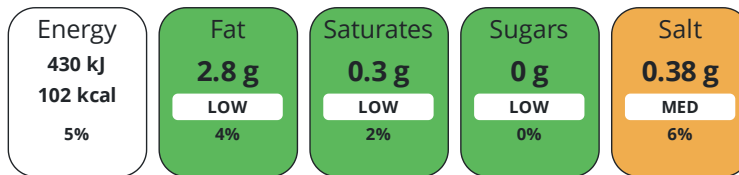
ADDITIVES

Product Contains:

DIET SUITABILITY

Vegan Diet	No	Vegetarian Diet	No
Halal Diet	Certified	Kosher Diet	No

Each 100g/ml portion contains:



of your reference intake.

Typical values per 100g/ml : Energy 102kcal / 430kj

Nutrient	per 100g	RI per 100g	per 380g of prepared product
Energy (kJ)	430 kJ	5%	1633 kJ
Energy (kcal)	102 kcal	5%	388 kcal
Fat	2.8 g	4%	11 g
of which Saturates	0.3 g	2%	1.3 g
Carbohydrate	1.3 g	1%	55 g
of which Sugars	0 g	0%	1.5 g
Fibre	0.5 g		2 g
Protein	5.6 g	11%	22 g
Salt	0.38 g	6%	1.5 g
Sodium	151 mg		606 mg

Number of Servings 1 Servings

Source of Nutritional Information Manufacturers analysis

SUPPLEMENTARY
NUTRITIONAL
INFORMATION

HANDLING &
STORAGE
INFORMATION

Directions For Use

HEAT FROM FROZEN: Microwave heat at 700w for 8-9 minutes. Conventional oven: Place in pre-heated oven 150.C for 35-40 minutes. HEAT MEAL TO CORE TEMPERATURE MINIMUM OF +75.C. Once heated do not reheat.

Storage Instructions

Store at -18.C or colder in a clean environment. Shelf life 15 months from manufacture. Do not stack more than 6 cases high on a full pallet. Loose individual products do not stack more than two high and store in container/box. Handle with care as c-pet container becomes fragile at low temperature and will shatter if dropped or mishandled.

Shelf Life from Time of Production 450 Days

ORIGIN

Product Country of Origin/Place of United Kingdom

Provenance

PRODUCT
CHARACTERISTICS

Standards Testing

Do you undertake trend analysis of microbiological results? Yes

Is shelf life testing undertaken? Yes

CONFIGURATION

Case Configuration

Inner Pack Configuration

Variable Inner Components in Outer Case Yes

Total Quantity of Inner Components in Outer Case 12 Units

Is the Outer Case Splittable? Yes

PRODUCT WEIGHTS

Inner Component	
Variable Weight Consumer Item	No
Inner Component Weight	380 g
Outer Case	
Outer Case Gross Weight	5.04 kg
Outer Case Net Weight	4.56 kg

PRODUCT DIMENSIONS

Inner Component	
Inner Component Depth	190 mm
Inner Component Width	190 mm
Inner Component Height	40 mm
Outer Case	
Outer Case Depth	385 mm
Outer Case Width	200 mm
Outer Case Height	235 mm

PALLET INFORMATION

Quantity of Cases Per Pallet Layer	12 Cases	Pallet Height	2 MTR
Quantity of Layers Per Pallet	8 Layers	Pallet Gross Weight	528.68 kg
Quantity of Cases Per Pallet	120 Cases		

PACKAGING

Inner Component Packaging						
Type	Materials	Weight	Recycled Plastic %	Recyclable	Returnable	Composite
Poly Treated PET/PE	Plastic	10 g	- %			
Outer Case Packaging						
Type	Materials	Weight	Recycled Plastic %	Recyclable	Returnable	Composite
Case	Paper/Cardboard	30 g	- %	Yes		

OTHER INFORMATION

Fish Masala

Manufacturer Component Code

HTC16

Outer Case GTIN

5060221530224



INGREDIENTS

Ingredient Declaration

Cooked rice (34%) (water, rice, rapeseed oil, salt and herbs), water, FISH (15%), onion, red lentils (5%), tomato, rapeseed oil, peppers, herbs and spices, salt, modified starch.

ALLERGENS

Product Contains:

Celery/Celериac	May Contain	Mustard	May Contain
Cereals Containing Gluten	No	Nuts (Tree)	May Contain
Barley	No	Almond nuts	May Contain
Oats	No	Brazil nuts	May Contain
Rye	No	Cashew nuts	May Contain
Wheat (including Spelt and Khorasan)	No	Hazelnuts	May Contain
Crustacea	No	Macadamia (Queensland) nuts	May Contain
Eggs	No	Pecan nuts	May Contain
Fish	Yes	Pistachio nuts	May Contain
Lupin	No	Walnuts	May Contain
Milk	Yes	Peanuts	May Contain
Molluscs	No	Sesame Seeds	May Contain
		Soybeans	May Contain
		Sulphur Dioxide and Sulphites	No

Risk Source:

Celery/Celериac (Risk Source)	Raw Material	Mustard (Risk Source)	Raw Material
Tree Nuts (Risk Source)	Raw Material	Almond nuts (Risk Source)	Raw Material
		Cashew nuts (Risk Source)	Raw Material
		Peanuts (Risk Source)	Raw Material
Sesame Seeds (Risk Source)	Raw Material	Soybeans (Risk Source)	Raw Material

Additional Allergen Information

Please see packaging for allergens in BOLD, may contain nuts, soya and mustard

SUPPLEMENTARY INGREDIENT INFORMATION

Hydrogenated Vegetable Oil/Fat	No
GM Protein/DNA	No

ADDITIVES

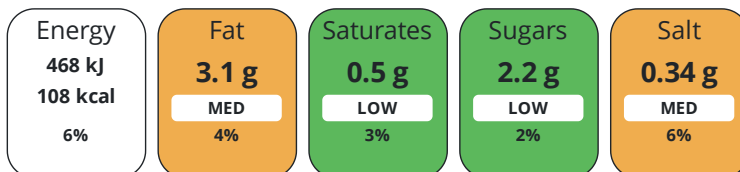
Product Contains:

DIET SUITABILITY

Vegan Diet	No	Vegetarian Diet	No
Halal Diet	Certified	Kosher Diet	No

NUTRITIONAL INFORMATION

Each 100g/ml portion contains:



of your reference intake.

Typical values per 100g/ml : Energy 108kcal / 468kj

Nutrient	per 100g	RI per 100g	per 380g of prepared product
Energy (kJ)	468 kJ	6%	1669 kJ
Energy (kcal)	108 kcal	5%	397 kcal
Fat	3.1 g	4%	12 g
of which Saturates	0.5 g	3%	2 g
Carbohydrate	13 g	5%	48 g
of which Sugars	2.2 g	2%	0.5 g
Protein	6 g	12%	21 g
Salt	0.34 g	6%	1.4 g
Sodium	134 mg		554 mg

Source of Nutritional Information Manufacturers analysis

SUPPLEMENTARY
NUTRITIONAL
INFORMATION

HANDLING &
STORAGE
INFORMATION

Directions For Use

HEAT FROM FROZEN: Microwave heat at 700w for 8-9 minutes. Conventional oven: Place in pre-heated oven 150.C for 35-40 minutes. HEAT MEAL TO CORE TEMPERATURE MINIMUM OF +75.C. Once heated do not reheat.

Storage Instructions

Store at -18.C or colder in a clean environment. Shelf life 15 months from manufacture. Do not stack more than 6 cases high on a full pallet. Loose individual products do not stack more than two high and store in container/box. Handle with care as c-pet container becomes fragile at low temperature and will shatter if dropped or mishandled.

Shelf Life from Time of Production 450 Days

ORIGIN

Product Country of Origin/Place of United Kingdom

Provenance

PRODUCT
CHARACTERISTICS

Standards Testing

Do you undertake trend analysis of microbiological results? Yes

Is shelf life testing undertaken? Yes

CONFIGURATION

Case Configuration

Inner Pack Configuration

Variable Inner Components in Outer Case Yes

Total Quantity of Inner Components in Outer Case 12 Units

Is the Outer Case Splittable? Yes

PRODUCT
WEIGHTS

Inner Component

Variable Weight Consumer Item No

Inner Component Weight 380 g

Outer Case

Outer Case Gross Weight 5.04 kg

Outer Case Net Weight 4.56 kg

PRODUCT DIMENSIONS

Inner Component	
Inner Component Depth	190 mm
Inner Component Width	190 mm
Inner Component Height	40 mm
Outer Case	
Outer Case Depth	385 mm
Outer Case Width	200 mm
Outer Case Height	235 mm

PALLET INFORMATION

Quantity of Cases Per Pallet Layer	12 Cases	Pallet Height	2 MTR
Quantity of Layers Per Pallet	8 Layers	Pallet Gross Weight	528.68 kg
Quantity of Cases Per Pallet	120 Cases		

PACKAGING

Inner Component Packaging						
Type	Materials	Weight	Recycled Plastic %	Recyclable	Returnable	Composite
Poly Treated PET/PE	Plastic	10 g	- %	No		
Outer Case Packaging						
Type	Materials	Weight	Recycled Plastic %	Recyclable	Returnable	Composite
Case	Paper/Cardboard	30 g	- %	Yes		

OTHER INFORMATION CONTACT INFORMATION

Address	Technical Contact
Simply Food Solutions	Fiona Gleghorn
Eldon Street	Head of Technical
South Shields	fiona.gleghorn@simplyfoodsolutions.co.uk
Newcastle	
Tyne and Wear	<u>P: (Phone)</u> 07745648777
NE33 5BZ	
United Kingdom	
 <u>P: (Phone)</u> 01914560456	
 Complaints Contact	
Fiona Gleghorn	
Head of Technical	
fiona.gleghorn@simplyfoodsolutions.co.uk	
 <u>P: (Phone)</u> 077745648777	

The information on the [Erudus System](#) has been supplied by the manufacturers of the products and, whilst the owners of the Erudus System take steps to ensure the information is regularly updated, they give no warranty and no guarantee that the information is accurate. Product information and ingredients may change, please always read product labels carefully in addition to using the information provided by Erudus.

We do not accept liability for any inaccuracies or incorrect information contained on this site. Please visit <http://www.erudus.com/terms-and-conditions> for full terms and conditions.