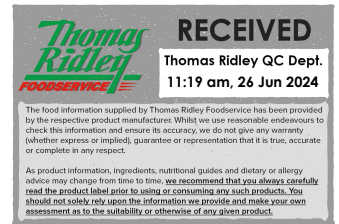


Changed May 21, 2024 14:58

Reviewed May 21, 2024 14:58

Erudus ID 97ec1e46e62a4462a273c02059a8b1fd

Version 2.0



# mixed case Non allergy meals (12 individual meals 3 of each)

Allergy Aware Mixed Case (Standard Diet) (Multipack)

## PRODUCT DESCRIPTION

MIXED ALLERGEN AWARE MEALS

Brand	Simply Food Solutions
Manufacturer Product Code	DNCMIXC
Product Type	Food
Product Category	Ready Meals
Storage Type	Frozen
Erudus ID	97ec1e46e62a4462a273c02059a8b1fd
Specification Type	Generic

## Beef Casserole ( with New Potatoes, Sweetcorn and Green Beans)

Manufacturer Component Code	DNC 001
Outer Case GTIN	5060221530217

## INGREDIENTS

### Ingredient Declaration

Potato (24%), beef (19%), water, green beans (13%), sweet corn (12%), swede, carrot, onion, rapeseed oil, potato (potato, sunflower oil, dextrose), pea, salt, gravy browning (water, colour: E150c, salt).

### Ingredient Statements

Non Present

## ALLERGENS

Product Contains:

Celery/Celeriac	No	Mustard	No
Cereals Containing Gluten	No	Nuts (Tree)	No
Barley	No	Almond nuts	No
Oats	No	Brazil nuts	No
Rye	No	Cashew nuts	No
Wheat (including Spelt and Khorasan)	No	Hazelnuts	No
Crustacea	No	Macadamia (Queensland) nuts	No
Eggs	No	Pecan nuts	No
Fish	No	Pistachio nuts	No
Lupin	No	Walnuts	No
Milk	No	Peanuts	No
Molluscs	No	Sesame Seeds	No
		Soybeans	No
		Sulphur Dioxide and Sulphites	No

## SUPPLEMENTARY INGREDIENT INFORMATION

Palm Oil	No
Hydrogenated Vegetable Oil/Fat	No
GM Protein/DNA	No

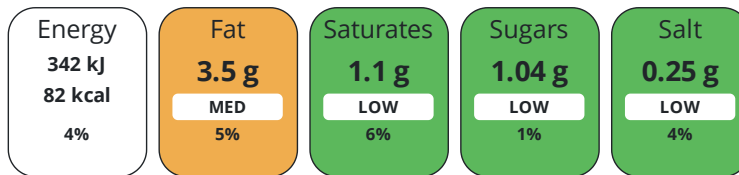
## ADDITIVES

Product Contains:

DIET SUITABILITY	Vegan Diet	No	Vegetarian Diet	No
	Halal Diet	No	Kosher Diet	No

NUTRITIONAL  
INFORMATION

Each 100g/ml portion contains:



of your reference intake.

Typical values per 100g/ml : Energy 82kcal / 342kj

Nutrient	per 100g	RI per 100g	per 380g of prepared product
Energy (kJ)	342 kJ	4%	1208 kJ
Energy (kcal)	82 kcal	4%	311 kcal
Fat	3.5 g	5%	13.3 g
of which Saturates	1.1 g	6%	4.2 g
Carbohydrate	6.3 g	2%	20.4 g
of which Sugars	1.04 g	1%	5.4 g
Fibre	1.7 g		6.4 g
Protein	5.2 g	10%	19.7 g
Salt	0.25 g	4%	0.95 g

**Source of Nutritional Information**      Manufacturers analysis

SUPPLEMENTARY  
NUTRITIONAL  
INFORMATION

HANDLING &  
STORAGE  
INFORMATION

**Directions For Use**

HEAT FROM FROZEN, Microwave. Heat 800w for 5-7 mins. Conventional oven, place in pre-heated oven for 150.C for 40-45 mins.  
HEAT MEAL TO CORE TEMPERATURE TO MINIMUM OF +75,C. Do not reheat.

**Storage Instructions**

Store at -18.C or below in a clean environment. Shelf life 15 months from manufacturer. Do not stack more than 6 cases high on a full pallet. Loose individual products do not stack more than 2 high and always store in container or box. Handle with care as c-pet meal containers become fragile at low temperature and will shatter if dropped or mishandled.

**Shelf Life from Time of Production**      450 Days

ACCREDITATIONS/  
CERTIFICATIONS/  
ASSURANCE  
SCHEMES  
ORIGIN

**BRCGS Certified**

**Product Country of Origin/Place of**      United Kingdom

**Provenance**

Standards Testing

PRODUCT  
CHARACTERISTICS

**Do you undertake trend analysis of microbiological results?**      Yes

**Is shelf life testing undertaken?**      Yes

CONFIGURATION

Case Configuration

Inner Pack Configuration

**Variable Inner Components in Outer Case**      No

**Total Quantity of Inner Components in**      12 Units

**Outer Case**

**Is the Outer Case Splittable?**      Yes

PRODUCT WEIGHTS

Inner Component	
<b>Variable Weight Consumer Item</b>	No
<b>Inner Component Weight</b>	380 g
Outer Case	
<b>Outer Case Gross Weight</b>	5.04 kg
<b>Outer Case Net Weight</b>	4.56 kg

PRODUCT DIMENSIONS

Inner Component	
<b>Inner Component Depth</b>	190 mm
<b>Inner Component Width</b>	190 mm
<b>Inner Component Height</b>	40 mm
Outer Case	
<b>Outer Case Depth</b>	385 mm
<b>Outer Case Width</b>	200 mm
<b>Outer Case Height</b>	235 mm

PALLET INFORMATION

<b>Quantity of Cases Per Pallet Layer</b>	15 Cases	<b>Pallet Height</b>	2 MTR
<b>Quantity of Layers Per Pallet</b>	8 Layers	<b>Pallet Gross Weight</b>	528.68 kg
<b>Quantity of Cases Per Pallet</b>	120 Cases		

PACKAGING

Inner Component Packaging						
Type	Materials	Weight	Recycled Plastic %	Recyclable	Returnable	Composite
Poly Treated PET/PE	Plastic	10 g	- %			
Outer Case Packaging						
Type	Materials	Weight	Recycled Plastic %	Recyclable	Returnable	Composite
Case	Paper/Cardboard	30 g	- %	Yes		

MARKETING INFORMATION

**Marketing Description**  
MIXED ALLERGEN AWARE MEALS

OTHER INFORMATION

# Chicken Casserole (with Parmentier Potatoes, Cauliflower and Green Beans).

<b>Manufacturer Component Code</b>	DNC002
<b>Outer Case GTIN</b>	5060221530217

## INGREDIENTS

### Ingredient Declaration

Potato (38%) ( potato, sunflower oil, dextrose), water, chicken (12%)(Chicken, Salt), cauliflower(11%), green bean (11%), onion, pea, carrot, modified maize starch, rapeseed oil, salt, gravy browning (water, colour E150c, salt).

### Ingredient Statements

Non present

## ALLERGENS

Product Contains:

<b>Celery/Celeriac</b>	No	<b>Mustard</b>	No
<b>Cereals Containing Gluten</b>	No	<b>Nuts (Tree)</b>	No
<b>Barley</b>	No	<b>Almond nuts</b>	No
<b>Oats</b>	No	<b>Brazil nuts</b>	No
<b>Rye</b>	No	<b>Cashew nuts</b>	No
<b>Wheat (including Spelt and Khorasan)</b>	No	<b>Hazelnuts</b>	No
<b>Crustacea</b>	No	<b>Macadamia (Queensland) nuts</b>	No
<b>Eggs</b>	No	<b>Pecan nuts</b>	No
<b>Fish</b>	No	<b>Pistachio nuts</b>	No
<b>Lupin</b>	No	<b>Walnuts</b>	No
<b>Milk</b>	No	<b>Peanuts</b>	No
<b>Molluscs</b>	No	<b>Sesame Seeds</b>	No
		<b>Soybeans</b>	No
		<b>Sulphur Dioxide and Sulphites</b>	No

## SUPPLEMENTARY INGREDIENT INFORMATION

<b>Palm Oil</b>	No
<b>Hydrogenated Vegetable Oil/Fat</b>	No
<b>GM Protein/DNA</b>	No

## ADDITIVES

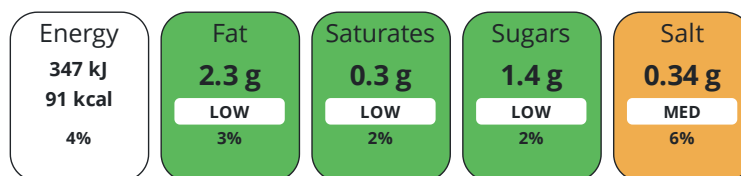
Product Contains:

## DIET SUITABILITY

<b>Vegan Diet</b>	No	<b>Vegetarian Diet</b>	No
<b>Halal Diet</b>	No	<b>Kosher Diet</b>	No

## NUTRITIONAL INFORMATION

Each 100g/ml portion contains:



of your reference intake.

Typical values per 100g/ml : Energy 91kcal / 347kJ

Nutrient	per 100g	RI per 100g	per 380g of prepared product
Energy (kJ)	347 kJ	4%	1461 kJ
Energy (kcal)	91 kcal	5%	384 kcal
Fat	2.3 g	3%	8.7 g
of which Saturates	0.3 g	2%	1 g
Carbohydrate	11.4 g	4%	43.5 g
of which Sugars	1.4 g	2%	5.8 g
Fibre	1.9 g		7.2 g
Protein	5.3 g	11%	20.1 g
Salt	0.34 g	6%	1.3 g
Sodium	137 mg		590 mg

**Source of Nutritional Information**      Manufacturers analysis

SUPPLEMENTARY  
NUTRITIONAL  
INFORMATION

HANDLING &  
STORAGE  
INFORMATION

**Directions For Use**

HEAT FROM FROZEN, Microwave. Heat 800w for 5-7 mins. Conventional oven, place in pre-heated oven for 150.C for 40-45 mins.  
HEAT MEAL TO CORE TEMPERATURE TO MINIMUM OF +75,C. Do not reheat.

**Storage Instructions**

Store at -18.C or below in a clean environment. Shelf life 15 months from manufacturer. Do not stack more than 6 cases high on a full pallet. Loose individual products do not stack more than 2 high and always store in container or box. Handle with care as c-pet meal containers become fragile at low temperature and will shatter if dropped or mishandled.

**Shelf Life from Time of Production**      450 Days

ORIGIN

**Product Country of Origin/Place of Provenance**      United Kingdom

PRODUCT  
CHARACTERISTICS

Standards Testing

**Do you undertake trend analysis of microbiological results?**      Yes

**Is shelf life testing undertaken?**      Yes

CONFIGURATION

Case Configuration

Inner Pack Configuration

**Variable Inner Components in Outer Case**      No

**Total Quantity of Inner Components in Outer Case**      12 Units

**Is the Outer Case Splittable?**      Yes

PRODUCT  
WEIGHTS

Inner Component

**Variable Weight Consumer Item**      No

**Inner Component Weight**      380 g

Outer Case

**Outer Case Gross Weight**      5.04 kg

**Outer Case Net Weight**      4.56 kg

PRODUCT DIMENSIONS

Inner Component	
<b>Inner Component Depth</b>	190 mm
<b>Inner Component Width</b>	190 mm
<b>Inner Component Height</b>	40 mm
Outer Case	
<b>Outer Case Depth</b>	385 mm
<b>Outer Case Width</b>	200 mm
<b>Outer Case Height</b>	235 mm

PALLET INFORMATION

<b>Quantity of Cases Per Pallet Layer</b>	15 Cases	<b>Pallet Height</b>	2 MTR
<b>Quantity of Layers Per Pallet</b>	8 Layers	<b>Pallet Gross Weight</b>	528.68 kg
<b>Quantity of Cases Per Pallet</b>	120 Cases		

PACKAGING

Inner Component Packaging						
Type	Materials	Weight	Recycled Plastic %	Recyclable	Returnable	Composite
Poly Treated PET/PE	Plastic	10 g	- %			
Outer Case Packaging						
Type	Materials	Weight	Recycled Plastic %	Recyclable	Returnable	Composite
Case	Paper/Cardboard	30 g	- %	Yes		

MARKETING INFORMATION

**Marketing Description**  
MIXED ALLERGEN AWARE MEALS

OTHER INFORMATION

# Harvest casserole ( with Roast potatoes, sweetcorn and mixed vegetable)

**Manufacturer Component Code** DNC004  
**Outer Case GTIN** 5060221530217



## INGREDIENTS

### Ingredient Declaration

Potato (35%) (Potato, Sunflower Oil, Dextrose), Water, Sweetcorn (10%), Carrot (10%), Onion, Peas, Green Bean, Mushrooms, Black Eye Beans (black eye beans, water, salt, ascorbic acid), Mixed Vegetable (carrot, garden pea, green bean, corn kernel, broad bean), Sweet Corn, Tomato, Bean water, salt, ascorbic acid), Peppers, Rapeseed Oil, Salt, Modified Starch, Herbs, Gravy Browning ( Water, Colour: E150c, Salt ).

### Ingredient Statements

Non present

## ALLERGENS

Product Contains:

<b>Celery/Celeriac</b>	No	<b>Mustard</b>	No
<b>Cereals Containing Gluten</b>	No	<b>Nuts (Tree)</b>	No
<b>Barley</b>	No	<b>Almond nuts</b>	No
<b>Oats</b>	No	<b>Brazil nuts</b>	No
<b>Rye</b>	No	<b>Cashew nuts</b>	No
<b>Wheat (including Spelt and Khorasan)</b>	No	<b>Hazelnuts</b>	No
<b>Crustacea</b>	No	<b>Macadamia (Queensland) nuts</b>	No
<b>Eggs</b>	No	<b>Pecan nuts</b>	No
<b>Fish</b>	No	<b>Pistachio nuts</b>	No
<b>Lupin</b>	No	<b>Walnuts</b>	No
<b>Milk</b>	No	<b>Peanuts</b>	No
<b>Molluscs</b>	No	<b>Sesame Seeds</b>	No
		<b>Soybeans</b>	No
		<b>Sulphur Dioxide and Sulphites</b>	No

## SUPPLEMENTARY INGREDIENT INFORMATION

<b>Palm Oil</b>	No
<b>Hydrogenated Vegetable Oil/Fat</b>	No
<b>GM Protein/DNA</b>	No

## ADDITIVES

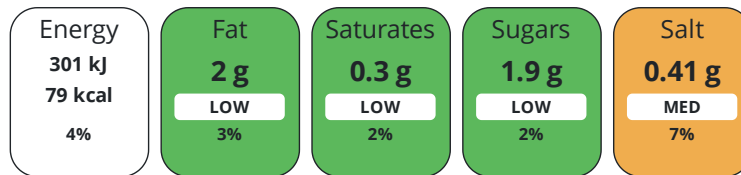
Product Contains:

## DIET SUITABILITY

<b>Vegan Diet</b>	Suitable for	<b>Vegetarian Diet</b>	Suitable for
<b>Halal Diet</b>	No	<b>Kosher Diet</b>	No

## NUTRITIONAL INFORMATION

Each 100g/ml portion contains:



of your reference intake.

Typical values per 100g/ml : Energy 79kcal / 301kj

Nutrient	per 100g	RI per 100g	per 380g of prepared product
Energy (kJ)	301 kJ	4%	1268 kJ
Energy (kcal)	79 kcal	4%	301 kcal
Fat	2 g	3%	8.2 g
of which Saturates	0.3 g	2%	1.4 g
Carbohydrate	12 g	5%	45 g
of which Sugars	1.9 g	2%	7.1 g
Fibre	2.7 g		10.4 g
Protein	2.4 g	5%	20.4 g
Salt	0.41 g	7%	1.8 g

**Source of Nutritional Information**      Manufacturers analysis

SUPPLEMENTARY  
NUTRITIONAL  
INFORMATION

HANDLING &  
STORAGE  
INFORMATION

**Directions For Use**

HEAT FROM FROZEN, Microwave. Heat 800w for 5-7 mins. Conventional oven, place in pre-heated oven for 150.C for 40-45 mins.

HEAT MEAL TO CORE TEMPERATURE TO MINIMUM OF +75,C. Do not reheat.

**Storage Instructions**

Store at -18.C or below in a clean environment. Shelf life 15 months from manufacturer. Do not stack more than 6 cases high on a full pallet. Loose individual products do not stack more than 2 high and always store in container or box. Handle with care as c-pet meal containers become fragile at low temperature and will shatter if dropped or mishandled.

**Shelf Life from Time of Production**      450 Days

ORIGIN

**Product Country of Origin/Place of**      United Kingdom

**Provenance**

Standards Testing

PRODUCT  
CHARACTERISTICS

**Do you undertake trend analysis of microbiological results?**      Yes

**Is shelf life testing undertaken?**      Yes

CONFIGURATION

Case Configuration

Inner Pack Configuration

**Variable Inner Components in Outer Case**      No

**Total Quantity of Inner Components in Outer Case**      12 Units

**Is the Outer Case Splittable?**      Yes

PRODUCT  
WEIGHTS

Inner Component

**Variable Weight Consumer Item**      No

**Inner Component Weight**      380 g

Outer Case

**Outer Case Gross Weight**      5.04 kg

**Outer Case Net Weight**      4.56 kg



PRODUCT DIMENSIONS

Inner Component	
<b>Inner Component Depth</b>	190 mm
<b>Inner Component Width</b>	190 mm
<b>Inner Component Height</b>	40 mm
Outer Case	
<b>Outer Case Depth</b>	385 mm
<b>Outer Case Width</b>	200 mm
<b>Outer Case Height</b>	235 mm

PALLET INFORMATION

<b>Quantity of Cases Per Pallet Layer</b>	15 Cases	<b>Pallet Height</b>	2 MTR
<b>Quantity of Layers Per Pallet</b>	8 Layers	<b>Pallet Gross Weight</b>	528.68 kg
<b>Quantity of Cases Per Pallet</b>	120 Cases		

PACKAGING

Inner Component Packaging						
Type	Materials	Weight	Recycled Plastic %	Recyclable	Returnable	Composite
Poly Treated PET/PE	Plastic	10 g	- %			
Outer Case Packaging						
Type	Materials	Weight	Recycled Plastic %	Recyclable	Returnable	Composite
Case	Paper/Cardboard	30 g	- %	Yes		

MARKETING INFORMATION

**Marketing Description**  
MIXED ALLERGEN AWARE MEALS

OTHER INFORMATION

# Ratatouille (Ratatouille with Rice and Peas.)

**Manufacturer Component Code** DNC007  
**Outer Case GTIN** 5060221530217



## INGREDIENTS

### Ingredient Declaration

Pea (30%), cooked rice (25%) (water, rice, rapeseed oil, salt), onion, water, courgette (7%), aubergine (5%), tomato, pepper, rapeseed oil, salt, garlic, modified maize starch.

### Ingredient Statements

Non present

## ALLERGENS

*Product Contains:*

<b>Celery/Celeriac</b>	No	<b>Mustard</b>	No
<b>Cereals Containing Gluten</b>	No	<b>Nuts (Tree)</b>	No
<b>Barley</b>	No	<b>Almond nuts</b>	No
<b>Oats</b>	No	<b>Brazil nuts</b>	No
<b>Rye</b>	No	<b>Cashew nuts</b>	No
<b>Wheat (including Spelt and Khorasan)</b>	No	<b>Hazelnuts</b>	No
<b>Crustacea</b>	No	<b>Macadamia (Queensland) nuts</b>	No
<b>Eggs</b>	No	<b>Pecan nuts</b>	No
<b>Fish</b>	No	<b>Pistachio nuts</b>	No
<b>Lupin</b>	No	<b>Walnuts</b>	No
<b>Milk</b>	No	<b>Peanuts</b>	No
<b>Molluscs</b>	No	<b>Sesame Seeds</b>	No
		<b>Soybeans</b>	No
		<b>Sulphur Dioxide and Sulphites</b>	No

## SUPPLEMENTARY INGREDIENT INFORMATION

<b>Palm Oil</b>	No
<b>Hydrogenated Vegetable Oil/Fat</b>	No
<b>GM Protein/DNA</b>	No

## ADDITIVES

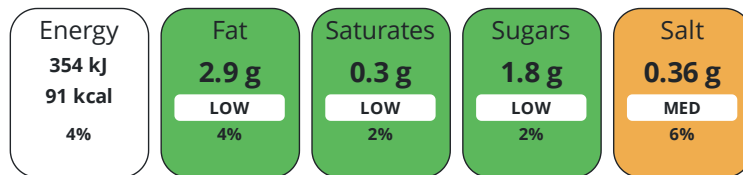
*Product Contains:*

## DIET SUITABILITY

<b>Vegan Diet</b>	Suitable for	<b>Vegetarian Diet</b>	Suitable for
<b>Halal Diet</b>	No	<b>Kosher Diet</b>	No

## NUTRITIONAL INFORMATION

Each 100g/ml portion contains:



of your reference intake.

Typical values per 100g/ml : Energy 91kcal / 354kj

Nutrient	per 100g	RI per 100g	per 380g of prepared product
Energy (kJ)	354 kJ	4%	1484 kJ
Energy (kcal)	91 kcal	5%	347 kcal
Fat	2.9 g	4%	10.9 g
of which Saturates	0.3 g	2%	1.2 g
Carbohydrate	12.4 g	5%	44.2 g
of which Sugars	1.8 g	2%	7.1 g
Fibre	2.6 g		9.8 g
Protein	2.6 g	5%	9.7 g
Salt	0.36 g	6%	1.6 g
Sodium	142 mg		625 mg

**Source of Nutritional Information**      Manufacturers analysis

SUPPLEMENTARY  
NUTRITIONAL  
INFORMATION

HANDLING &  
STORAGE  
INFORMATION

**Directions For Use**

HEAT FROM FROZEN, Microwave. Heat 800w for 5-7 mins. Conventional oven, place in pre-heated oven for 150.C for 40-45 mins.  
HEAT MEAL TO CORE TEMPERATURE TO MINIMUM OF +75,C. Do not reheat.

**Storage Instructions**

Store at -18.C or below in a clean environment. Shelf life 15 months from manufacturer. Do not stack more than 6 cases high on a full pallet. Loose individual products do not stack more than 2 high and always store in container or box. Handle with care as c-pet meal containers become fragile at low temperature and will shatter if dropped or mishandled.

**Shelf Life from Time of Production**      450 Days

ORIGIN

**Product Country of Origin/Place of Provenance**      United Kingdom

PRODUCT  
CHARACTERISTICS

Standards Testing

**Do you undertake trend analysis of microbiological results?**      Yes

**Is shelf life testing undertaken?**      Yes

CONFIGURATION

Case Configuration

Inner Pack Configuration

**Variable Inner Components in Outer Case**      No

**Total Quantity of Inner Components in Outer Case**      12 Units

**Is the Outer Case Splittable?**      Yes

PRODUCT  
WEIGHTS

Inner Component

**Variable Weight Consumer Item**      No

**Inner Component Weight**      380 g

Outer Case

**Outer Case Gross Weight**      5.04 kg

**Outer Case Net Weight**      4.56 kg

PRODUCT DIMENSIONS

Inner Component	
<b>Inner Component Depth</b>	190 mm
<b>Inner Component Width</b>	190 mm
<b>Inner Component Height</b>	40 mm
Outer Case	
<b>Outer Case Depth</b>	385 mm
<b>Outer Case Width</b>	200 mm
<b>Outer Case Height</b>	235 mm

PALLET INFORMATION

<b>Quantity of Cases Per Pallet Layer</b>	15 Cases	<b>Pallet Height</b>	2 MTR
<b>Quantity of Layers Per Pallet</b>	8 Layers	<b>Pallet Gross Weight</b>	528.68 kg
<b>Quantity of Cases Per Pallet</b>	120 Cases		

PACKAGING

Inner Component Packaging						
Type	Materials	Weight	Recycled Plastic %	Recyclable	Returnable	Composite
Poly Treated PET/PE	Plastic	10 g	- %			
Outer Case Packaging						
Type	Materials	Weight	Recycled Plastic %	Recyclable	Returnable	Composite
Case	Paper/Cardboard	30 g	- %	Yes		

MARKETING INFORMATION

**Marketing Description**  
MIXED ALLERGEN AWARE MEALS

OTHER INFORMATION CONTACT INFORMATION

Address	Technical Contact
Simply Food Solutions	Fiona Gleghorn
Eldon Street	Head of Technical
South Shields	fiona.gleghorn@simplyfoodsolutions.co.uk
Newcastle	
Tyne and Wear	<u>P: (Phone)</u> 07745648777
NE33 5BZ	
United Kingdom	
<u>P: (Phone)</u> 01914560456	
Complaints Contact	
Fiona Gleghorn	
Head of Technical	
fiona.gleghorn@simplyfoodsolutions.co.uk	
<u>P: (Phone)</u> 077745648777	

The information on the [Erudus System](#) has been supplied by the manufacturers of the products and, whilst the owners of the Erudus System take steps to ensure the information is regularly updated, they give no warranty and no guarantee that the information is accurate. Product information and ingredients may change, please always read product labels carefully in addition to using the information provided by Erudus.

We do not accept liability for any inaccuracies or incorrect information contained on this site. Please visit <http://www.erudus.com/terms-and-conditions> for full terms and conditions.