

Changed May 21, 2024 14:49

Reviewed May 21, 2024 14:49

Erudus ID d9ae5384aac54f178d022a0fe85ea536

Version 2.0

# Level 5 Minced & Moist Level 5 Main meal mixed case

Level 5 Main Meal (Mixed Case) (Multipack)

## PRODUCT DESCRIPTION

Mixed case of 12 individual meals 3 of each per case

Brand	Simply Food Solutions
Manufacturer Product Code	L5MIXC
Product Type	Food
Product Category	Ready Meals
Storage Type	Frozen
Erudus ID	d9ae5384aac54f178d022a0fe85ea536
Specification Type	Generic

## Chicken Casserole (with mash potato and carrots/swede)

Manufacturer Component Code	EASY25C
Outer Case GTIN	5060221530149



## INGREDIENTS

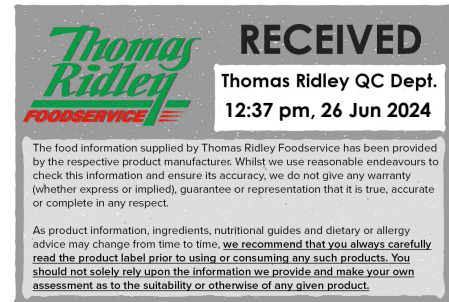
### Ingredient Declaration

Carrot (23%), Water, Chicken (17%) (Chicken, Water, Salt, #MILK# Protein, Lactose (#MILK#), #SOYA# Protein, Stabilisers: Sodium Polyphosphate And Sodium Citrate, Thickeners: Carrageenan, Gelling Agent: Potassium Chloride), Potato (12%), #MILK#, Cream (#MILK#), Onion, Swede (2%), Modified starch, Butter Oil (Vegetable Oil [rape, Palm], Salt, Emulsifier: E322, Flavouring: Butter Oil (#MILK#), Colour: E160a), Leeks (1%), Bechamel (Whey (#MILK#), Skimmed #MILK#, Vegetable Oils (Palm, Fully Hydrogenated Coconut), Modified Starch, Salt, Firming Agent (Disodium Phosphate, Tetrasodium Diphosphate, Calcium Sulphate), Gelling Agent (Sodium Alginate), Sugar, Spices (Pepper, Nutmeg), Colour: Beta Carotene), Salt, Herb And Spice, Gravy Browning ( Water, Colour: E150c, Salt ), Gravy (Modified Maize Starch, Salt, Onion, Palm Oil, Colour: E150c, Whey (#MILK#), Hydrolysed Vegetable Protein [#SOYA# Protein, Maize Protein], Black Pepper), #SOYA#.EGG

## ALLERGENS

Product Contains:

<b>Celery/Celeriac</b>	May Contain	<b>Mustard</b>	May Contain
<b>Cereals Containing Gluten</b>	No	<b>Nuts (Tree)</b>	May Contain
<b>Barley</b>	No	<b>Almond nuts</b>	May Contain
<b>Oats</b>	No	<b>Brazil nuts</b>	May Contain
<b>Rye</b>	No	<b>Cashew nuts</b>	May Contain
<b>Wheat (including Spelt and Khorasan)</b>	No	<b>Hazelnuts</b>	May Contain
<b>Crustacea</b>	No	<b>Macadamia (Queensland) nuts</b>	May Contain
<b>Eggs</b>	Yes	<b>Pecan nuts</b>	May Contain
<b>Fish</b>	No	<b>Pistachio nuts</b>	May Contain
<b>Lupin</b>	No	<b>Walnuts</b>	May Contain
<b>Milk</b>	Yes	<b>Peanuts</b>	May Contain
<b>Molluscs</b>	No	<b>Sesame Seeds</b>	May Contain
		<b>Soybeans</b>	Yes
		<b>Sulphur Dioxide and Sulphites</b>	No



Risk Source:

<b>Tree Nuts (Risk Source)</b>	Raw Material	<b>Mustard (Risk Source)</b>	Raw Material
<b>Brazil nuts (Risk Source)</b>	Raw Material	<b>Almond nuts (Risk Source)</b>	Raw Material
<b>Hazelnuts (Risk Source)</b>	Raw Material	<b>Cashew nuts (Risk Source)</b>	Raw Material
<b>Pecan nuts (Risk Source)</b>	Raw Material	<b>Macadamia nuts (Risk Source)</b>	Raw Material
<b>Walnuts (Risk Source)</b>	Raw Material	<b>Pistachio nuts (Risk Source)</b>	Raw Material
<b>Sesame Seeds (Risk Source)</b>	Raw Material	<b>Peanuts (Risk Source)</b>	Raw Material

**Additional Allergen Information**

For allergens, see ingredients in CAPITALS, may also contain nuts, seeds & soya

SUPPLEMENTARY  
INGREDIENT  
INFORMATION

<b>Palm Oil</b>	Yes
<b>Hydrogenated Vegetable Oil/Fat</b>	No
<b>GM Protein/DNA</b>	No

ADDITIVES

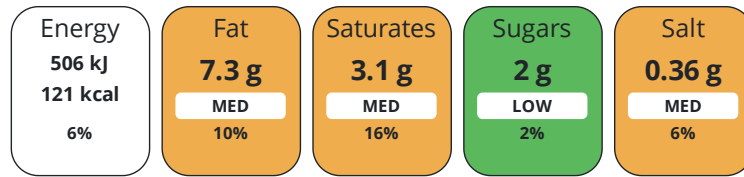
Product Contains:

DIET  
SUITABILITY

<b>Vegan Diet</b>	No	<b>Vegetarian Diet</b>	No
<b>Halal Diet</b>	No	<b>Kosher Diet</b>	No

NUTRITIONAL  
INFORMATION

Each 100g/ml portion contains:



of your reference intake.

Typical values per 100g/ml : Energy 121kcal / 506kj

Nutrient	per 100g	RI per 100g	per 380g of prepared product
<b>Energy (kj)</b>	505.6 kj	6%	1915.5 kj
<b>Energy (kcal)</b>	121 kcal	6%	459.8 kcal
<b>Fat</b>	7.3 g	10%	27.7 g
<b>of which Saturates</b>	3.1 g	16%	11.8 g
<b>Carbohydrate</b>	8 g	3%	30.4 g
<b>of which Sugars</b>	2 g	2%	7.6 g
<b>Fibre</b>	1.1 g		4.2 g
<b>Protein</b>	5.2 g	10%	19.8 g
<b>Salt</b>	0.36 g	6%	1.4 g
<b>Sodium</b>	225 mg		855 mg

**Source of Nutritional Information**      Manufacturers analysis

SUPPLEMENTARY  
NUTRITIONAL  
INFORMATION

HANDLING & STORAGE INFORMATION

**Directions For Use**

HEAT FROM FROZEN, Microwave: heat at 700w for 8-9 mins. Conventional oven: place in pre-heated oven 150.c for 35-40 minutes.  
HEAT MEAL TO CORE TEMPERATURE OF MINIMUM 75+ Once heated do not reheat

**Storage Instructions**

Store at -18.C or colder in a clean environment. Shelf life 15 months from manufacturer. Do not stack more than 6 cases high on a full pallet. Loose individual products do not stack more than two high and always store inside a container/box. Handle with care as C-pet meal containers become fragile at low temperature and will shatter if dropped/mishandled

**Shelf Life from Time of Production** 450 Days

ACCREDITATIONS/ CERTIFICATIONS/ ASSURANCE SCHEMES ORIGIN

**BRCGS Certified**

**Product Country of Origin/Place of Provenance** United Kingdom

PRODUCT CHARACTERISTICS

Standards Testing

<b>Do you undertake trend analysis of microbiological results?</b>	Yes	<b>Is shelf life testing undertaken?</b>	Yes
--	-----	--	-----

CONFIGURATION

Case Configuration

Inner Pack Configuration

<b>Total Quantity of Inner Components in Outer Case</b>	12 Units	<b>Is Inner Pack Splittable?</b>	Yes
<b>Total Quantity of Inner Packs in Outer Case</b>	12 Units	<b>Quantity of Inner Components in Inner Pack</b>	12
<b>Is the Outer Case Splittable?</b>	Yes		

PRODUCT WEIGHTS

Inner Component

Inner Pack

<b>Variable Weight Consumer Item</b>	No	<b>Inner Pack Gross Weight</b>	380 g
<b>Inner Component Weight</b>	380 g		

Outer Case

<b>Outer Case Gross Weight</b>	5.04 kg
<b>Outer Case Net Weight</b>	4.56 kg

PRODUCT DIMENSIONS

Inner Component

Inner Pack

<b>Inner Component Depth</b>	193 mm	<b>Inner Pack Depth</b>	193 mm
<b>Inner Component Width</b>	193 mm	<b>Inner Pack Width</b>	193 mm
<b>Inner Component Height</b>	40 mm	<b>Inner Pack Height</b>	40 mm

Outer Case

<b>Outer Case Depth</b>	385 mm
<b>Outer Case Width</b>	200 mm
<b>Outer Case Height</b>	235 mm

PALLET INFORMATION

<b>Quantity of Cases Per Pallet Layer</b>	15 Cases	<b>Pallet Height</b>	2 MTR
<b>Quantity of Layers Per Pallet</b>	8 Layers	<b>Pallet Gross Weight</b>	528.68 kg
<b>Quantity of Cases Per Pallet</b>	120 Cases		

PACKAGING

Inner Pack Packaging

Type	Materials	Weight	Recycled Plastic %	Recyclable	Returnable	Composite
Case	Paper/Cardboard	30 g	- %			

OTHER INFORMATION

# Beef stew ( and Dumplings with mash potato and carrots/swede)

Manufacturer Component Code EASY31C  
Outer Case GTIN 5060221530149



## INGREDIENTS

### Ingredient Declaration

Water, Beef (19%), Potato (12%), Broccoli, Onion, #MILK#, Cream (#MILK#), Carrot (4%), Swede (1%), Modified Starch, Potato (potato, palm oil, glucose syrup, #MILK# protein, palm oil, whey (#MILK#), acid casein (#MILK#), sodium carbonate, disodium phosphate, #EGG#, salt, flavour (whey (#MILK#), butter (#MILK#), maltodextrin, salt, thickener (guar gum), annatto, turmeric)), Butter Oil (Vegetable Oil [rape, Palm], Salt, Emulsifier: E322, Flavouring: Butter Oil (#MILK#), Colour: E160a), Bechamel (Whey (#MILK#), Skimmed #MILK#, Vegetable Oils (Palm, Fully Hydrogenated Coconut), Modified Starch, Salt, Firming Agent (Disodium Phosphate, Tetrasodium Diphosphate, Calcium Sulphate), Gelling Agent (Sodium Alginate), Sugar, Spices (Pepper, Nutmeg), Colour: Beta Carotene), Tomato, Rapeseed Oil, Herb And Spice, Salt, Gravy Browning ( Water, Colour: E150c, Salt), Gravy (Modified Maize Starch, Salt, Onion, Palm Oil, Colour: E150c, Whey (#MILK#), Hydrolysed Vegetable Protein Protein, Maize Protein], Black Pepper), #MUSTARD#.

## ALLERGENS

Product Contains:

<b>Celery/Celeriac</b>	No	<b>Mustard</b>	Yes
<b>Cereals Containing Gluten</b>	No	<b>Nuts (Tree)</b>	May Contain
<b>Barley</b>	No	<b>Almond nuts</b>	May Contain
<b>Oats</b>	No	<b>Brazil nuts</b>	May Contain
<b>Rye</b>	No	<b>Cashew nuts</b>	May Contain
<b>Wheat (including Spelt and Khorasan)</b>	No	<b>Hazelnuts</b>	May Contain
<b>Crustacea</b>	No	<b>Macadamia (Queensland) nuts</b>	May Contain
<b>Eggs</b>	Yes	<b>Pecan nuts</b>	May Contain
<b>Fish</b>	No	<b>Pistachio nuts</b>	No
<b>Lupin</b>	No	<b>Walnuts</b>	May Contain
<b>Milk</b>	Yes	<b>Peanuts</b>	May Contain
<b>Molluscs</b>	No	<b>Sesame Seeds</b>	May Contain
		<b>Soybeans</b>	No
		<b>Sulphur Dioxide and Sulphites</b>	May Contain

Risk Source:

<b>Tree Nuts (Risk Source)</b>	Raw Material	<b>Almond nuts (Risk Source)</b>	Raw Material
<b>Brazil nuts (Risk Source)</b>	Raw Material	<b>Cashew nuts (Risk Source)</b>	Raw Material
<b>Hazelnuts (Risk Source)</b>	Raw Material	<b>Macadamia nuts (Risk Source)</b>	Raw Material
<b>Pecan nuts (Risk Source)</b>	Raw Material	<b>Walnuts (Risk Source)</b>	Raw Material
<b>Peanuts (Risk Source)</b>	Raw Material	<b>Sesame Seeds (Risk Source)</b>	Raw Material
<b>Sulphur Dioxide and Sulphites (Risk Source)</b>	Raw Material		

### Additional Allergen Information

For allergens, see ingredients in CAPITALS, may also contain nuts, seeds & soya

## SUPPLEMENTARY INGREDIENT INFORMATION

<b>Palm Oil</b>	Yes
<b>Hydrogenated Vegetable Oil/Fat</b>	No
<b>GM Protein/DNA</b>	No

## ADDITIVES

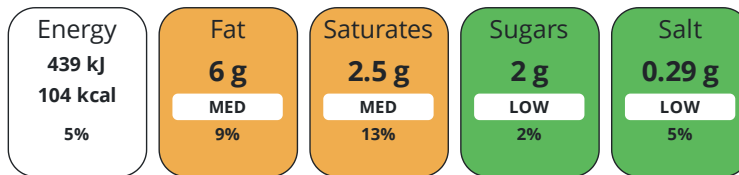
Product Contains:

## DIET SUITABILITY

<b>Vegan Diet</b>	No	<b>Vegetarian Diet</b>	No
<b>Halal Diet</b>	No	<b>Kosher Diet</b>	No

NUTRITIONAL INFORMATION

Each 100g/ml portion contains:



of your reference intake.

Typical values per 100g/ml : Energy 104kcal / 439kj

Nutrient	per 100g	RI per 100g	per 380g of prepared product
Energy (kJ)	438.5 kJ	5%	1661.6 kJ
Energy (kcal)	104 kcal	5%	395.2 kcal
Fat	6 g	9%	22.8 g
of which Saturates	2.5 g	13%	9.5 g
Carbohydrate	7 g	3%	26.6 g
of which Sugars	2 g	2%	7.6 g
Fibre	1.3 g		4.9 g
Protein	4.9 g	10%	18.6 g
Salt	0.29 g	5%	1.1 g

Source of Nutritional Information Manufacturers analysis

SUPPLEMENTARY NUTRITIONAL INFORMATION

HANDLING & STORAGE INFORMATION

Directions For Use

HEAT FROM FROZEN, Microwave: heat at 700w for 8-9 mins. Conventional oven: place in pre-heated oven 150.c for 35-40 minutes. HEAT MEAL TO CORE TEMPERATURE OF MINIMUM 75+ Once heated do not reheat

Storage Instructions

Store at -18.C or colder in a clean environment. Shelf life 15 months from manufacturer. Do not stack more than 6 cases high on a full pallet. Loose individual products do not stack more than two high and always store inside a container/box. Handle with care as C-pet meal containers become fragile at low temperature and will shatter if dropped/mishandled

Shelf Life from Time of Production 450 Days

ORIGIN

Product Country of Origin/Place of United Kingdom

Provenance

Standards Testing

PRODUCT CHARACTERISTICS

Do you undertake trend analysis of microbiological results? Yes

Is shelf life testing undertaken? Yes

CONFIGURATION

Case Configuration

Inner Pack Configuration

Total Quantity of Inner Components in Outer Case 12 Units

Is Inner Pack Splittable? Yes

Total Quantity of Inner Packs in Outer Case 12 Units

Quantity of Inner Components in Inner Pack 12

Case

Is the Outer Case Splittable? Yes

PRODUCT WEIGHTS

Inner Component	
<b>Variable Weight Consumer Item</b>	No
<b>Inner Component Weight</b>	380 g
Outer Case	
<b>Outer Case Gross Weight</b>	5.04 kg
<b>Outer Case Net Weight</b>	4.56 kg

Inner Pack	
<b>Inner Pack Gross Weight</b>	380 g

PRODUCT DIMENSIONS

Inner Component	
<b>Inner Component Depth</b>	193 mm
<b>Inner Component Width</b>	193 mm
<b>Inner Component Height</b>	40 mm
Outer Case	
<b>Outer Case Depth</b>	385 mm
<b>Outer Case Width</b>	200 mm
<b>Outer Case Height</b>	235 mm

Inner Pack	
<b>Inner Pack Depth</b>	193 mm
<b>Inner Pack Width</b>	193 mm
<b>Inner Pack Height</b>	40 mm

PALLET INFORMATION

<b>Quantity of Cases Per Pallet Layer</b>	15 Cases
<b>Quantity of Layers Per Pallet</b>	8 Layers
<b>Quantity of Cases Per Pallet</b>	120 Cases

<b>Pallet Height</b>	2 MTR
<b>Pallet Gross Weight</b>	528.68 kg

PACKAGING

Inner Component Packaging						
Type	Materials	Weight	Recycled Plastic %	Recyclable	Returnable	Composite
Poly Treated PET/PE	Plastic	10 g	- %			

Inner Pack Packaging						
Type	Materials	Weight	Recycled Plastic %	Recyclable	Returnable	Composite
Case	Paper/Cardboard	30 g	- %			

OTHER INFORMATION

# Vegetable Lasagne ( with potato mash and carrots)

Manufacturer Component Code EASY41C  
Outer Case GTIN 5060221530149



## INGREDIENTS

### Ingredient Declaration

Water, Carrot (18%), Potato (12%), #MILK#, Cream (#MILK#), Lentils (5%), #SOYA# Mince (2%) (Rehydrated textured #SOYA# protein, flavourings, salt, sugar, maltodextrin, white pepper, palm oil, malted #BARLEY# extract), Tomato, Onion, Bechamel (Whey (#MILK#), Skimmed #MILK#, Vegetable Oils (Palm, Fully Hydrogenated Coconut), Modified Starch, Salt, Firming Agent (Disodium Phosphate, Tetrasodium Diphosphate, Calcium Sulphate), Gelling Agent (Sodium Alginate), Sugar, Spices (Pepper, Nutmeg), Colour: Beta Carotene), Aubergine, Courgette, Tomato, Modified Starch, Cheese (#MILK#), Butter Oil (Vegetable Oil [rape, Palm], Salt, Emulsifier: E322, Flavouring: Butter Oil (#MILK#), Colour: E160a), Rapeseed Oil, Pasta (Durum #WHEAT# semolina, water), Herb And Spice, Salt.

## ALLERGENS

Product Contains:

<b>Celery/Celeriac</b>	May Contain	<b>Mustard</b>	No
<b>Cereals Containing Gluten</b>	Yes	<b>Nuts (Tree)</b>	May Contain
<b>Barley</b>	Yes	<b>Almond nuts</b>	May Contain
<b>Oats</b>	No	<b>Brazil nuts</b>	May Contain
<b>Rye</b>	No	<b>Cashew nuts</b>	May Contain
<b>Wheat (including Spelt and Khorasan)</b>	Yes	<b>Hazelnuts</b>	May Contain
<b>Crustacea</b>	No	<b>Macadamia (Queensland) nuts</b>	May Contain
<b>Eggs</b>	No	<b>Pecan nuts</b>	May Contain
<b>Fish</b>	No	<b>Pistachio nuts</b>	May Contain
<b>Lupin</b>	No	<b>Walnuts</b>	May Contain
<b>Milk</b>	Yes	<b>Peanuts</b>	May Contain
<b>Molluscs</b>	No	<b>Sesame Seeds</b>	May Contain
		<b>Soybeans</b>	Yes
		<b>Sulphur Dioxide and Sulphites</b>	No

Risk Source:

<b>Celery/Celeriac (Risk Source)</b>	Raw Material	<b>Tree Nuts (Risk Source)</b>	Raw Material
<b>Almond nuts (Risk Source)</b>	Raw Material	<b>Brazil nuts (Risk Source)</b>	Raw Material
<b>Cashew nuts (Risk Source)</b>	Raw Material	<b>Hazelnuts (Risk Source)</b>	Raw Material
<b>Macadamia nuts (Risk Source)</b>	Raw Material	<b>Pecan nuts (Risk Source)</b>	Raw Material
<b>Pistachio nuts (Risk Source)</b>	Raw Material	<b>Walnuts (Risk Source)</b>	Raw Material
<b>Peanuts (Risk Source)</b>	Raw Material	<b>Sesame Seeds (Risk Source)</b>	Raw Material

### Additional Allergen Information

For allergens, see ingredients in CAPITALS, may also contain nuts, seeds & soya

## SUPPLEMENTARY INGREDIENT INFORMATION

<b>Palm Oil</b>	Yes
<b>Hydrogenated Vegetable Oil/Fat</b>	Yes
<b>GM Protein/DNA</b>	No

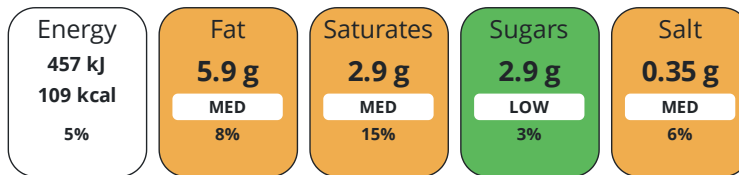
## ADDITIVES

Product Contains:

## DIET SUITABILITY

<b>Vegan Diet</b>	No	<b>Vegetarian Diet</b>	Suitable for
<b>Halal Diet</b>	No	<b>Kosher Diet</b>	No

Each 100g/ml portion contains:



of your reference intake.

Typical values per 100g/ml : Energy 109kcal / 457kj

Nutrient	per 100g	RI per 100g	per 380g of prepared product
Energy (kJ)	457 kJ	5%	1736 kJ
Energy (kcal)	109 kcal	5%	457 kcal
Fat	5.9 g	8%	23 g
of which Saturates	2.9 g	15%	11 g
Carbohydrate	11 g	4%	38 g
of which Sugars	2.9 g	3%	9.9 g
Fibre	1.4 g		5.1 g
Protein	3.4 g	7%	13 g
Salt	0.35 g	6%	1.3 g
Sodium	103 mg		526 mg

**Source of Nutritional Information** Manufacturers analysis

SUPPLEMENTARY  
NUTRITIONAL  
INFORMATION

HANDLING &  
STORAGE  
INFORMATION

**Directions For Use**

HEAT FROM FROZEN, Microwave: heat at 700w for 8-9 mins. Conventional oven: place in pre-heated oven 150.c for 35-40 minutes.  
HEAT MEAL TO CORE TEMPERATURE OF MINIMUM 75+ Once heated do not reheat

**Storage Instructions**

Store at -18.C or colder in a clean environment. Shelf life 15 months from manufacturer. Do not stack more than 6 cases high on a full pallet. Loose individual products do not stack more than two high and always store inside a container/box. Handle with care as C-pet meal containers become fragile at low temperature and will shatter if dropped/mishandled

**Shelf Life from Time of Production** 450 Days

ORIGIN

**Product Country of Origin/Place of** United Kingdom

**Provenance**

PRODUCT  
CHARACTERISTICS

Standards Testing

**Do you undertake trend analysis of microbiological results?** Yes

**Is shelf life testing undertaken?** Yes

CONFIGURATION

Case Configuration

Inner Pack Configuration

**Total Quantity of Inner Components in Outer Case** 12 Units

**Is Inner Pack Splittable?** Yes

**Total Quantity of Inner Packs in Outer Case** 12 Units

**Quantity of Inner Components in Inner Pack** 12

**Is the Outer Case Splittable?** Yes



PRODUCT WEIGHTS

Inner Component		Inner Pack	
<b>Variable Weight Consumer Item</b>	No	<b>Inner Pack Gross Weight</b>	380 g
<b>Inner Component Weight</b>	380 g		
Outer Case			
<b>Outer Case Gross Weight</b>	5.04 kg		
<b>Outer Case Net Weight</b>	4.56 kg		

PRODUCT DIMENSIONS

Inner Component		Inner Pack	
<b>Inner Component Depth</b>	193 mm	<b>Inner Pack Depth</b>	193 mm
<b>Inner Component Width</b>	193 mm	<b>Inner Pack Width</b>	193 mm
<b>Inner Component Height</b>	40 mm	<b>Inner Pack Height</b>	40 mm
Outer Case			
<b>Outer Case Depth</b>	385 mm		
<b>Outer Case Width</b>	200 mm		
<b>Outer Case Height</b>	235 mm		

PALLET INFORMATION

<b>Quantity of Cases Per Pallet Layer</b>	15 Cases	<b>Pallet Height</b>	2 MTR
<b>Quantity of Layers Per Pallet</b>	8 Layers	<b>Pallet Gross Weight</b>	528.68 kg
<b>Quantity of Cases Per Pallet</b>	120 Cases		

PACKAGING

Inner Component Packaging						
Type	Materials	Weight	Recycled Plastic %	Recyclable	Returnable	Composite
Poly Treated PET/PE	Plastic	10 g	- %			
Inner Pack Packaging						
Type	Materials	Weight	Recycled Plastic %	Recyclable	Returnable	Composite
Case	Paper/Cardboard	30 g	- %			

OTHER INFORMATION

# Fish in Cheese Sauce ( with mash potato and mushy peas)

**Manufacturer Component Code** EASY28C  
**Outer Case GTIN** 5060221530149



## INGREDIENTS

### Ingredient Declaration

Peas (26%) (Rehydrated Processed Peas, Water, Sugar, Salt, Natural Colours: Carotene, Chlorophyllin), Hoki (#FISH#) (21%), Water, Potato (12%), #MILK#, Bechamel (Whey (#MILK#), Skimmed #MILK#, Vegetable Oils (Palm, Fully Hydrogenated Coconut), Modified Starch, Salt, Firming Agent (Disodium Phosphate, Tetrasodium Diphosphate, Calcium Sulphate), Gelling Agent (Sodium Alginate), Sugar, Spices (Pepper, Nutmeg), Colour: Beta Carotene), Cream (#MILK#), Cheese (#MILK#), Modified Starch, Butter Oil (Vegetable Oil [rape, Palm], Salt, Emulsifier: E322, Flavouring: Butter Oil (#MILK#), Colour: E160a), Herb And Spice. Whilst extra care is taken to remove bones, some may remain.

## ALLERGENS

Product Contains:

<b>Celery/Celeriac</b>	May Contain	<b>Mustard</b>	May Contain
<b>Cereals Containing Gluten</b>	No	<b>Nuts (Tree)</b>	May Contain
<b>Barley</b>	No	<b>Almond nuts</b>	May Contain
<b>Oats</b>	No	<b>Brazil nuts</b>	May Contain
<b>Rye</b>	No	<b>Cashew nuts</b>	May Contain
<b>Wheat (including Spelt and Khorasan)</b>	No	<b>Hazelnuts</b>	May Contain
<b>Crustacea</b>	No	<b>Macadamia (Queensland) nuts</b>	May Contain
<b>Eggs</b>	May Contain	<b>Pecan nuts</b>	May Contain
<b>Fish</b>	Yes	<b>Pistachio nuts</b>	May Contain
<b>Lupin</b>	No	<b>Walnuts</b>	May Contain
<b>Milk</b>	Yes	<b>Peanuts</b>	May Contain
<b>Molluscs</b>	No	<b>Sesame Seeds</b>	May Contain
		<b>Soybeans</b>	May Contain
		<b>Sulphur Dioxide and Sulphites</b>	Yes

Risk Source:

<b>Celery/Celeriac (Risk Source)</b>	Raw Material	<b>Eggs (Risk Source)</b>	Raw Material
<b>Mustard (Risk Source)</b>	Raw Material	<b>Tree Nuts (Risk Source)</b>	Raw Material
<b>Almond nuts (Risk Source)</b>	Raw Material	<b>Brazil nuts (Risk Source)</b>	Raw Material
<b>Cashew nuts (Risk Source)</b>	Raw Material	<b>Hazelnuts (Risk Source)</b>	Raw Material
<b>Macadamia nuts (Risk Source)</b>	Raw Material	<b>Pecan nuts (Risk Source)</b>	Raw Material
<b>Pistachio nuts (Risk Source)</b>	Raw Material	<b>Walnuts (Risk Source)</b>	Raw Material
<b>Peanuts (Risk Source)</b>	Raw Material	<b>Sesame Seeds (Risk Source)</b>	Raw Material
<b>Soybeans (Risk Source)</b>	Raw Material		

### Additional Allergen Information

For allergens, see ingredients in CAPITALS, may also contain nuts, seeds & soya

## SUPPLEMENTARY INGREDIENT INFORMATION

<b>Hydrogenated Vegetable Oil/Fat</b>	Yes
<b>GM Protein/DNA</b>	No

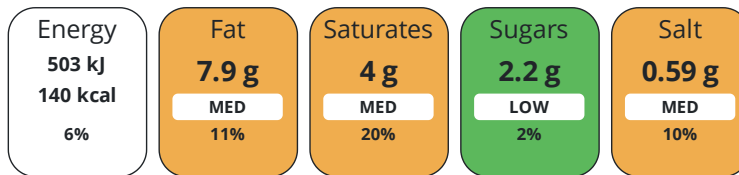
## ADDITIVES

Product Contains:

## DIET SUITABILITY

<b>Vegan Diet</b>	No	<b>Vegetarian Diet</b>	No
<b>Halal Diet</b>	No	<b>Kosher Diet</b>	No

Each 100g/ml portion contains:



of your reference intake.

Typical values per 100g/ml : Energy 140kcal / 503kj

Nutrient	per 100g	RI per 100g	per 380g of prepared product
Energy (kJ)	503 kJ	6%	2215.4 kJ
Energy (kcal)	140 kcal	7%	532 kcal
Fat	7.9 g	11%	30 g
of which Saturates	4 g	20%	15.2 g
Carbohydrate	11 g	4%	41.8 g
of which Sugars	2.2 g	2%	8.4 g
Protein	5.9 g	12%	22.4 g
Salt	0.59 g	10%	2.2 g
Sodium	236 mg		896.8 mg

**Source of Nutritional Information** Manufacturers analysis

SUPPLEMENTARY  
NUTRITIONAL  
INFORMATION

HANDLING &  
STORAGE  
INFORMATION

**Directions For Use**

HEAT FROM FROZEN, Microwave: heat at 700w for 8-9 mins. Conventional oven: place in pre-heated oven 150.c for 35-40 minutes.  
HEAT MEAL TO CORE TEMPERATURE OF MINIMUM 75+ Once heated do not reheat

**Storage Instructions**

Store at -18.C or colder in a clean environment. Shelf life 15 months from manufacturer. Do not stack more than 6 cases high on a full pallet. Loose individual products do not stack more than two high and always store inside a container/box. Handle with care as C-pet meal containers become fragile at low temperature and will shatter if dropped/mishandled

**Shelf Life from Time of Production** 450 Days

ORIGIN

**Product Country of Origin/Place of** United Kingdom

**Provenance**

Standards Testing

PRODUCT  
CHARACTERISTICS

**Do you undertake trend analysis of microbiological results?** Yes

**Is shelf life testing undertaken?** Yes

CONFIGURATION

Case Configuration

Inner Pack Configuration

**Total Quantity of Inner Components in Outer Case** 12 Units

**Is Inner Pack Splittable?** Yes

**Total Quantity of Inner Packs in Outer Case** 12 Units

**Quantity of Inner Components in Inner Pack** 12

**Case**

**Is the Outer Case Splittable?** Yes

PRODUCT WEIGHTS	Inner Component			Inner Pack			
	<b>Variable Weight Consumer Item</b>	No		<b>Inner Pack Gross Weight</b>	380 g		
	<b>Inner Component Weight</b>	380 g					
	Outer Case						
	<b>Outer Case Gross Weight</b>	5.04 kg					
	<b>Outer Case Net Weight</b>	4.56 kg					
PRODUCT DIMENSIONS	Inner Component			Inner Pack			
	<b>Inner Component Depth</b>	193 mm		<b>Inner Pack Depth</b>	193 mm		
	<b>Inner Component Width</b>	193 mm		<b>Inner Pack Width</b>	193 mm		
	<b>Inner Component Height</b>	40 mm		<b>Inner Pack Height</b>	40 mm		
	Outer Case						
	<b>Outer Case Depth</b>	385 mm					
<b>Outer Case Width</b>	200 mm						
<b>Outer Case Height</b>	235 mm						
PALLET INFORMATION	<b>Quantity of Cases Per Pallet Layer</b>	15 Cases		<b>Pallet Height</b>	2 MTR		
	<b>Quantity of Layers Per Pallet</b>	8 Layers		<b>Pallet Gross Weight</b>	528.68 kg		
	<b>Quantity of Cases Per Pallet</b>	120 Cases					
PACKAGING	Inner Component Packaging						
	<b>Type</b>	<b>Materials</b>	<b>Weight</b>	<b>Recycled Plastic %</b>	<b>Recyclable</b>	<b>Returnable</b>	<b>Composite</b>
Poly Treated PET/PE	Plastic	10 g	- %				
Inner Pack Packaging							
<b>Type</b>	<b>Materials</b>	<b>Weight</b>	<b>Recycled Plastic %</b>	<b>Recyclable</b>	<b>Returnable</b>	<b>Composite</b>	
Case	Paper/Cardboard	30 g	- %				
OTHER INFORMATION CONTACT INFORMATION	Address			Technical Contact			
	Simply Food Solutions			Fiona Gleghorn			
	Eldon Street			Head of Technical			
	South Shields			fiona.gleghorn@simplyfoodsolutions.co.uk			
	Newcastle						
	Tyne and Wear			<u>P: (Phone)</u> 07745648777			
	NE33 5BZ						
	United Kingdom						
	<u>P: (Phone)</u> 01914560456						
	Complaints Contact						
Fiona Gleghorn							
Head of Technical							
fiona.gleghorn@simplyfoodsolutions.co.uk							
<u>P: (Phone)</u> 077745648777							

The information on the [Erudus System](#) has been supplied by the manufacturers of the products and, whilst the owners of the Erudus System take steps to ensure the information is regularly updated, they give no warranty and no guarantee that the information is accurate. Product information and ingredients may change, please always read product labels carefully in addition to using the information provided by Erudus.

We do not accept liability for any inaccuracies or incorrect information contained on this site.  
Please visit <http://www.erudus.com/terms-and-conditions> for full terms and conditions.